

For Sale
20,000 SF
For Lease
1,200-11,500 SF

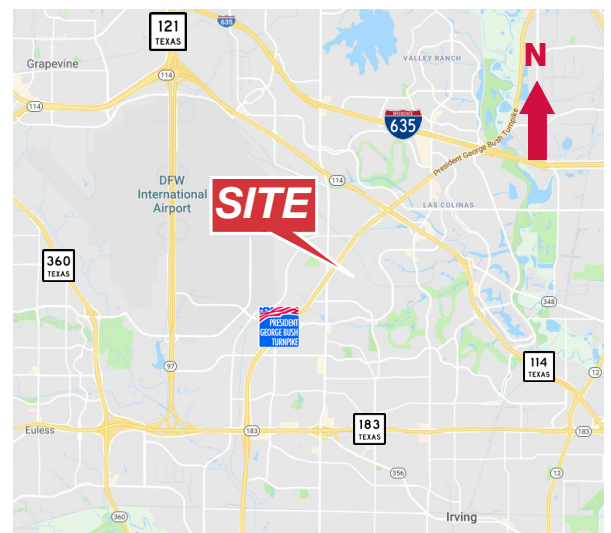


3007 N. Skyway Circle

Irving, Texas 75038

Property Features

- Available for Sale : 20,000 SF
- Available for Lease: \pm 1,200 - 11,500 SF
- 60 Parking Spaces
- Monument Signage
- Shared Training, Conference, and Break Room
- \pm 1.61 Acre Lot
- Divisible to Various Sizes



Zach Stevens

214 256 7149
zstevens@robertlynn.com

Jeff Jackson

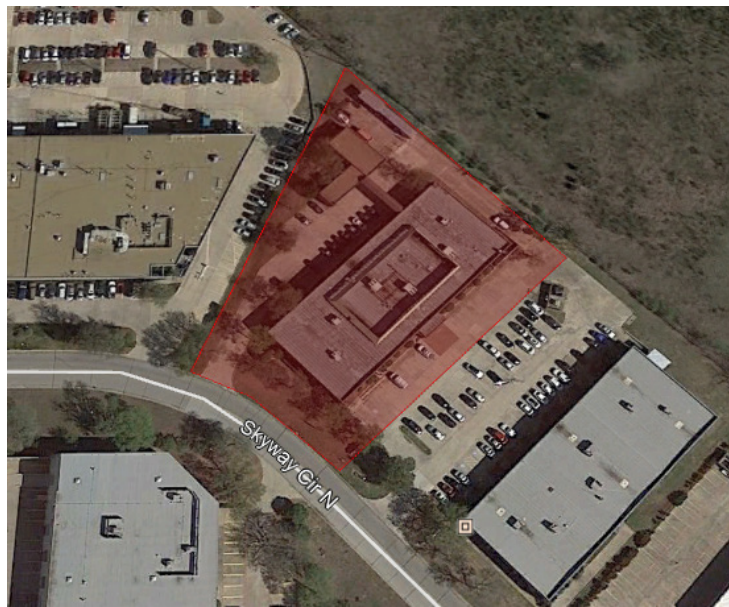
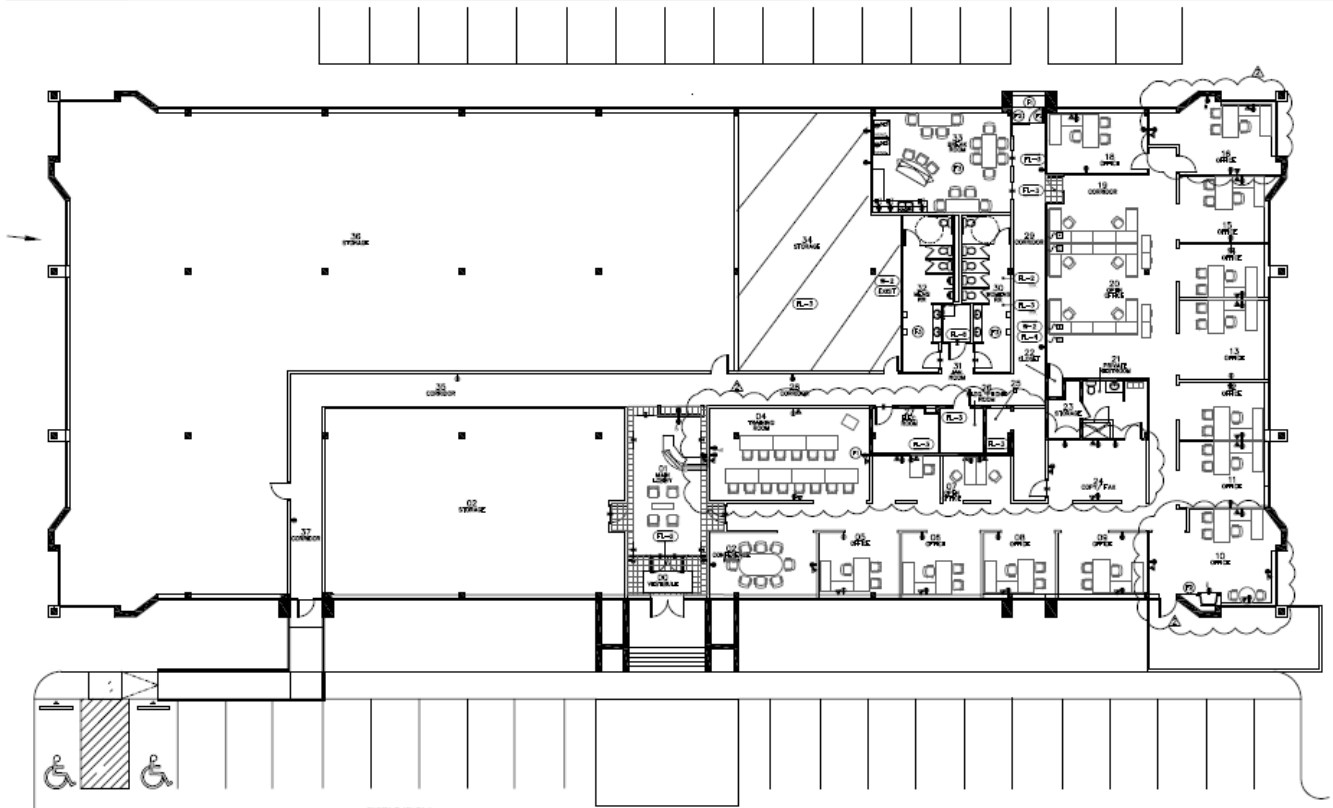
817 872 3910
jjackson@robertlynn.com



For Sale
20,000 SF

For Lease
1,200-11,500 SF

3007 N. Skyway Circle
Irving, Texas 75038



For Sale
20,000 SF

For Lease
1,200-11,500 SF

3007 N. Skyway Circle
Irving, Texas 75038

