

ODDFELLOWS BUILDING

915 E PINE STREET, SEATTLE, WA 98122

Office Space For Lease

East Hall – Suite 201	2,642 SF
Suite 101	±1,455 SF
Suite 200	±1,030 SF

Suites 101 and 200 can be combined to ±2,485 SF

CAVAN O'KEEFE

t 206.395.2903

cavan.okeefe@nmrk.com

TRACY TURNURE

t 425.372.9923

tracy.turnure@nmrk.com

NEWMARK





BUILDING

Highlights

Dynamic, historic office space for lease in the heart of Capitol Hill

- Built in 1908 and renovated in 2008
- Across from Cal Anderson Park
- One block to Seattle Streetcar's First Hill Line and King County metro buses, four blocks to Link light rail's Capitol Hill Station
- Neighboring retailers include Oddfellows Cafe + Bar, Molly Moon's ice cream, The Tin Table, Le Labo and Elliott Bay Book Company
- New passenger elevator and shared restrooms



BUILDING

Accessibility

- Easy access to I-5
- 5 minute walk to Link Light Rail
- 1 block from Seattle Streetcar
- Buses: 49,11,60,43,9x
- Protected bike lane on Broadway



WALK SCORE

100



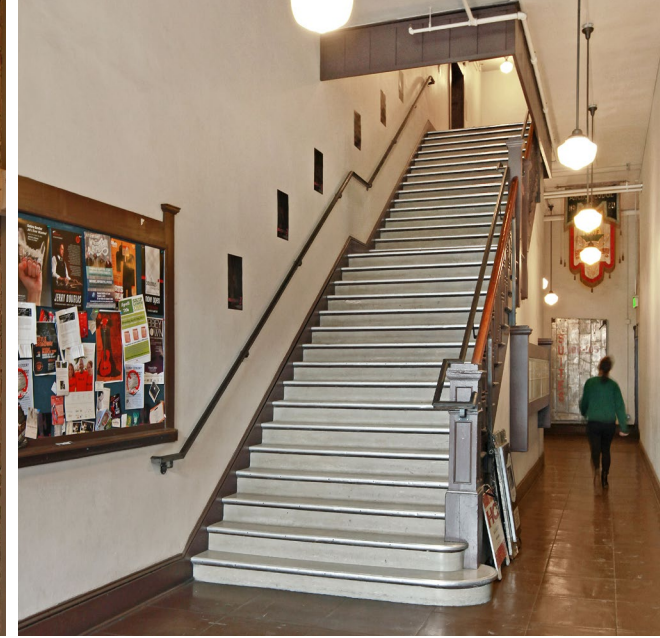
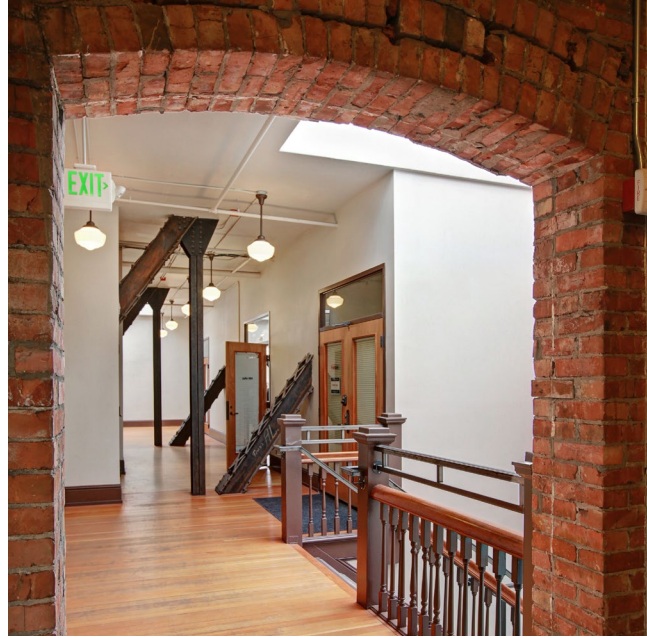
TRANSIT SCORE

86



BIKE SCORE

93



FLOOR PLAN

Second Floor

East Hall – Suite 201

2,642 SF

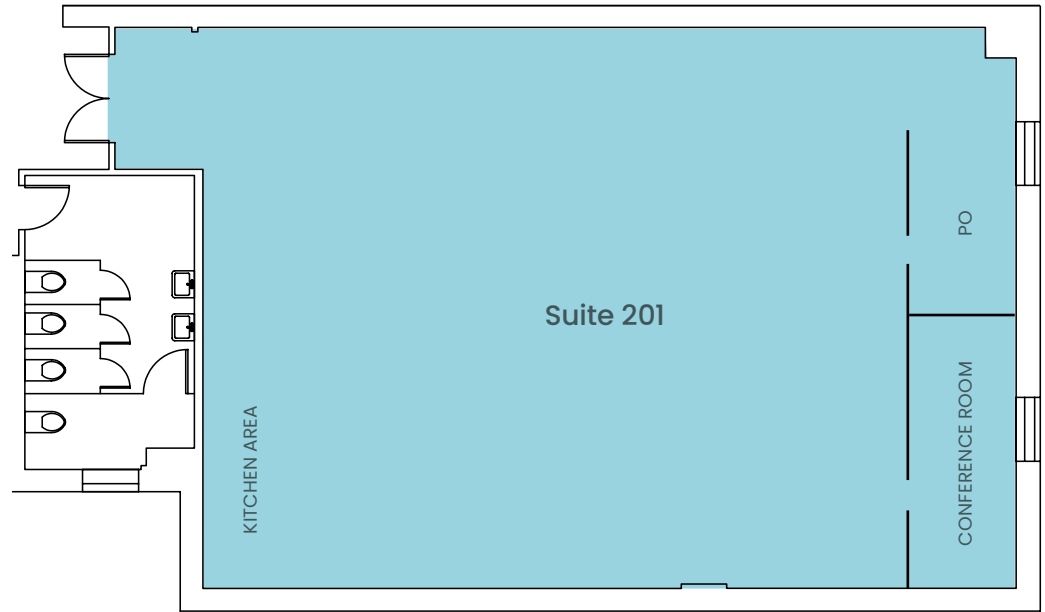
\$26.00 NNN

Available January 1, 2025

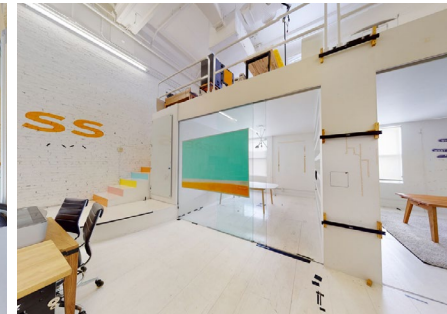
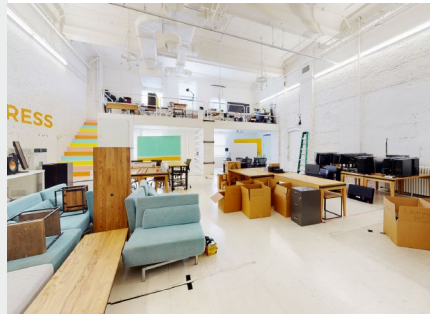
Bright creative office space

Open space, kitchen area, high ceilings, two private offices, and two conference rooms with a mezzanine/storage area

Furniture available at no cost



SUITE 201 VIRTUAL TOUR



FLOOR PLAN

First Floor

Suite 101 | ±1,455 SF

\$18.00 NNN

Available Now

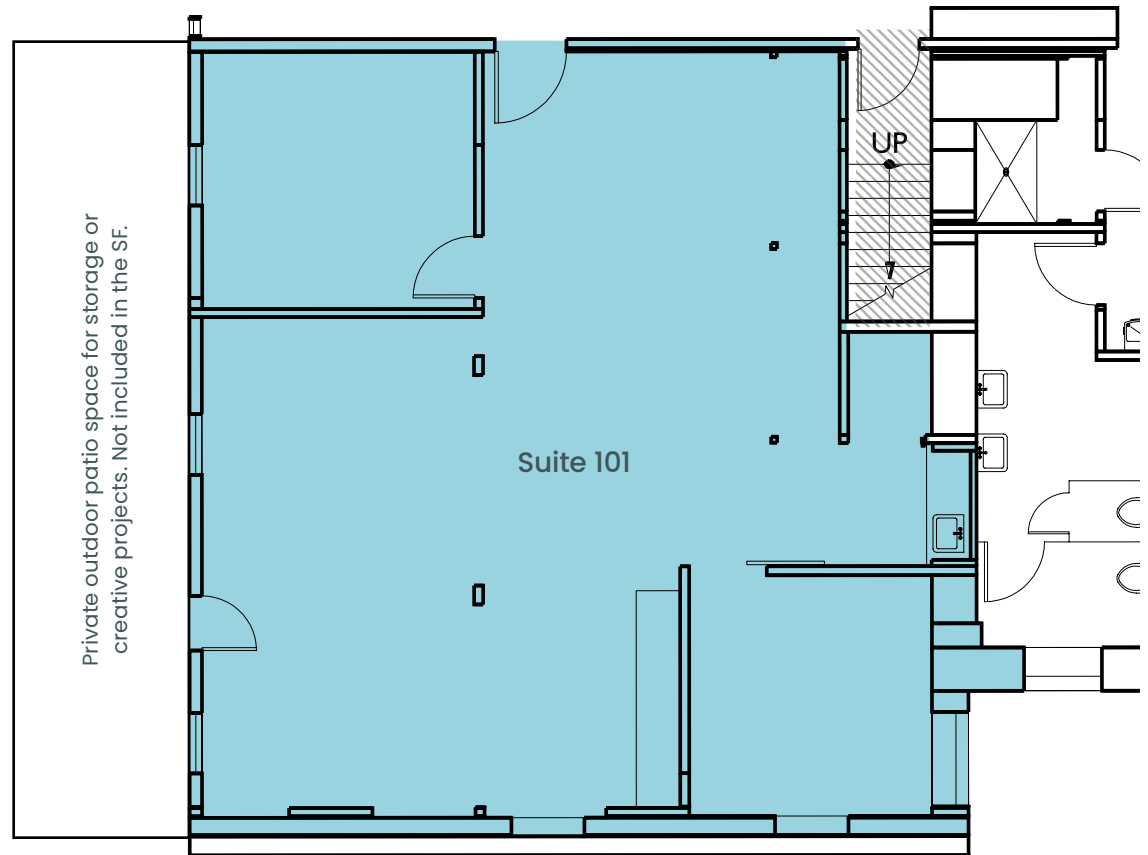
Creative office space

Open space with two private offices and conference rooms

Brick & beam character with high ceilings and a gated outdoor patio

Suite 101 & 200: 1,455-2,485 RSF
Ideally rented together.

SUITE 101 VIRTUAL TOUR 



FLOOR PLAN

Second Floor

Suite 200 | ±1,030 SF

\$18.00 NNN

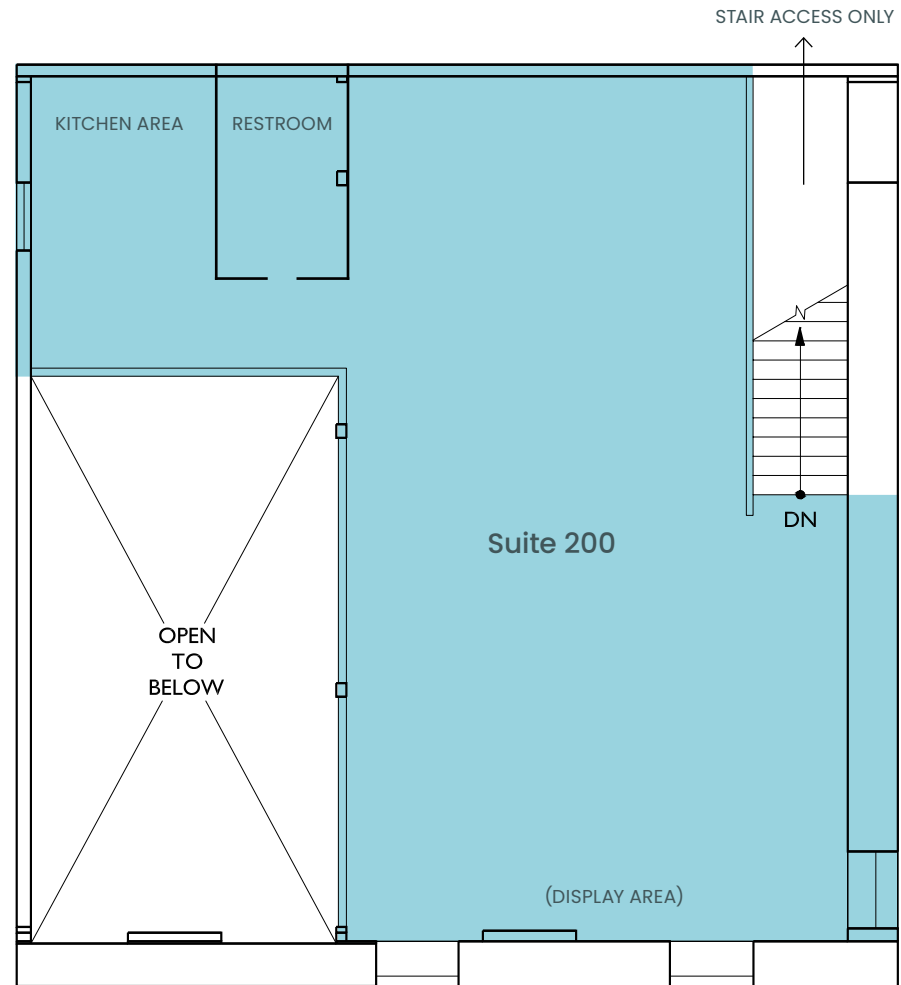
Available Now

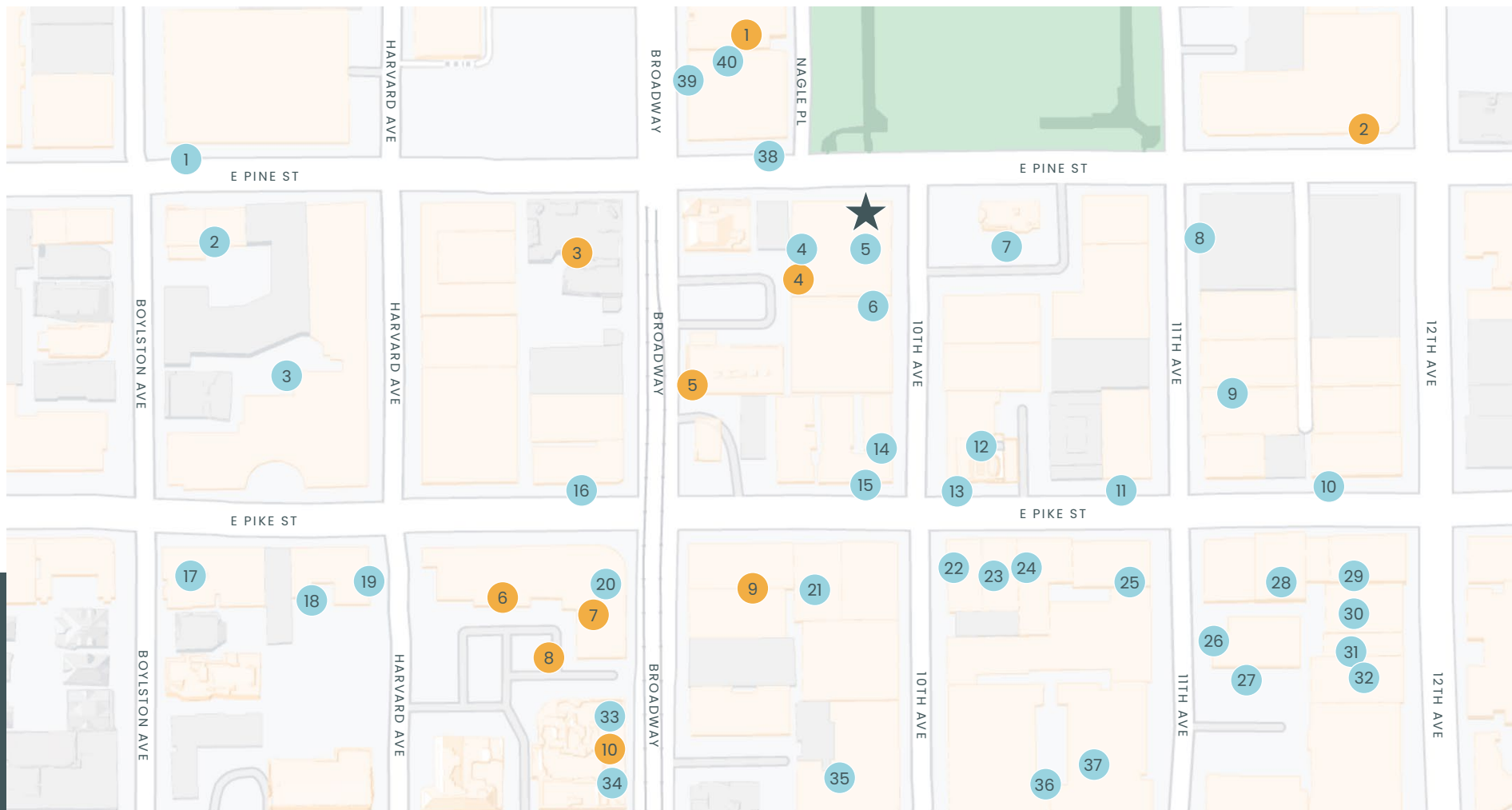
Creative office space

Showroom type of creative space

Stair access only, hardwood floors,
brick character, open space with
display areas, kitchen, and bathroom

Suite 101 & 200: 1,455-2,485 RSF
Ideally rented together.





EAT & DRINK

- | | | |
|------------------------------------|-------------------------------|-------------------------------|
| 1. Hot Mama's Pizza | 11. Sam's Tavern | 21. Via Tribunali |
| 2. Linda's Tavern | 12. Havana | 22. Quinn's Pub |
| 3. Verve Bowls | 13. Poquitos | 23. Cafe Vita |
| 4. The Tin Table Restaurant & Bar | 14. Lost Lake Cafe & Lounge | 24. Big Mario's Pizza |
| 5. Molly Moon's Homemade Ice cream | 15. Comet Tavern | 25. Wildrose |
| 6. Oddfellows Cafe & Bar | 16. Capitol Cider | 26. Marmite Seattle |
| 7. Rancho Bravo Tacos | 17. Honey Hole | 27. Petite Galette |
| 8. Stout | 18. Ayutthaya Thai | 28. Cupcake Royale |
| 9. Grim's Provisions & Spirits | 19. Saint John's Bar & Eatery | 29. Bai Tong Thai Street Cafe |
| 10. Unicorn | 20. Starbucks | 30. Plum Bistro |

- | |
|-------------------------------|
| 31. Osteria la Spiga |
| 32. Plum Chopped |
| 33. Chipotle Mexican Grill |
| 34. 8oz Burger & Co. |
| 35. The Gokan by Musashi |
| 36. General Porpose Doughnuts |
| 37. Bateau |
| 38. Rock Box |
| 39. Yo Zushi |
| 40. Ian's Pizza By The Slice |

SHOP

- | |
|------------------------------|
| 1. Game Stop |
| 2. NW Liquor and Wine |
| 3. Walgreens |
| 4. Fleet Feet Sports Seattle |
| 5. Mud Bay |
| 6. AT&T Store |
| 7. QFC |
| 8. Havard Market |
| 9. Retail Therapy |
| 10. Bartell Drug |

ODDFELLOWS BUILDING

915 E PINE STREET, SEATTLE, WA 98122

CAVAN O'KEEFE

t 206.395.2903

cavan.okeefe@nmrk.com

TRACY TURNURE

t 425.372.9923

tracy.turnure@nmrk.com

NEWMARK

The information contained herein has been obtained from sources deemed reliable but has not been verified and no guarantee, warranty or representation, either express or implied, is made with respect to such information. Terms of sale or lease and availability are subject to change or withdrawal without notice.