

# PREMIER MEDICAL OFFICE SPACE FOR LEASE

1260 S. Eliseo Drive, Greenbrae, CA 94904



- > 1,617 - 5,336+/- square feet
- > Owner can demise to a variety of configurations, with 1,617, 2,020 2,195 and 2,617 sf options
- > Elevator served



**KEEGAN & COPPIN  
COMPANY, INC.**

[www.keegancoppin.com](http://www.keegancoppin.com)

REPRESENTED BY:

**Matt Storms, Partner & Vesa Becam, Partner**

Lic.#s: 01233478 & 01459190

101 Larkspur Landing Circle, Suite 112, Larkspur, CA 94939

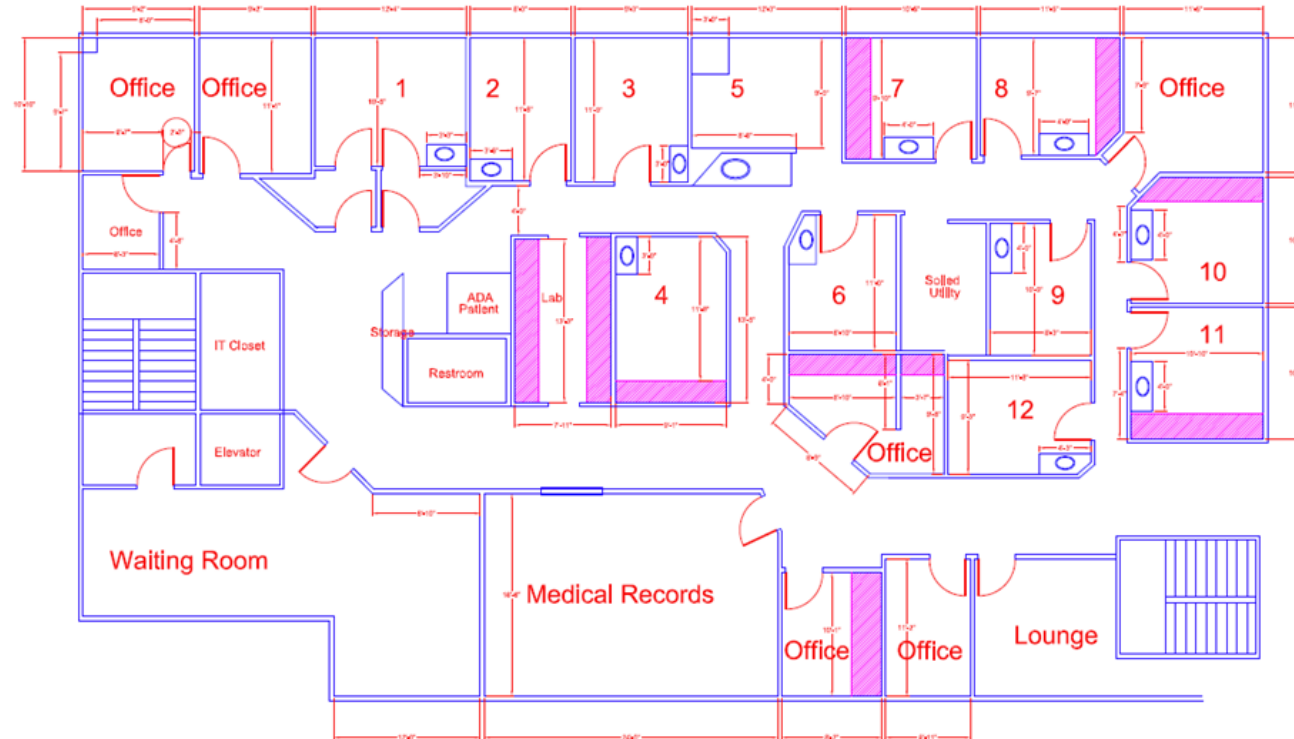
(415) 461-1010 • (415) 925-2310

[mstorms@keegancoppin.com](mailto:mstorms@keegancoppin.com) • [vesa@keegancoppin.com](mailto:vesa@keegancoppin.com)

# Premier Medical Office Space for Lease

1260 S. Eliseo Drive, Greenbrae, CA 94904

## Current Layout



KEEGAN & COPPIN  
COMPANY, INC.  
www.keegancoppin.com

**Matt Storms, Partner & Vesa Becam, Partner**

101 Larkspur Landing Circle, Suite 112, Larkspur, CA 94939

(415) 461-1010 • Fax: (415) 925-2310

Lic #s: 01233478 & 01459190

mstorms@keegancoppin.com • vesa@keegancoppin.com

# Premier Medical Office Space for Lease

1260 S. Eliseo Drive, Greenbrae, CA 94904

ZONING:

A-P

SUITE SIZE:

1,617 - 5,336+/- square feet

LEASE PRICE:

\$4.50 psf, NNN

PARKING:

Plentiful on-site

BUILDING SIZE:

9,866+/- square feet

LEASE TERMS:

5 years

DESCRIPTION OF PREMISES - FEATURES:

First class medical office space consisting of:

- 12 exam rooms
- reception/waiting area
- 5 consultation/business offices
- records room
- storage
- lab

Elevator served. Owner can demise to a variety of configurations, with 1,617, 2,020, 2,195 and 2,617 sf options.

DESCRIPTION OF LOCATION - AREA:

1260 S. Eliseo is located in a medical office corridor adjacent to Marin General Hospital, with a diverse and dense community of practitioners. Seconds from Sir Francis Drake Blvd., and mere minutes from Highway 101, the Larkspur Ferry Terminal and the Richmond San Rafael Bridge, the building boasts a central location drawing from a wide geographic radius. This property is in the best medical office location in Marin County.



KEEGAN & COPPIN  
COMPANY, INC.  
www.keegancoppin.com

**Matt Storms, Partner & Vesa Becam, Partner**

101 Larkspur Landing Circle, Suite 112, Larkspur, CA 94939  
(415) 461-1010 • Fax: (415) 925-2310  
Lic #s: 01233478 & 01459190  
mstorms@keegancoppin.com • vesa@keegancoppin.com

# Premier Medical Office Space for Lease

1260 S. Eliseo Drive, Greenbrae, CA 94904



KEEGAN & COPPIN  
COMPANY, INC.  
www.keegancoppin.com

**Matt Storms, Partner & Vesa Becam, Partner**

101 Larkspur Landing Circle, Suite 112, Larkspur, CA 94939

(415) 461-1010 • Fax: (415) 925-2310

Lic #s: 01233478 & 01459190

mstorms@keegancoppin.com • vesa@keegancoppin.com