

TECH CENTER B

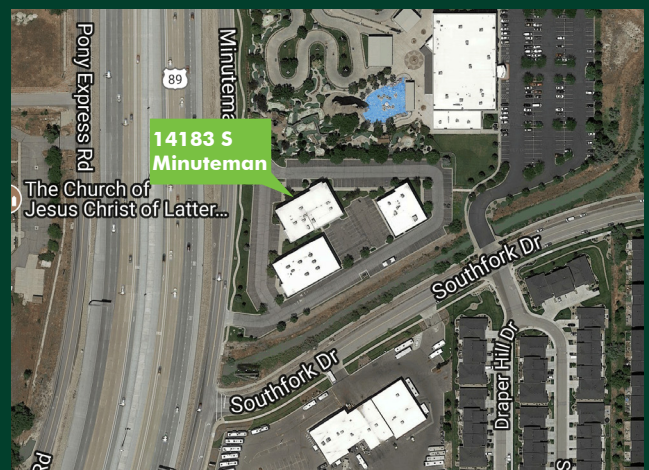
14183 SOUTH MINUTEMAN DRIVE,
DRAPER, UT 84020



GREAT SPACE

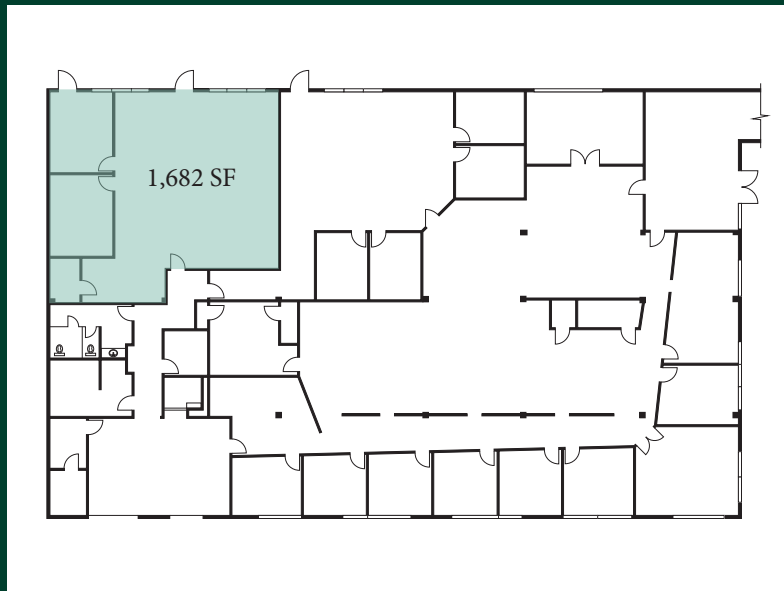
FIRST FLOOR

- + Suite 101: 1,682 RSF
- + \$15.50-17.50/SF, NNN
- + Great freeway access with I-15 visibility
- + Creative space
- + 5/1000 parking





AVAILABLE SPACE
FIRST FLOOR :: SUITE 101



Contact Us

Eric Smith

Senior Vice President
+1 801 869 8008
eric.smith@cbre.com

Laurie Adair

Vice President
+1 801 869 8009
laurie.adair@cbre.com

© 2021 CBRE, Inc. All rights reserved. This information has been obtained from sources believed reliable, but has not been verified for accuracy or completeness. You should conduct a careful, independent investigation of the property and verify all information. Any reliance on this information is solely at your own risk. CBRE and the CBRE logo are service marks of CBRE, Inc. All other marks displayed on this document are the property of their respective owners, and the use of such logos does not imply any affiliation with or endorsement of CBRE. Photos herein are the property of their respective owners. Use of these images without the express written consent of the owner is prohibited.