

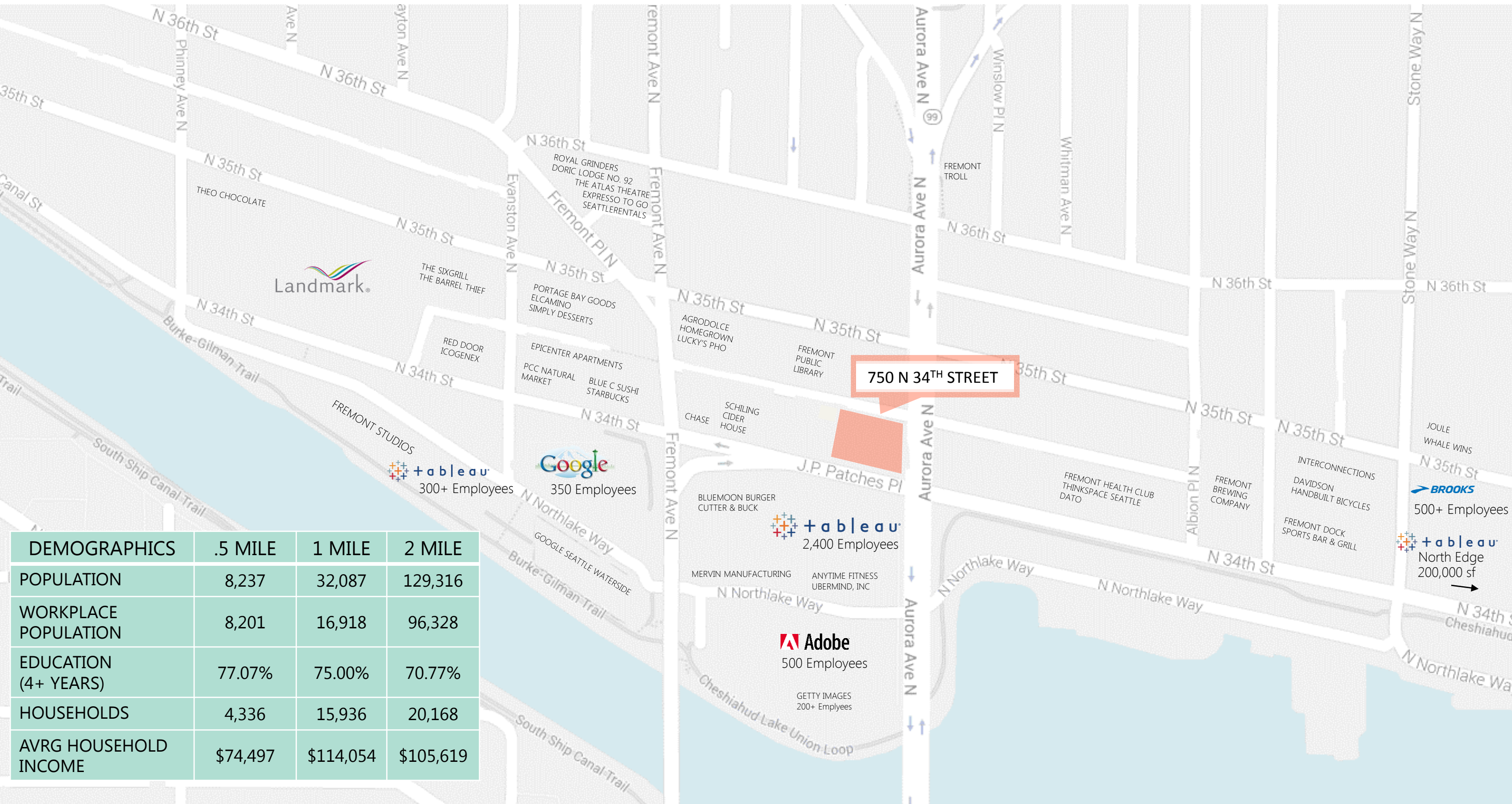
RETAIL FOR LEASE FREMONT | 750 N 34TH STREET



PROPERTY HIGHLIGHTS

- New 5 story office building with Tableau Software leasing all 113,000 square feet of office, with approximately 700-800 employees on site.
- Area now known as “Silicon Canal” is home to Tableau, Adobe, and Google corporate offices with over 4,000 tech employees within 3 blocks.
- Supply constrained retail market with activity throughout all day parts.
- Join retailers such as PCC Natural Grocery Store, Urban Floats, Starbucks Coffee, Milstead Coffee, Brooks Running Store, Whale Wins (Renee Erickson Restaurant), and Joule (Rachel Yang).
- 11,926 sf of uniquely designed retail on ground level.
- Restaurant space available with Type 1 shaft, operable storefronts, and outdoor patio.
- Completion: April 2017

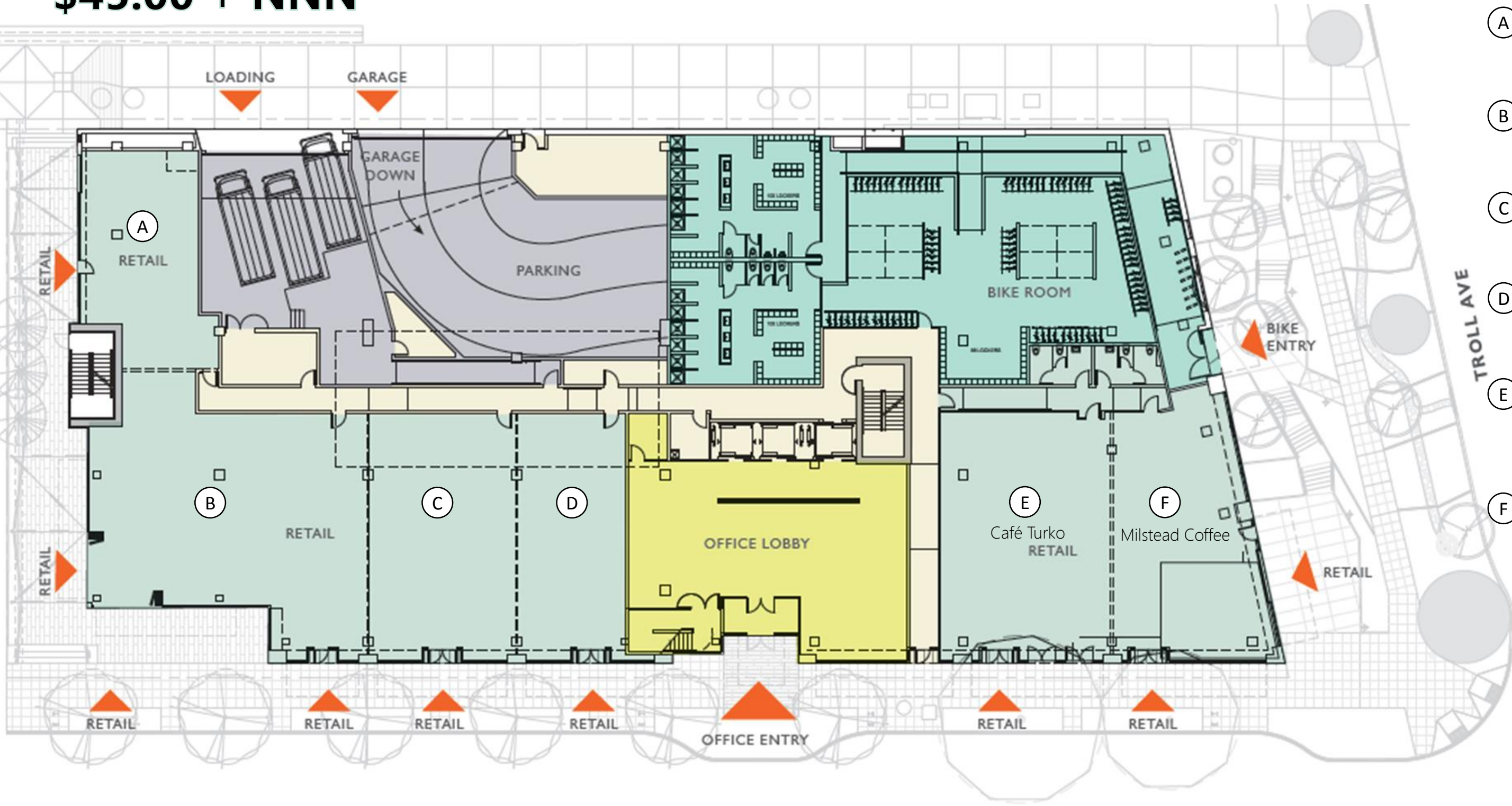




750 N 34TH STREET

DEMOGRAPHICS	.5 MILE	1 MILE	2 MILE
POPULATION	8,237	32,087	129,316
WORKPLACE POPULATION	8,201	16,918	96,328
EDUCATION (4+ YEARS)	77.07%	75.00%	70.77%
HOUSEHOLDS	4,336	15,936	20,168
AVRG HOUSEHOLD INCOME	\$74,497	\$114,054	\$105,619

7,500 SF OF RETAIL \$45.00 + NNN



- Ⓐ 1,311 sf (useable)
1,358 sf (rentable)
- Ⓑ 2,987 sf (usable)
3,094 sf (rentable)
- Ⓒ 1,681 sf (usable)
1,742 sf (rentable)
- Ⓓ 1,294 sf (usable)
1,341 (rentable)
- Ⓔ Café Turko
1,994 sf (usable)
2,315 sf (rentable)
- Ⓕ Milstead Coffee
1,787 sf (usable)
2,075 sf (rentable)

N 34TH ST