



### LOCATION

Building B  
15875 SW 72nd Avenue  
Portland OR 97224

### TOTAL SQ.FT.

4,779 sq.ft.

### FEATURES

Great exposure on SW 72nd Avenue  
Restaurants adjacent

### RATE

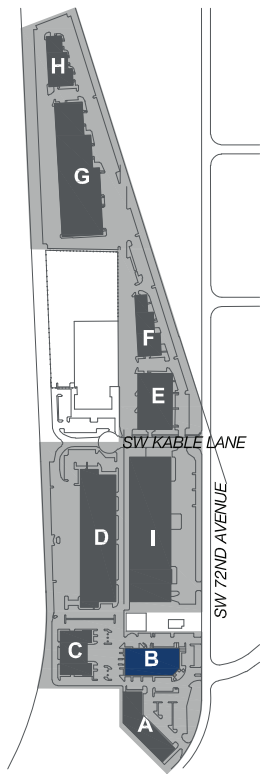
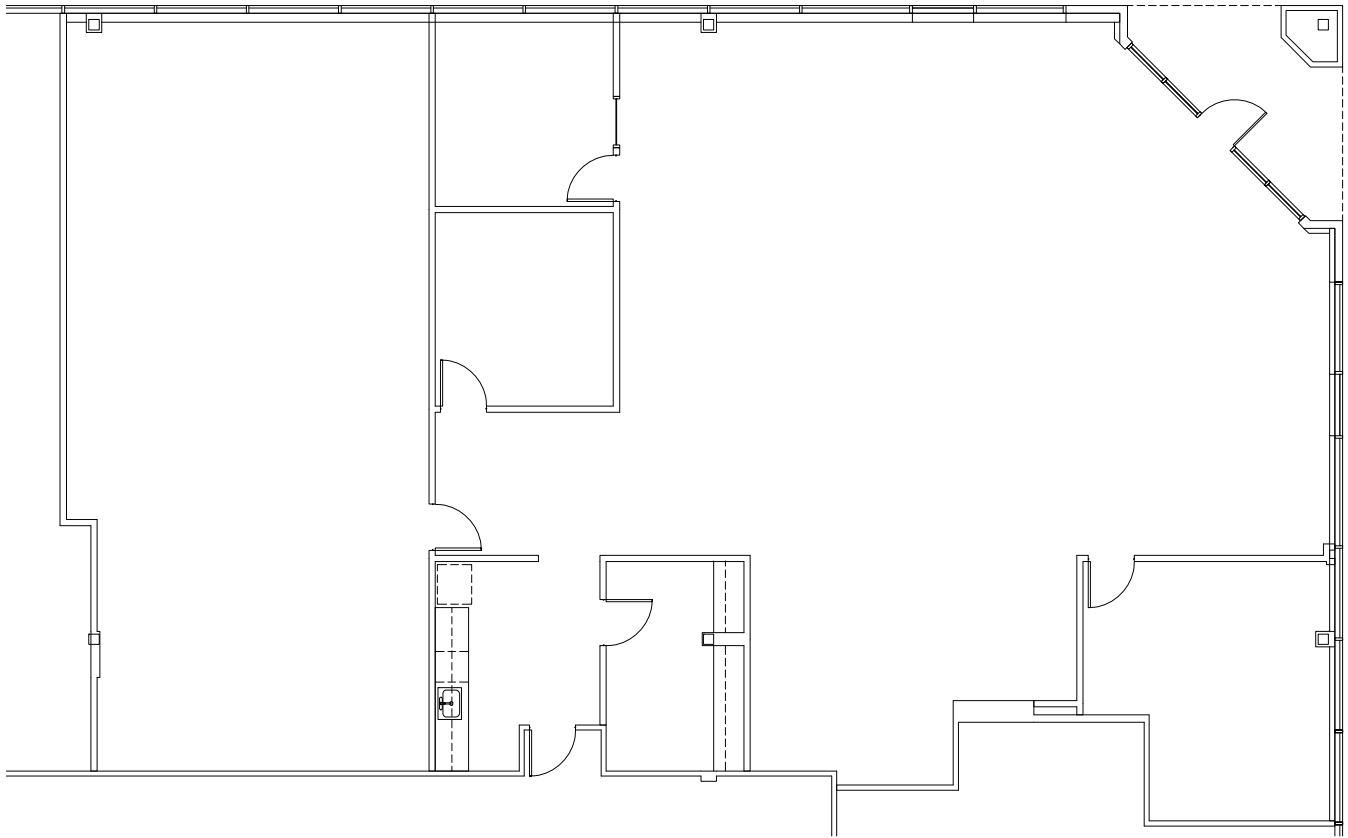
\$26.00/sq.ft.  
Full Service

### LEASING CONTACT

Sam Briggs  
samb@pactrust.com  
503-624-6300

Dave Hicks  
daveh@pactrust.com  
503-624-6300





OREGON BUSINESS PARK III  
Portland, OR 97224



### BUILDING PLAN

15350 SW Sequoia Pkwy Suite 300 Portland OR 97224 • 503.624.6300 • [pactrust.com](http://pactrust.com)

*The square footage and rates quoted herein are subject to change. Square footage and rates are finalized with a signed lease agreement.*

