

SODO WAREHOUSE BUILDING

1750 Occidental Avenue South
Seattle, WA 98134

FOR SALE

For more information, contact:

JOHN KING
(206) 224-9922
jk@johnkingonline.com

AMERICAN WAREHOUSE CO.
P.O. Box 24966
Seattle, WA 98124-0966

ph: (206) 224-9922
fx: (206) 224-9920



FEATURES

- ▶ Tax Parcel Number: 766620-6285
- ▶ Lot Area (Per King County Records): 133,120 sf
- ▶ Building Area (Per King County Records): 78,814 sf
- ▶ Zoning (Per King County Records): IC-85
- ▶ 2010 Assessed Valuation: \$19,209,400
- ▶ Price: \$17,971,000
- ▶ Title Insurance: Provided by Old Republic National Title Insurance Order 5226004714



**All square footage references are approximations.*

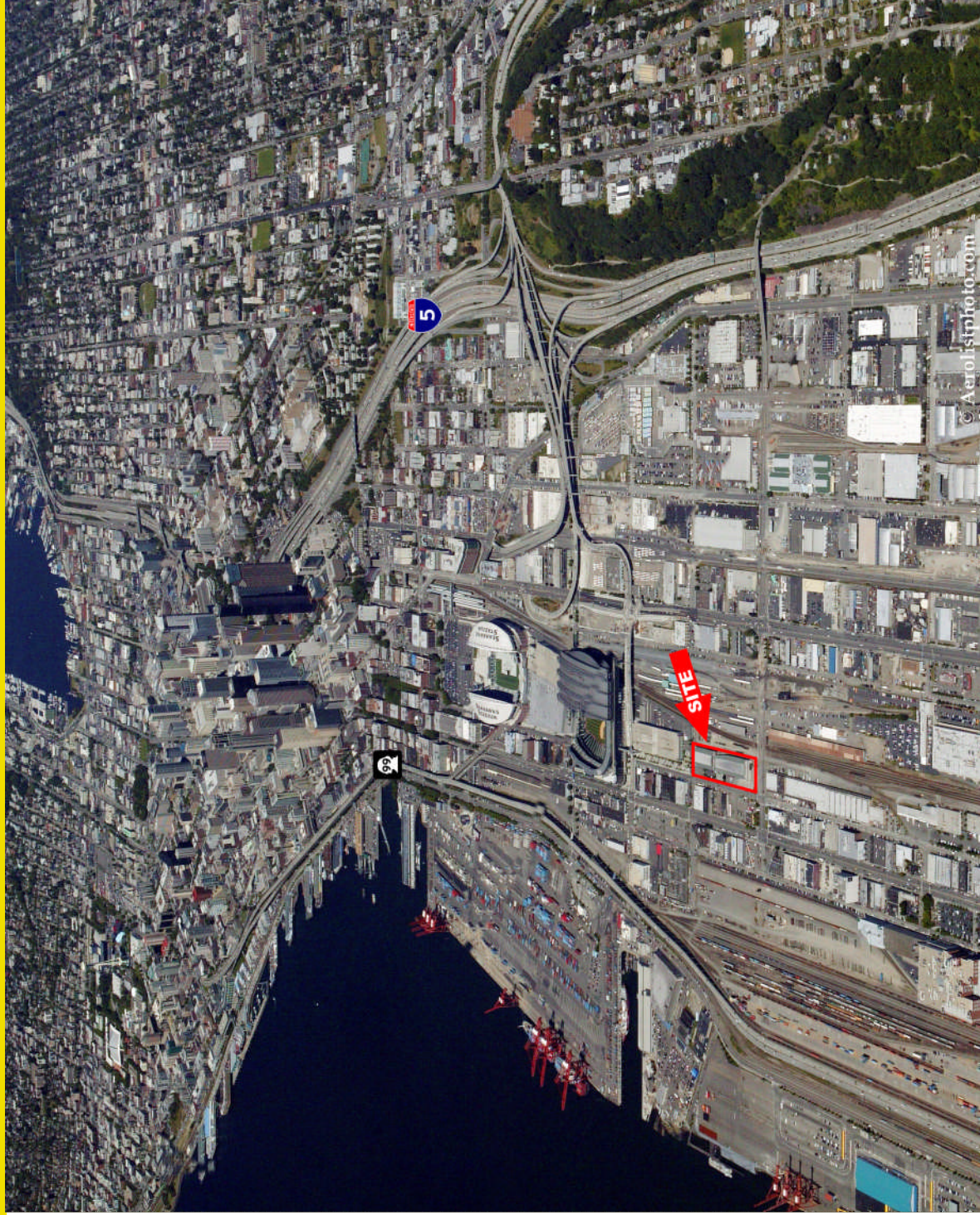
© 2005 American Warehouse Company Inc. We obtained the information above from sources we believe to be reliable. However, we have not verified its accuracy and make no guarantee, warranty or representation about it. It is submitted subject to the possibility of errors, omissions, change of price, rental or other conditions, prior sale, lease or financing, or withdrawal without notice. We include projections, opinions, assumptions or estimates for example only, and they may not represent current or future performance of the property. You and your tax and legal advisors should conduct your own investigation of the property and transaction.

SODO WAREHOUSE BUILDING

1750 Occidental Avenue South

Seattle, WA 98134

FOR SALE



SODO WAREHOUSE BUILDING

1750 Occidental Avenue South

Seattle, WA 98134

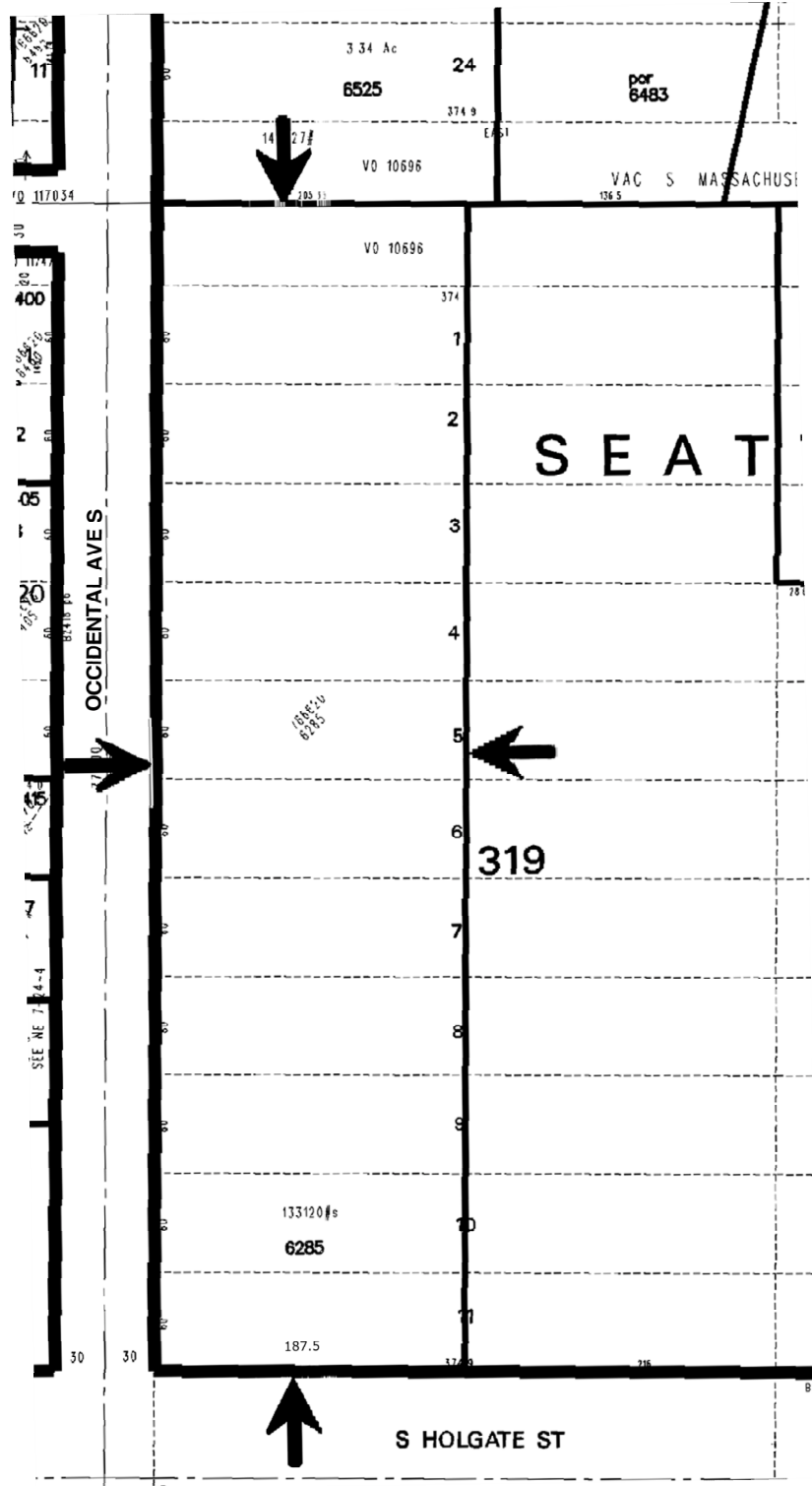
FOR SALE

For more information, contact:

JOHN KING
(206) 224-9922
jk@johnkingonline.com

AMERICAN WAREHOUSE CO.
P.O. Box 24966
Seattle, WA 98124-0966

ph: (206) 224-9922
fx: (206) 224-9920



*All square footage references are approximations.

© 2005 American Warehouse Company Inc. We obtained the information above from sources we believe to be reliable. However, we have not verified its accuracy and make no guarantee, warranty or representation about it. It is submitted subject to the possibility of errors, omissions, change of price, rental or other conditions, prior sale, lease or financing, or withdrawal without notice. We include projections, opinions, assumptions or estimates for example only, and they may not represent current or future performance of the property. You and your tax and legal advisors should conduct your own investigation of the property and transaction.

