

8820 LYNDON STREET
DETROIT, MICHIGAN

INDUSTRIAL FOR SALE
12,600 Square Feet Available



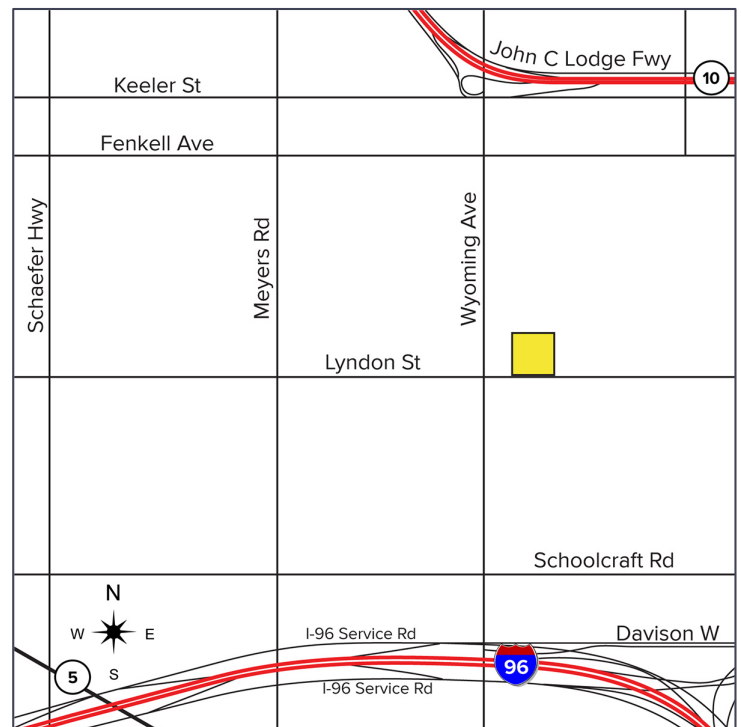
**SIGNATURE
ASSOCIATES**
KNOW SIGNATURE | KNOW RESULTS

AUTO REPAIR SHOP



PROPERTY FEATURES

- 12,600 square feet available
- 800 square feet of office
- 19' – 25' clear height
- (2) 12x6 grade level doors
- (1) 3-Ton and (2) 5-Ton cranes
- Zoned M-2
- 400 amps, 220 volts, 3-phase power
- Good auto repair manufacturing building
- Sale Price: \$495,000



For more information, please contact:

CHRIS MONSOUR
(248) 948 0107
cmonsour@signatureassociates.com

PETER VANDERKAAY
(248) 359 3837
pvanderkaay@signatureassociates.com

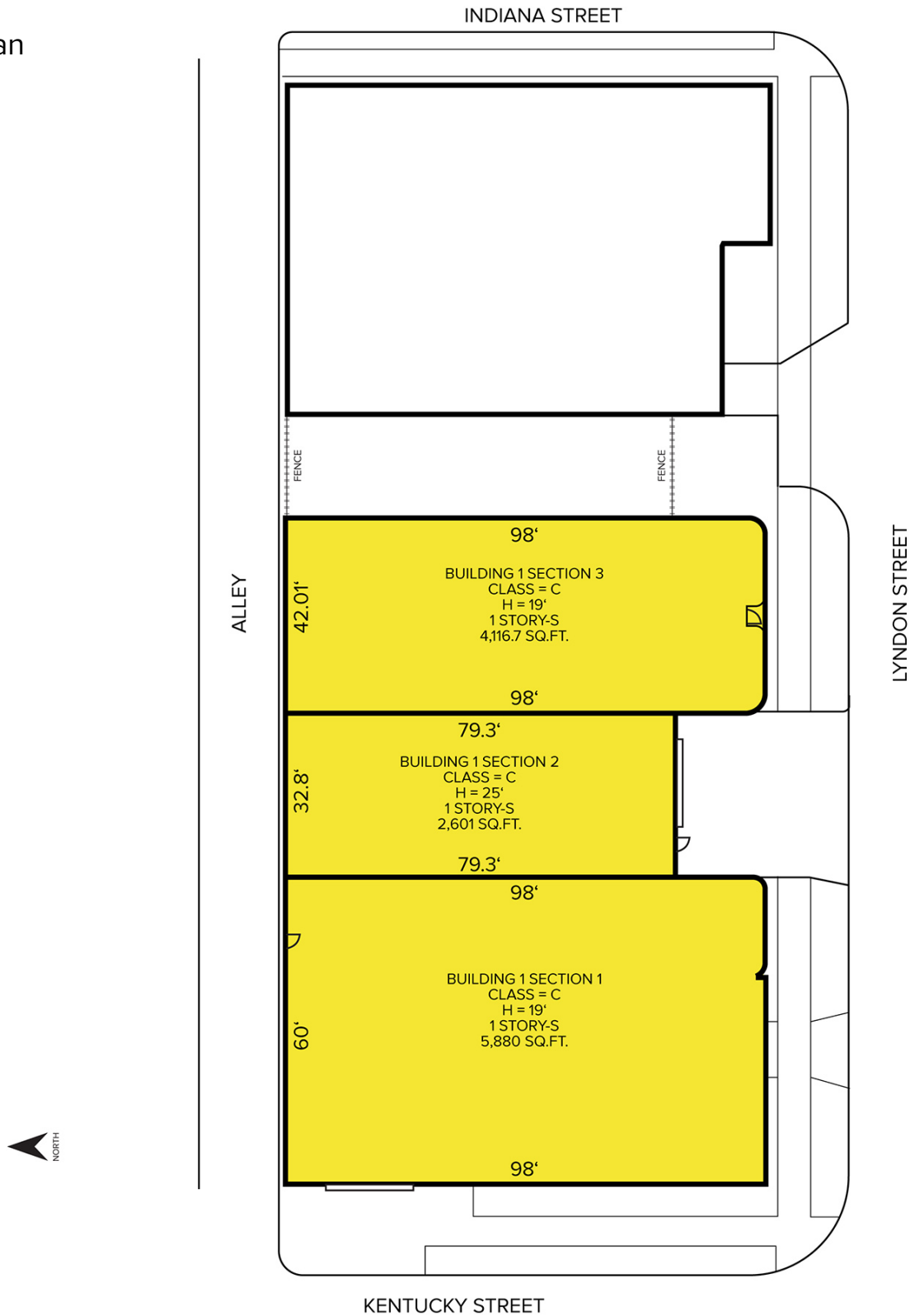
SIGNATURE ASSOCIATES
One Towne Square, Suite 1200
Southfield, MI 48076
www.signatureassociates.com

8820 Lyndon Street – Detroit, Michigan

Industrial For Sale

12,600
Square Feet
AVAILABLE

Site Plan



For more information, please contact:

CHRIS MONSOUR
(248) 948 0107
cmonsour@signatureassociates.com

PETER VANDERKAAY
(248) 359 3837
pvanderkaay@signatureassociates.com

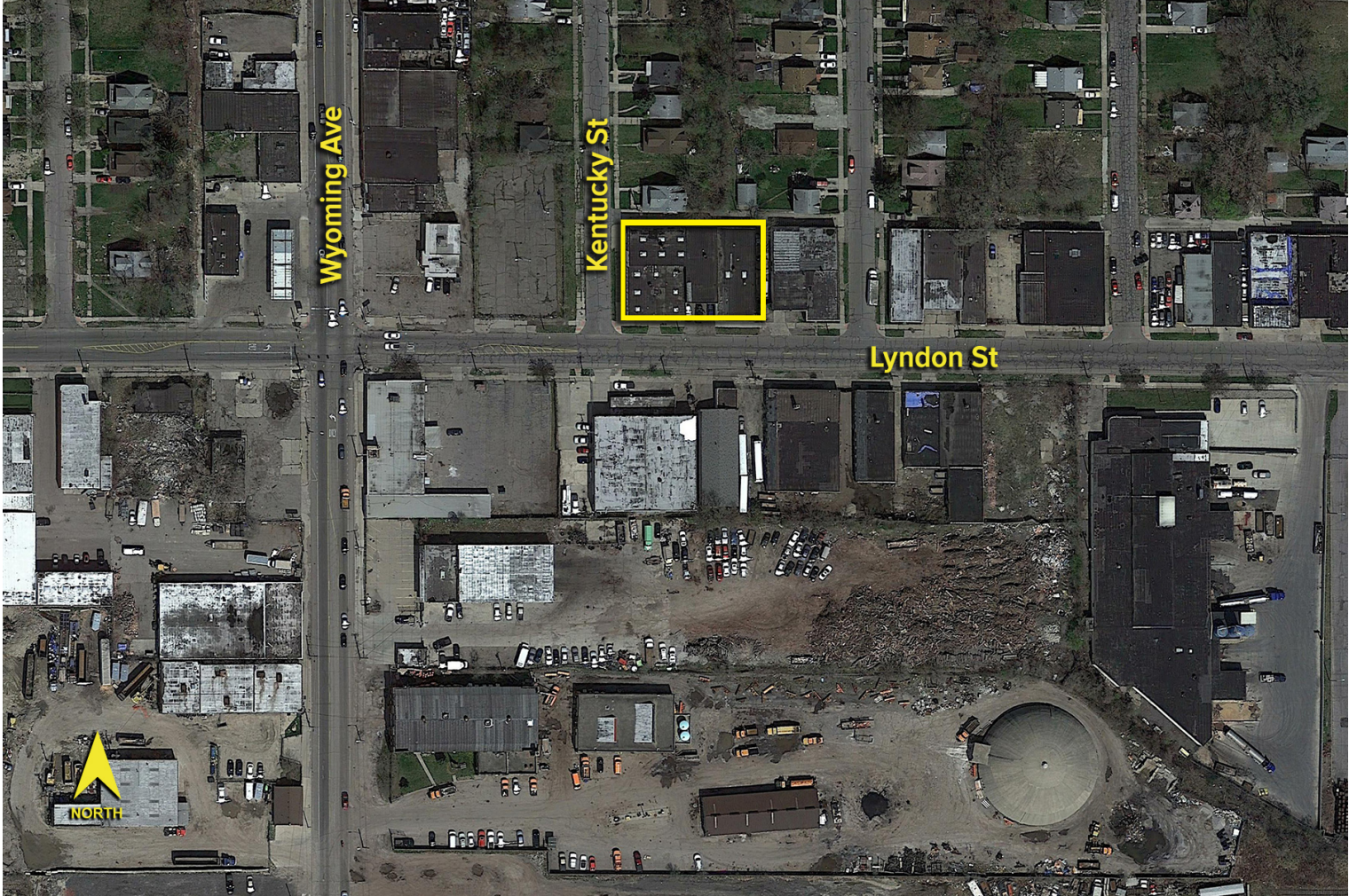
SIGNATURE ASSOCIATES
One Towne Square, Suite 1200
Southfield, MI 48076
www.signatureassociates.com

8820 Lyndon Street – Detroit, Michigan

Industrial For Sale

12,600
Square Feet
AVAILABLE

Aerial



For more information, please contact:
CHRIS MONSOUR
(248) 948 0107
cmonsour@signatureassociates.com

PETER VANDERKAAY
(248) 359 3837
pvanderkaay@signatureassociates.com

SIGNATURE ASSOCIATES
One Towne Square, Suite 1200
Southfield, MI 48076
www.signatureassociates.com

Information is subject to verification and no liability for errors or omissions is assumed. Price is subject to change and listing withdrawal.