

CBRE

3110 CHARLES STREET

HONOLULU, HI 96816



NEW RETAIL AND OFFICE SPACE IN KAPAHULU!



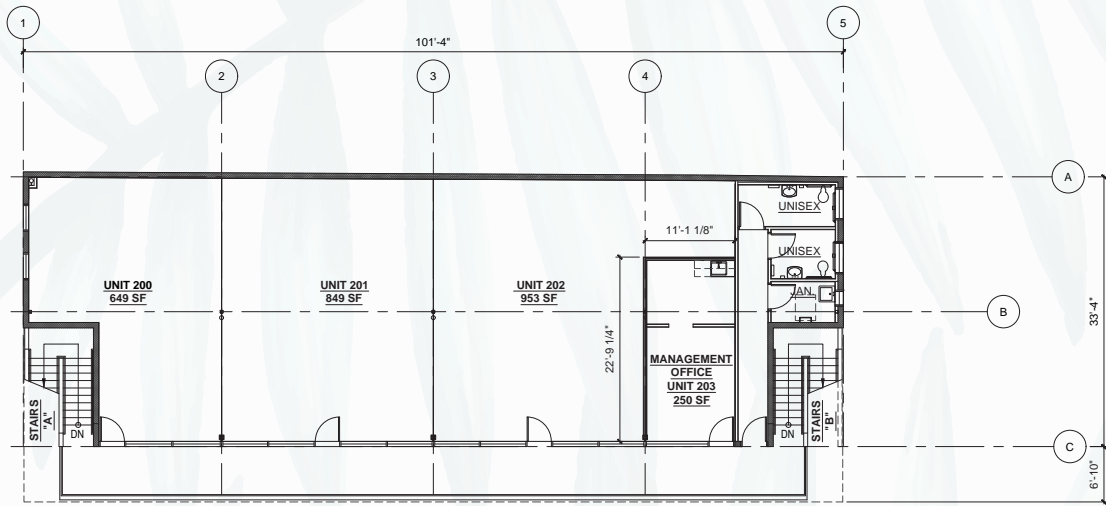
PROPERTY DESCRIPTION

This ground up development on 3110 Charles Street is in the bustling neighborhood of Kapahulu, a popular dining and shopping destination. Walking distance from Waikiki and next door to the iconic Leonard's Bakery, this project delivers an enviable offering of smaller-sized retail and office space.

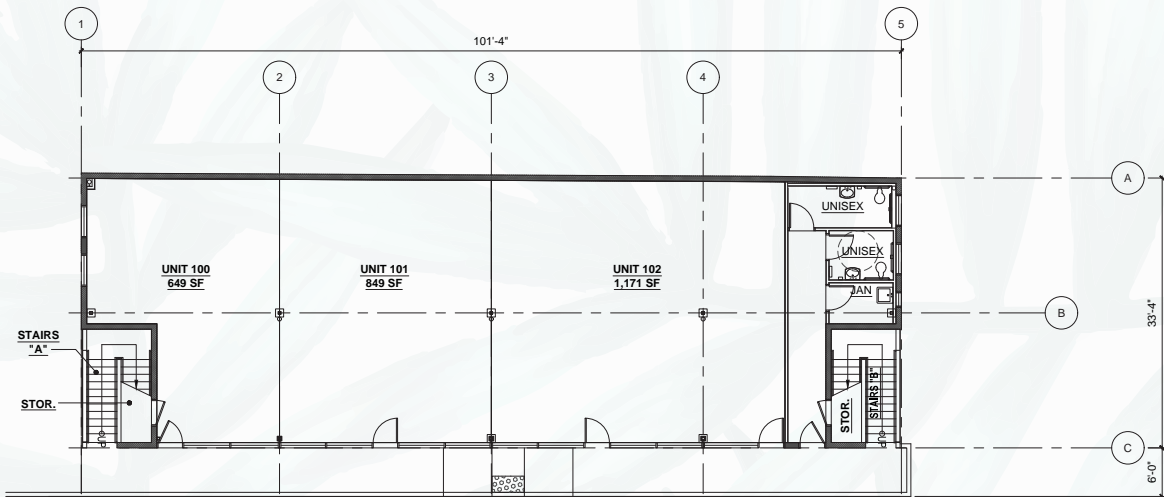
RENTAL RATES

- Units available between 649 to 2,669 square feet
- Base Rent - \$3.00 to \$6.00 per square foot per month
- CAM/Operating Expenses - \$1.25 per square foot per month (estimated)





B UPPER FLOOR PLAN
 SCALE: 1/8" = 1'-0"
 2' 0' 2' 4' 6' 10' 14'



A GROUND FLOOR PLAN
 SCALE: 1/8" = 1'-0"
 2' 0' 2' 4' 6' 10' 14'





CONTACTS

KELLI YANAGAWA WILINSKI (S)

First Vice President
Lic. RS-62770
+1 808 541 5119
kelli.wilinski@cbre.com

JAMES SHIPMAN (B)

Senior Vice President
Lic. RB-17830
+1 808 541 5184
james.shipman@cbre.com

© 2019 CBRE, Inc. All rights reserved. This information has been obtained from sources believed reliable, but has not been verified for accuracy or completeness. You should conduct a careful, independent investigation of the property and verify all information. Any reliance on this information is solely at your own risk. CBRE and the CBRE logo are service marks of CBRE, Inc. All other marks displayed on this document are the property of their respective owners. Photos herein are the property of their respective owners. Use of these images without the express written consent of the owner is prohibited.
KYW:BS_3110 Charles_BRO v7_11.07.19

CBRE