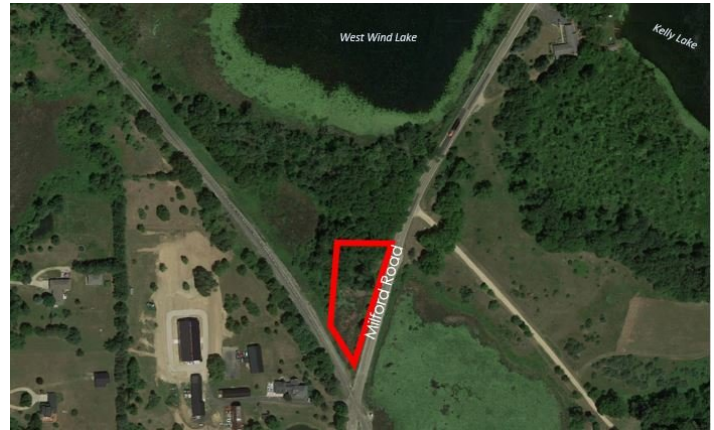


# Milford Road

## Milford Road, Holly, MI 48442



Listing ID:	30450867
Status:	Active
Property Type:	Vacant Land For Sale
Possible Uses:	Residential (Single Family)
Gross Land Area:	0.80 Acres
Sale Price:	\$20,000
Unit Price:	\$25,000 Per Acre
Sale Terms:	Cash to Seller
Nearest MSA:	Detroit-Warren-Dearborn
County:	Oakland
Tax ID/APN:	0615376001



### Overview/Comments

- Sale Price: \$20,000. - .8 (34,848SF) Acres of Land located off of Milford Rd, South of Davisburg Rd. - Zoned R1-A: Single Family Residential . - Located in the Holly School District . - PIN: 06-15-376-001.



#### More Information Online

<http://www.cpix.net//listing/30450867>

#### QR Code

Scan this image with your mobile device:



### Property Contacts

#### Alex Tokarz

Dominion Real Estate Advisors  
248-399-9999 [0]  
[atokarz@dominionra.com](mailto:atokarz@dominionra.com)