

For Sale

**\$1,025,000**

**21 South 10th Street**

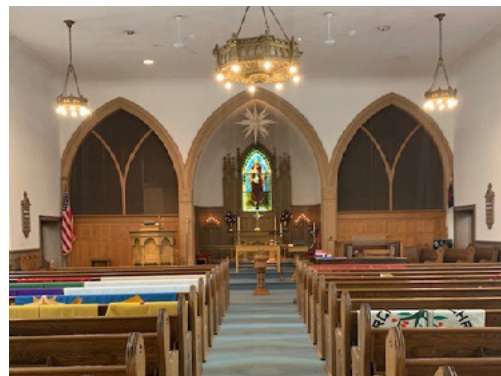
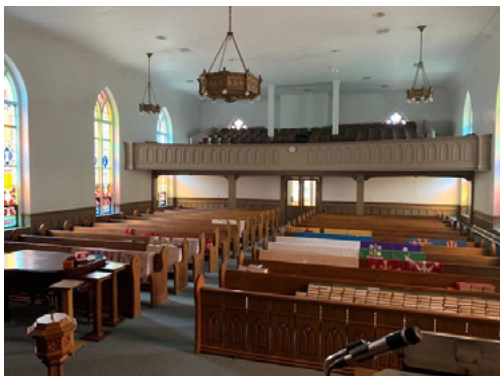
**Quakertown, Pennsylvania 18951**



**Adaptive Re-Use  
Development Opportunity  
within the Heart of Old  
Quakertown Borough**



- Premises: Church, School Bldg & Parking Lot: 18,188 SF - 2 Stories including lower level
- Lots size: 48,003 SF – 1.10 Acres
- Zoning R3
- Adjacent Single Residence: 3 Floors including basement 4 bedrooms, 2 Full Baths, Masonry Exterior
- Sewer & Water: Public Service
- Vacant Adjacent Lot: 15,377 SF – 0.35 Acres



For more information:

**Thomas Bond**

tbond@geisrealty.com

215 568 1755

**Lou Tonon**

ltonon@geisrealty.com

215 568 1590

**Dana Wilber**

dwilber@geisrealty.com

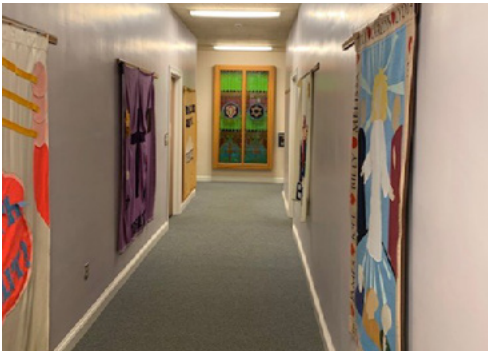
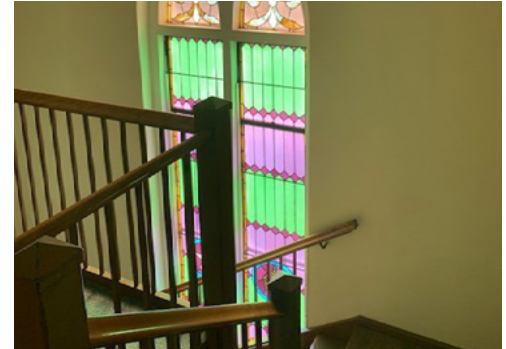
215 701 3266

Duane Morris Plaza, 30 South 17th Street, Suite 210, Philadelphia, PA 19103

[geisrealty.com](http://geisrealty.com)

21 South 10th Street  
Quakertown, Pennsylvania 18951

## Photos



For more information:

**Thomas Bond**

[tbond@geisrealty.com](mailto:tbond@geisrealty.com)

215 568 1755

**Lou Tonon**

[ltonon@geisrealty.com](mailto:ltonon@geisrealty.com)

215 568 1590

**Dana Wilber**

[dwilber@geisrealty.com](mailto:dwilber@geisrealty.com)

215 701 3266

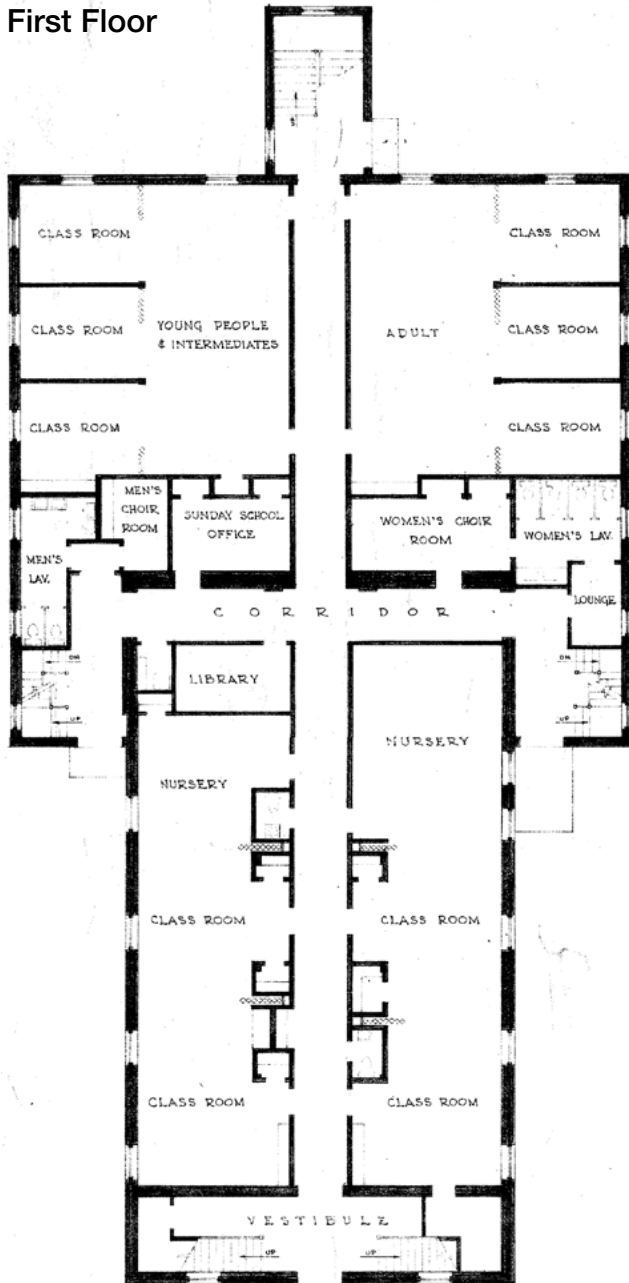
Duane Morris Plaza // 30 South 17th Street, Suite 210, Philadelphia, PA 19103 // (215) 568-7222 Tel // (215) 568-5043 Fax // [geisrealty.com](http://geisrealty.com)

NO WARRANTY OR REPRESENTATION, EXPRESS OR IMPLIED, IS MADE AS TO THE ACCURACY OF THE INFORMATION CONTAINED HEREIN, AND THE SAME IS SUBMITTED SUBJECT TO ERRORS, OMISSIONS, CHANGE OF PRICE, RENTAL OR OTHER CONDITIONS, PRIOR SALE, LEASE OR FINANCING, OR WITHDRAWAL WITHOUT NOTICE, AND OF ANY SPECIAL LISTING CONDITIONS IMPOSED BY OUR PRINCIPALS NO WARRANTIES OR REPRESENTATIONS ARE MADE AS TO THE CONDITION OF THE PROPERTY OR ANY HAZARDS CONTAINED THEREIN ARE ANY TO BE IMPLIED.

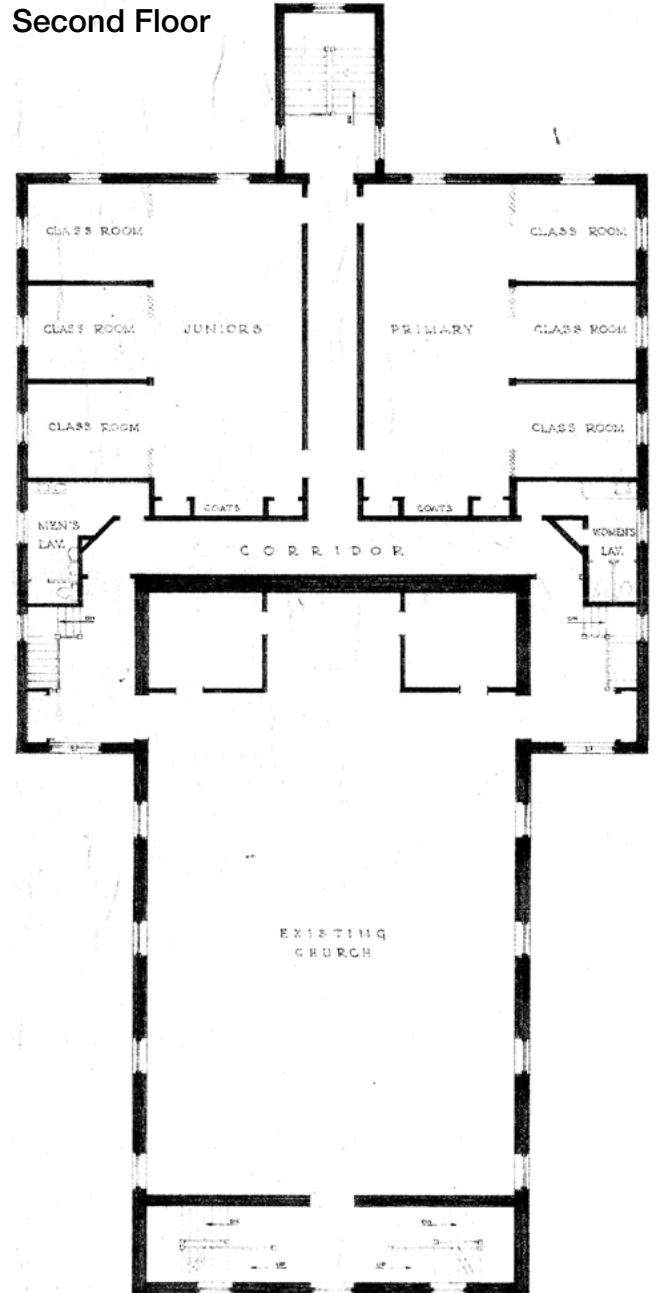
21 South 10th Street  
Quakertown, Pennsylvania 18951

## Floor Plans

First Floor



Second Floor



For more information:

**Thomas Bond**

tbond@geisrealty.com

215 568 1755

**Lou Tonon**

ltonon@geisrealty.com

215 568 1590

**Dana Wilber**

dwilber@geisrealty.com

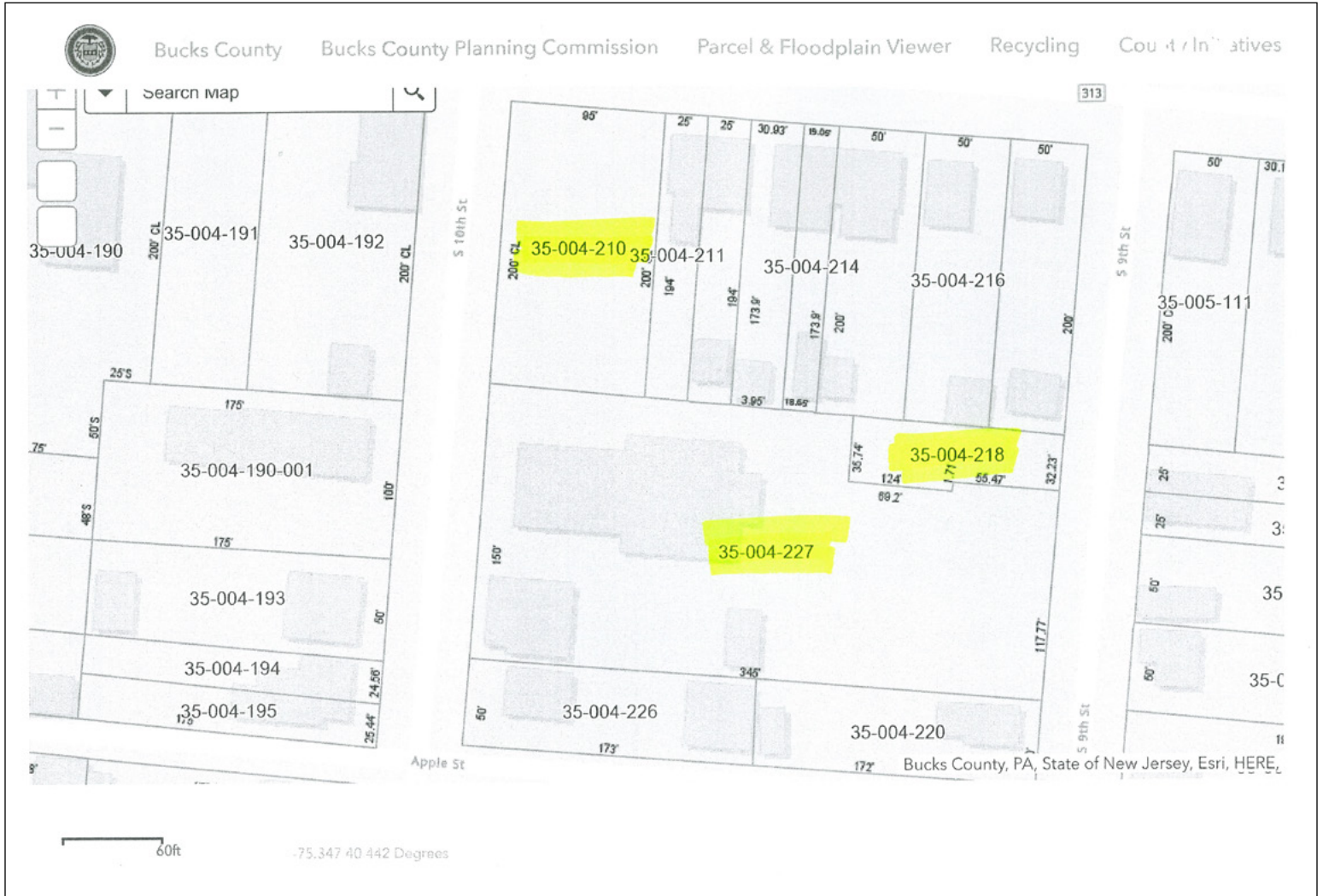
215 701 3266

Duane Morris Plaza // 30 South 17th Street, Suite 210, Philadelphia, PA 19103 // (215) 568-7222 Tel // (215) 568-5043 Fax // geisrealty.com

NO WARRANTY OR REPRESENTATION, EXPRESS OR IMPLIED, IS MADE AS TO THE ACCURACY OF THE INFORMATION CONTAINED HEREIN, AND THE SAME IS SUBMITTED SUBJECT TO ERRORS, OMISSIONS, CHANGE OF PRICE, RENTAL OR OTHER CONDITIONS, PRIOR SALE, LEASE OR FINANCING, OR WITHDRAWAL WITHOUT NOTICE, AND OF ANY SPECIAL LISTING CONDITIONS IMPOSED BY OUR PRINCIPALS NO WARRANTIES OR REPRESENTATIONS ARE MADE AS TO THE CONDITION OF THE PROPERTY OR ANY HAZARDS CONTAINED THEREIN ARE ANY TO BE IMPLIED.

21 South 10th Street  
Quakertown, Pennsylvania 18951

## Tax Parcel Map



For more information:

**Thomas Bond**

tbond@geisrealty.com

215 568 1755

**Lou Tonon**

ltonon@geisrealty.com

215 568 1590

**Dana Wilber**

dwilber@geisrealty.com

215 701 3266

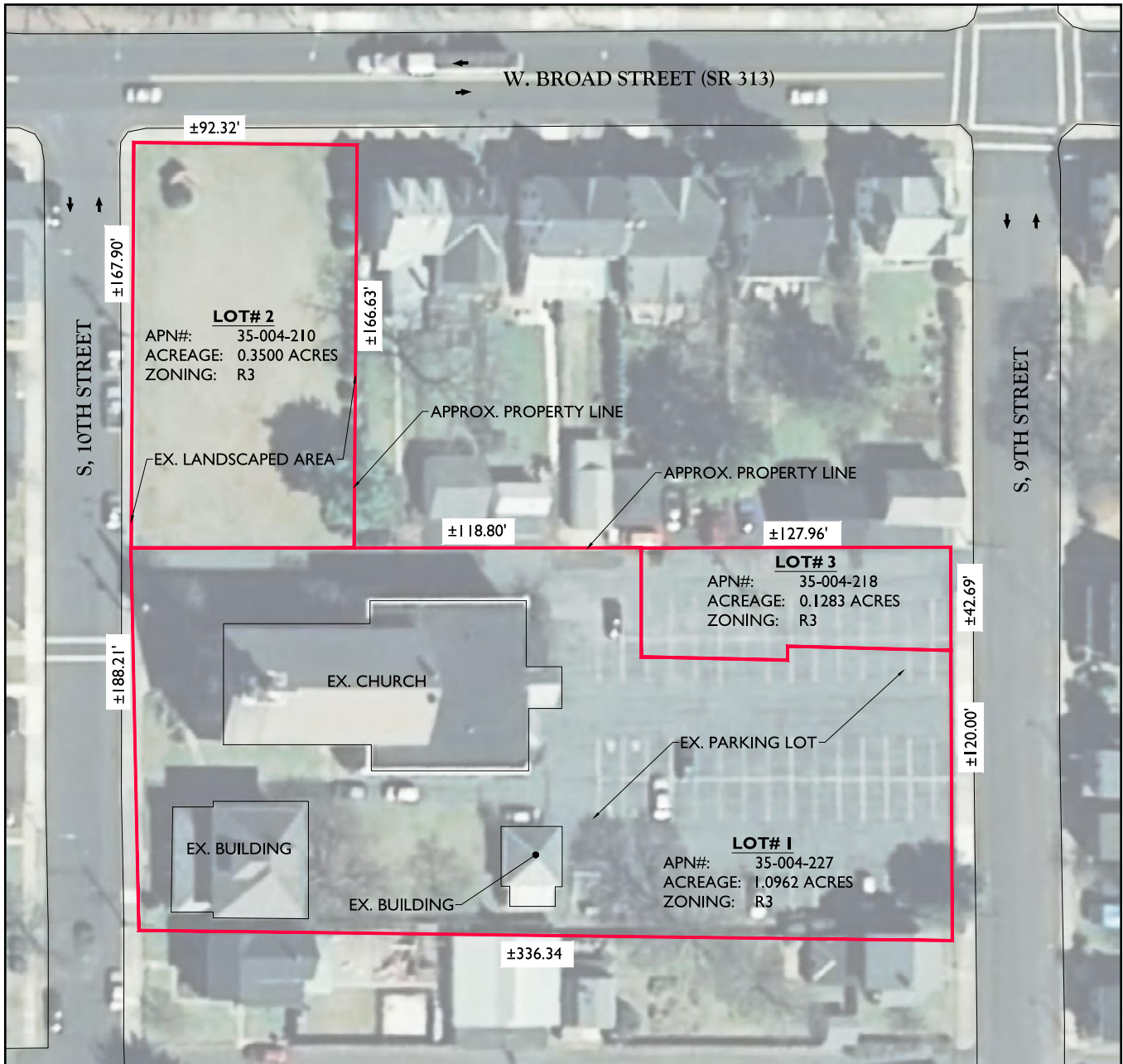
Duane Morris Plaza // 30 South 17th Street, Suite 210, Philadelphia, PA 19103 // (215) 568-7222 Tel // (215) 568-5043 Fax // geisrealty.com

NO WARRANTY OR REPRESENTATION, EXPRESS OR IMPLIED, IS MADE AS TO THE ACCURACY OF THE INFORMATION CONTAINED HEREIN, AND THE SAME IS SUBMITTED SUBJECT TO ERRORS, OMISSIONS, CHANGE OF PRICE, RENTAL OR OTHER CONDITIONS, PRIOR SALE, LEASE OR FINANCING, OR WITHDRAWAL WITHOUT NOTICE, AND OF ANY SPECIAL LISTING CONDITIONS IMPOSED BY OUR PRINCIPALS NO WARRANTIES OR REPRESENTATIONS ARE MADE AS TO THE CONDITION OF THE PROPERTY OR ANY HAZARDS CONTAINED THEREIN ARE ANY TO BE IMPLIED.

# 21 South 10th Street

Quakertown, Pennsylvania 18951

## Survey Site Plan



For more information:

**Thomas Bond**

tbond@geisrealty.com

215 568 1755

**Lou Tonon**

ltonon@geisrealty.com

215 568 1590

**Dana Wilber**

dwilber@geisrealty.com

215 701 3266

Duane Morris Plaza // 30 South 17th Street, Suite 210, Philadelphia, PA 19103 // (215) 568-7222 Tel // (215) 568-5043 Fax // geisrealty.com

NO WARRANTY OR REPRESENTATION, EXPRESS OR IMPLIED, IS MADE AS TO THE ACCURACY OF THE INFORMATION CONTAINED HEREIN, AND THE SAME IS SUBMITTED SUBJECT TO ERRORS, OMISSIONS, CHANGE OF PRICE, RENTAL OR OTHER CONDITIONS, PRIOR SALE, LEASE OR FINANCING, OR WITHDRAWAL WITHOUT NOTICE, AND OF ANY SPECIAL LISTING CONDITIONS IMPOSED BY OUR PRINCIPALS NO WARRANTIES OR REPRESENTATIONS ARE MADE AS TO THE CONDITION OF THE PROPERTY OR ANY HAZARDS CONTAINED THEREIN ARE ANY TO BE IMPLIED.



# 21 South 10th Street

Quakertown, Pennsylvania 18951

## Location



Parcel #1: APN: 35-004-227  
 Owner Name: St. John's Lutheran Church  
 Lot Size: 47,750 SF; 1.0962 Acres  
 County Use Description: Churches  
 Land Use Description: Religious  
 Zoning: R3

Parcel #2: 35-004-218  
 Owner Name: St. John's Lutheran Church  
 Lot Size: 4,182 SF; 0.1 Acres  
 County Use Description: Church Parking Lots  
 Land Use Description: Religious  
 Zoning: R3

Parcel #3: 35-004-210  
 Owner Name: St. John's Lutheran Church  
 Lot Size: 15,377 SF; 0.35 Acres  
 County Use Description: Churches  
 Land Use Description: Religious  
 Zoning: R3



For more information:

**Thomas Bond**  
 tbond@geisrealty.com  
 215 568 1755

**Lou Tonon**  
 ltonon@geisrealty.com  
 215 568 1590

**Dana Wilber**  
 dwilber@geisrealty.com  
 215 701 3266

Duane Morris Plaza // 30 South 17th Street, Suite 210, Philadelphia, PA 19103 // (215) 568-7222 Tel // (215) 568-5043 Fax // geisrealty.com

NO WARRANTY OR REPRESENTATION, EXPRESS OR IMPLIED, IS MADE AS TO THE ACCURACY OF THE INFORMATION CONTAINED HEREIN, AND THE SAME IS SUBMITTED SUBJECT TO ERRORS, OMISSIONS, CHANGE OF PRICE, RENTAL OR OTHER CONDITIONS, PRIOR SALE, LEASE OR FINANCING, OR WITHDRAWAL WITHOUT NOTICE, AND OF ANY SPECIAL LISTING CONDITIONS IMPOSED BY OUR PRINCIPALS NO WARRANTIES OR REPRESENTATIONS ARE MADE AS TO THE CONDITION OF THE PROPERTY OR ANY HAZARDS CONTAINED THEREIN ARE ANY TO BE IMPLIED.