

Medical Office

1019 Division Avenue | Tacoma, WA



FOR LEASE

Medical Office Space Adjacent to Tacoma General
and Mary Bridge Children's Hospital

Benjamin A. Norbe
253.722.1410
bnorbe@kiddermathews.com

kiddermathews.com



Medical Office

1019 Division Avenue | Tacoma, WA

Features

AVAILABLE	2,280 square feet
RATE	\$28.00 PSF, per year, NNN
PARKING	11 free on-site surface parking available
IMPROVEMENTS	Reception, up to 6 exam rooms, lab space, private office, two restrooms, and storage
LOCATION	Located adjacent to Multicare Health System's Campus of Tacoma General and Mary Bridge Children's Hospital
SIGNAGE	Exterior building signage available



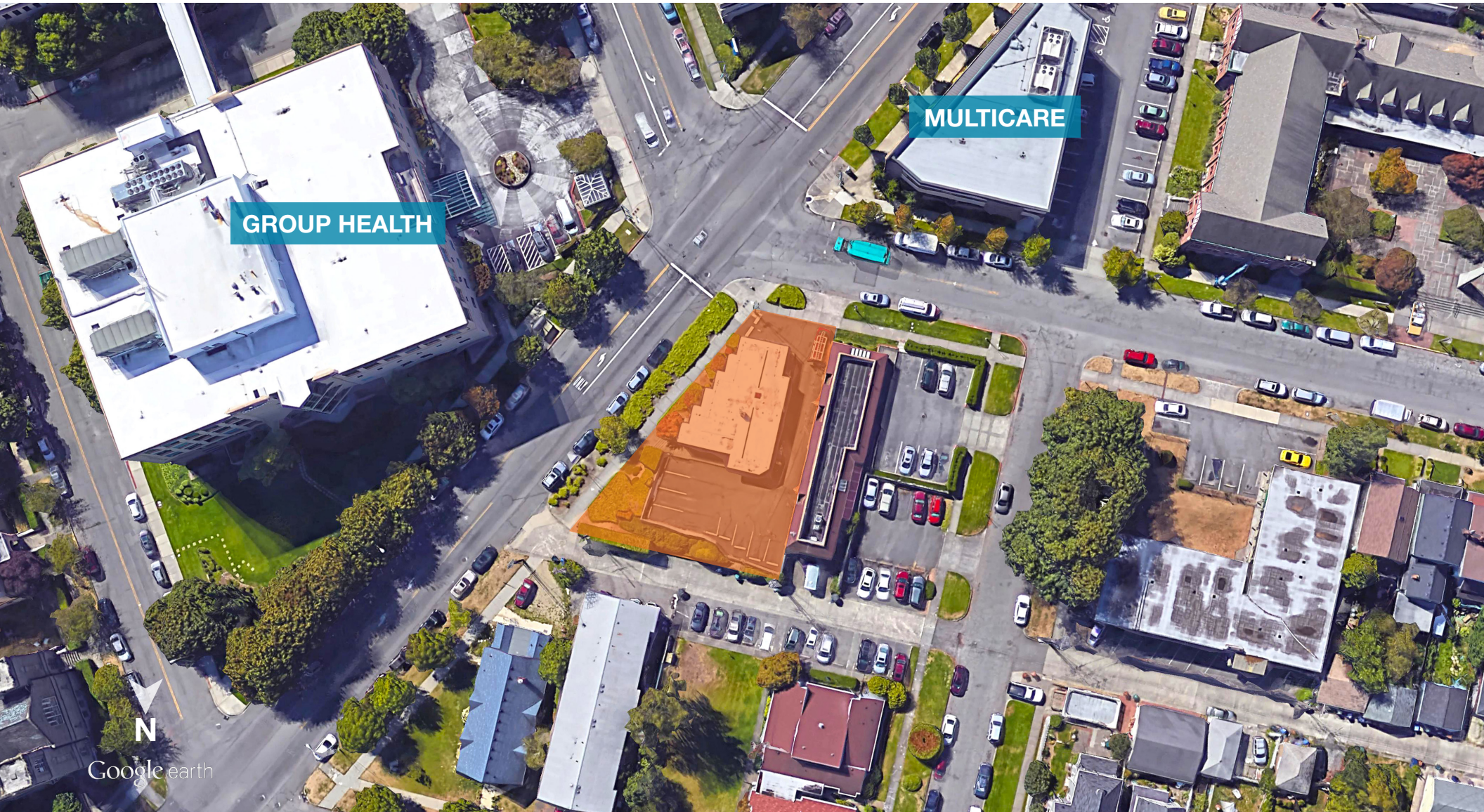
Benjamin A. Norbe
253.722.1410
bnorbe@kiddermathews.com

kiddermathews.com



Medical Office

1019 Division Avenue | Tacoma, WA



Benjamin A. Norbe
253.722.1410
bnorbe@kiddermathews.com

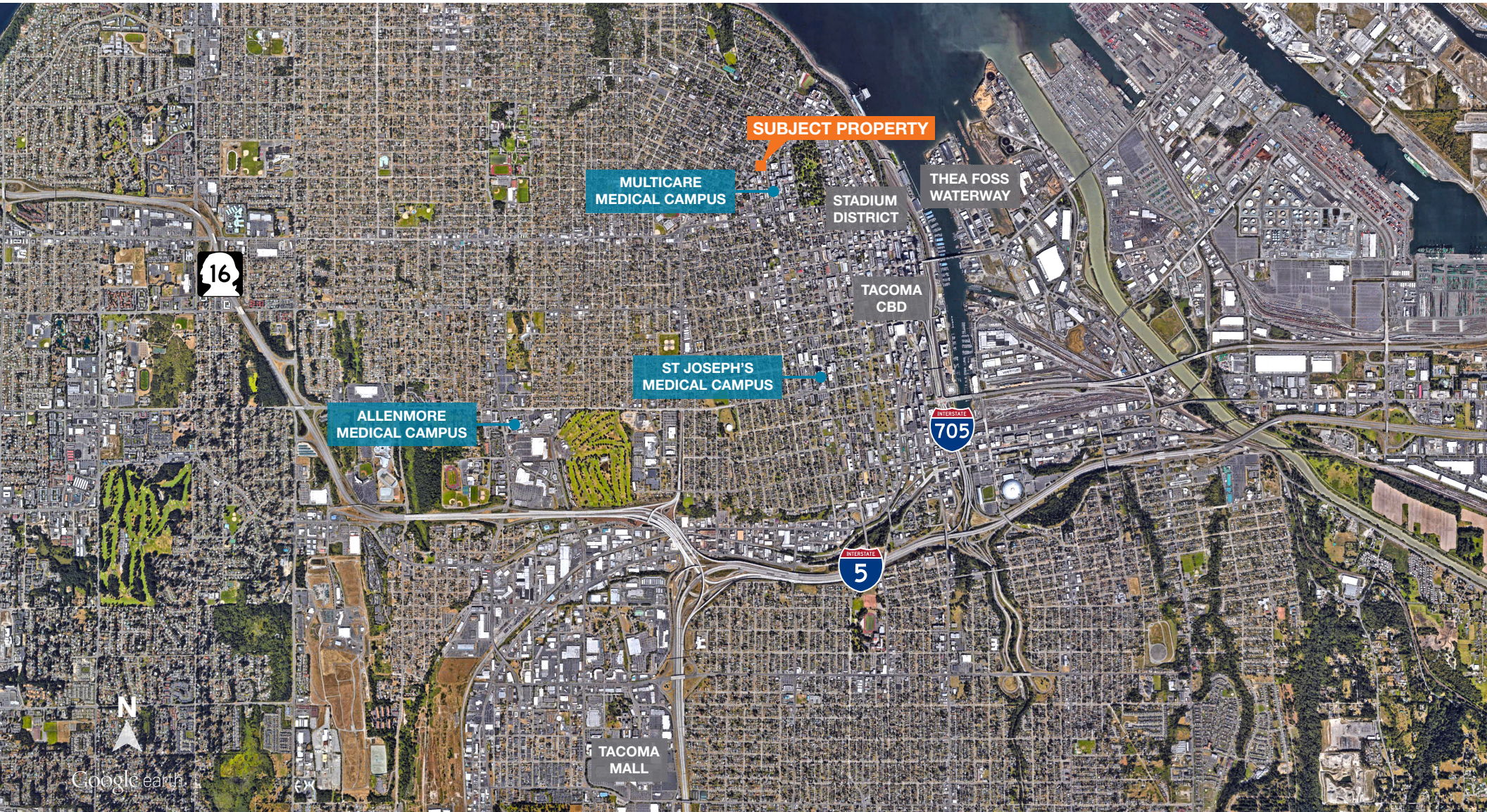
kiddermathews.com



This information supplied herein is from sources we deem reliable. It is provided without any representation, warranty or guarantee, expressed or implied as to its accuracy. Prospective Buyer or Tenant should conduct an independent investigation and verification of all matters deemed to be material, including, but not limited to, statements of income and expenses. Consult your attorney, accountant, or other professional advisor.

Medical Office

1019 Division Avenue | Tacoma, WA



Benjamin A. Norbe
253.722.1410
bnorbe@kiddermathews.com

kiddermathews.com



This information supplied herein is from sources we deem reliable. It is provided without any representation, warranty or guarantee, expressed or implied as to its accuracy. Prospective Buyer or Tenant should conduct an independent investigation and verification of all matters deemed to be material, including, but not limited to, statements of income and expenses. Consult your attorney, accountant, or other professional advisor.

Medical Office

1019 Division Avenue | Tacoma, WA

Floor Plan



Benjamin A. Norbe
253.722.1410
bnorbe@kiddermathews.com

kiddermathews.com

