

## LOCATION

1115 Vine Street | Cincinnati, Ohio 45202

## HIGHLIGHTS

- Located in Cincinnati's historic Over-the-Rhine
- Encompassing over 360 acres, Over-the-Rhine is a walkable, historic neighborhood fed by two major north/south interstates, I-75 & I-71
- Located on new street car line
- Adjacent to the Ensemble Theater and around the corner from the new \$727M School for Creative & Performing Arts and revitalized Washington Park, with a 450-space parking garage
- 21,400 residents within a one mile radius
- 20 new restaurants in OTR projected to perform over \$1,000 per SF in 2015

## DEMOGRAPHICS

2016 Estimates	1 mi	3 mi	5 mi
Population	25,681	156,486	
329,848			
Households	12,831	69,941	145,341
Average HH Income	\$61,262	\$51,476	\$57,699
Daytime Employees	140,306	259,182	321,167

## AVAILABLE SPACE

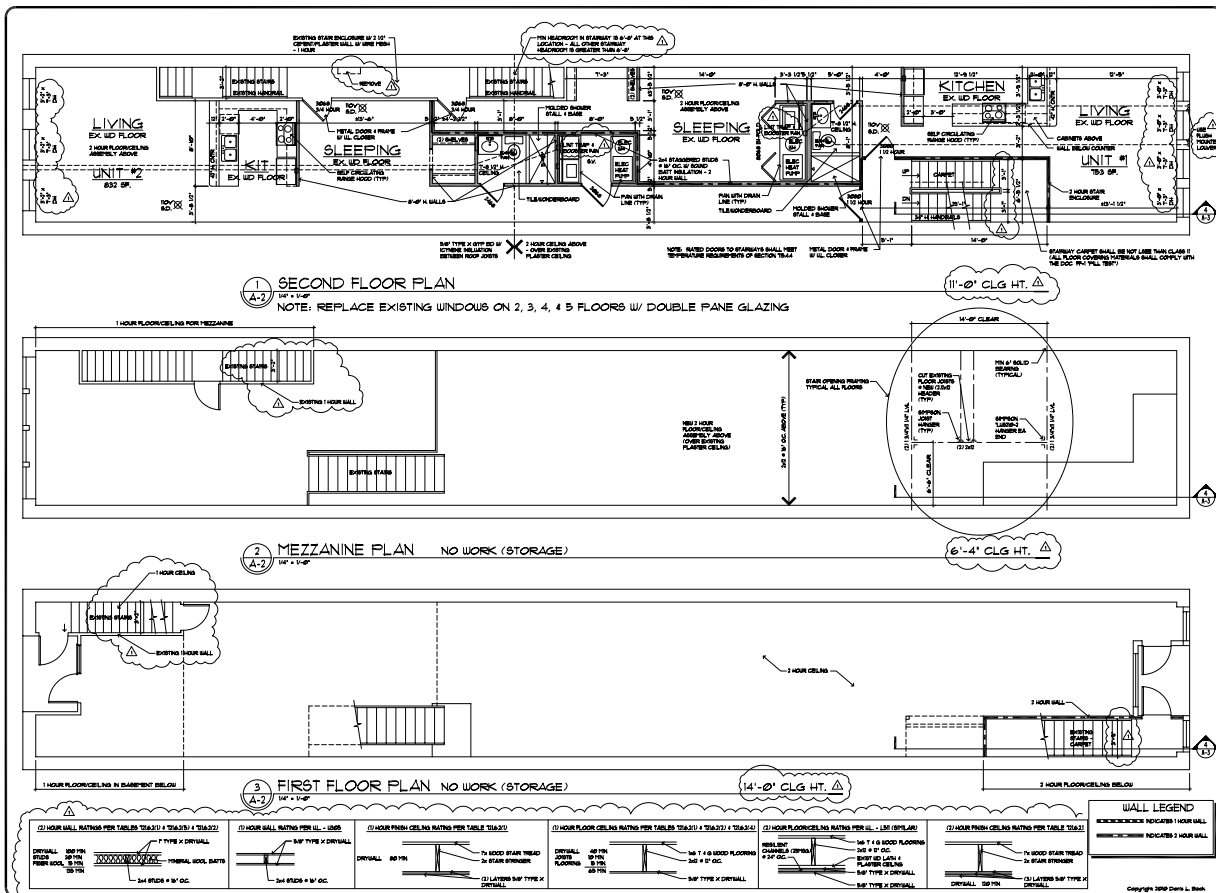
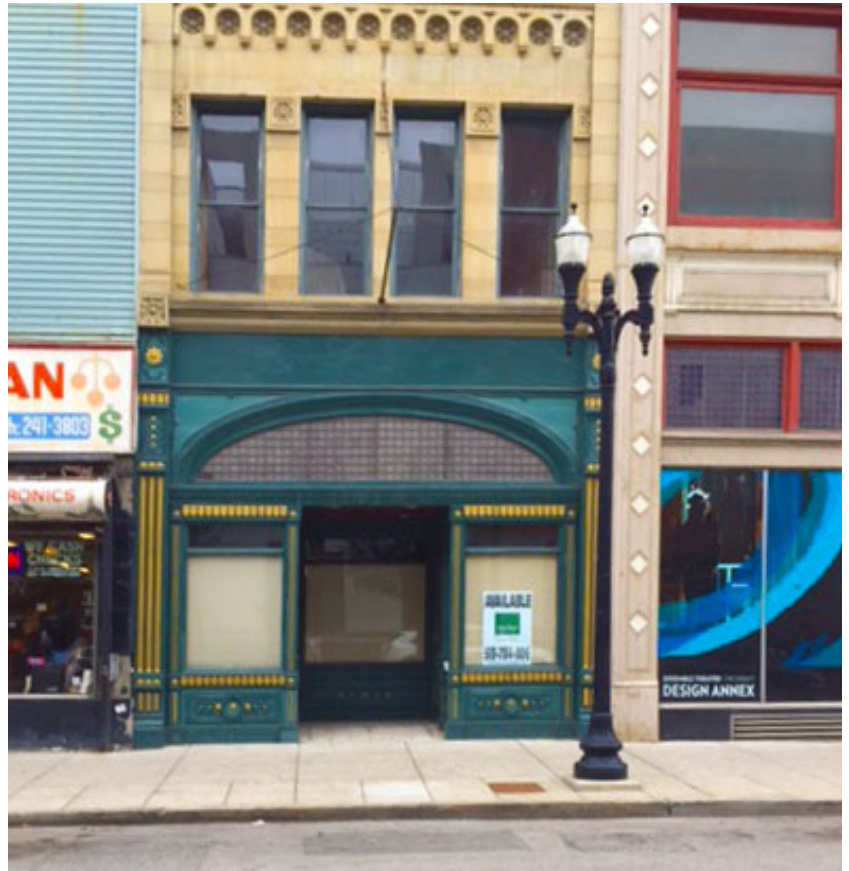
3rd Floor	1,100 SF
4th Floor	1,100 SF
5th Floor	1,100 SF

## CONTACT

Amy Holter • aholter@anchor-associates.com  
 Jason Gibson • jgibson@anchor-associates.com  
 Office Phone • 513/784-1106  
 Website • www.anchor-associates.com

## ANCHOR ASSOCIATES

3825 Edwards Road, Suite 630  
 Cincinnati, OH 45209  
 513/784-1106



Revision: **1110**

**DENIS L. BACK & ASSOCIATES**  
2105 ALPINE PLACE, CINCINNATI OH 45206 513-963-0770  
Architects of Building Construction

**1115 VINE STREET**  
CINCINNATI, OH

DATE: 4/23/20  
COMING:  
SHEET NO:  
**A-2**



# Over THE Rhine

for more info visit [www.otrchamber.com](http://www.otrchamber.com)

Map production made possible by the City of Cincinnati and The Corporation for Findlay Market.

**SHOPS**

**EATERIES**

**BARs + PUBS**

**PERSONAL SERVICES  
FITNESS**

**P**  
PARKING

**THEATER + VENUES  
+ ENTERTAINMENT**

**OFFICES +  
EDUCATION**

**RELIGIOUS ORGS**

**GALLERIES**

**RED BIKE  
BIKE SHARE**