

*Class A Office Space  
For Lease*



875 East

*wisconsin ave.*

Milwaukee, Wisconsin

*Located in Milwaukee's CBD, 875 East is a premier 8-story building overlooking the Milwaukee Art Museum and Lake Michigan.*



**JLL**

*Achieve  
Ambitions*

**Nick Hepner**  
Associate Broker

direct + 1 414 944 2107  
mobile +1 608 444 1675  
[nick.hepner@am.jll.com](mailto:nick.hepner@am.jll.com)

**Michael Streit**  
Vice President

direct + 1 414 944 2104  
mobile +1 414 795 9592  
[michael.streit@am.jll.com](mailto:michael.streit@am.jll.com)





## Building Specifications:

<b>Total Building S.F.:</b>	210,074 s.f.
<b>Available S.F.:</b>	13,000 - 40,000 s.f.
<b>Built:</b>	2003
<b>Floors:</b>	8
<b>Floor plate:</b>	28,116 s.f.
<b>Parking Ratio:</b>	2.00 / 1,000 s.f. *
<b>Lease Rate:</b>	\$22.00 NNN
<b>Op.Ex. (2019 Estimate):</b>	\$18.18 / s.f.

*Tenant improvement allowance available.*

**\*Parking is available in the attached parking structure at 875 E. Wisconsin. Additional parking is also available adjacent to 875, in the O'Donnell Park Structure.**



## Amenities:



Heated Indoor Parking



Loading Dock Access



Shared Cafeteria



24/7 Security



Interstate Access



Patio

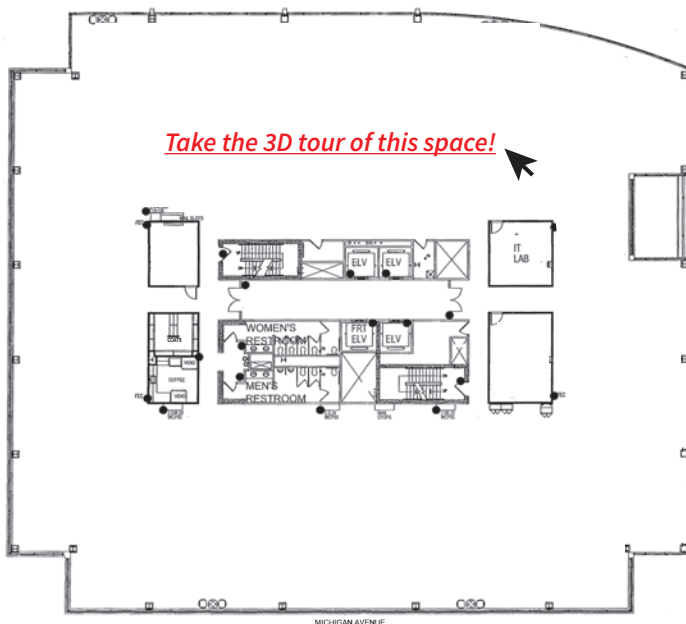


Connected to US Bank Center Skywalk



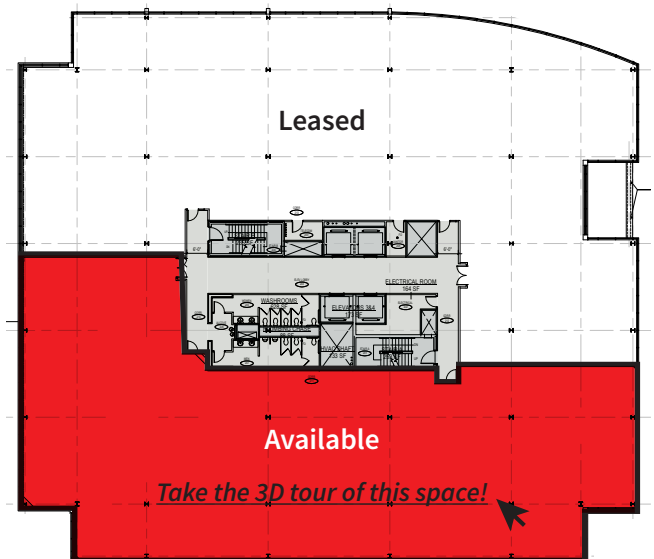
Dual Power

## Entire 2nd Floor | 27,568 s.f.



## 5th Floor | 13,410 s.f.

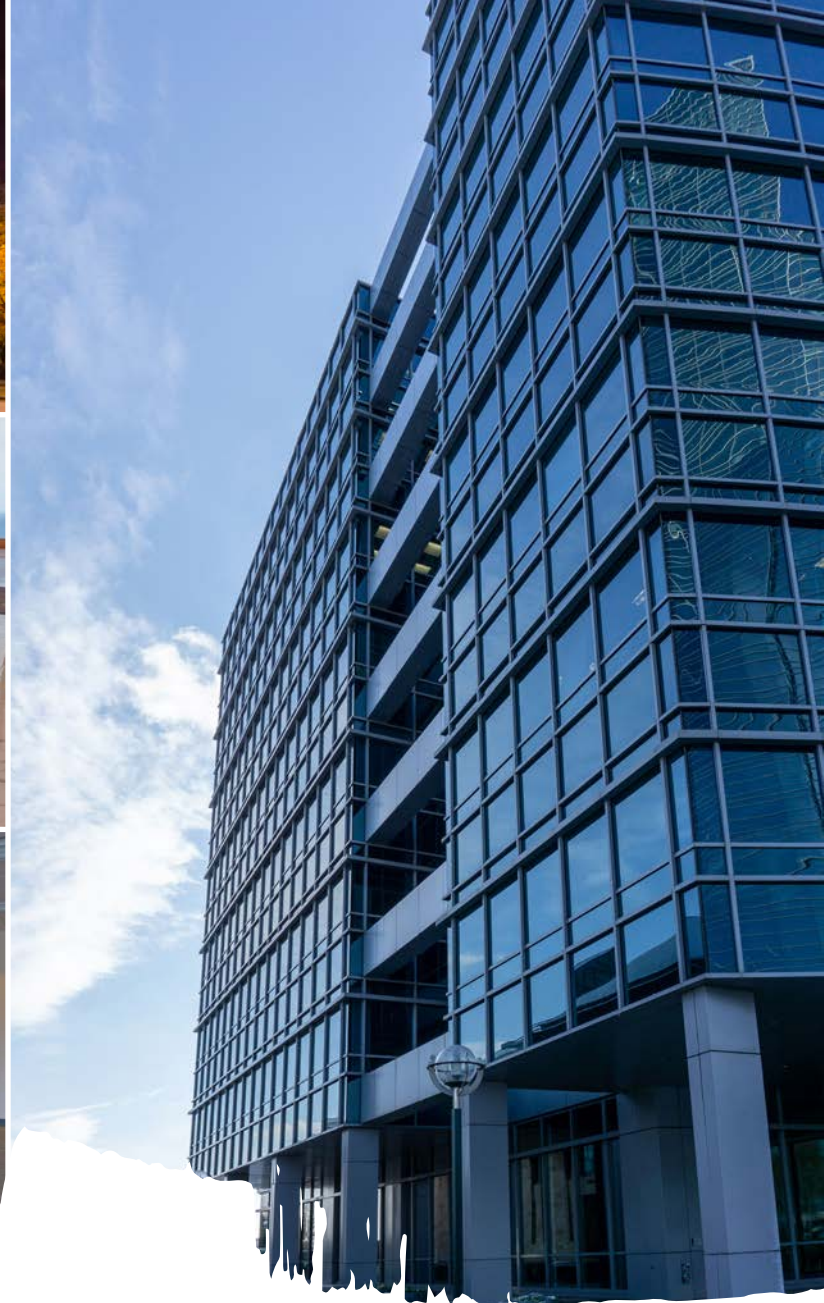
Divisible to 2,000 s.f.



### DISCLAIMER

disclaimer: Although information has been obtained from sources deemed reliable, Owner, Jones Lang LaSalle, and/or their representatives, brokers or agents make no guarantees as to the accuracy of the information contained herein, and offer the Property without express or implied warranties of any kind. The Property may be withdrawn without notice. If the recipient of this information has signed a confidentiality agreement regarding this matter, this information is subject to the terms of that agreement. ©2019. Jones Lang LaSalle. All rights reserved.





Office Space With Lakefront Views

*for lease*  
in Premier Class A Building

**875 East**  
Wisconsin Ave., Milwaukee



**Nick Hepner**  
Associate Broker  
direct + 1 414 944 2107  
mobile +1 608 444 1675  
[nick.hepner@am.jll.com](mailto:nick.hepner@am.jll.com)

**Michael Streit**  
Vice President  
direct + 1 414 944 2104  
mobile +1 414 795 9592  
[michael.streit@am.jll.com](mailto:michael.streit@am.jll.com)