

NEW SMILES BUILDING - LEASING OPPORTUNITY

15405 53rd Ave S, Tukwila, WA 98188



Peter Dinh
206.240.3833
pdinh@kalebgroup.com

Christina Chong
206.551.5909
cchong@kalebgroup.com



This information supplied herein is from sources we deem reliable. It is provided without any representation, warranty or guarantee, expressed or implied as to its accuracy. Prospective Buyer or Tenant should conduct an independent investigation and verification of all matters deemed to be material, including, but not limited to, statements of income and expenses. Consult your attorney, accountant, or other professional advisor.

Kaleb Real Estate Group is proud to present approximately 4908 SF of Office/Medical/Professional space for lease in the New Smiles Building in Tukwila, WA, with abundant parking. Excellent location with immediate access to I-5, I-405, Seatac Airport, and nearby Westfield Shopping Center. Strategically located right off the I-5 off-ramp for easy access and visibility from major highways provide for high traffic counts. Minutes to the new light rail and Sea-Tac airport. Great demographics surrounds this location. Short distance drive for residents of Seattle, Burien, Tukwila, Renton, Federal Way, and Kent.



LEASING DETAILS

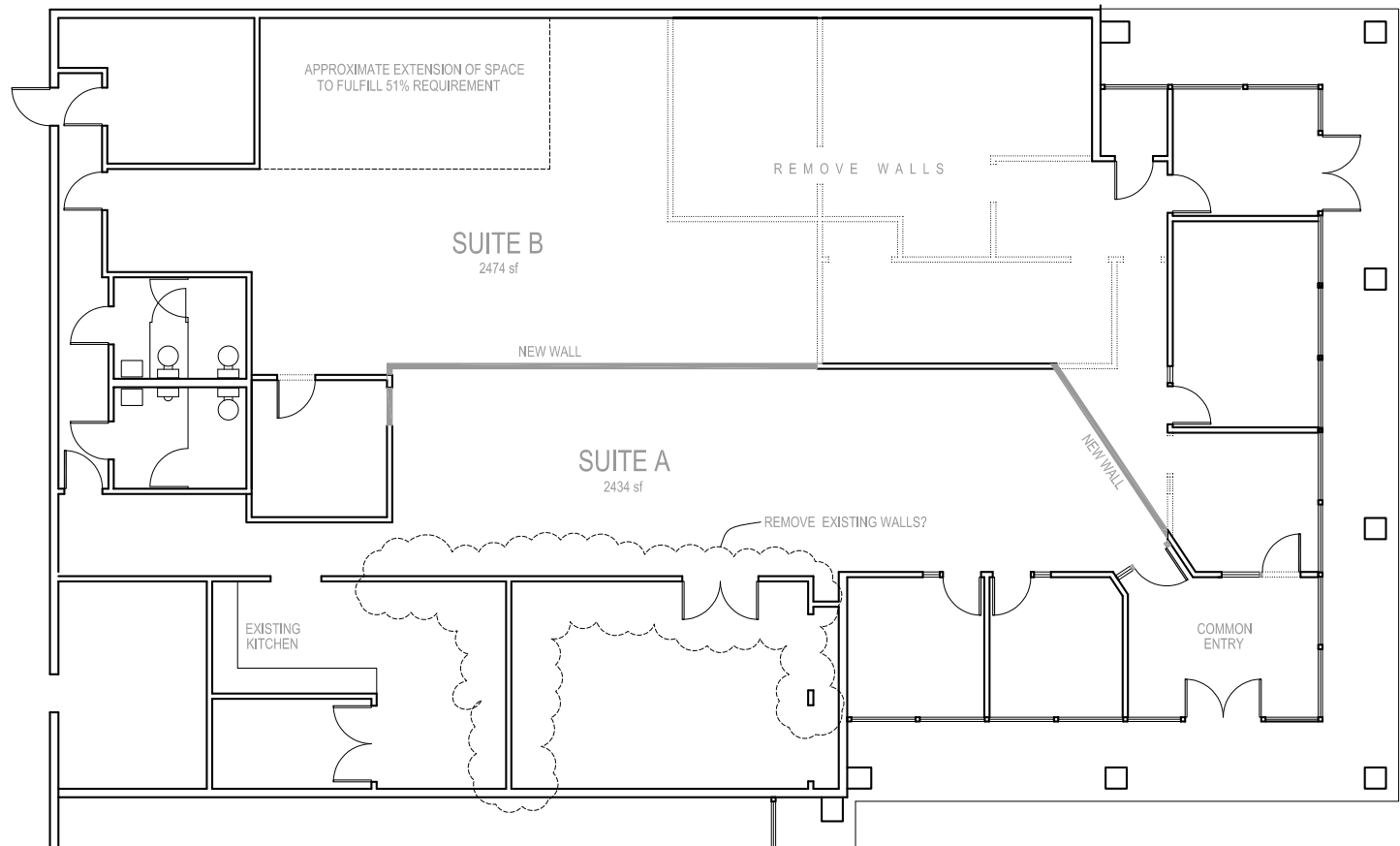
Offered at
\$10-\$11 PSF + NNN

NNN \$7-\$8 PSF (TBD)

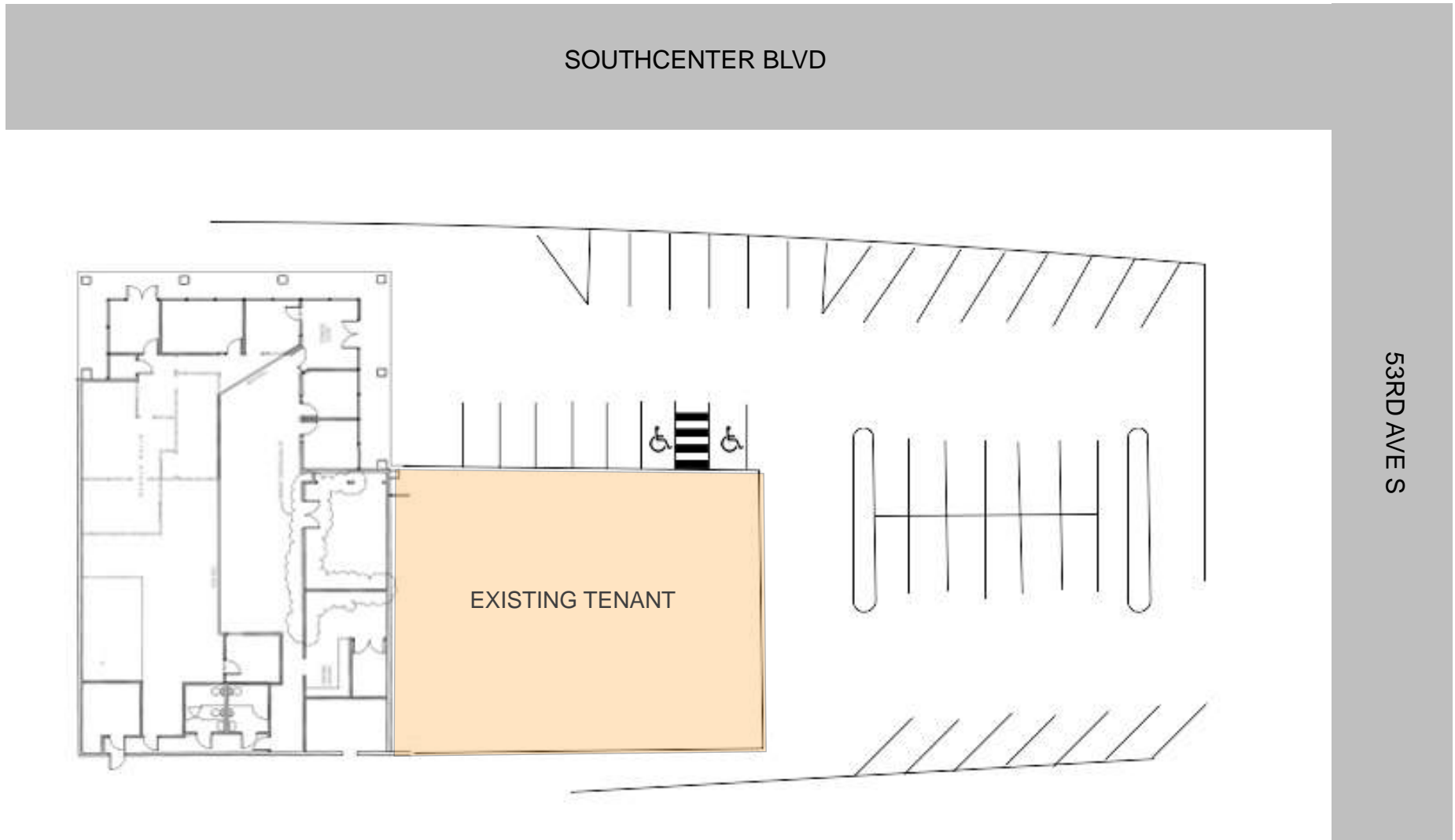
4,908 SF Total Available
Divisible to 2,434 SF
Divisible to 2,474 SF

Available March 2017

Medical / Office / Professional



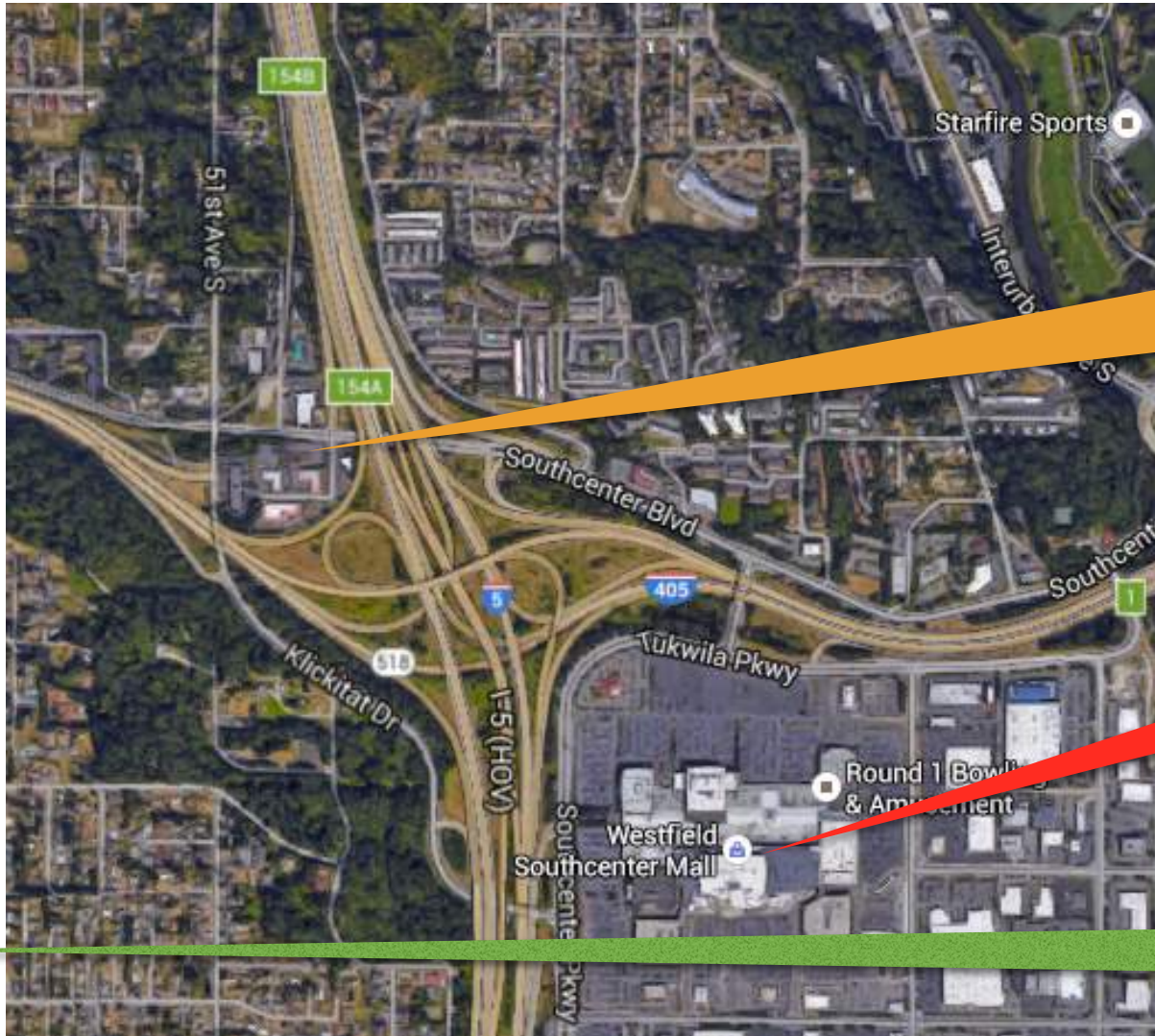
TOTAL BUILDING SF PER K.C. RECORDS = 10018
49% = 4908.8/2 = 2454SF



AVAILABLE SPACE PHOTOS







Port of Seattle®
Seattle-Tacoma International Airport

For more detailed information, please contact one of our helpful Listing Brokers:

KALEB Real Estate Group
WWW.KALEBGROUP.COM

Peter Dinh
206.240.3833
pdinh@kalebgroup.com

Christina Chong
206.551.5909
cchong@kalebgroup.com

Kaleb Real Estate Group
Tel: 425.643.8557
Fax: 425.746.0855
info@kalebgroup.com

