



## 101 MONTGOMERY

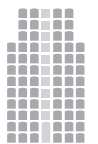
Built, owned & operated by the Cahill family,  
shaping San Francisco since 1911.





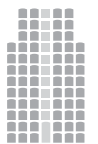
## About 101

Built in 1984 by Cahill Contractors, 101 Montgomery is a **Class A, 294,146 SF** building located in the heart of San Francisco's financial district. The building features stunning Bay views on the top floors and is ideally located **across the street** from Montgomery BART/Muni Station. On-site amenities include Coffee Bar, La Fromagerie, Juice Shop, Golden West (AU), and Cafe Ambrosia, with hundreds of other amenities just a short walk away. The building is Certified LEED Gold and Energy Star Rated.





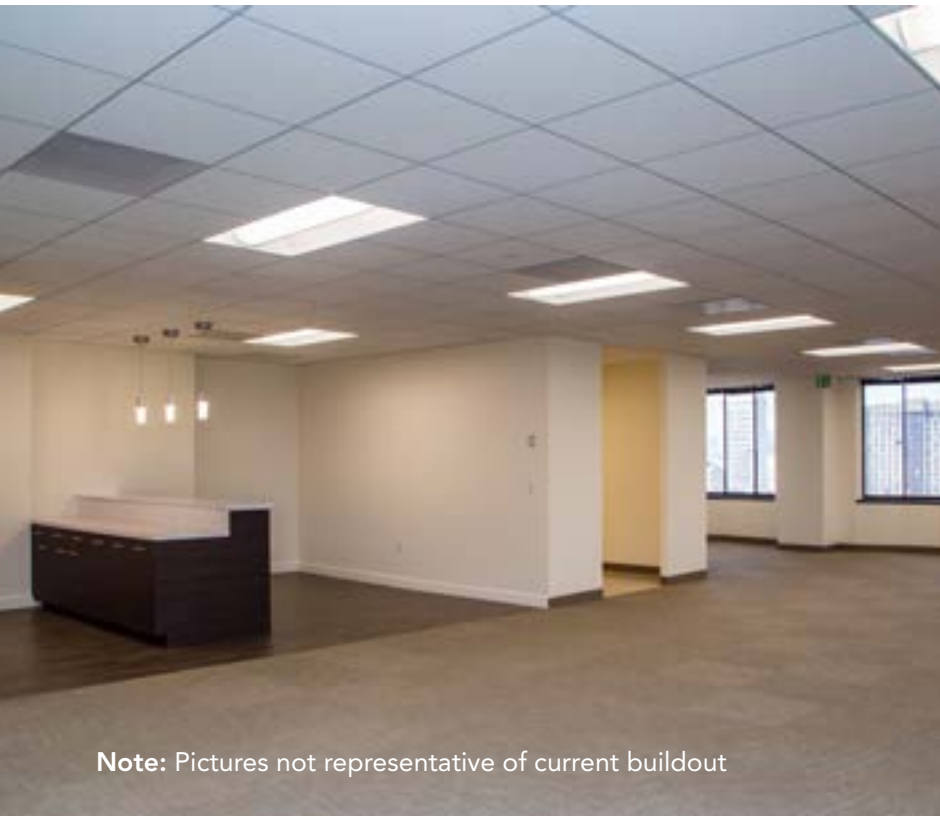
## Amenities in a 3 block radius include...



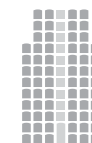


## SUITE 300: 6,555 RSF

- Available now
- 6 Private offices
- One conference room
- Double door identity
- Reception
- One boardroom
- Kitchen/break room
- Copy/Production area

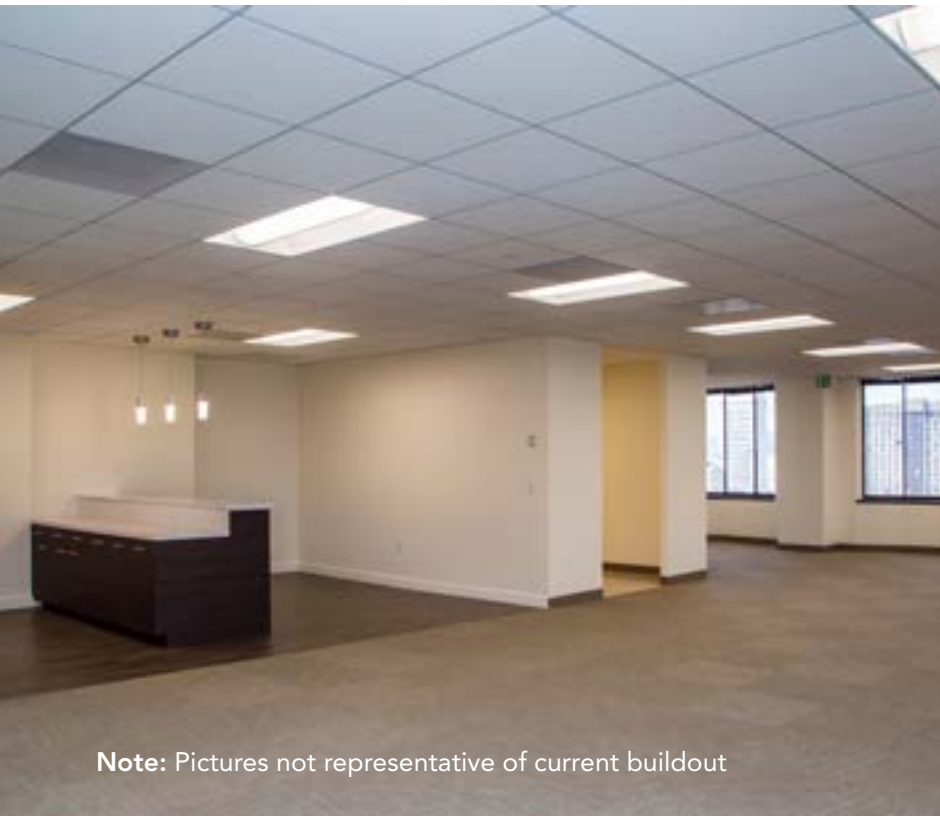


Note: Pictures not representative of current buildout

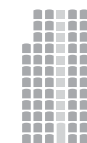


## SUITE 350: 5,533 RSF

- Available now
- 5 Private offices
- One conference room
- Reception
- 33 Workstations
- Copy/Production area
- Phone room

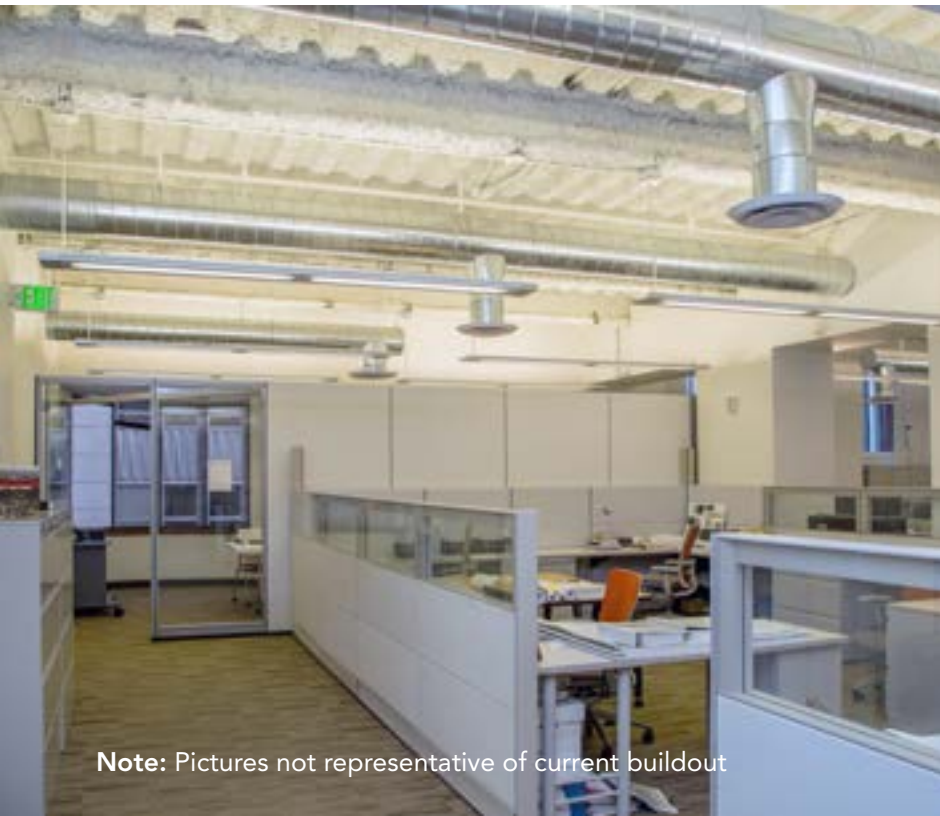
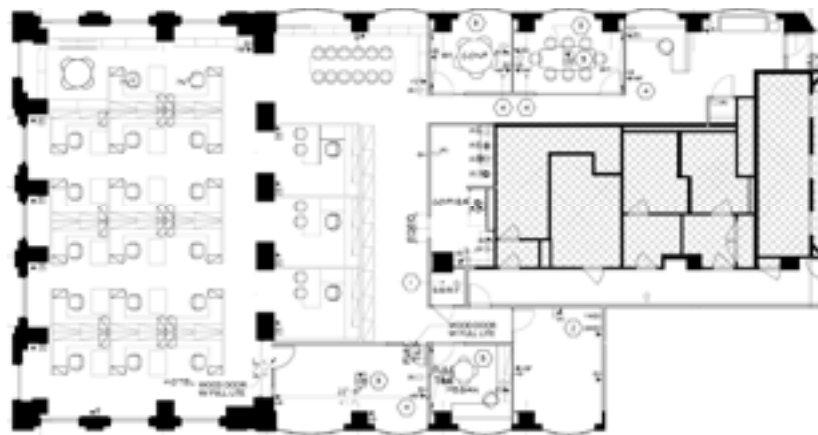


Note: Pictures not representative of current buildout

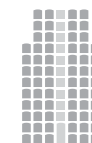


## SUITE 500: 6,121 RSF

- Available now
- Large open space
- Copy room
- Kitchen
- High exposed ceilings
- Two conference rooms
- Two meeting rooms

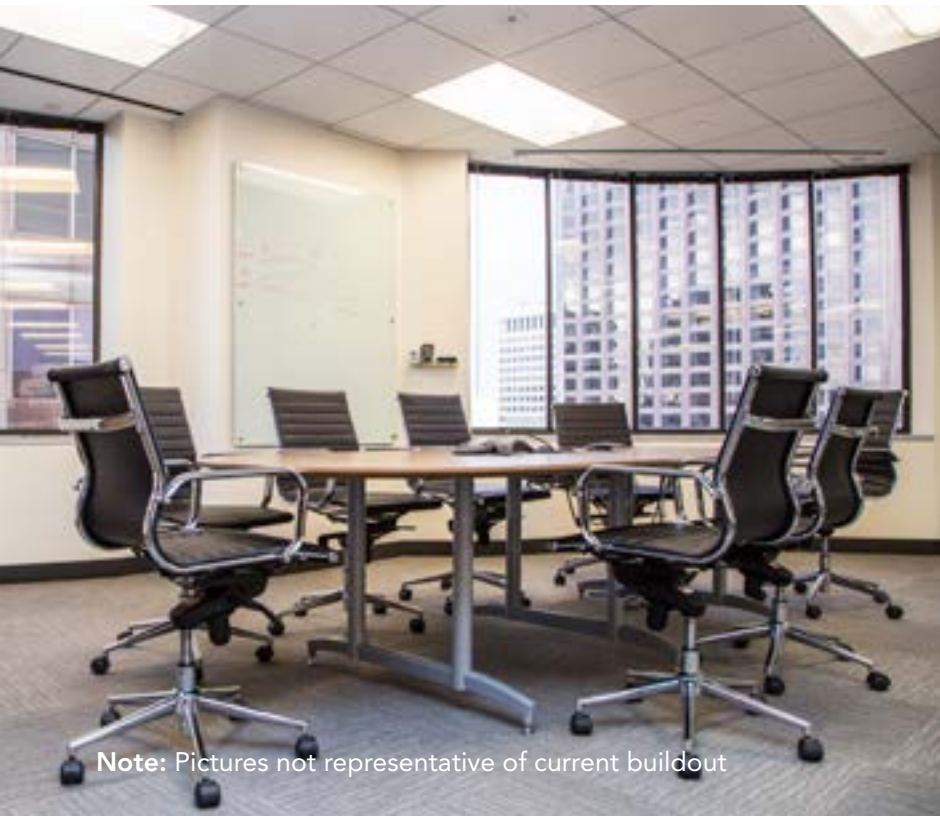


Note: Pictures not representative of current buildout



## SUITE 850: 2,507 RSF

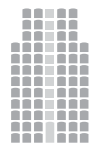
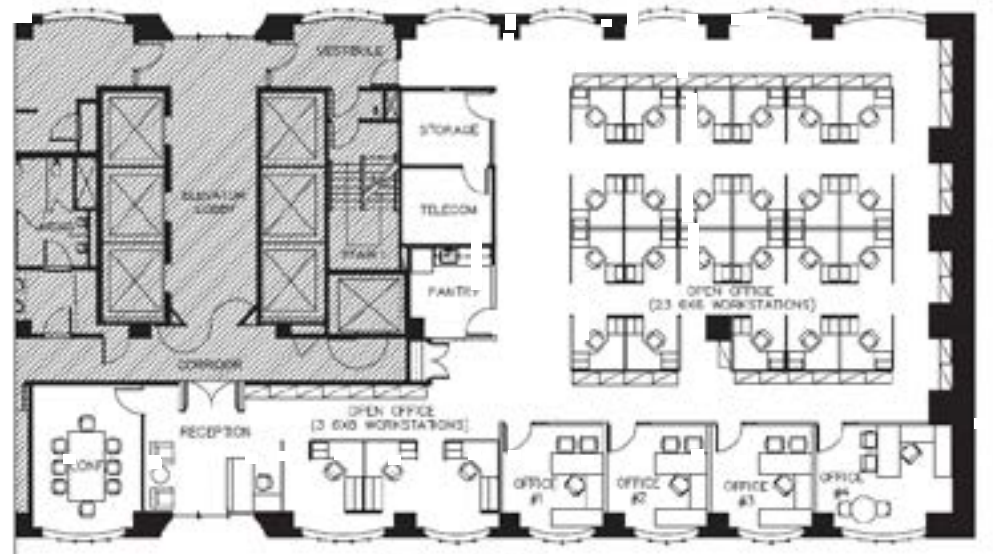
- Available now
- 5 private offices
- One conference room
- Open office area
- Break area
- Reception





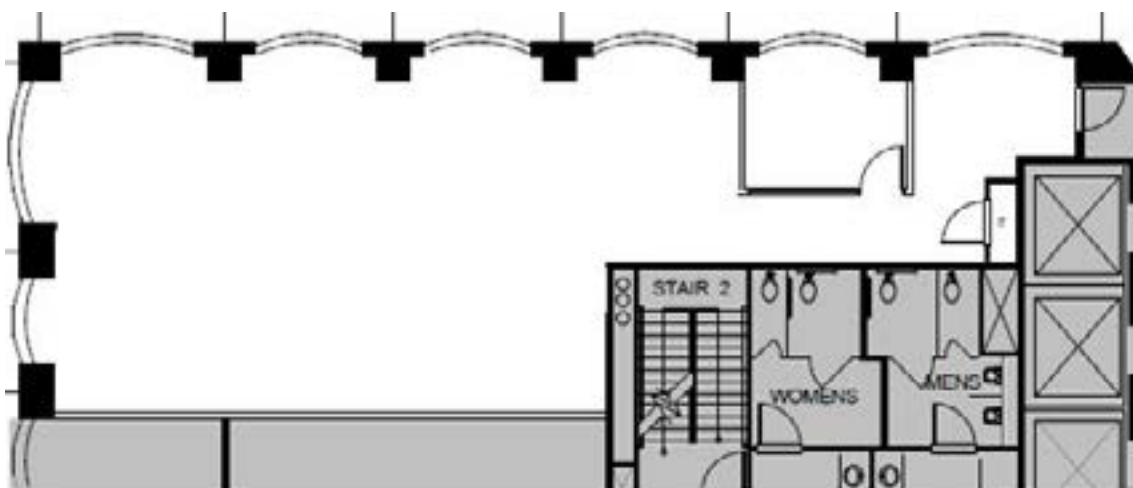
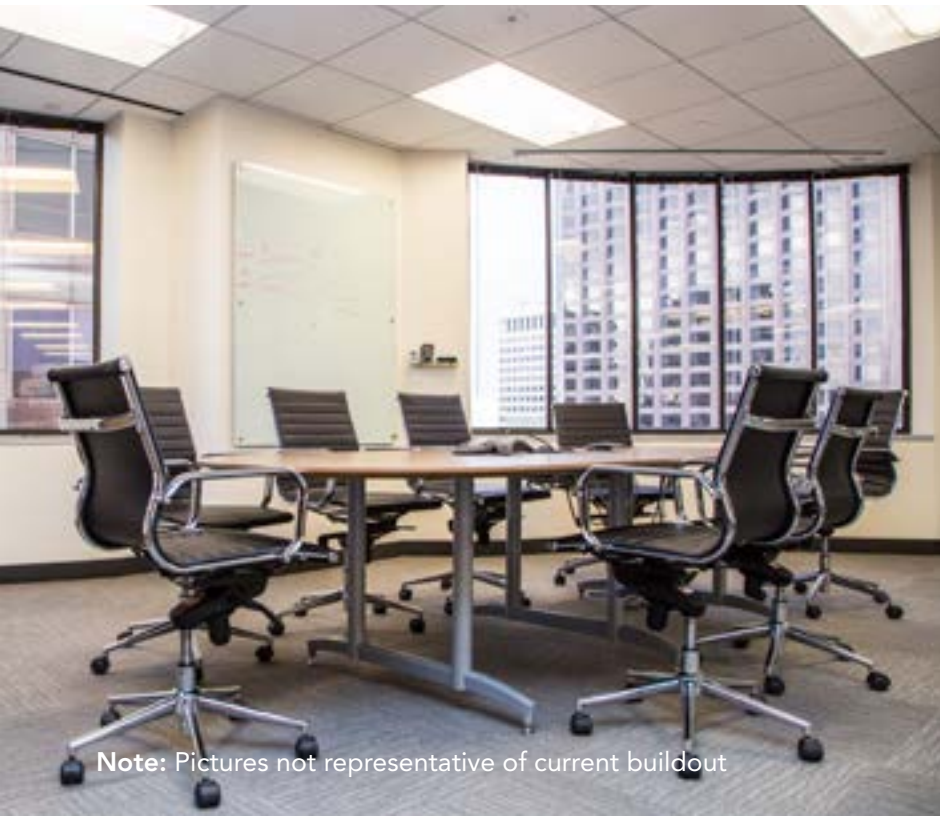
## SUITE 1200: 5,828 RSF

- Available 7/1/2021 (possibly sooner)
- 4 private offices
- Open area for workstations
- One conference room
- Reception
- Pantry



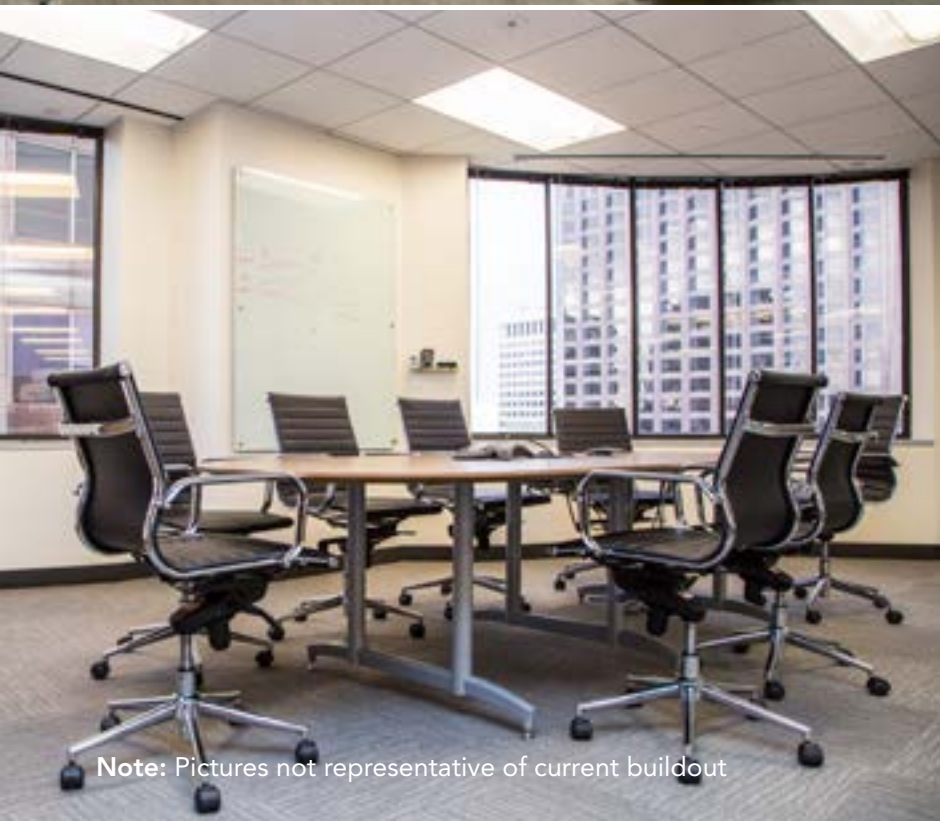
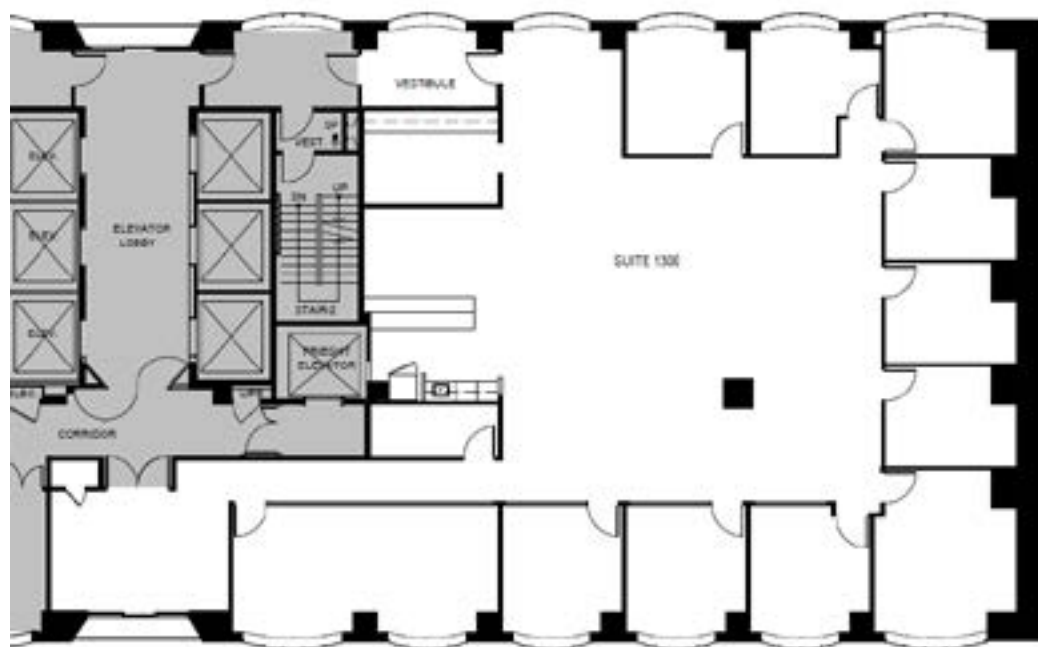
## SUITE 1250: 2,163 RSF

- Available now
- Open layout

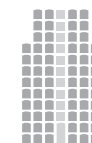


## SUITE 1300: 5,553 RSF

- Available now
- 10 private offices
- One conference room
- Open area
- Kitchen
- Reception

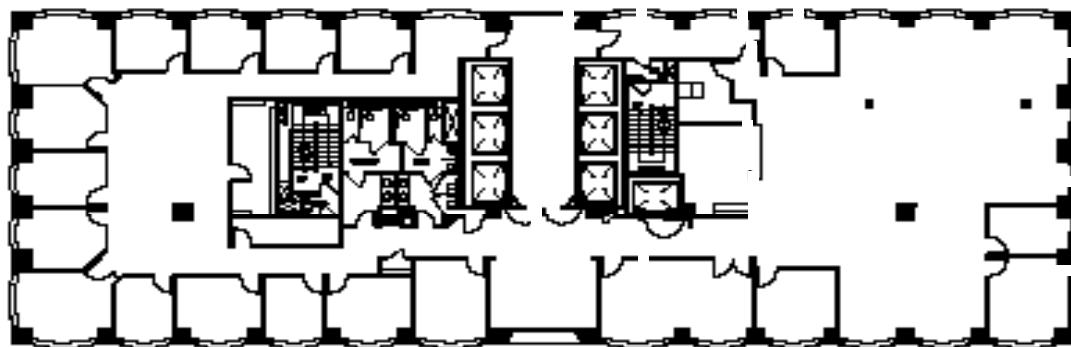


Note: Pictures not representative of current buildout



## SUITE 1500:10,275 RSF

- Available now
- 15 private offices
- Open area for workstations
- One copy/breakroom
- Reception



Note: Pictures not representative of current buildout

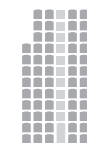


## SUITE 2650: 4,996 RSF

- Available now
- 11 Private offices
- Conference room
- Reception
- Copy/Production area
- 7 Workstations
- Break area



Note: Pictures not representative of current buildout





## 101 MONTGOMERY

Built, owned & operated by the Cahill family,  
shaping San Francisco since 1911.

### For leasing inquiries:

Matt Shewey  
+ 1 415 395 7255  
Matt.Shewey@am.jll.com  
RE License #01445125

Tom Doupe  
+1 415 395 4933  
Tom.Doupe@am.jll.com  
RE License #01921218



© 2020 Jones Lang LaSalle IP, Inc. All rights reserved. The information contained in this document is proprietary to Jones Lang LaSalle and shall be used solely for the purposes of evaluating this proposal. All such documentation and information remains the property of Jones Lang LaSalle and shall be kept confidential. Reproduction of any part of this document is authorized only to the extent necessary for its evaluation. It is not to be shown to any third party without the prior written authorization of Jones Lang LaSalle. All information contained herein is from sources deemed reliable; however, no representation or warranty is made as to the accuracy thereof.