



1301 SHOREWAY

FOR LEASE

1301 SHOREWAY ROAD. BELMONT. CA

Available Suites

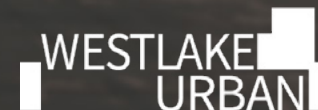
SUITES RANGING FROM ± 531 TO $\pm 20,062$ SF



Dan Matteucci
650.358.5276
dmatteucci@ngkf.com
CA RE License #01848064

John Kraft
650.358.5277
jkraft@ngkf.com
CA RE License # 01787698

Sarah Bohannon
650.358.5268
sbohannon@ngkf.com
CA RE License #01940402



AVAILABLE SUITE



VARIOUS SUITES AVAILABLE

ranging from
 ± 531 to $\pm 20,062$ sf

SUITE 170: ± 531 sf

SUITE 175: $\pm 3,092$ sf

SUITE 185: $\pm 1,027$ sf

SUITE 195: ± 727 sf

SUITE 325: $\pm 1,850$ sf

SUITE 400: $\pm 20,062$ sf





HIGH-QUALITY

finished office suites



FITNESS CENTER

with showers & lockers



REMODELED

lobby & common area
destination dispatch elevator system
HVAC upgrades



ON-SITE

café
common area conference room



OUTDOOR COLLABORATION

bbq & basketball area
dedicated outdoor patio/balcony space

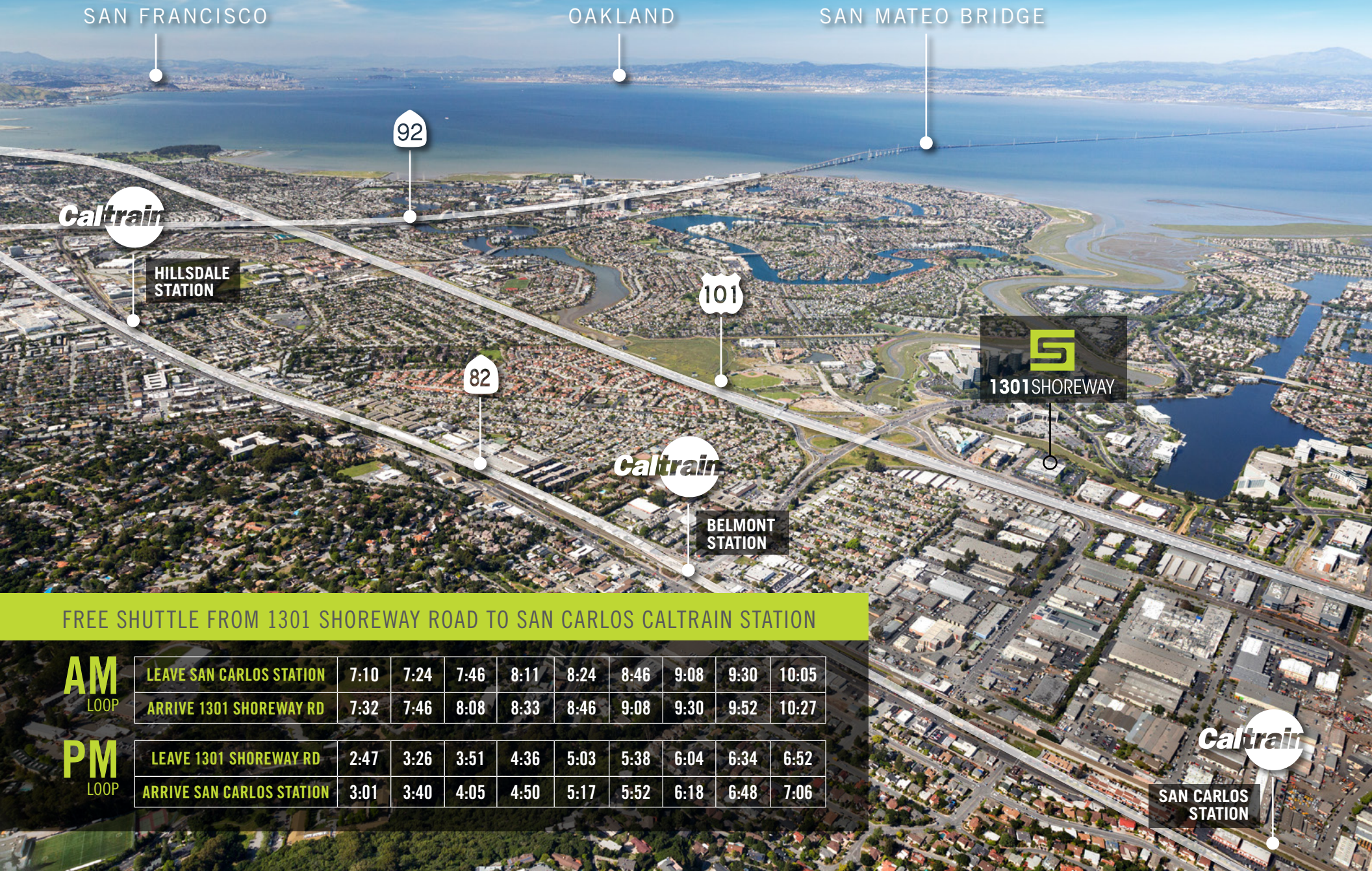


CHARGING STATIONS

for electric vehicles

LOCAL TRANSPORTATION

Shuttle access to the San Carlos Caltrain Station with
DIRECT PICK-UP / DROP-OFF
 at 1301 Shoreway Road



FREE SHUTTLE FROM 1301 SHOREWAY ROAD TO SAN CARLOS CALTRAIN STATION

AM
LOOP

LEAVE SAN CARLOS STATION	7:10	7:24	7:46	8:11	8:24	8:46	9:08	9:30	10:05
ARRIVE 1301 SHOREWAY RD	7:32	7:46	8:08	8:33	8:46	9:08	9:30	9:52	10:27

PM
LOOP

LEAVE 1301 SHOREWAY RD	2:47	3:26	3:51	4:36	5:03	5:38	6:04	6:34	6:52
ARRIVE SAN CARLOS STATION	3:01	3:40	4:05	4:50	5:17	5:52	6:18	6:48	7:06

Caltrain

SAN CARLOS
STATION

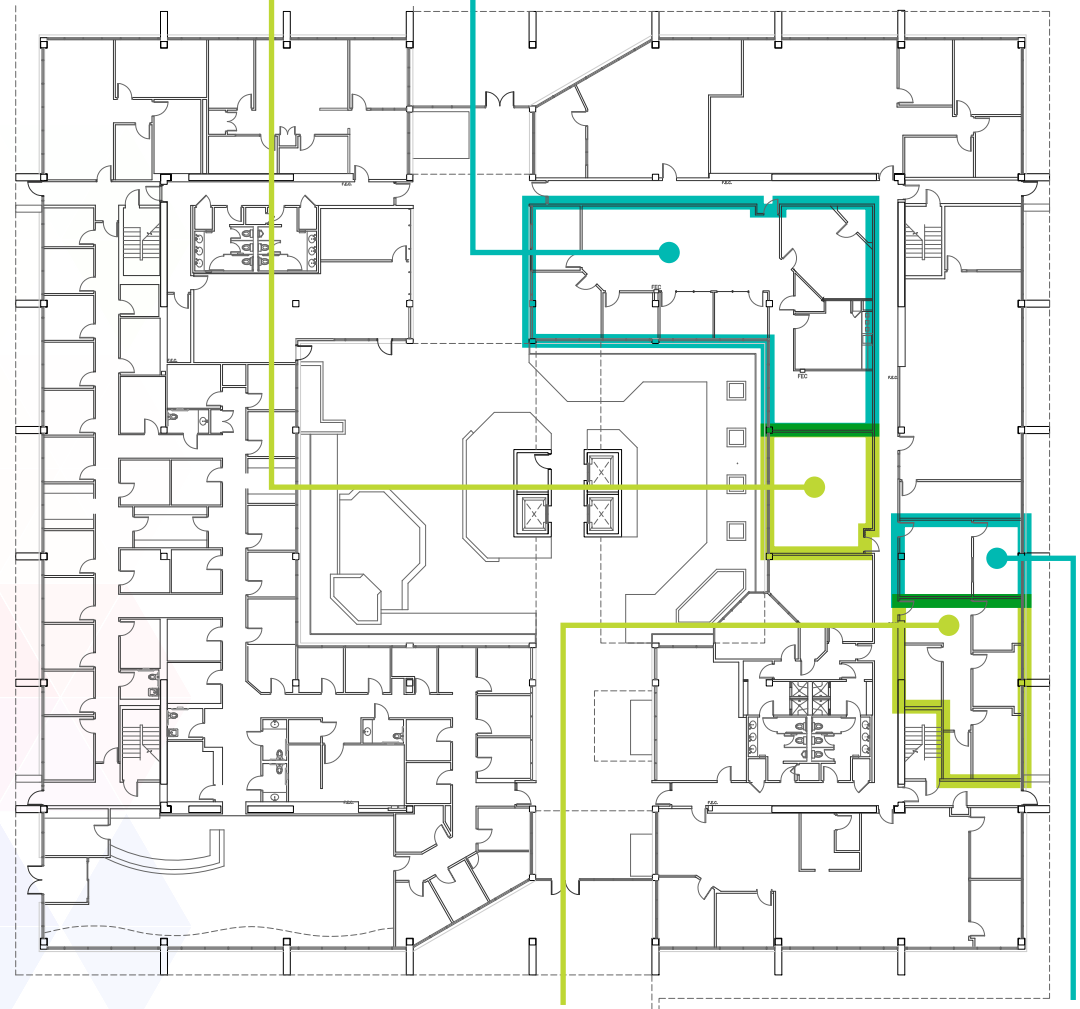


FLOOR PLANS

Existing 1st Level Floor Plan

Suite 195
±727 sf

Suite 175
±3,092 sf



Suite 185
±1,027 sf

Suite 170
±531 sf
10/1/20

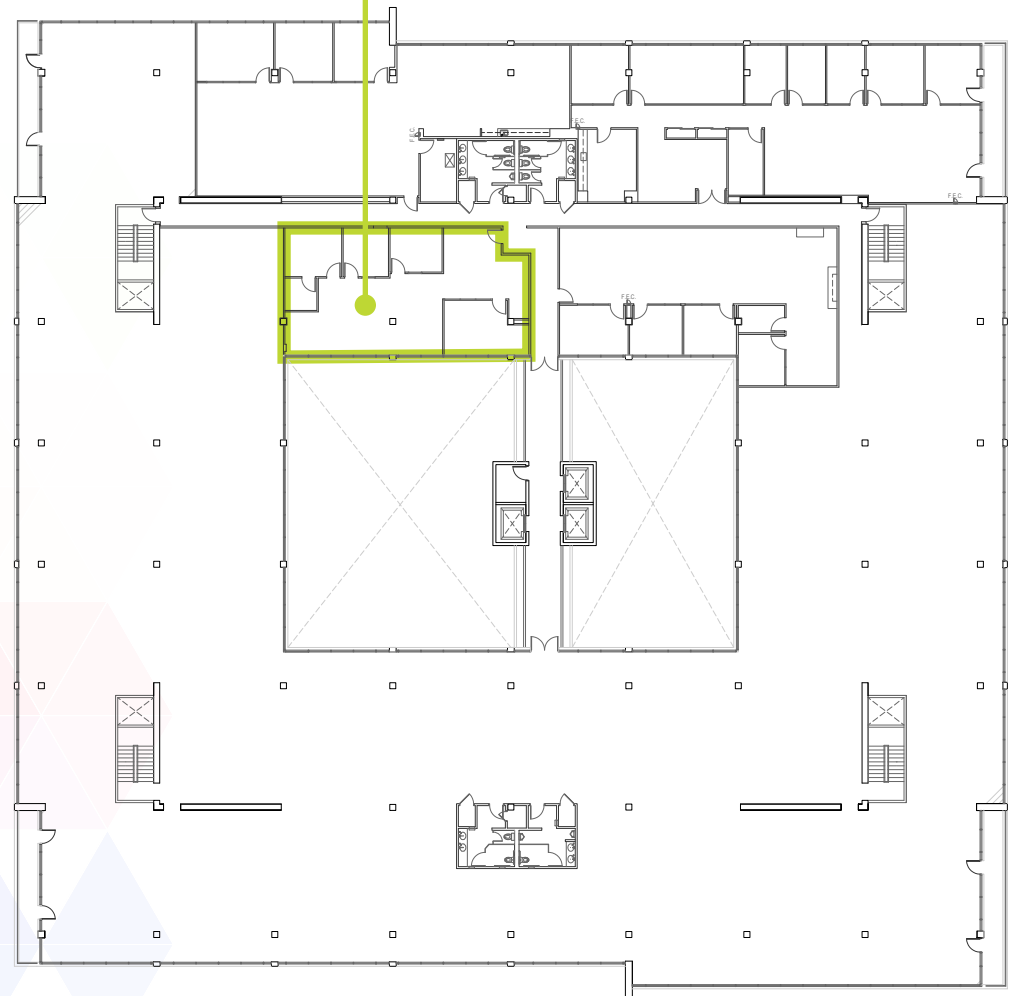
1301 SHOREWAY ROAD, BELMONT, CA



FLOOR PLANS

Suite 325
±1,850 sf

Existing 3rd Level
Floor Plan

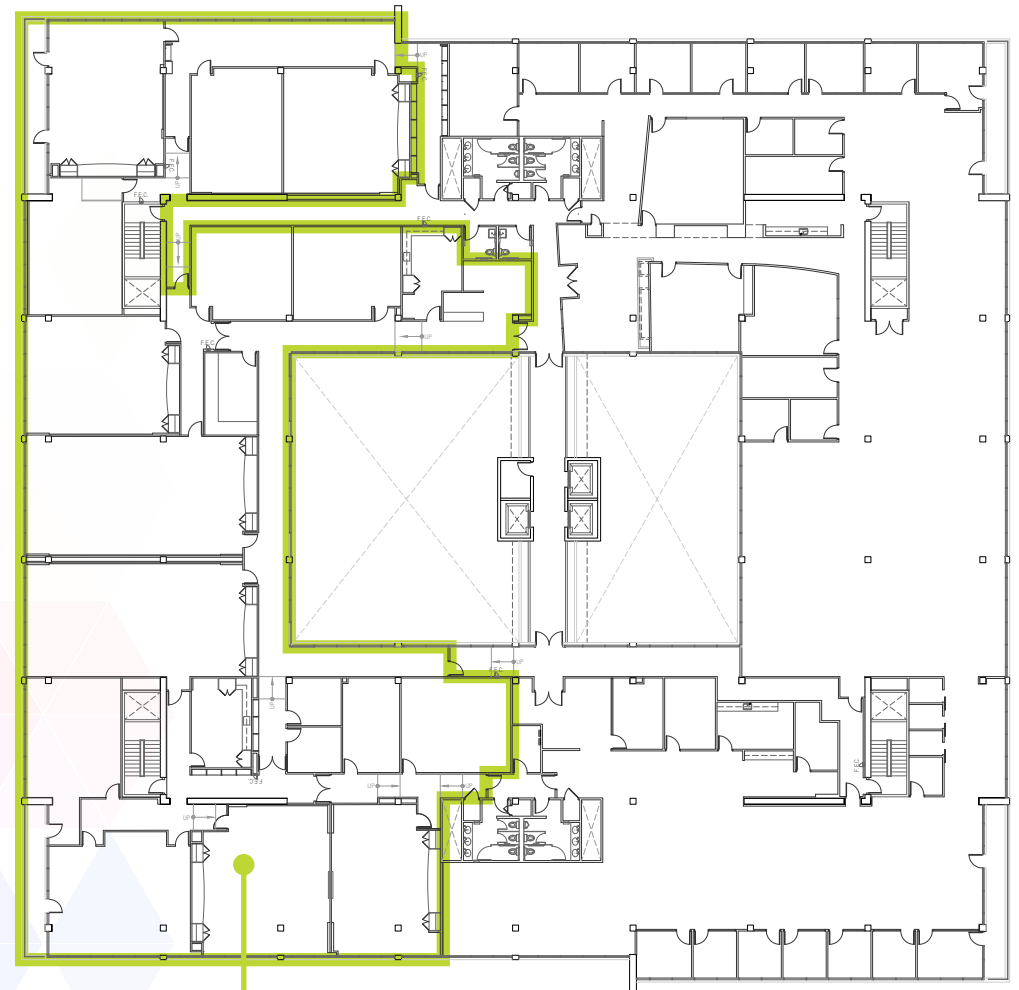


1301 SHOREWAY ROAD, BELMONT, CA



FLOOR PLANS

Existing 4th Level Floor Plan



1301 SHOREWAY ROAD. BELMONT. CA

Suite 400
±20,062 sf
1/1/21



1301 SHOREWAY

FOR LEASE

1301 SHOREWAY ROAD, BELMONT, CA



Dan Matteucci

650.358.5276

dmatteucci@ngkf.com

CA RE License #01848064

John Kraft

650.358.5277

jkraft@ngkf.com

CA RE License # 01787698

Sarah Bohannon

650.358.5268

sbohannon@ngkf.com

CA RE License #01940402

2950 SOUTH DELAWARE STREET, SUITE 125
SAN MATEO, CA 94403



The distributor of this communication is performing acts for which a real estate license is required. The information contained herein has been obtained from sources deemed reliable but has not been verified and no guarantee, warranty or representation, either express or implied, is made with respect to such information. Terms of sale or lease and availability are subject to change or withdrawal without notice.

18-0509.08/20