

AVAILABLE FOR  
**SUBLEASE**

Fully Improved Salon Suites



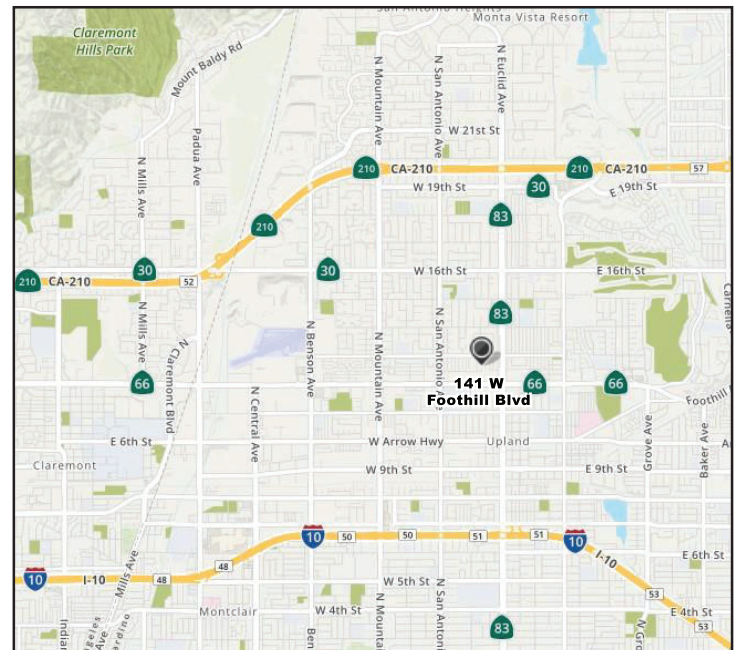
**141 W. Foothill Blvd.  
Upland, CA 91786**

**PROPERTY HIGHLIGHTS:**

- Highly Upgraded Suites Consisting of  $\pm 6,440$  RSF
- Thirty (30) Separate Suites of Varying Sizes
- Great Visibility and Exposure to Foothill Boulevard
- Master Lease Expires on 12/31/2024

**LOCATION:**

- Located at the Signalized Intersection of Foothill Boulevard (Route 66) and Euclid Avenue
- Surrounding Tenants Include: Vons Pavillion, Chase Bank, Cold Stone Creamery, Jamba Juice, and More
- Average Daily Car Count of  $\pm 62,000$



For More Information or to Tour, Please Contact:

**Carol Plowman**

(909) 373.2905 | cplowman@lee-assoc.com | BRE ID # 00849369

**Danielle Parker**

(909) 373.2906 | dparker@lee-assoc.com | BRE ID # 01927503

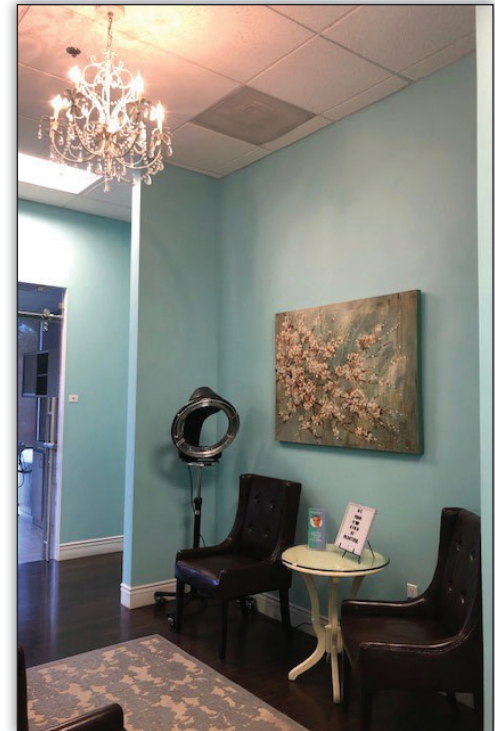
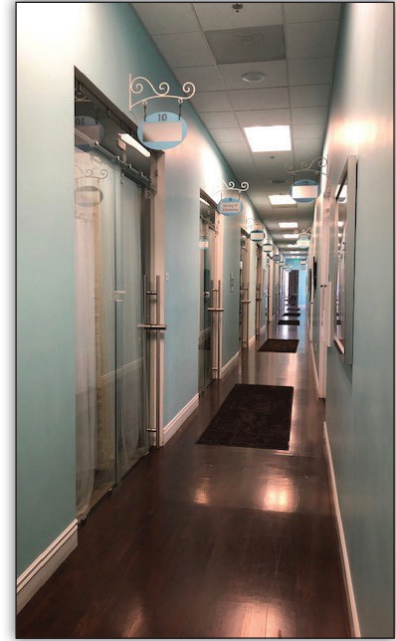


All information furnished regarding property for sale, rental or financing is from sources deemed reliable, but no warranty or representation is made to the accuracy thereof and same is submitted to errors, omissions, change of price, rental or other conditions prior to sale, lease or financing or withdrawal without notice. No liability of any kind is to be imposed on the broker herein.

Lee & Associates—Ontario  
3535 Inland Empire Blvd • Ontario, CA 91764  
Corporate ID #00976995 • www.lee-assoc.com

AVAILABLE FOR  
**SUBLEASE**

141 W. Foothill Boulevard  
Upland, CA 91786



**\*NOTE: Most Suites Have  
Plumbing**

**\*\*PLEASE DO NOT DISTURB  
THE EXISTING TENANTS\*\***

For More Information or to Tour, Please Contact:

**Carol Plowman**

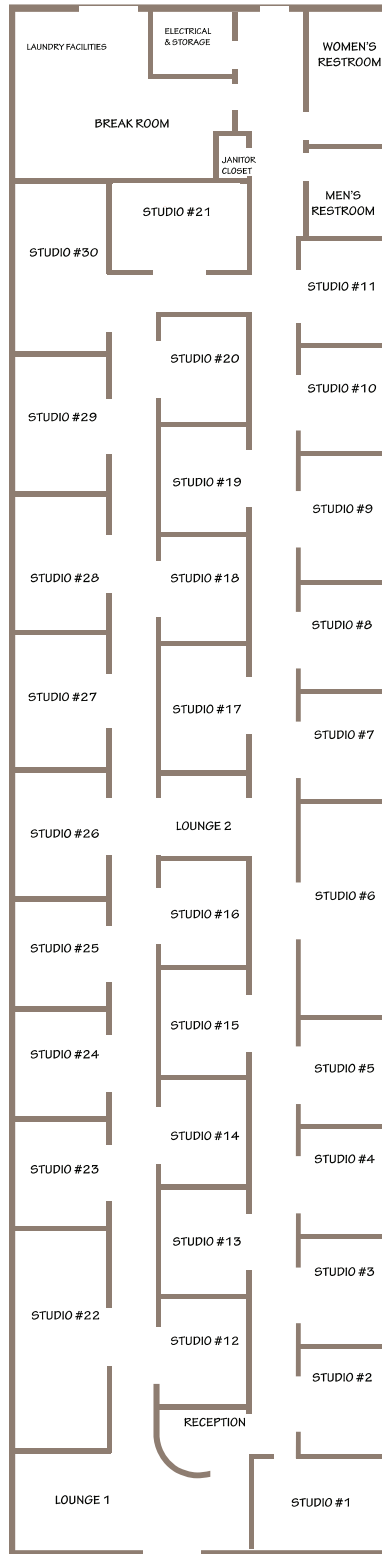
(909) 373.2905 | cplowman@lee-assoc.com | BRE ID # 00849369

**Danielle Parker**

(909) 373.2906 | dparker@lee-assoc.com | BRE ID # 01927503

AVAILABLE FOR  
**SUBLEASE**

141 W. Foothill Boulevard  
Upland, CA 91786



For More Information or to Tour, Please Contact:

**Carol Plowman**

(909) 373.2905 | [cplowman@lee-assoc.com](mailto:cplowman@lee-assoc.com) | BRE ID # 00849369

**Danielle Parker**

(909) 373.2906 | [dparker@lee-assoc.com](mailto:dparker@lee-assoc.com) | BRE ID # 01927503