

# Pollack Business Park North

Great Chandler Location, Flex Industrial

3205, 3215, 3245, 3225, 3235 N. Arizona Ave., Chandler, AZ 85225 | NEC Elliot & Arizona Ave.



**Call 480-888-0888 For Details!**  
Or Email Us At [leasing@pollackinvestments.com](mailto:leasing@pollackinvestments.com)

## Property Information

**Total Building(s) Size**  
102,450 SF

**Minimum Suite**  
1,093 SF

**Largest Suite**  
5,551 SF

**Approximate Parking Spaces**  
373

**Population (5-mile radius)**  
406,547

**Projected Population 2023 (5-mile radius)**  
443,454

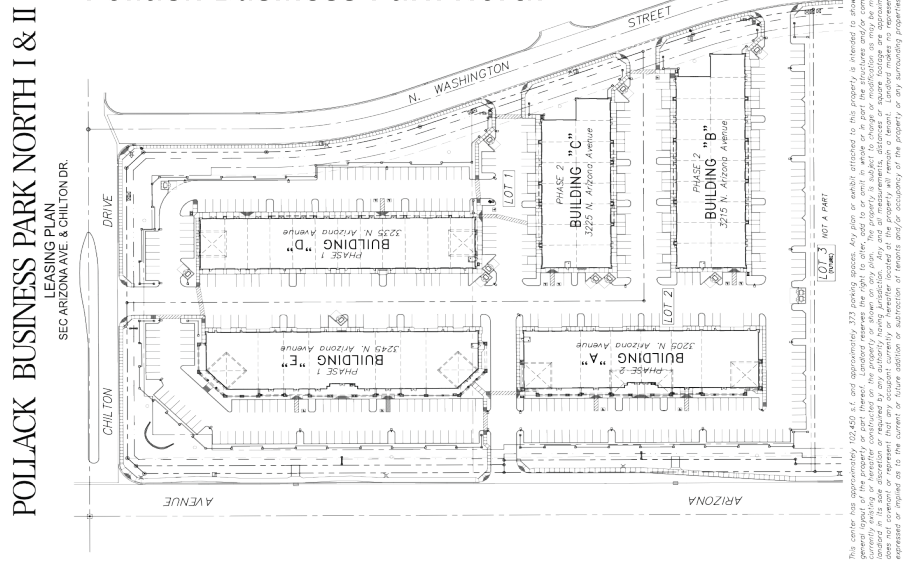
**Est. Average HH Income (5-mile radius)**  
\$82,945

**Arizona Ave (SR 88) Traffic**  
35,700

**Elliot Road Traffic**  
30,900

**Corner Total**  
66,600 per day

## Pollack Business Park North



This center has approximately 102,450 S.F. total approximately 373 parking spaces. Any plans or exhibits referenced to this property is intended to show only the general layout of the property or site. Landlord reserves the right to alter, add to or omit in whole or in part the structures and/or common areas located on the property or site. All measurements, distances, or square footages are approximate. Landlord makes no representation, either express or implied, as to the current or future addition or subtraction of tenants and/or occupancy of the property or any surrounding properties. 11.29.17

THE PROPERTY IS SUBJECT TO CHANGE OR MODIFICATION AS MAY BE MADE BY THE LANDLORD IN ITS SOLE DISCRETION OR REQUIRED BY AN AUTHORITY HAVING JURISDICTION, ANY AND ALL MEASUREMENTS, DISTANCES, OR SQUARE FOOTAGES ARE APPROXIMATE INCLUDING DEMOGRAPHIC INFORMATION OBTAINED FROM SOURCES SUCH AS COSTAR, SITESUSA, OR A GOVERNMENTAL AUTHORITY. LANDLORD DOES NOT COVENANT OR REPRESENT THAT AN OCCUPANT CURRENTLY OR HEREAFTER LOCATED AT THE PROPERTY WILL REMAIN A TENANT. LANDLORD MAKES NO REPRESENTATION, EITHER EXPRESS OR IMPLIED, AS TO THE CURRENT OR FUTURE ADDITION OR SUBTRACTION OF TENANTS AND/OR OCCUPANCY OF THE PROPERTY

**CALL FOR DETAILS**  
**480-888-0888**

*Michael A. Pollack*  
**REAL ESTATE INVESTMENTS**

**VISIT OUR WEBSITE**  
[pollackinvestments.com](http://pollackinvestments.com)



# Over 45 Commercial Properties

Phoenix | Chandler | Tempe | Glendale | Gilbert | Mesa | Peoria



*Michael A. Pollack*

REAL ESTATE INVESTMENTS

[www.pollackinvestments.com](http://www.pollackinvestments.com)