

**NEW
DEVELOPMENT**

VITA & VITA REALTY CORP.

County Plaza

Route 10 (Morris County)
Randolph, New Jersey

Andrew S. Vita, Jr.
Andrew@VitaRealty.com

Anthony Vita
Tony@vitarealty.com

T 973-227-5233
F 973-227-5133

**Now
Leasing
Phase 3 & 4**



Information obtained from sources deemed reliable. There is no guarantee, warranty or representation made herein and same is submitted subject to errors, omissions, change of price, rental or other conditions, prior sale, lease, financing, or withdrawal without notice.

County Plaza

Route 10 at Dover-Chester Road

Phase 1
Now Open



Phase 2
Now Open



Phase 3
Now Leasing
1,500 – 9,900 Sq. Ft.



Phase 4
Approved Bank Pad
3,680 Sq. Ft. w/ Drive-thru

County Plaza Aerial Photo (9 Acres)

VITA & VITA REALTY CORP.

Andrew S. Vita, Jr.

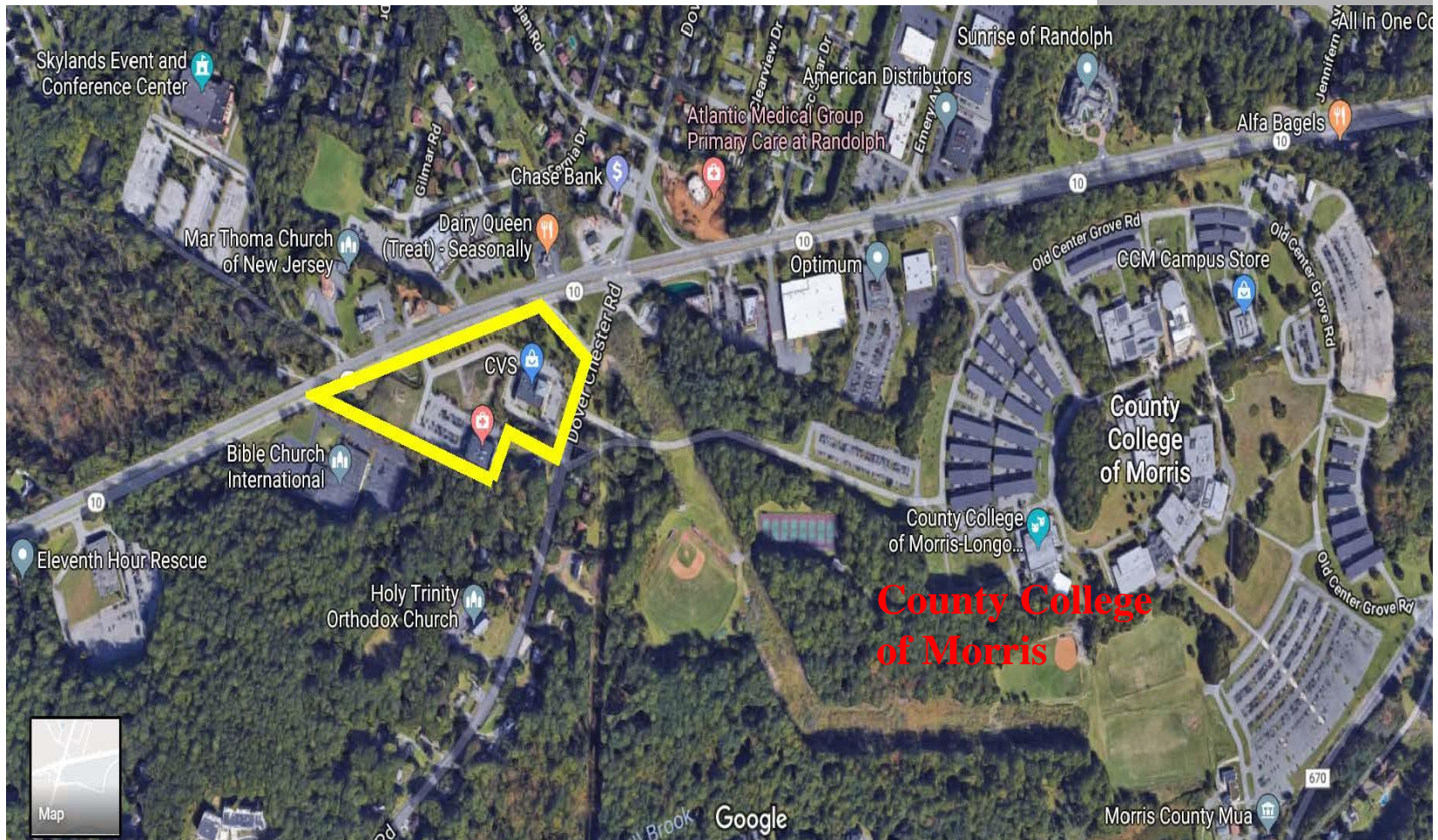
Andrew@VitaRealty.com

Anthony Vita

Tony@VitaRealty.com

T - 973-227-5233

F - 973-227-5133



County Plaza

Site Plan – GLA 51,793 Sq. Ft.

VITA & VITA REALTY CORP.

Andrew S. Vita, Jr.

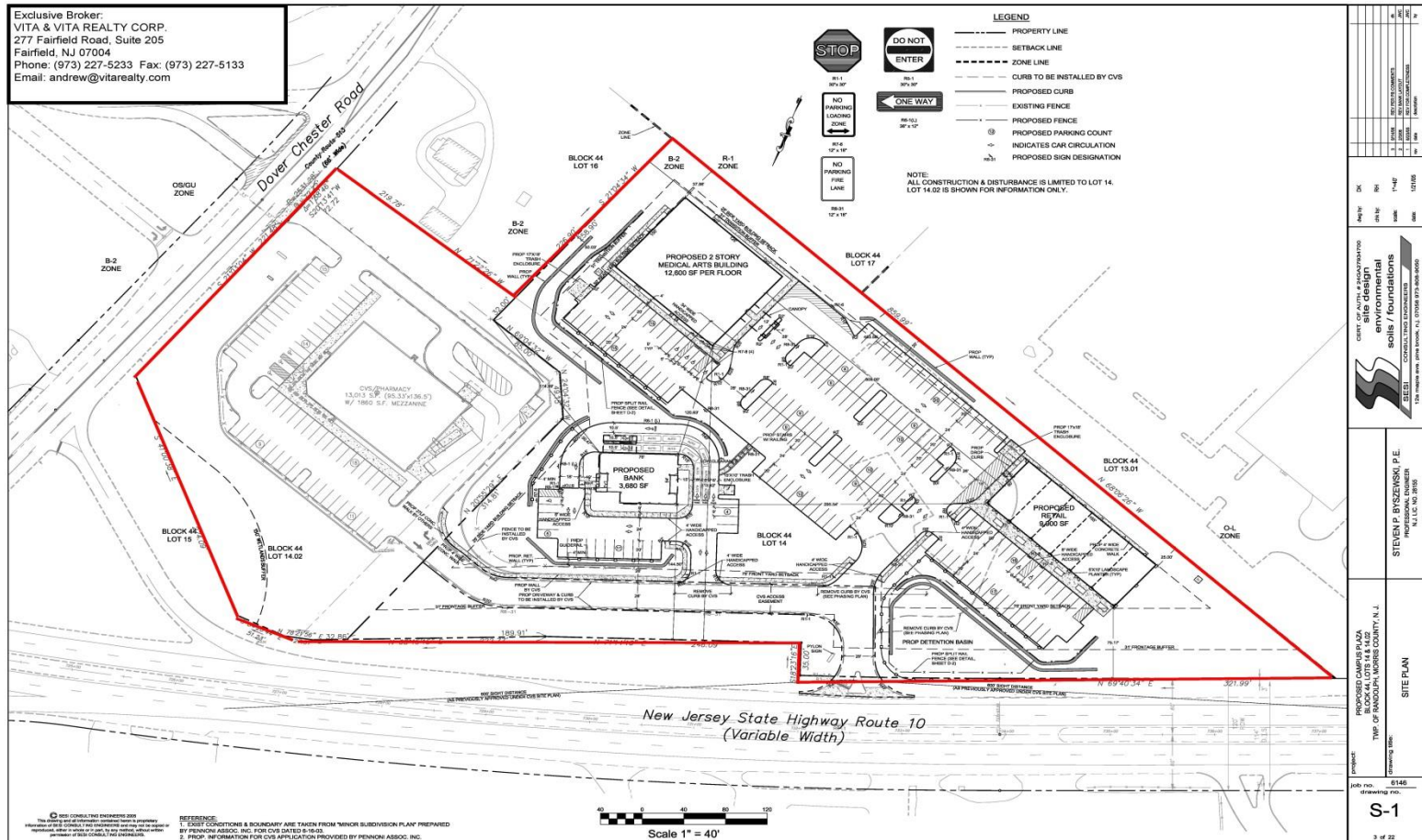
Andrew@VitaRealty.com

Anthony Vita

Tony@VitaRealty.com

T - 973-227-5233

F - 973-227-5133



Information obtained from sources deemed reliable. There is no guarantee, warrantee or representation made herein and same is submitted subject to errors, omissions, change of price, rental or other conditions, prior sale, lease, financing, or withdrawal without notice.

County Plaza

Phase 3 – Retail Shoppes

Andrew S. Vita, Jr.
Andrew@VitaRealty.com
Anthony Vita
Tony@VitaRealty.com
T - 973-227-5233
F - 973-227-5133

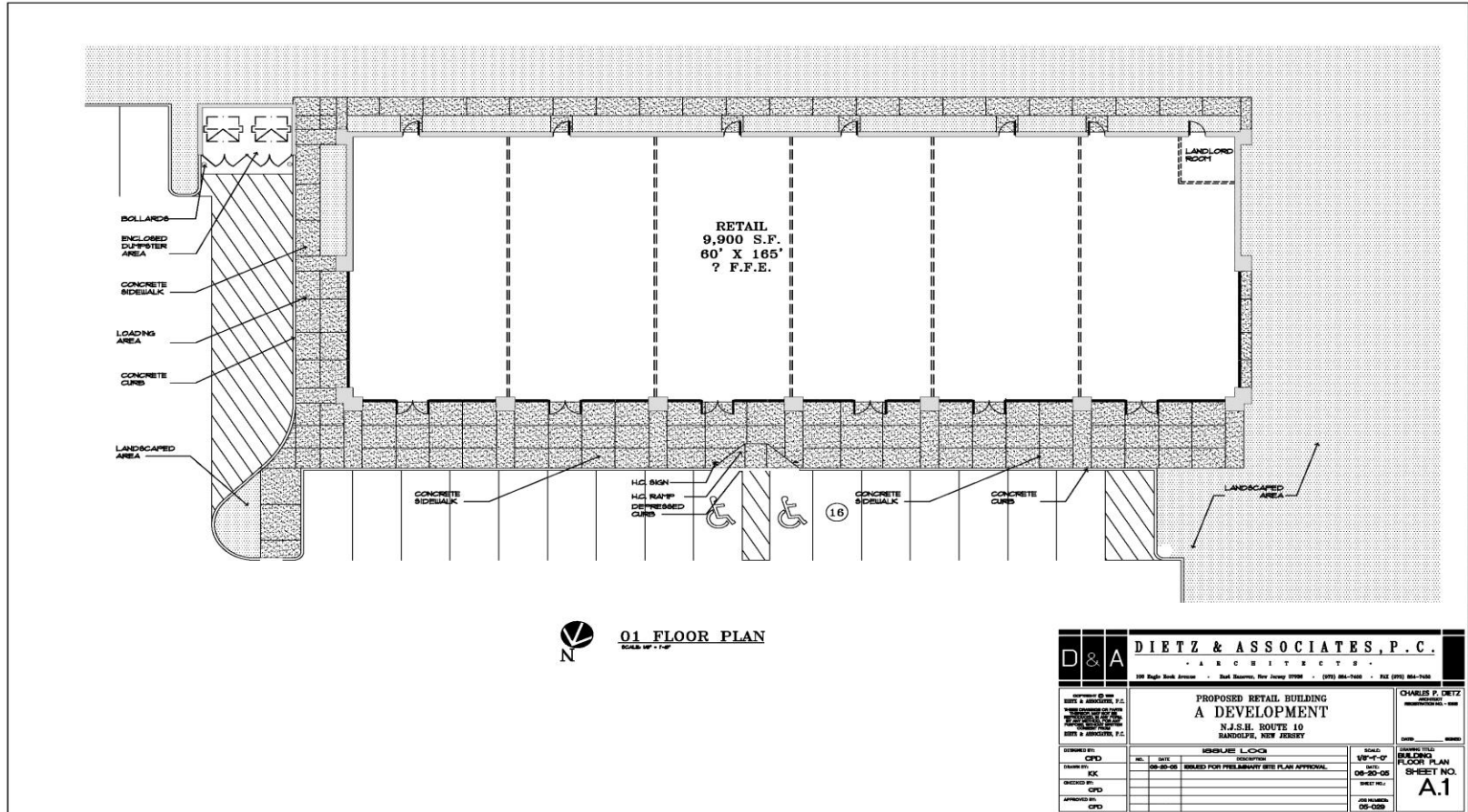


- 9,900 Sq. Ft.
(Divisible to 1,500 Sq. Ft.)
- Route 10 Frontage
- Direct Highway Access
- Excellent Visibility
- Adjacent to County College of Morris
- Population 113,179 (5 Miles)
- Average Household Income \$143,129 (1 Mile)
- Total Project GLA 51,793 Sq. Ft.
- On-Site Parking for 224 cars

County Plaza

Phase 3 - Retail Floor Plan

Andrew S. Vita, Jr.
Andrew@VitaRealty.com
 Anthony Vita
Tony@VitaRealty.com
 T - 973-227-5233
 F - 973-227-5133



D & A DIETZ & ASSOCIATES, P.C. ARCHITECTS <small>100 Eagle Rock Avenue • East Orange, New Jersey 07099 • (973) 864-7400 • FAX (973) 864-7400</small>		CHARLES F. DIETZ <small>REGISTERED ARCHITECT - NEW JERSEY</small>	
		PROPOSED RETAIL BUILDING A DEVELOPMENT N.J.S.H. ROUTE 10 RANDOLPH, NEW JERSEY	
DRAWN BY: CPD	DATE: 08-20-05	ISSUE LOG NO. DATE DESCRIPTION 1 08-20-05 ISSUED FOR PRELIMINARY SITE PLAN APPROVAL	SCALE: 1/8" = 1'-0" SHEET NO.: 08-20-05
CHECKED BY: CPD	APPROVED BY: CPD	JOB NUMBER: 05-059	BUILDING FLOOR PLAN SHEET NO.: A.1

County Plaza

Phase 4 – Approved Bank Pad

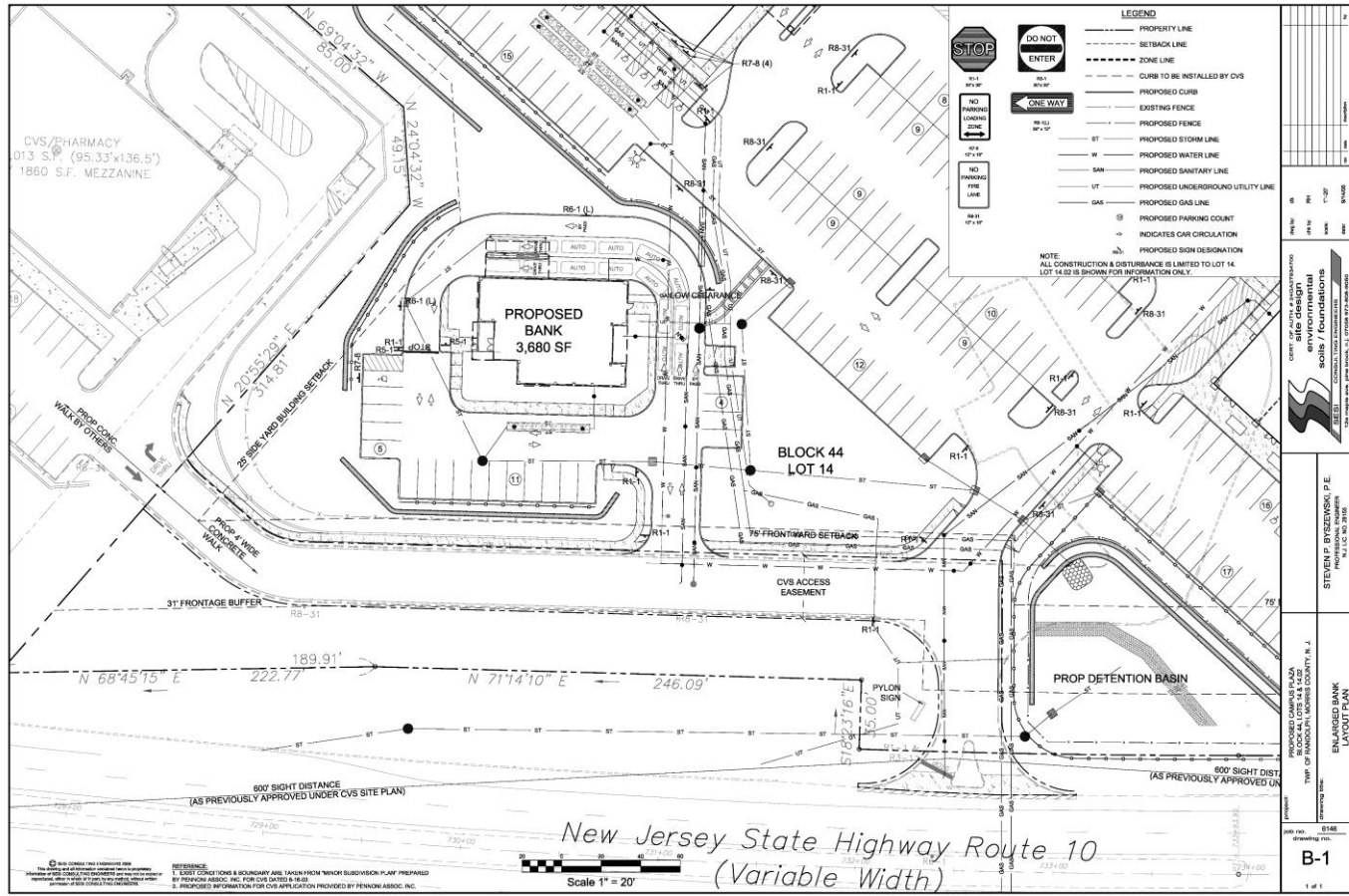
Andrew S. Vita, Jr.
Andrew@VitaRealty.com
Anthony Vita
Tony@VitaRealty.com
T - 973-227-5233
F - 973-227-5133



- 3,680 Sq. Ft.
- Two Drive-thru Lanes
- Route 10 Frontage
- Excellent Visibility
- Municipal Approvals Secured
- 20 Car Parking
- Adjacent to County College of Morris
- Avg. Household Income \$143,129 (1 Mile)
- Population 113,179 (5 Miles)
- Total Project GLA 51,793 Sq. Ft.

County Plaza Phase 4 – Bank Pad

Andrew S. Vita, Jr.
Andrew@VitaRealty.com
 Anthony Vita
Tony@VitaRealty.com
 T - 973-227-5233
 F - 973-227-5133



New Construction County Plaza – Route 10

VITA & VITA REALTY CORP.

Andrew S. Vita, Jr.

Andrew@VitaRealty.com

Anthony Vita

Tony@VitaRealty.com

T - 973-227-5233

F - 973-227-5133

