

# FOR LEASE

## Retail/Office Space Available in Atlantic

417 23RD AVE S, SEATTLE, WA 98144



### PROPERTY FEATURES

- Wonderful well-lit retail/office space available in the bustling Atlantic neighborhood
- Comes with two reserved customer parking spaces in front of the space, as well as free retail parking in the adjacent building's parking garage
- Includes access to two shared bathrooms
- Previously occupied by Lux Collective Pilates Studio
- Space is great for another Pilates studio, yoga studio, or general office user
- Available now

Type	Square Feet	Lease	Type
Retail/Office	1,503 SF	\$26/SF/YR	NNN (\$8.00/sf/yr 2020 Est.)

**EWING & CLARK**

FOR MORE INFORMATION, CONTACT:

2110 Western Ave., Seattle, WA 98121 [www.EwingandClark.com](http://www.EwingandClark.com)

**Damon Rudisill**

253.304.5868

[drudisill@ewingandclark.com](mailto:drudisill@ewingandclark.com)

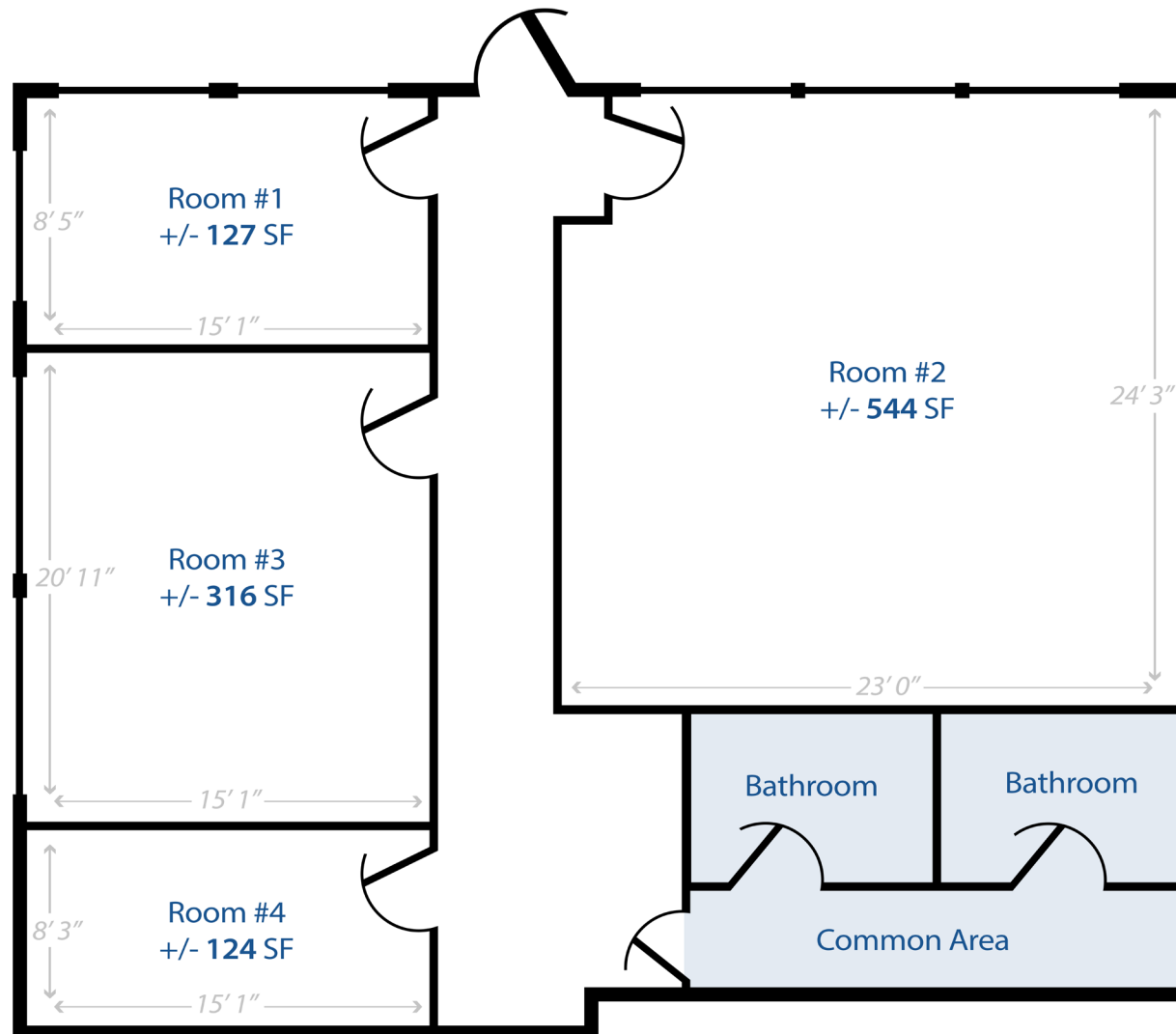
**Cameron Kent**

206.838.7737

[ckent@ewingandclark.com](mailto:ckent@ewingandclark.com)

# Floor Plan

417 23RD AVE S, SEATTLE , WA 98144



\*Approximate Square Footage  
Floor plan not to scale

**EWING & CLARK**

**FOR MORE INFORMATION, CONTACT:**

This information has been obtained from sources believed reliable. While we do not doubt its accuracy, we have not verified it and make no guarantee, warranty or representation about it. It is your responsibility to independently confirm its accuracy and completeness.

**Damon Rudisill**

253.304.5868

drudisill@ewingandclark.com

**Cameron Kent**

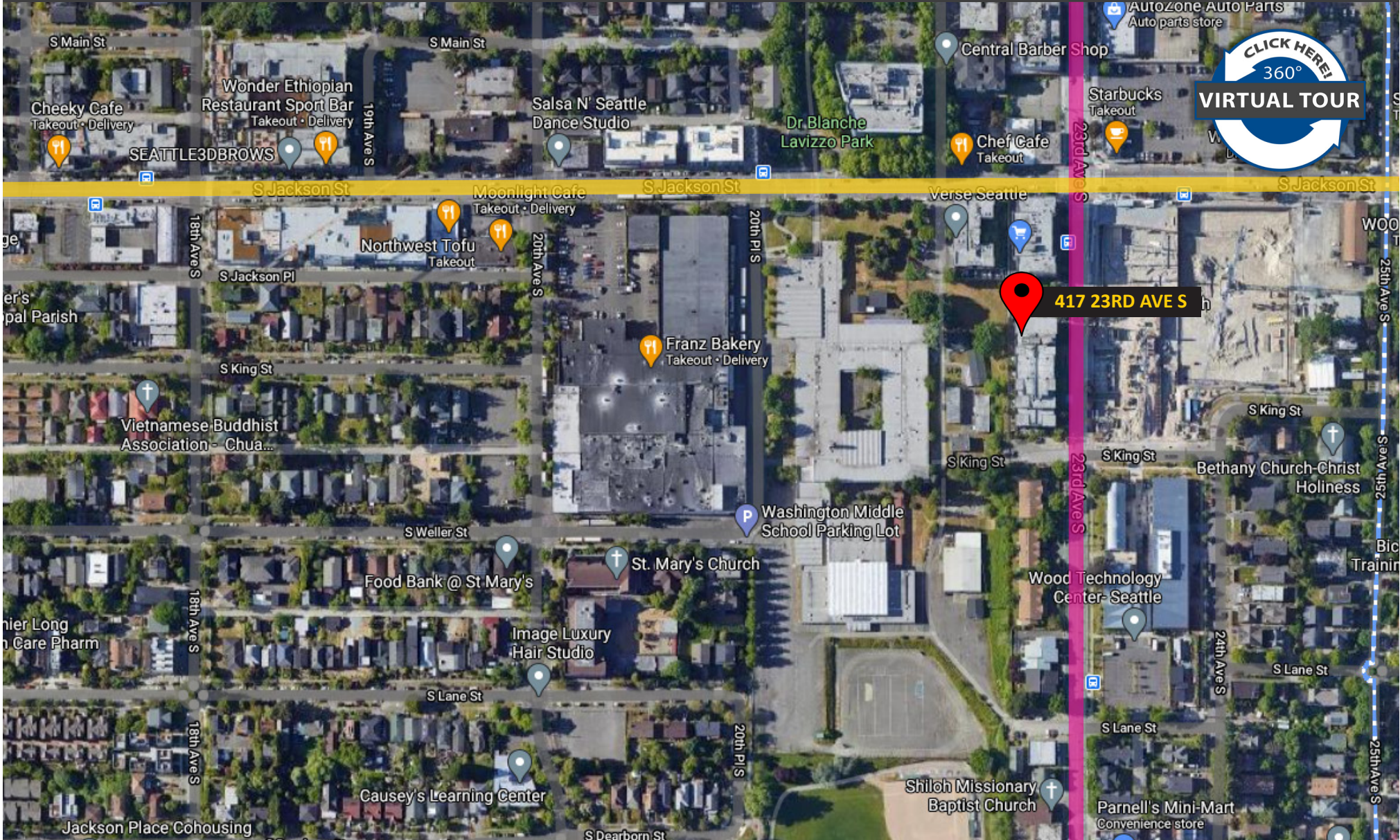
206.838.7737

ckent@ewingandclark.com



# Aerial

417 23RD AVE S, SEATTLE, WA 98144



**EWING & CLARK**

FOR MORE INFORMATION, CONTACT:

**Damon Rudisill**

253.304.5868

drudisill@ewingandclark.com

**Cameron Kent**

206.838.7737

ckent@ewingandclark.com



# Interior Photos

417 23RD AVE S, SEATTLE , WA 98144



**EWING & CLARK**

FOR MORE INFORMATION, CONTACT:

**Damon Rudisill**

253.304.5868

[drudisill@ewingandclark.com](mailto:drudisill@ewingandclark.com)

**Cameron Kent**

206.838.7737

[ckent@ewingandclark.com](mailto:ckent@ewingandclark.com)