

2945 THE VILLAGES PKWY | FOR LEASE | PREMIER DENTAL / MEDICAL OFFICE

SAN JOSE, CA 95135



- IDEAL FOR MULTIPLE PRACTICES
- 2,800 RSF
- TOUR BY APPOINTMENT ONLY
- PLEASE DO NOT DISTURB TENANT



FOR MORE
INFORMATION
CONTACT:

Thor Wiles
Vice President
Lic. 01237980
+1 408 453 7478, direct
+1 408 394 6335, cell
thor.wiles@cbre.com

Paul Lyles
First Vice President
Lic. 01236021
+1 408 453 7443, direct
+1 408 307 5363, cell
paul.lyles@cbre.com

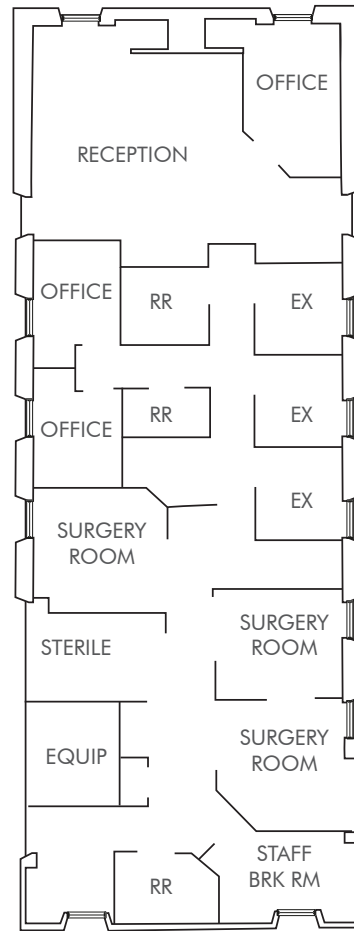
CBRE

2945 THE VILLAGES PKWY | FOR LEASE | PREMIER DENTAL / MEDICAL OFFICE

SAN JOSE, CA 95135

FLOOR PLAN

(Not to Scale)



[CLICK HERE
FOR VIRTUAL FLOOR PLAN](#)

FOR MORE
INFORMATION
CONTACT:

Thor Wiles
Vice President
Lic. 01237980
+1 408 453 7478, direct
+1 408 394 6335, cell
thor.wiles@cbre.com

Paul Lyles
First Vice President
Lic. 01236021
+1 408 453 7443, direct
+1 408 307 5363, cell
paul.lyles@cbre.com

CBRE

2945 THE VILLAGES PKWY | FOR LEASE | PREMIER DENTAL / MEDICAL OFFICE

SAN JOSE, CA 95135

PROPERTY FEATURES

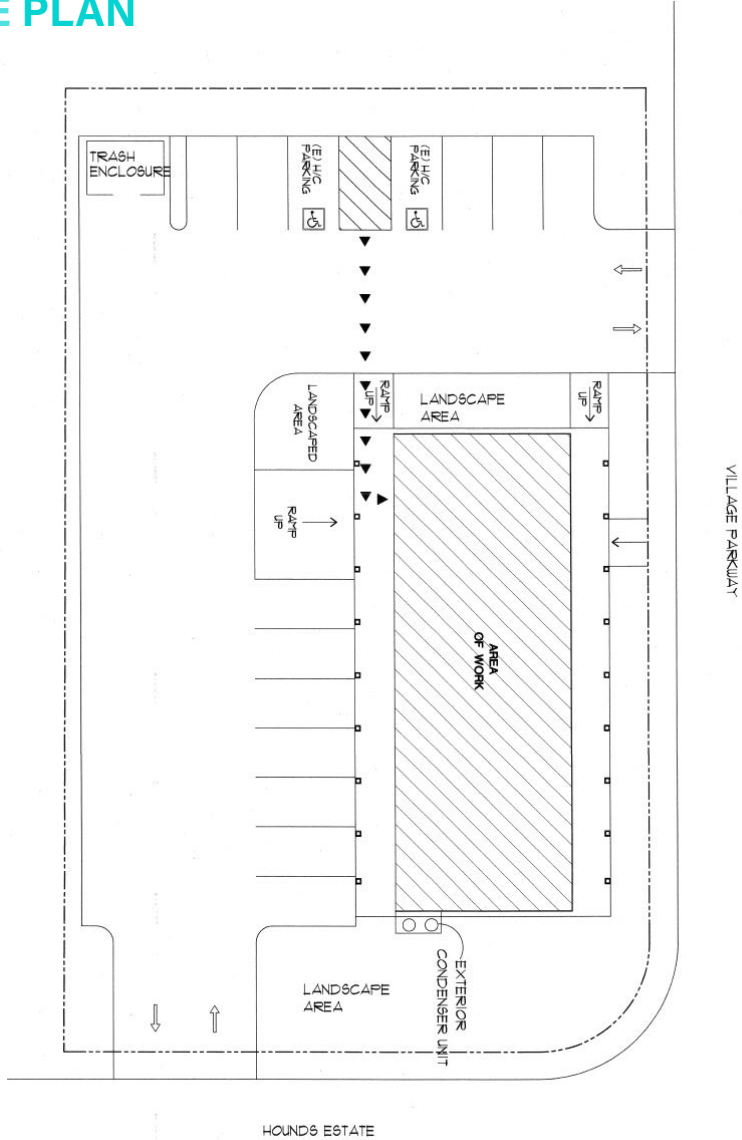
- 2,800 SF of Premier Dental/Medical Office Space for Lease
- 3 Turnkey Surgery Suites
- 3 Exam Rooms with Sinks
- 5/1,000 Parking
- 3 Restrooms
- Sterilization Area
- Staff / Break Room with Washer/Dryer
- Plumbed for Gases, Suction, & Water
- 3 Offices
- Present Use - Dental/Oral Surgery
- Ideal Layout for Dental/Physician Group
- Stunning Spanish Style Construction, Woodframe, Stucco & Tile
- Cathedral Ceiling Lobby with Fireplace



2945 THE VILLAGES PKWY | FOR LEASE | PREMIER DENTAL / MEDICAL OFFICE

SAN JOSE, CA 95135

SITE PLAN



CURRENT ZONING: R-1-1 (P.D.)
 GENERAL PLAN ZONING: NCC (NEIGHBORHOOD COMMUNITY CENTER)

© 2018 CBRE, Inc. ALL RIGHTS RESERVED. THIS INFORMATION HAS BEEN OBTAINED FROM SOURCES BELIEVED RELIABLE, BUT HAS NOT BEEN VERIFIED FOR ACCURACY OR COMPLETENESS. YOU SHOULD CONDUCT A CAREFUL, INDEPENDENT INVESTIGATION OF THE PROPERTY AND VERIFY ALL INFORMATION. ANY RELIANCE ON THIS INFORMATION IS SOLELY AT YOUR OWN RISK. CBRE AND THE CBRE LOGO ARE SERVICE MARKS OF CBRE, Inc. ALL OTHER MARKS DISPLAYED ON THIS DOCUMENT ARE THE PROPERTY OF THEIR RESPECTIVE OWNERS. PHOTOS HEREIN ARE THE PROPERTY OF THEIR RESPECTIVE OWNERS. USE OF THESE IMAGES WITHOUT THE EXPRESS WRITTEN CONSENT OF THE OWNER IS PROHIBITED.