

**New Ownership and
Leasing Team!**

**UP TO 20,000 SF
CONTIGUOUS**

**2H
offshore**

15990 North Barkers Landing
TimberwayOne

TIMBERWAY ONE

15990 N. Barkers Landing

Building Amenities

- Excellent Energy Corridor location
- Easy access to Interstate 10, Highway 6 and Memorial Drive
- Tranquil business setting
- Walking distance to numerous restaurants
- Three - story atrium lobby
- Garage parking
- Card key after - hours access
- Energy Star label



FOR LEASING

INFORMATION:

Monte Calvert
713.272.1234

Michelle Wogan
713.270.3348



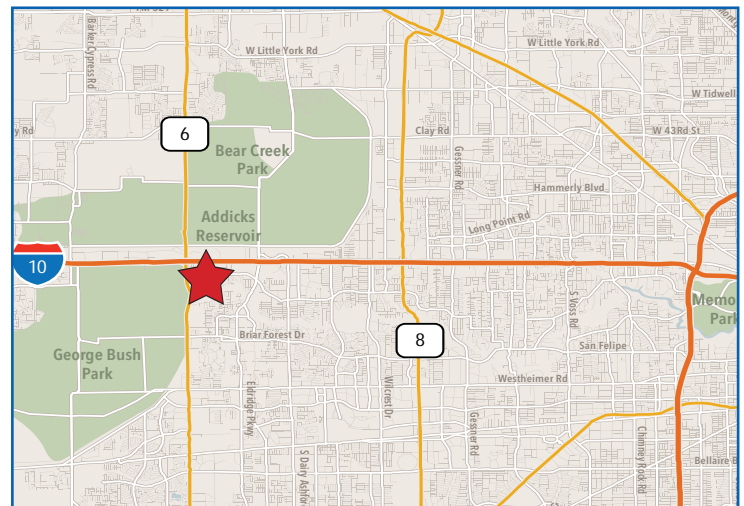
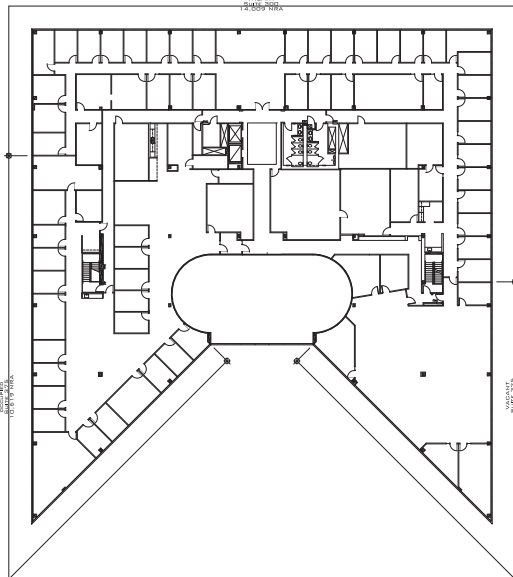
Available Suites

- 1st Floor - Up to 17,701 sf NRA
- 3rd Floor - Up to 20,000 sf NRA

Property Details

- 3 stories - Approx. 92,868 RSF
- 30,356 RSF floor plates
- Built 1983 / Renovated 1997
- Up to 3.1/1000 Parking

Level 3 - Typical Floorplate



FOR LEASING INFORMATION:

Monte Calvert

713.272.1234

monte.calvert@transwestern.com

Michelle Wogan

713.270.3348

michelle.wogan@transwestern.com

Owned by an affiliate of :

BANYAN STREET
CAPITAL

Transwestern
1900 West Loop South
Suite 1300
Houston, Texas 77027
713.270.7700