

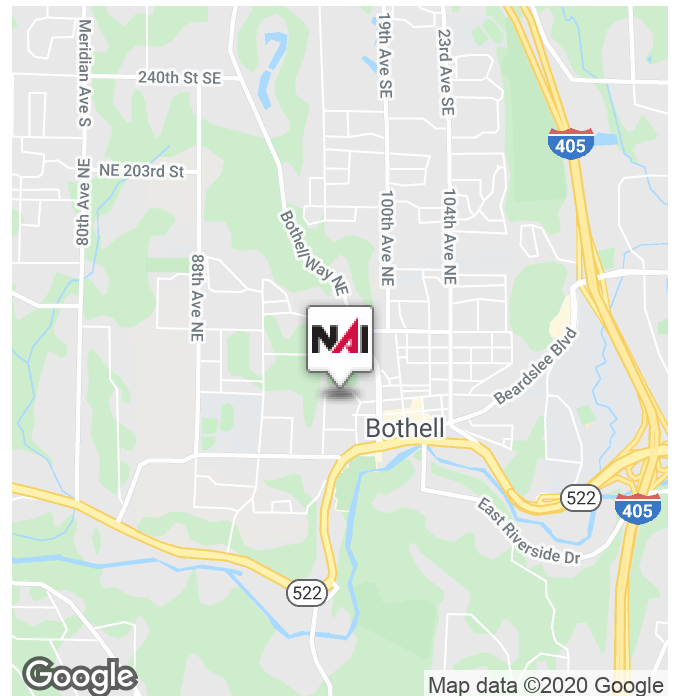


Bothell Professional Plaza

18323 98th Ave NE
Bothell, Washington 98011

Property Highlights

- 1,243 SF Office Space
- Great location in downtown Bothell
- Parking at 4.5 per 1,000 SF
- Two private offices, open area, break room
- Available February 1, 2020
- On-site owner/manager
- Rental Rate: \$28.00, NNN





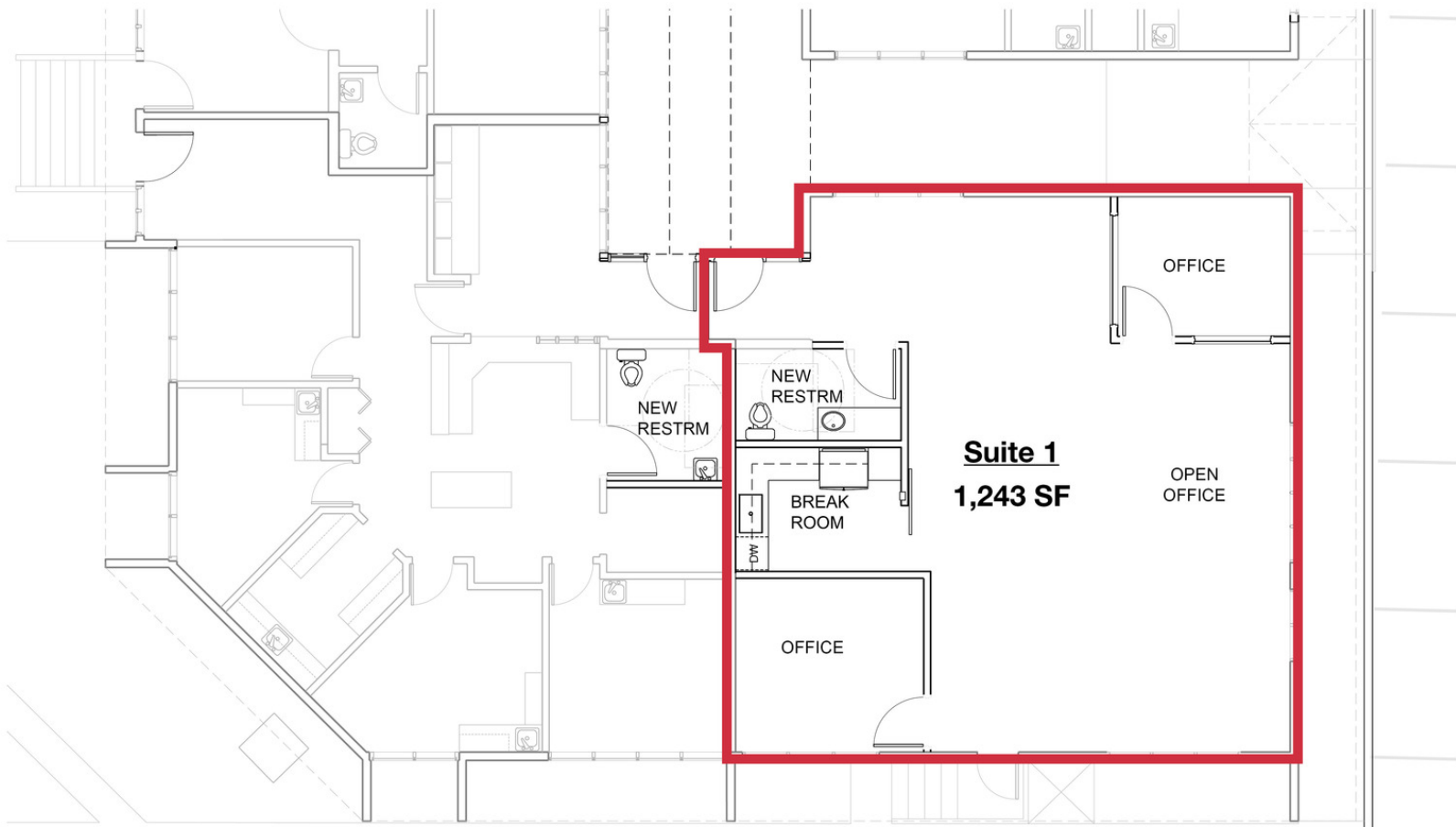
FOR LEASE



OFFICE SPACE



1,243 SF



2 R MILLER EXPANSION -- PLAN SUITES 1 & 2
3/16" = 1'-0"

BOTHELL PROFESSIONAL PLAZA NORTH BUILDING

27 MAY 2015



Dick Paylor, CCIM
Senior Vice President | 425.586.5624
dpaylor@nai-psp.com

THE INFORMATION SUPPLIED HEREIN IS FROM SOURCES WE DEEM RELIABLE. IT IS PROVIDED WITHOUT ANY REPRESENTATION, WARRANTY OR GUARANTEE, EXPRESSED OR IMPLIED, AS TO ITS ACCURACY. PROSPECTIVE BUYER OR TENANT SHOULD CONDUCT AN INDEPENDENT INVESTIGATION AND VERIFICATION OF ALL MATTERS DEEMED TO BE MATERIAL, INCLUDING, BUT NOT LIMITED TO, STATEMENTS OF INCOME AND EXPENSES. CONSULT YOUR ATTORNEY, ACCOUNTANT OR OTHER PROFESSIONAL ADVISOR.