



MULTIPLE OFFICE SUITES FOR LEASE

HEART OF WEST CHESTER BOROUGH



- 450 SF to 5,400 SF
- Suites from 3 to 7 Offices
- Parking Next-door

17 WEST MINER STREET | WEST CHESTER, PA 19382



PILLAR REAL ESTATE ADVISORS

P: 484-887-8202 | www.PillarRealEstateAdvisors.com

535 N. Church Street, West Chester, PA 19380

PROPERTY HIGHLIGHTS

- Class "A" Office Space center of West Chester Borough
- Full Service-All Inclusive rent
- Multiple Suite Scenarios Available with Flexible Suite Sizes
- Shared Use
 - Private Secured Elevator Access
 - Large Conference Room
 - Large Kitchen
 - Private Lobby
 - Multiple Restrooms
- Views of Downtown West Chester
- Proximity to all Restaurants and Shopping
- Adjacent Public Parking Facility
- Can be delivered furnished or unfurnished



17 WEST MINER STREET | WEST CHESTER, PA 19382



PILLAR REAL ESTATE ADVISORS

P: 484-887-8202 | www.PillarRealEstateAdvisors.com

535 N. Church Street, West Chester, PA 19380



MULTIPLE OFFICE SUITES FOR LEASE

HEART OF WEST CHESTER BOROUGH



17 WEST MINER STREET | WEST CHESTER, PA 19382



PILLAR REAL ESTATE ADVISORS

P: 484-887-8202 | www.PillarRealEstateAdvisors.com

535 N. Church Street, West Chester, PA 19380



MULTIPLE OFFICE SUITES FOR LEASE

HEART OF WEST CHESTER BOROUGH



17 WEST MINER STREET | WEST CHESTER, PA 19382



PILLAR REAL ESTATE ADVISORS

P: 484-887-8202 | www.PillarRealEstateAdvisors.com

535 N. Church Street, West Chester, PA 19380



STOVE & TAP

SEDONA
TAPHOUSE



WELLS FARGO



Limoncello



EST. 1983
CARLINO'S

 **Market Street Print**
Fast. Easy. Done.

P
PIETRO'S PRIME
STEAKHOUSE • MARTINI BAR

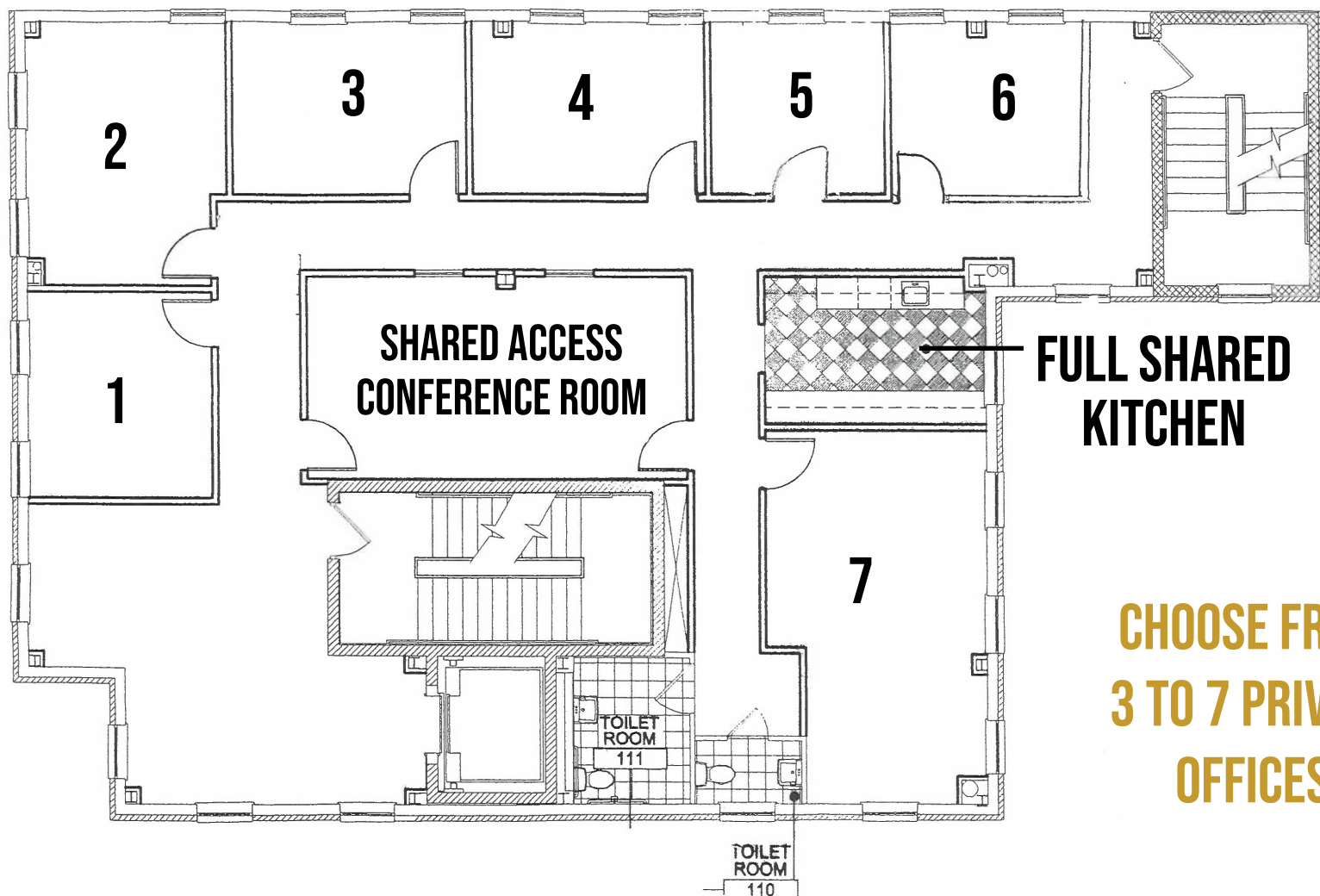
17 WEST MINER STREET | WEST CHESTER, PA 19382



PILLAR REAL ESTATE ADVISORS

P: 484-887-8202 | www.PillarRealEstateAdvisors.com

535 N. Church Street, West Chester, PA 19380



**CHOOSE FROM
3 TO 7 PRIVATE
OFFICES**

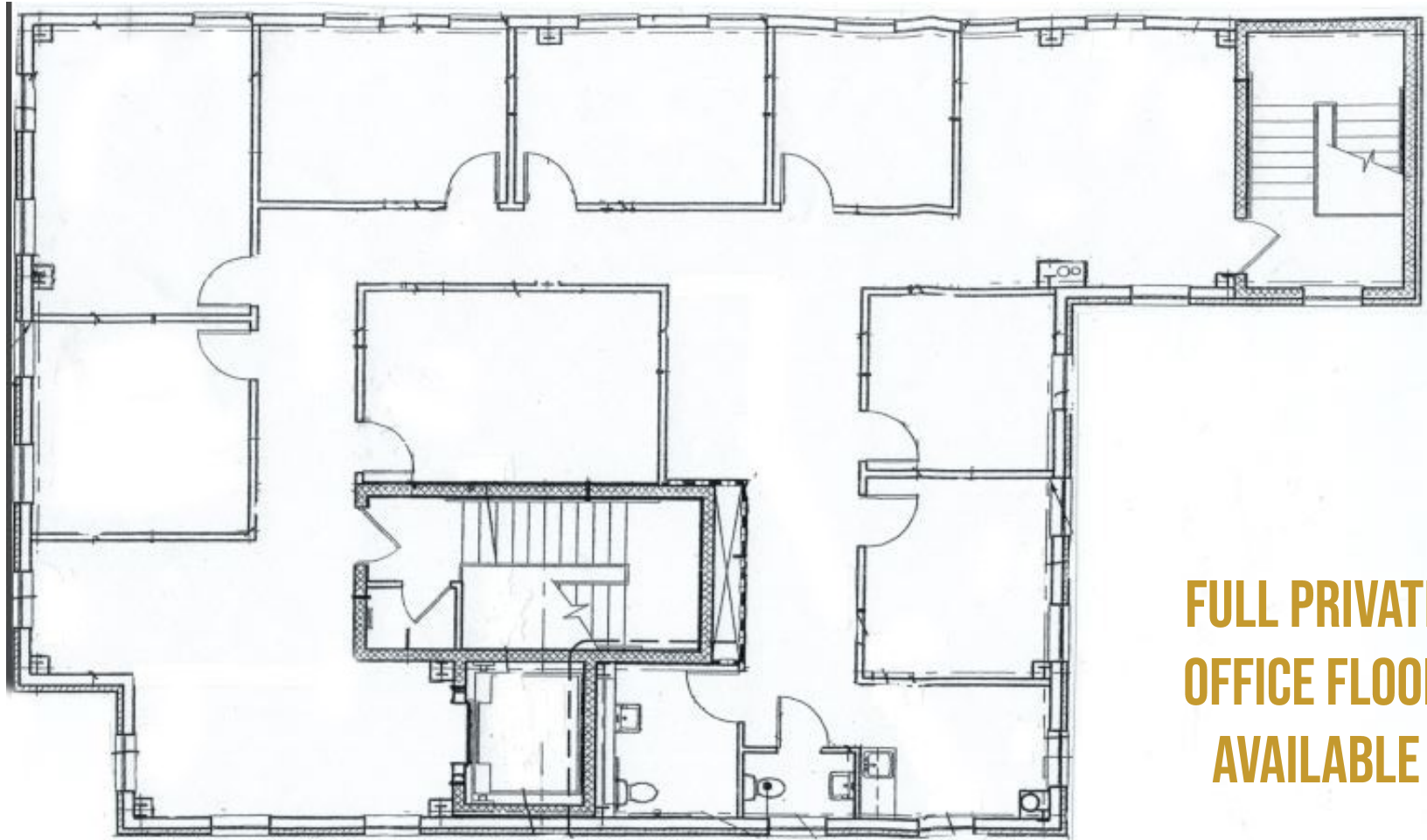
17 WEST MINER STREET | WEST CHESTER, PA 19382



PILLAR REAL ESTATE ADVISORS

P: 484-887-8202 | www.PillarRealEstateAdvisors.com

535 N. Church Street, West Chester, PA 19380



**FULL PRIVATE
OFFICE FLOOR
AVAILABLE**

17 WEST MINER STREET | WEST CHESTER, PA 19382

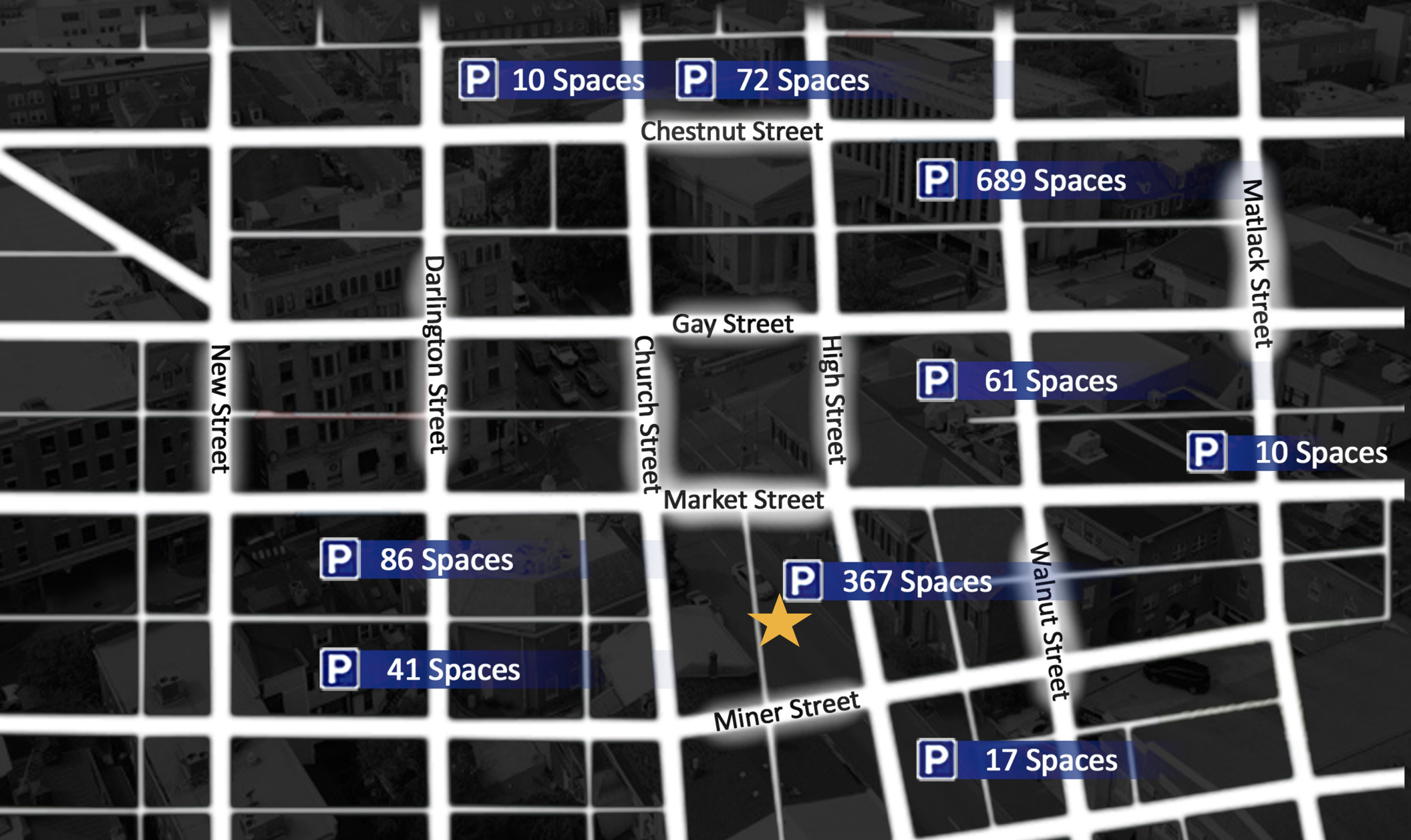


PILLAR REAL ESTATE ADVISORS

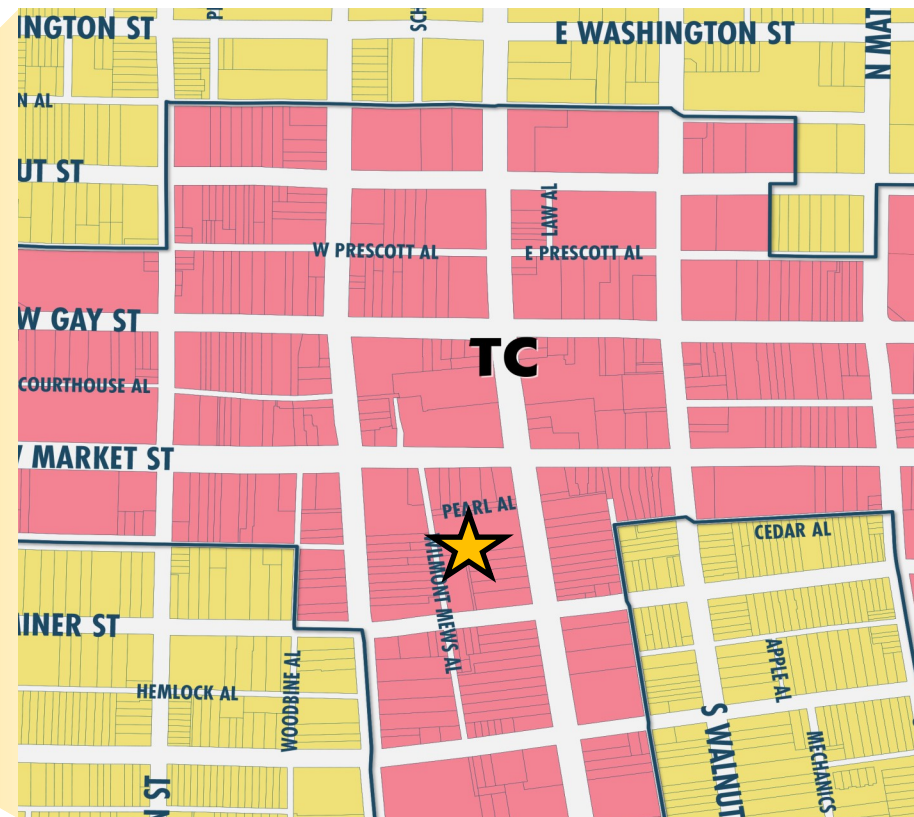
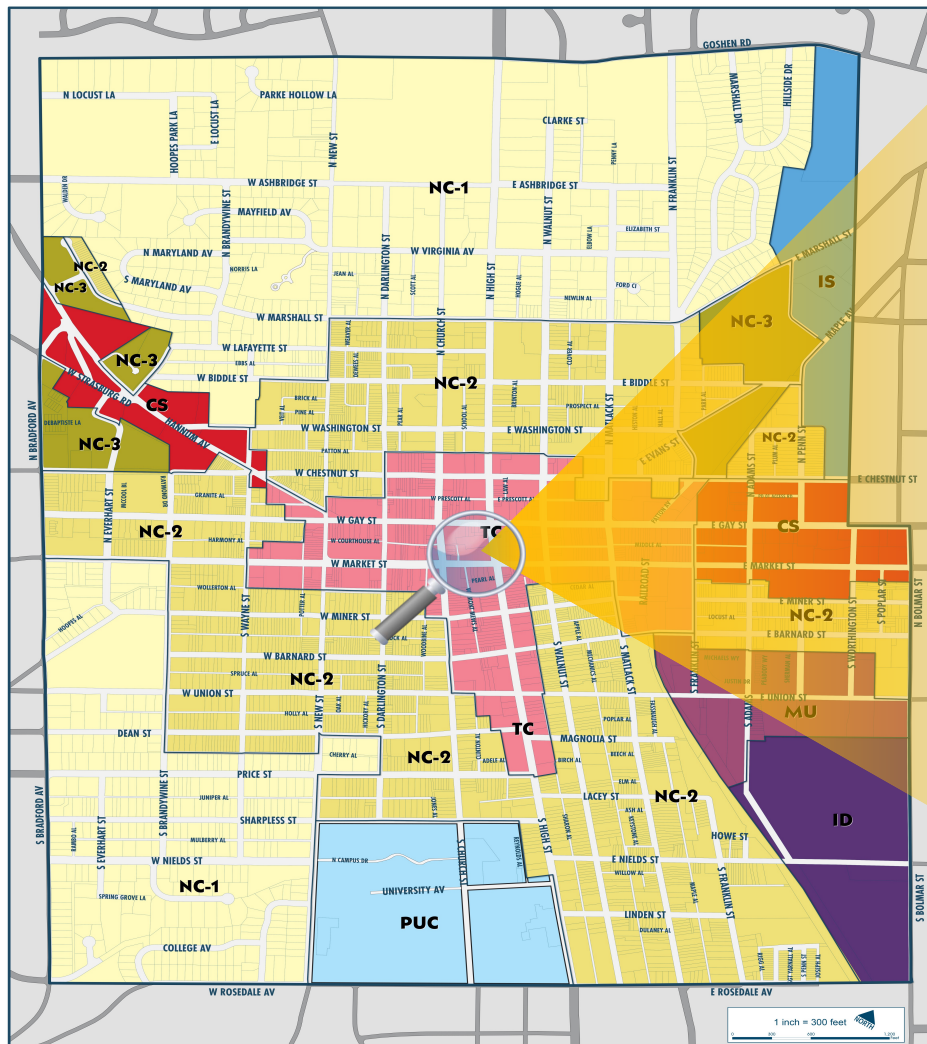
P: 484-887-8202 | www.PillarRealEstateAdvisors.com

535 N. Church Street, West Chester, PA 19380

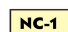


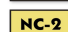





WEST CHESTER PUBLIC PARKING



**All zoning information should be independently verified with governing municipality



LEGEND

 NC-1	NEIGHBORHOOD CONSERVATION 1	 MU	MIXED USE	 IS	INSTITUTIONAL
 NC-2	NEIGHBORHOOD CONSERVATION 2	 TC	TOWN CENTER	 PUC	PLANNED UNIVERSITY CAMPUS
 NC-3	NEIGHBORHOOD CONSERVATION 3	 CS	COMMERCIAL SERVICE	 ID	INDUSTRIAL

17 WEST MINER STREET | WEST CHESTER, PA 19382

PILLAR REAL ESTATE ADVISORS

P: 484-887-8202 | www.PillarRealEstateAdvisors.com

535 N. Church Street, West Chester, PA 19380



§ 112-309. TC Town Center District.

The Town Center District is designed to accommodate uses appropriate to the Central Business District, especially within the Retail Overlay District, and to provide regulations to ensure that the scale and character of the historic and retail commercial environment is maintained. The district is also designed to include regulations to encourage the provision of pedestrian amenities and protect the character of adjoining residential zoning districts. The district is not intended to accommodate commercial uses which are more appropriate for the Commercial Service District and entail high-volume traffic turnover, large parking areas and/or outdoor storage and display areas.

A. Uses: See § 112-304 for permitted uses.

B. Dimensional requirements.

Lot area, minimum	2,500 square feet
Lot width, minimum	20 feet
Build-to line/front yard	Match existing adjacent setbacks
Side yard, minimum	Existing adjacent, 5 feet minimum
Rear yard, minimum	5 feet
Height, maximum	45 feet
Impervious coverage, maximum	95%
Building coverage, maximum	90%

C. Design standards.

- (1) Due to limited space available in the Town Center District, the required green areas may be computed using the following alternatives in lieu of plantings in the ground:
 - (a) Sidewalk or courtyard planters may be utilized. The square footage of the top of the planters and 1/2 of the visible surface area of the planter may be computed.
 - (b) Trellis or latticework against a building which supports evergreen vines or espaliered shrubs or trees may be utilized. The total square footage of evergreen plant materials affixed to such structures may be computed.
 - (c) An overhead pergola or latticed canopy within a courtyard or in another space outside of the required yard setbacks may be utilized. One-fourth of the square footage of such structure may be computed, provided that such structure supports ornamental vines for at least 1/4 of its surface area.
 - (d) Unit pavers, including brick, flagstone and Grasserete, may be utilized. The total square footage of such pavers may be computed. The surface area of existing brick and flagstone pavers may be computed, provided

:1

§ 112-309

that such pavers are in good condition as determined by the Zoning Officer.

- (2) All lighting, signage, fencing, pavements, storage, traffic and other environmental controls shall be in accordance with the provisions of this chapter.
- (3) All construction in the Historic (HARB) District shall be in accordance with this chapter.
- (4) Additional design standards within the Retail Overlay District shall be as follows:
 - (a) No more than 35 feet of continuous street wall shall be created for any new building. Any building which is wider than 32 feet shall have a recess or projections of a minimum of three inches at intervals no greater than 35 feet, in the form of a pilaster, column, fenestration or like-type vertical articulation.
 - (b) Except for buildings in the Town Center HO-60 Overlay which exceed 45 feet up to a maximum height of 60 feet, a continuous street wall shall be created along the sidewalk frontage, except for a first-floor break in the street wall that may be created for a deck parking structure, where such break in the street wall does not exceed 24 feet in width.
 - (c) No surface parking lot shall be permitted.
 - (d) Any parking provided on-site shall be placed to the rear of buildings and accessed off an alley or from an existing curb cut.
 - (e) No new curb cuts shall be permitted.
 - (f) No building shall be a windowless box. Building openings and windows shall constitute no less than 30% of all exterior walls fronting on a primary street (not including alleys and service streets).
 - (g) No building shall have opaque windows along a primary street, except for spandrel panels at floor lines.
 - (h) All offices, banks and financial institutions, community facilities, and governmental uses in the Retail Overlay District shall provide a pedestrian-oriented frontage in the form of a landscaped entrance area, or window display area which serves as an art gallery or other like display space accessible to pedestrians.

§ 112-309

:2

17 WEST MINER STREET | WEST CHESTER, PA 19382



PILLAR REAL ESTATE ADVISORS

P: 484-887-8202 | www.PillarRealEstateAdvisors.com

535 N. Church Street, West Chester, PA 19380



MULTIPLE OFFICE SUITES FOR LEASE

HEART OF WEST CHESTER BOROUGH

PILLAR REAL ESTATE ADVISORS

BRINGING EXPERIENCE, PROFESSIONALISM, AND INTEGRITY
TO COMMERCIAL REAL ESTATE BROKERAGE

ERIC KUHN

EKuhn@PillarRealEstateAdvisors.com
484-887-8202 | Ext. 101

ANDREW TURNER

ATurner@PillarRealEstateAdvisors.com
484-887-8202 | Ext. 102

ANDREW CARLINO

ACarlino@PillarRealEstateAdvisors.com
484-887-8202 | Ext. 103

"The information contained in this document has been obtained from sources believed reliable. While Pillar Real Estate Advisors, LLC does not doubt its accuracy, Pillar Real Estate Advisors, LLC. has not verified it and makes no guarantee, warranty or representation about it. It is your responsibility to independently confirm its accuracy and completeness. Any projections, opinions, assumptions or estimates used are for example only and do not represent the current or future performance of the property. The value of this transaction to you depends on several factors which should be evaluated by your tax, financial and legal advisors to determine to your satisfaction the suitability of the property for your needs.

Photos herein are the property of their respective owners and use of these images without the express written consent of the owner is prohibited."

17 WEST MINER STREET | WEST CHESTER, PA 19382



PILLAR REAL ESTATE ADVISORS

P: 484-887-8202 | www.PillarRealEstateAdvisors.com

535 N. Church Street, West Chester, PA 19380