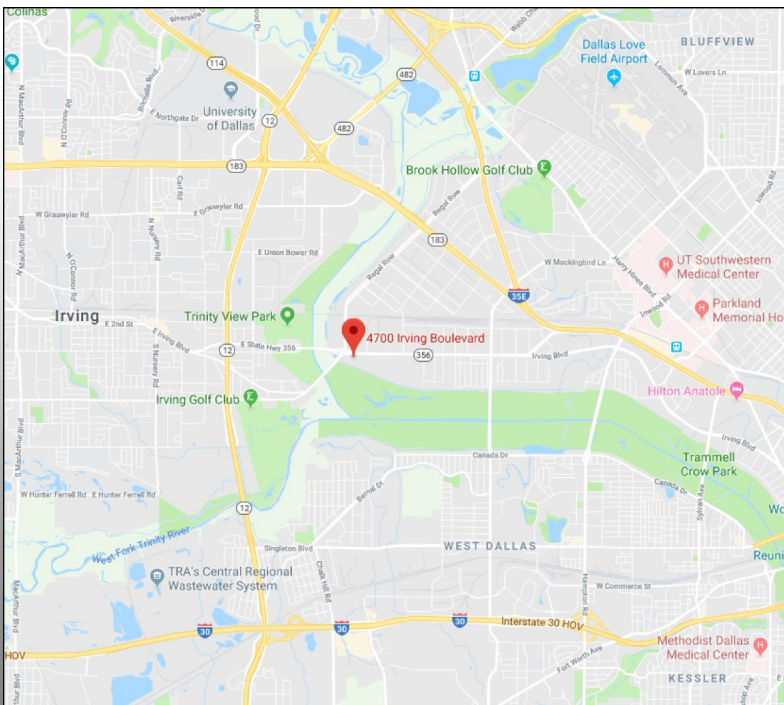
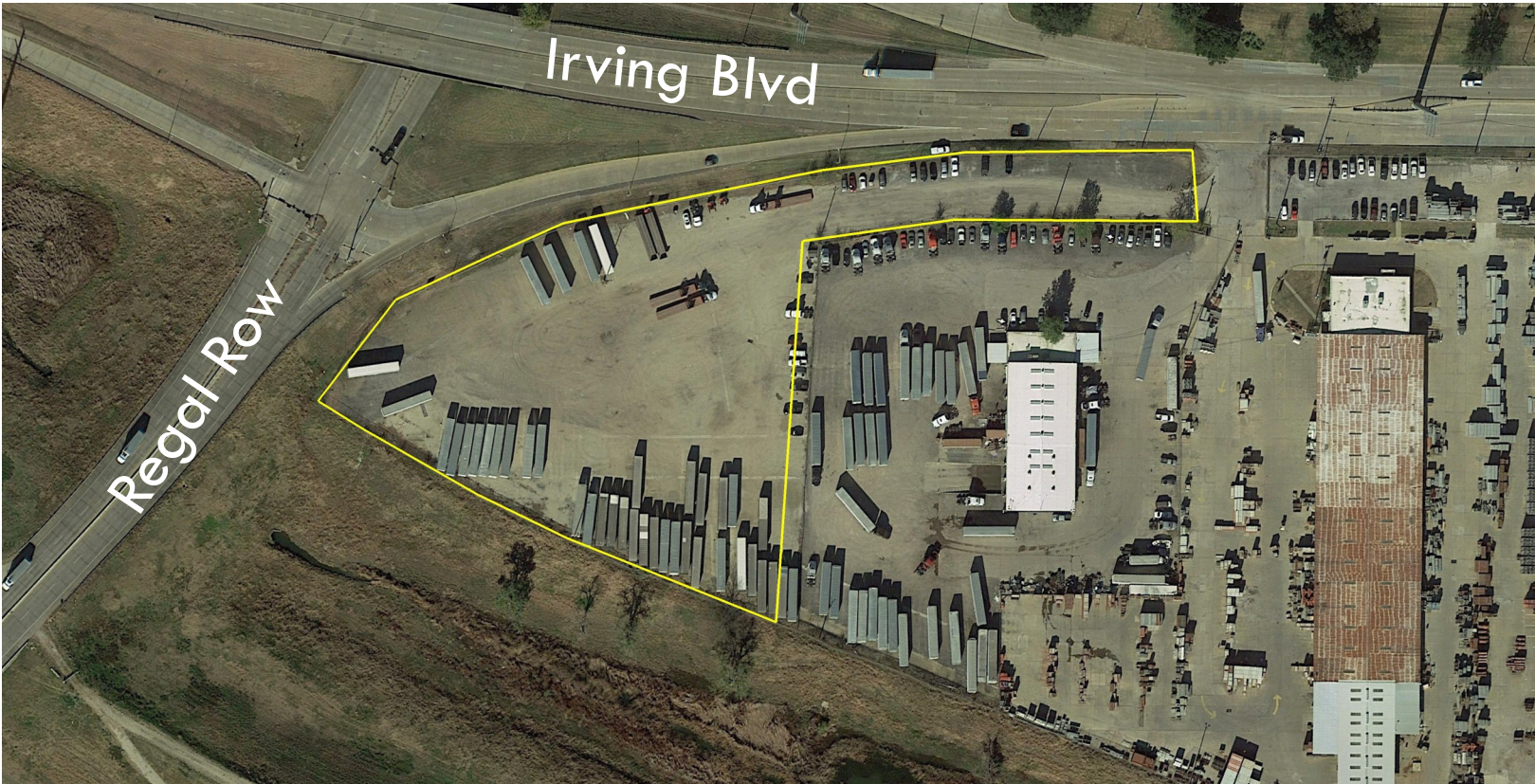


FOR LEASE: 3.79 ACRES

4700 IRVING BOULEVARD, DALLAS, TX 75247

INDUSTRIAL REAL ESTATE BROKERAGE

WWW.MERCER-COMPANY.COM



DETAILS

AVAILABLE FOR LEASE

- ◆ TOTAL SF: 165,092
- ◆ OFFICE SF: ± 1,200
- ◆ TRUCK OR TRAILER STORAGE
- ◆ FENCED LOT
- ◆ POTENTIAL BUILD-TO-SUIT
MAINTENANCE FACILITY
- ◆ OFFICE & DRIVERS AREA
- ◆ DRIVERS SHOWER AREA

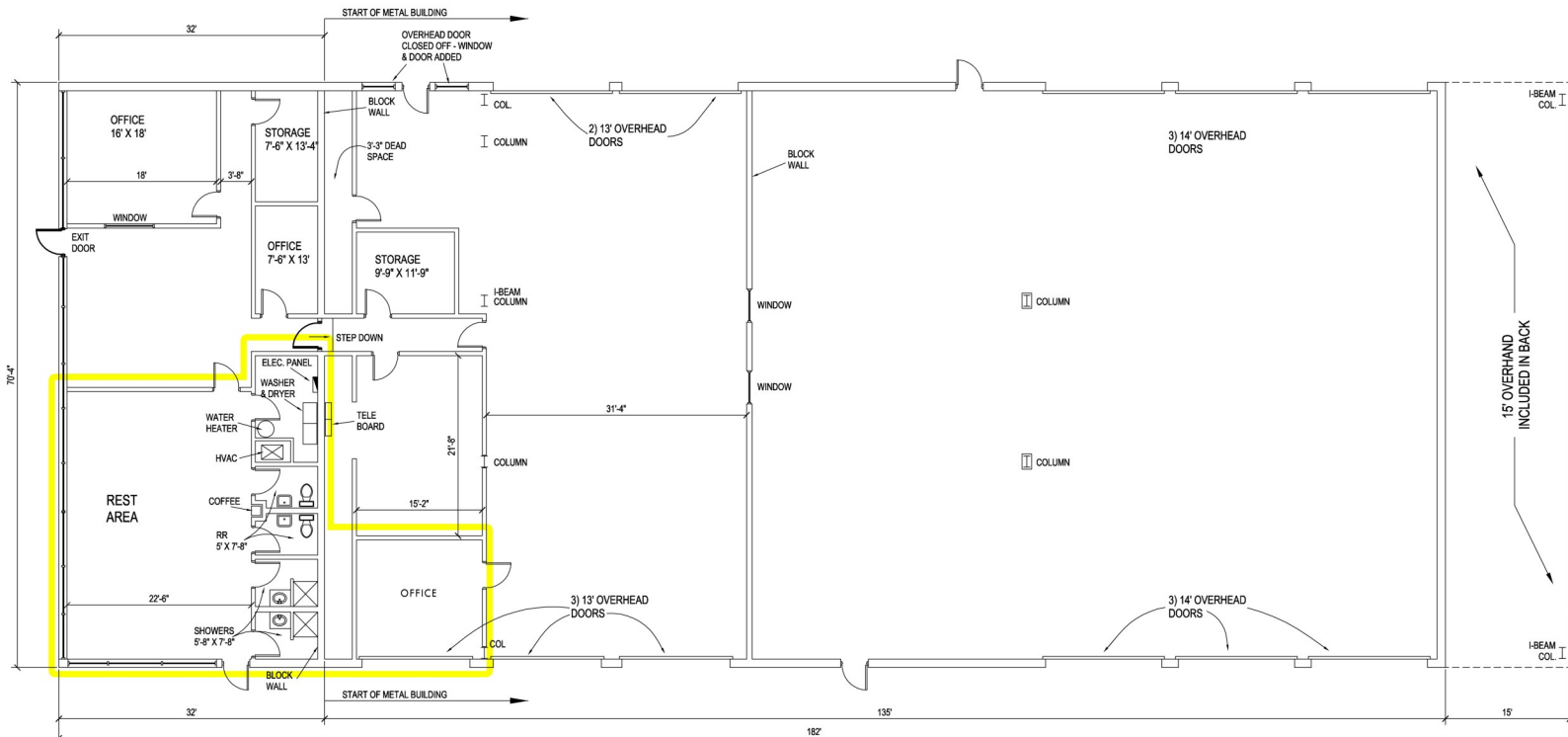
JEREMY MERCER
CELL 214.682.3447
JEREMY@MERCER-COMPANY.COM

FOR LEASE: 3.79 ACRES

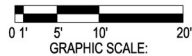
4700 IRVING BOULEVARD, DALLAS, TX 75247

INDUSTRIAL REAL ESTATE BROKERAGE

WWW.MERCER-COMPANY.COM



BUILDING PLAN - 12,800 S.F. (INCLUDING OVERHANG)
4,700 IRVING BLVD
DALLAS, TEXAS
REV1a - 8/2/11



The information contained herein has been given to us by the owner of the property or other sources we deem reliable. We have no reason to doubt its accuracy, but we do not guarantee it. All information should be verified before purchase or lease.