



# HEADWAY OFFICE PARK

4410, 4500 & 4620  
NORTH STATE ROAD 7  
Lauderdale Lakes, FL 33319



**TWO FLOORS** With  
**30K SF AVAILABLE**  
Offering Exterior Building Signage



**MAJOR BUILDING  
RENOVATIONS**  
Underway



**CLASS A FINISHES** At  
Class B Rates





# PROPERTY FEATURES

- On-site gym
- On-site management
- Multi-floor availability for up to 38,000 SF
- Exterior building signage available
- Professional Class B building
- Lakefront setting
- Immediate access to Florida's Turnpike & easy access to I-95
- Close proximity for banking, retail and restaurants
- Immediate occupancy available



# SPEC SUITE

4410 BLDG / 2ND FLOOR

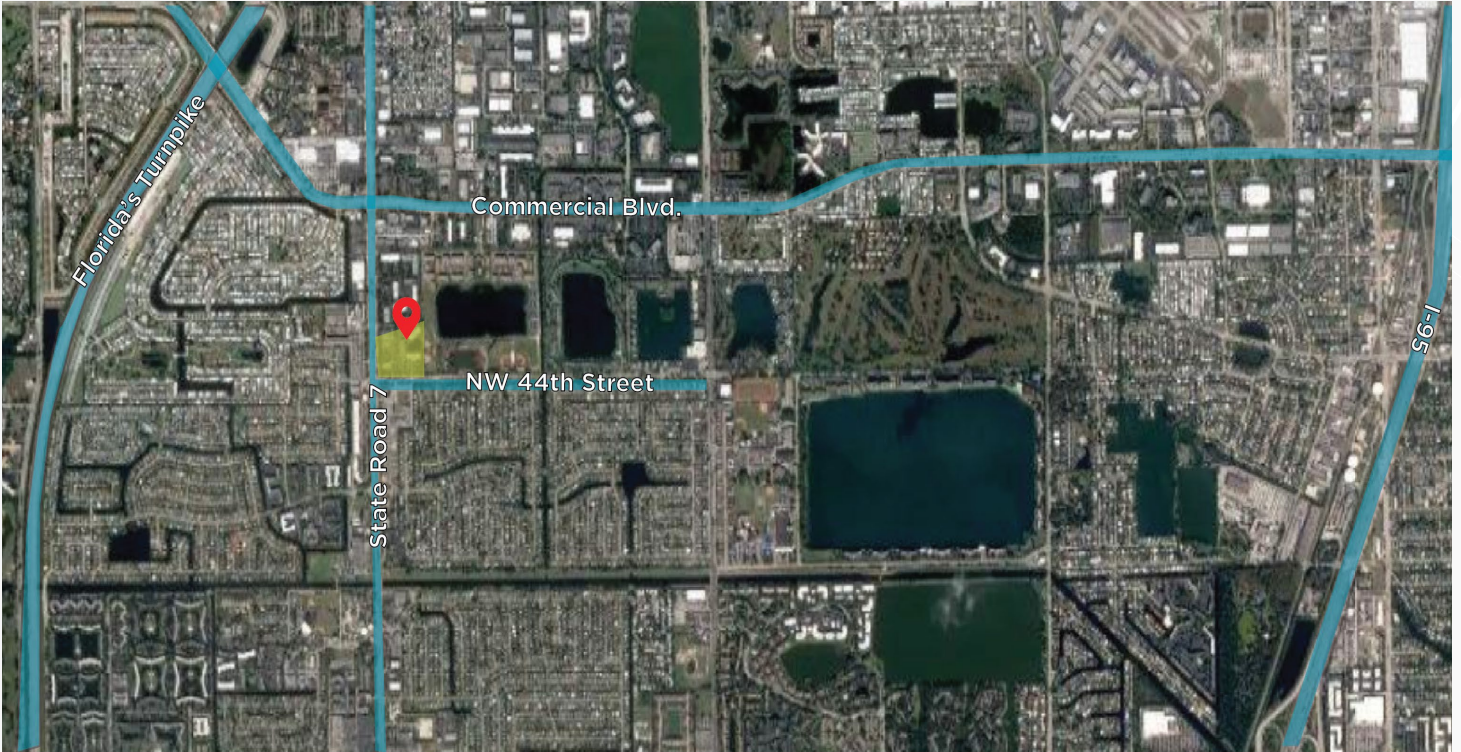


# SPEC SUITE

4410 BLDG / 2ND FLOOR



# PRIME LOCATION



## PROPERTY DETAILS

**131,463**

Building Total (SF)

**1,187 - 29,431**

Available (SF)

**\$22.00 FS**

Price

**4/1,000**

Parking

Donna Korn  
Managing Director  
+1 954 377 0498  
[Donna.korn@cushwake.com](mailto:Donna.korn@cushwake.com)

Beau Ladwig  
Associate  
+1 954 938 2610  
[Beau.ladwig@cushwake.com](mailto:Beau.ladwig@cushwake.com)

