



## PROPERTY DETAILS

- Adjacent to Super Target and other national and local retailers and office tenants
- Located at the entrance of the recently announced \$32 Million Fishers Technology Park
- Walking distance to downtown Fishers Nickel Plate District including the many restaurants and retail shops located within downtown Fishers
- Easy access to I-69 and 116th Street
- Convenient Parking
- Exterior Building Signage
- 1,857sf - 4,773sf

## LEGEND

-  The Edge
-  The Switch
-  The Depot
-  Fishers City Hall
-  1 North
-  Fishers Technology Center-Coming in 2017
-  4 Day Ray
-  Braden

**DREW KELLY**

Director of Retail

317.645.4444 x. 255

drew.kelly@realtyqwest.com

**REALTYQWEST, LLC**

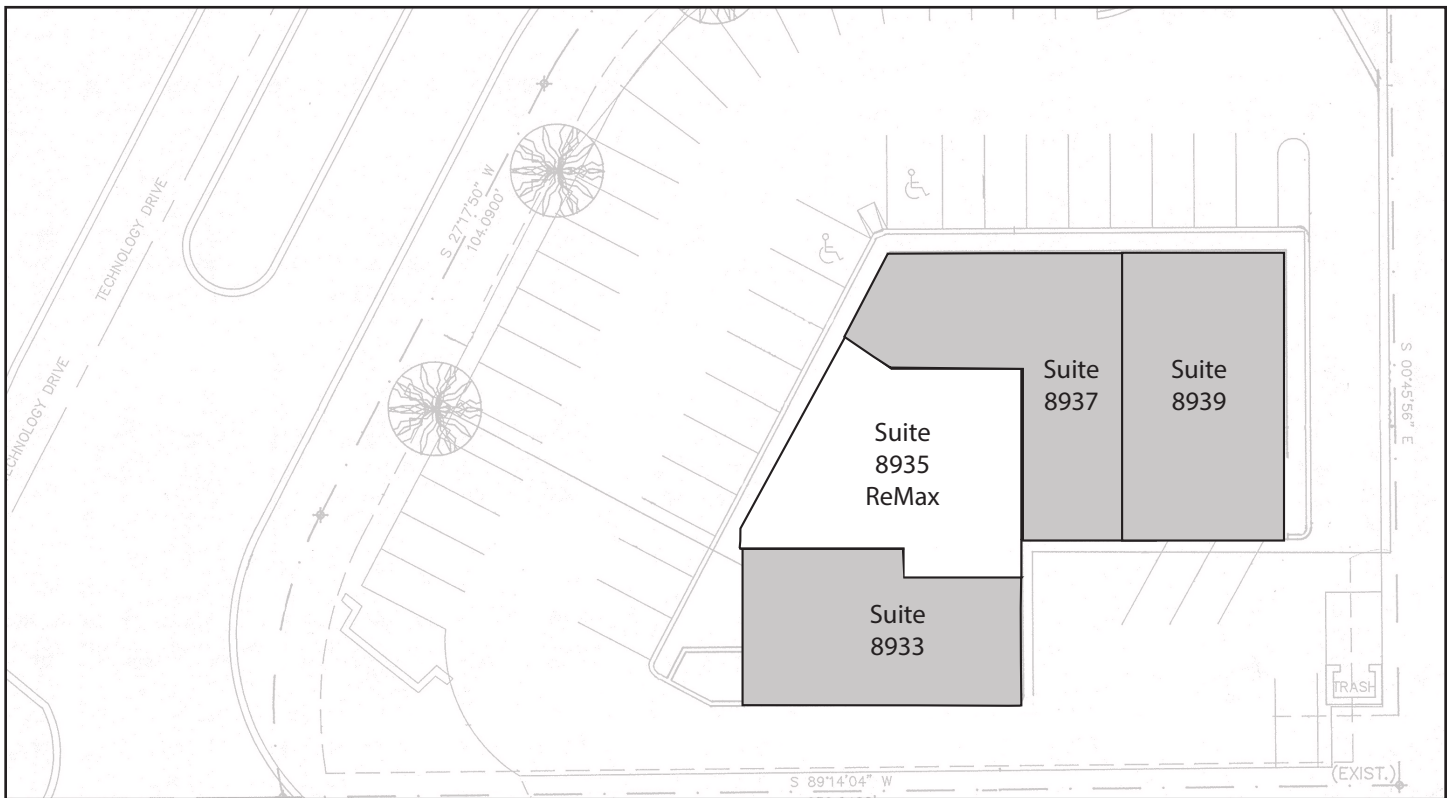
5723 Birtz Rd.

Indianapolis, IN 46216

<http://commercial.realtyqwest.com>



UNIT	TENANT	S.F.
8939	Available	2,775 sf
8937	Available	1,998 sf
8935	ReMax	1,660 sf
8933	Available	1,857 sf



**DREW KELLY**

Director of Retail

317.645.4444 x. 255

drew.kelly@realtyqwest.com

**REALTYQWEST, LLC**

5723 Birtz Rd.

Indianapolis, IN 46216

<http://commercial.realtyqwest.com>