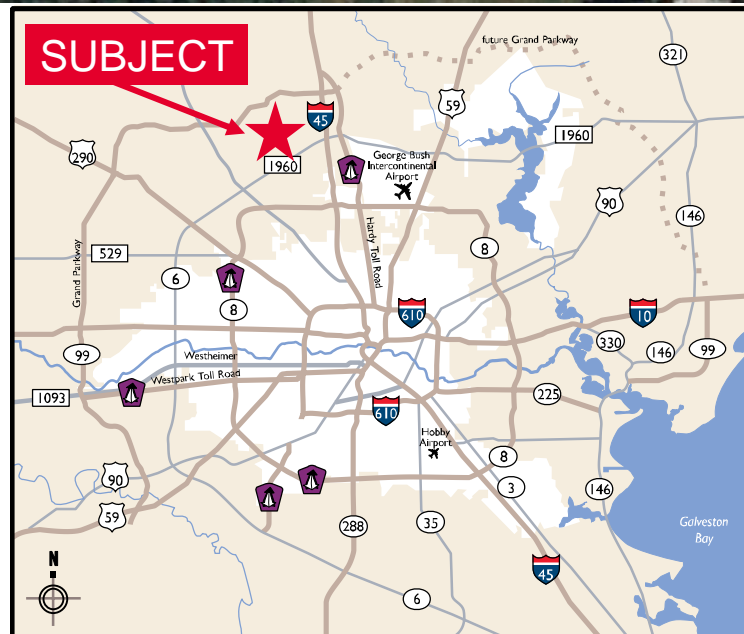




- Total Land Area – +/- 3.0 Acres
- Frontage and Visibility from Louetta Rd.
- 100' of frontage on Louetta Rd.
- Ideal Retail/Restaurant Development Site
- Price : Call Broker For Pricing



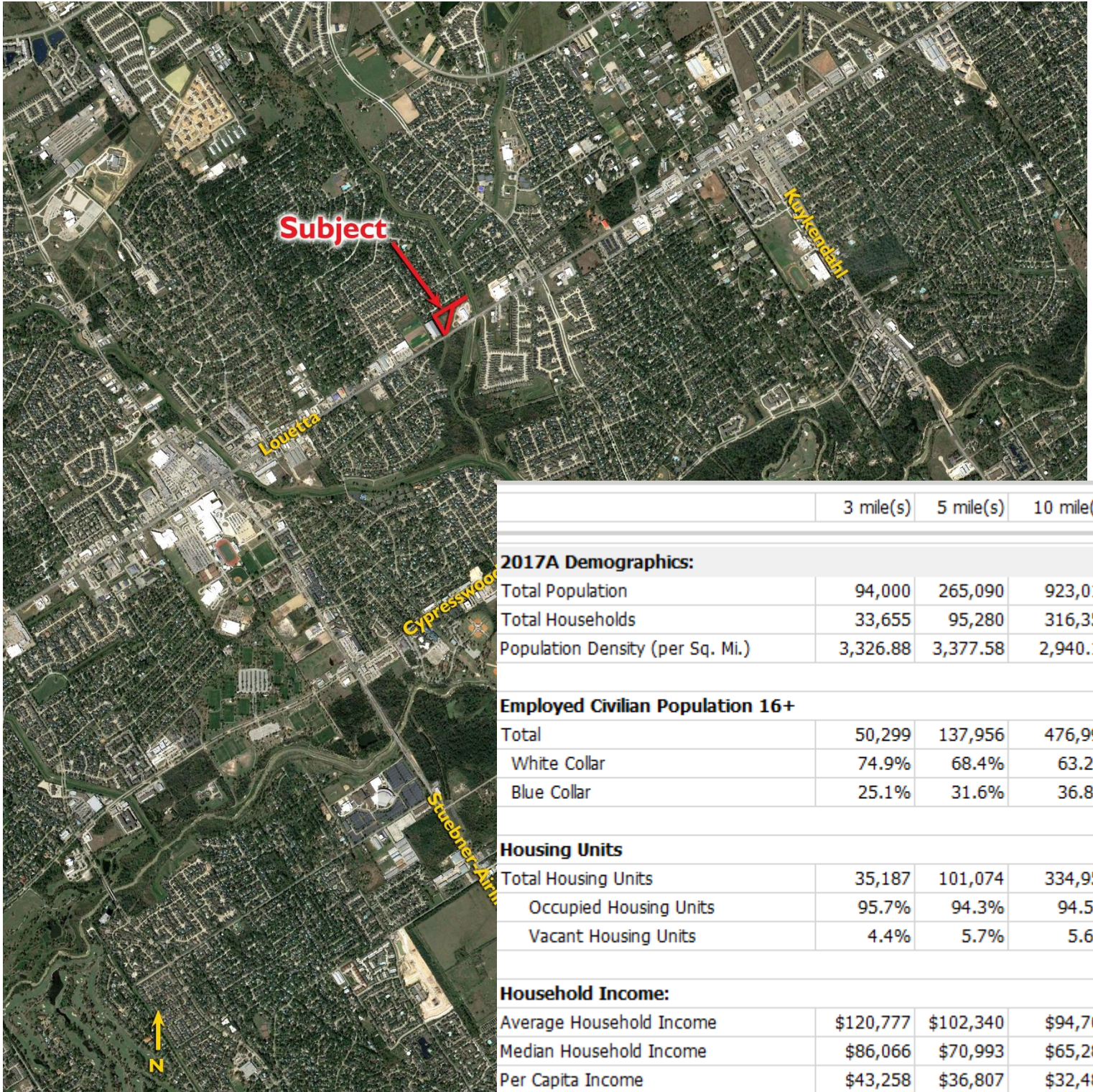
JAMES E. FOREMAN
Executive Director
(713) 963 2824
jim.foreman@cushwake.com

BEAU KALEEL, SIOR
Senior Director
(713) 963 2844
beau.kaleel@cushwake.com

ALLISON BERGMANN
Senior Associate
(713) 963 2865
allison.bergmann@cushwake.com

MICHAEL FOREMAN
Associate
(713) 963 2850
michael.foreman@cushwake.com

CUSHMAN & WAKEFIELD, INC.
Licensed Real Estate Brokers
1330 Post Oak Boulevard | Suite 2700
Houston, TX 77056
www.cushmanwakefield.com



	3 mile(s)	5 mile(s)	10 mile(s)
2017A Demographics:			
Total Population	94,000	265,090	923,015
Total Households	33,655	95,280	316,354
Population Density (per Sq. Mi.)	3,326.88	3,377.58	2,940.10
Employed Civilian Population 16+			
Total	50,299	137,956	476,991
White Collar	74.9%	68.4%	63.2%
Blue Collar	25.1%	31.6%	36.8%
Housing Units			
Total Housing Units	35,187	101,074	334,956
Occupied Housing Units	95.7%	94.3%	94.5%
Vacant Housing Units	4.4%	5.7%	5.6%
Household Income:			
Average Household Income	\$120,777	\$102,340	\$94,705
Median Household Income	\$86,066	\$70,993	\$65,286
Per Capita Income	\$43,258	\$36,807	\$32,487

JAMES E. FOREMAN

Executive Director
(713) 963 2824

jim.foreman@cushwake.com

BEAU KALEEL, SIOR

Senior Director
(713) 963 2844

beau.kaleel@cushwake.com

ALLISON BERGMANN

Senior Associate
(713) 963 2865

allison.bergmann@cushwake.com

MICHAEL FOREMAN

Associate
(713) 963 2850

michael.foreman@cushwake.com

CUSHMAN & WAKEFIELD, INC.

Licensed Real Estate Brokers
1330 Post Oak Boulevard | Suite 2700
Houston, TX 77056
www.cushmanwakefield.com