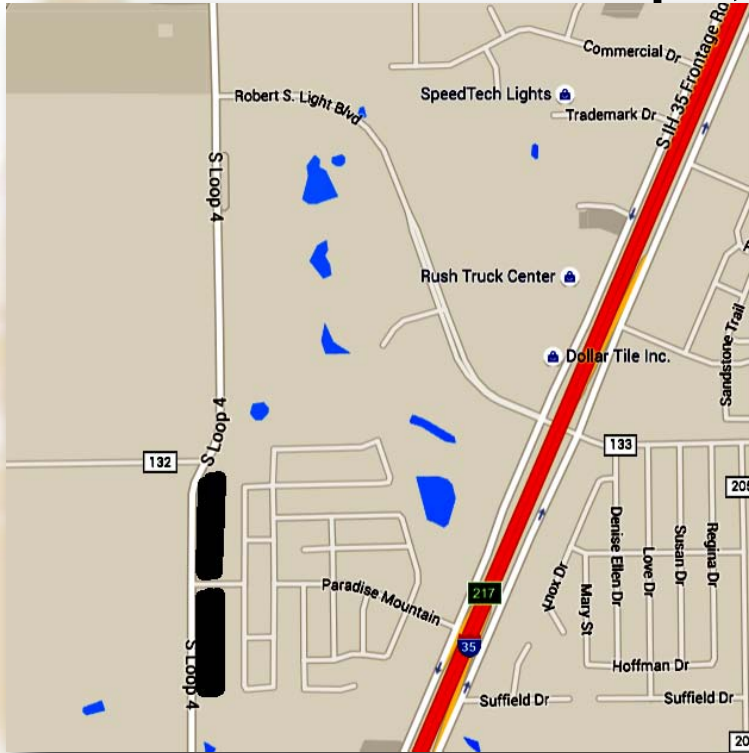


# FOR SALE ±12.83 ACRES

## 2099 S Loop 4, Buda, TX 78610



**LOCATION:** At intersection of Hope Pond Valley and South Loop 4 (FM 967 South, the entrance to the Meadows at Buda subdivision).

**TOPOGRAPHY:** See topographical maps.

**SIZE:** North Site: Approximately 6.55 Acres  
South Site: Approximately 6.28 Acres

**FLOOD HAZARD:** No portion of the property is in the FEMA floodplain.

**FRONTAGE/ACCESS:** North Site: Approximately 1072' on Loop 4  
South Site: Approximately 1074' on Loop 4

**PRICE:** \$4.50 per square foot

**UTILITIES:** All public utilities are available to the sites.

**ZONING:** R2/C2, Arterial Retail, Arterial Commercial/Office

**COMMENTS:** All utilities available, Commercial Zoning.

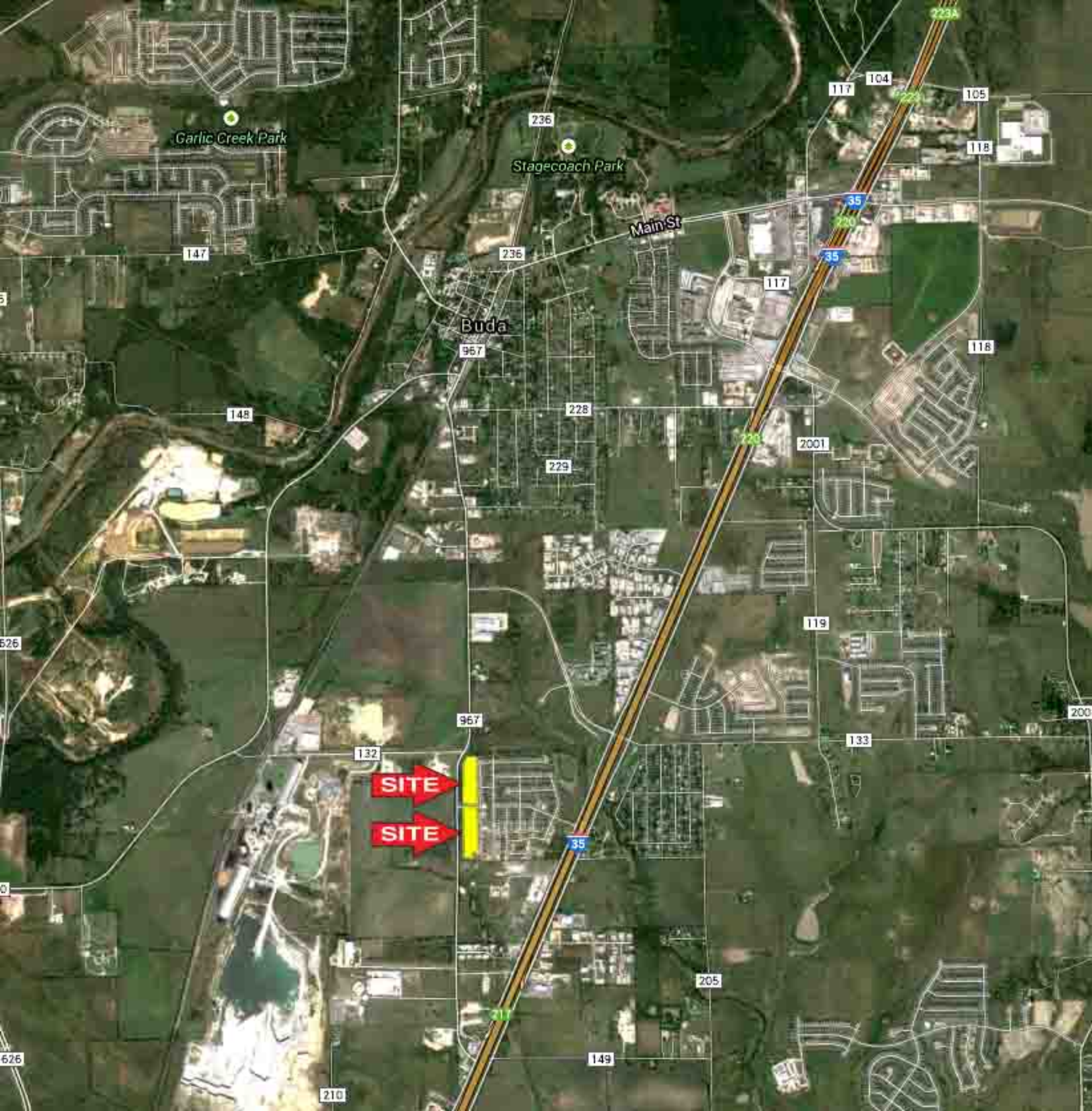
**McALLISTER & ASSOCIATES**  
REAL ESTATE SERVICES

**CONTACT Mark Pustka** Office: (512) 486-3737  
mark@matexas.com

**CONTACT Joe Willie McAllister** Office: (512) 472-2100  
joewillie@matexas.com

201 Barton Springs Road Austin, Texas 78704  
(512)472-2100 FAX: (512)472-2905

This property is presented subject to prior sale, change in price, or removal from the market without notice. All information shown in this brochure, while based upon information supplied by the owner and from other sources deemed to be reliable is not in any way warranted by McAllister & Associates or the owner of the property. Interested persons are encouraged to retain legal and technical consultants to advise them of any and all aspects of this property. This report is for your use as long as you have need of it, but at all times remains the property of McAllister & Associates. Under no circumstances is any of this report to be reproduced, copied or in any way duplicated without the express written consent of McAllister & Associates.



Garlic Creek Park

Stagecoach Park

Main St

Buda

SITE

SITE

147

236

236

967

117

104

105

118

35

35

117

118

148

236

228

229

2001

119

526

967

132

133

200

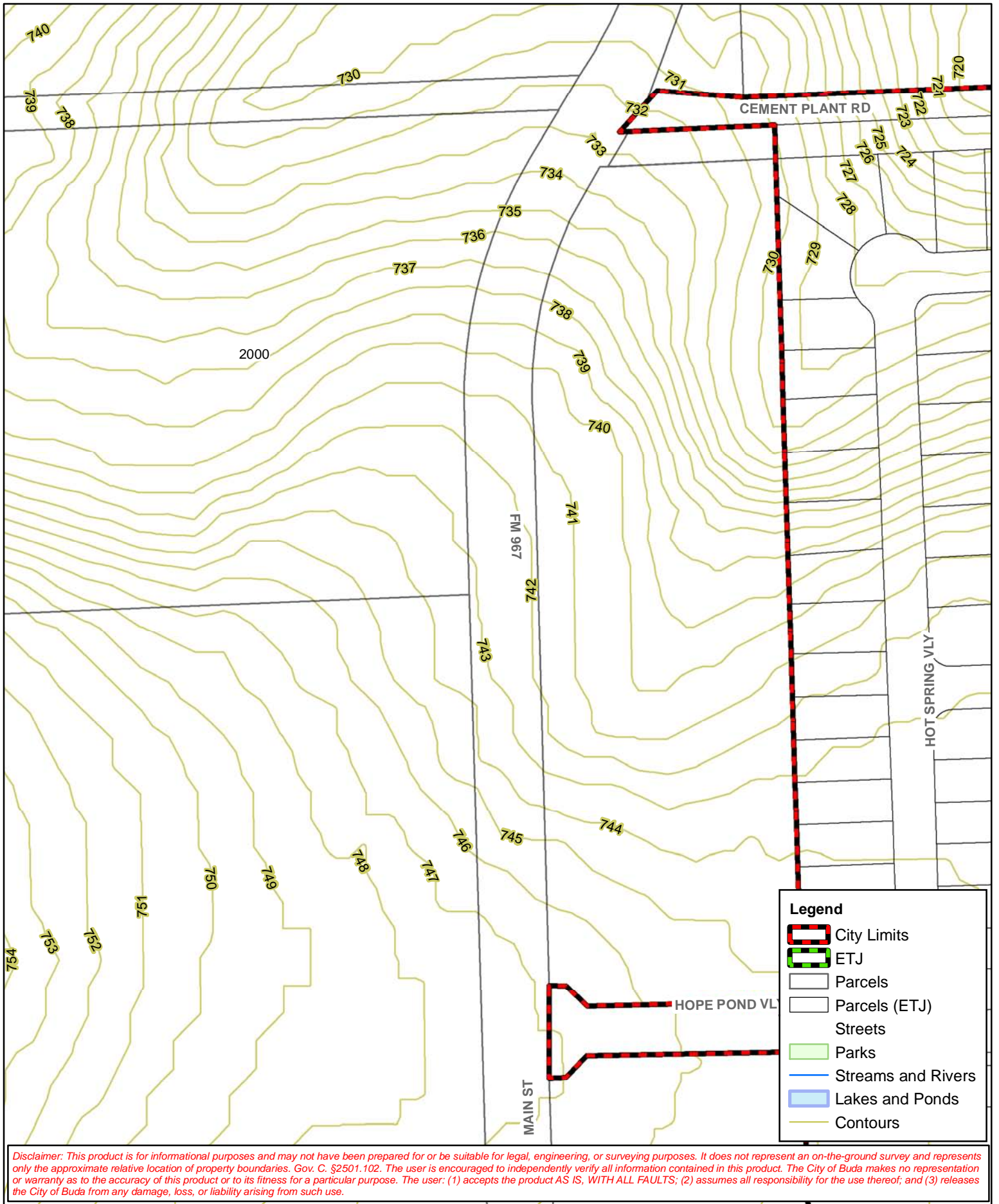
35

205

626

210

149



*Disclaimer: This product is for informational purposes and may not have been prepared for or be suitable for legal, engineering, or surveying purposes. It does not represent an on-the-ground survey and represents only the approximate relative location of property boundaries. Gov. C. §2501.102. The user is encouraged to independently verify all information contained in this product. The City of Buda makes no representation or warranty as to the accuracy of this product or to its fitness for a particular purpose. The user: (1) accepts the product AS IS, WITH ALL FAULTS; (2) assumes all responsibility for the use thereof; and (3) releases the City of Buda from any damage, loss, or liability arising from such use.*

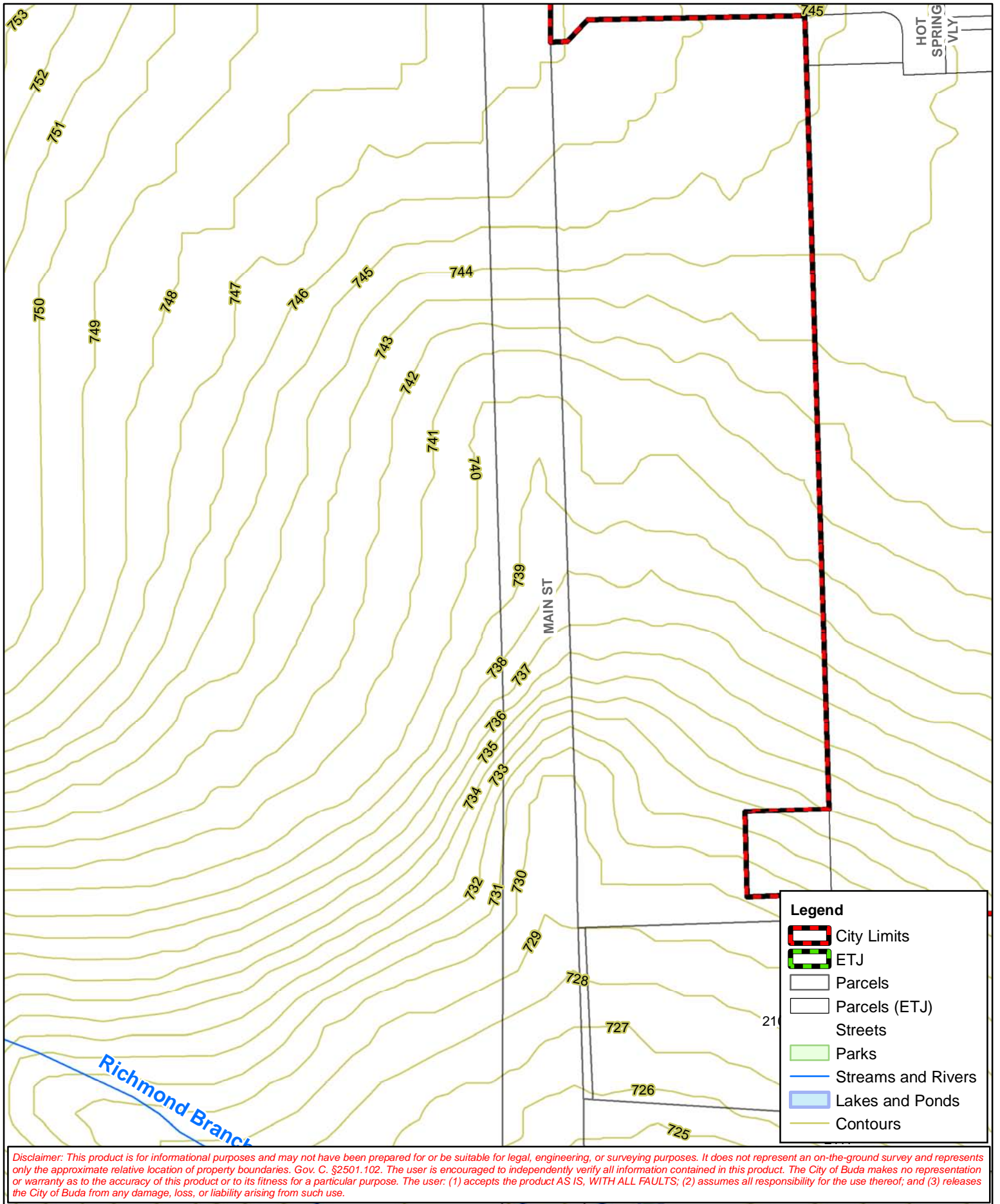


**City of Buda**  
 121 Main Street  
 PO Box 1218  
 Buda, Texas 78610  
 (512) 312-0084  
 www.ci.buda.tx.us

**Buda GIS Mapping**



1 inch = 147 feet





Disclaimer: This product is for informational purposes and may not have been prepared for or be suitable for legal, engineering, or surveying purposes. It does not represent an on-the-ground survey and represents only the approximate relative location of property boundaries. Gov. C. §2501.102. The user is encouraged to independently verify all information contained in this product. The City of Buda makes no representation or warranty as to the accuracy of this product or to its fitness for a particular purpose. The user: (1) accepts the product AS IS, WITH ALL FAULTS; (2) assumes all responsibility for the use thereof; and (3) releases the City of Buda from any damage, loss, or liability arising from such use.

