

# MURPHY SQUARE

sunnyvale, ca

MURPHY SQUARE

CENTRAL DOWNTOWN SUNNYVALE OFFICE  
**±2,479 - ±10,336 SQUARE FEET**  
FOR LEASE



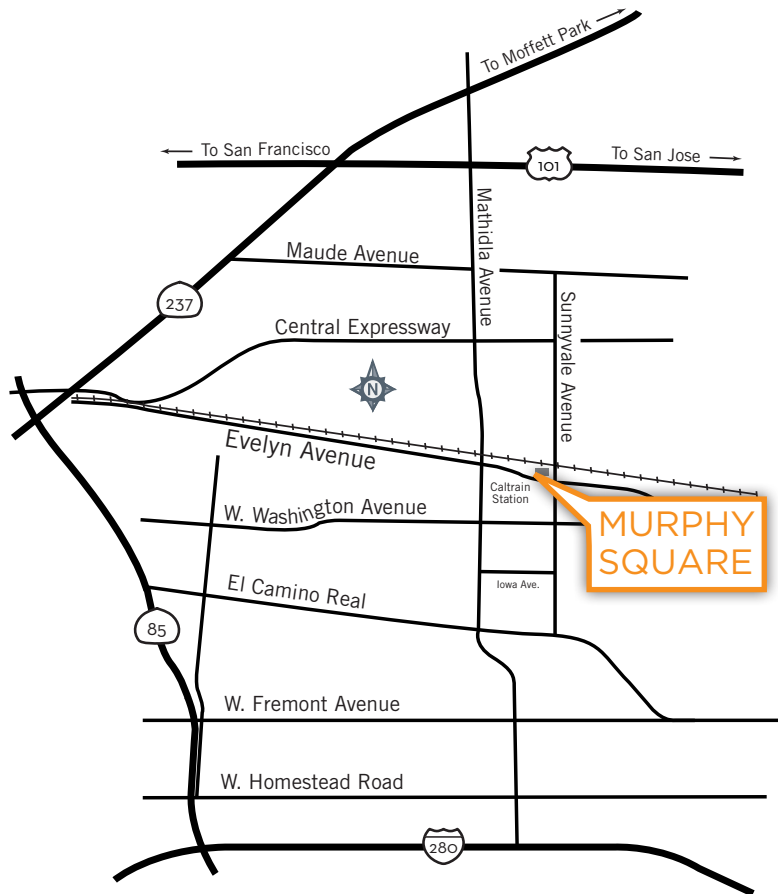
**CUSHMAN &  
WAKEFIELD**

**Jon DeCoite** | [jon.decoite@cushwake.com](mailto:jon.decoite@cushwake.com)

**Colin Feichtmeir** | [colin.feichtmeir@cushwake.com](mailto:colin.feichtmeir@cushwake.com)

# MURPHY SQUARE

sunnyvale, ca



## HIGHLIGHTS

- Central Downtown Sunnyvale Location
- Market Ready Improvements Complete
- Updated Landscaping
- Outdoor Patio Areas
- Adjacent to Sunnyvale Caltrain Station
- Walking Distance to Numerous Restaurants and Retail
- Close Proximity to Sunnyvale CityLine
- Convenient Access to Highways 101, 85, 237 & 280 and Central Expressway
- 2.63/1,000 Parking
- Reserved Parking for Tenants

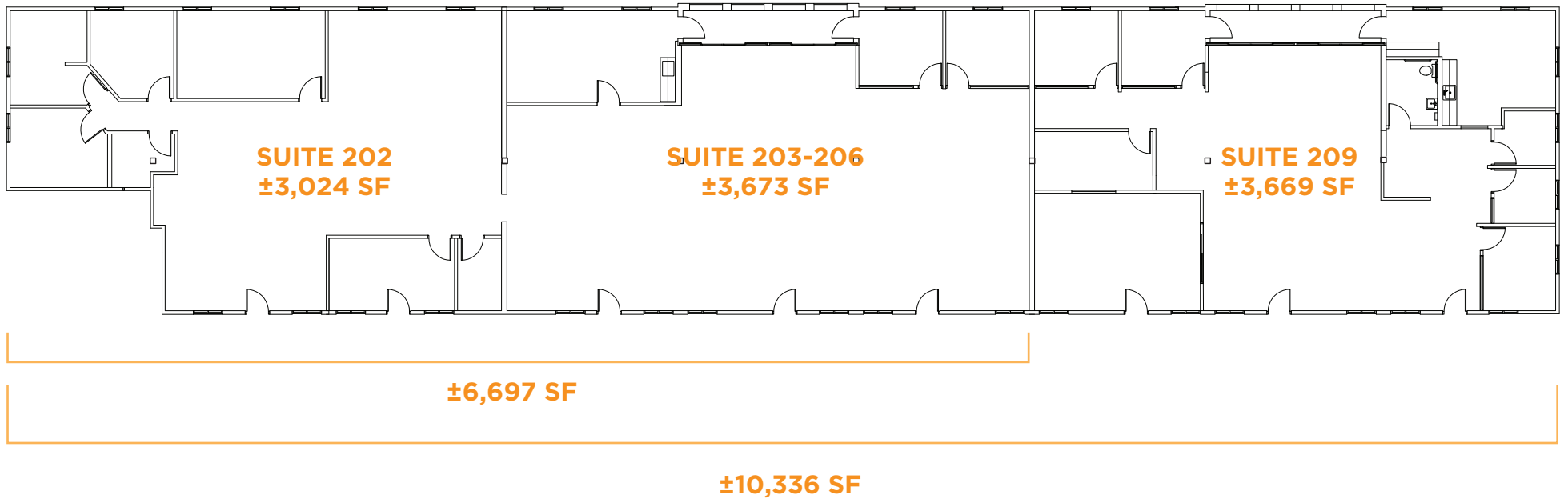


MURPHY  
SQUARE  
sunnyvale, ca





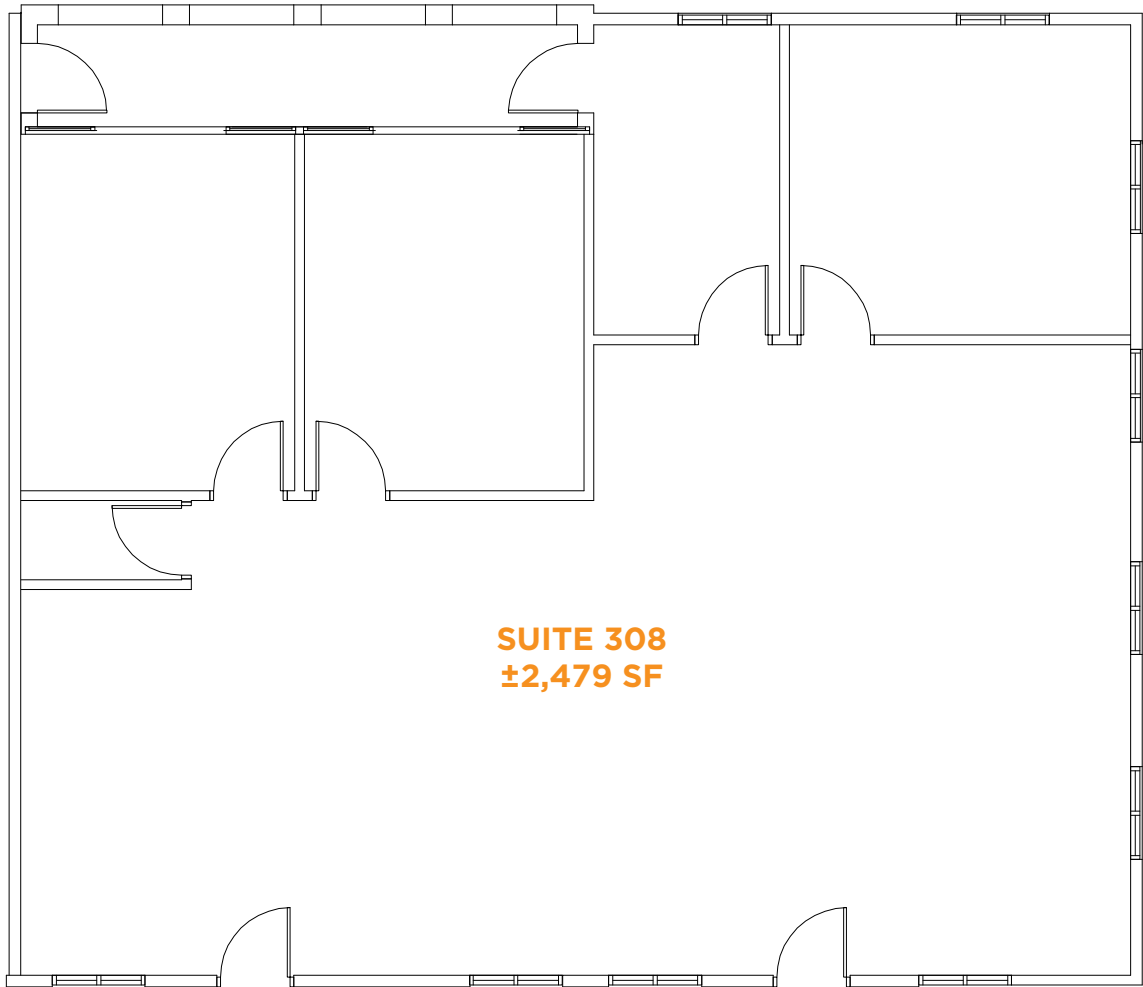
**SUITE 202, 203-206 & 209**



**MURPHY  
SQUARE**  
sunnyvale, ca

**SUITE 308: ±2,479**

Available 4/15/2020







FIREHOUSE GRILL & BREWERY  
 TAVERNA BISTRO  
 MEZZE TURKISH BBQ  
 K TEA  
 RIVER ROCK TAPROOM  
 CHEF YU CHINESE  
 METRO CITY  
 TUMERIC  
 CHOCOLATIER DESIREE  
 RAMEN SEAS  
 TAO TAO CHINESE  
 LILY'S MAC'S

THE OXFORD  
 VINO VINO  
 POKI BOWL  
 DISH DASH  
 BEAN SCENE CAFE  
 GUMBA'S ITALIAN  
 BELLA ROMA  
 SIAM TASTE THAI  
 ROBERTO'S CANTINA  
 ROK BISTRO  
 IL POSTALE  
 COFFEE & MORE

ORANGETHEORY FITNESS  
 STARBUCKS  
 NOM BURBER  
 TAP'T  
 THE PROLIFIC OVEN  
 CITY PLACE WINE BAR  
 BEACH HUT DELI



±268,245 OF FUTURE RETAIL

MACY'S



PHOEVER  
 FLYWHEEL SPORTS  
 KABEL AFGHAN CUISINE

PHILZ COFFEE  
 VITALITY BOWL  
 THE DON'S DELI  
 SAJJ MEDITERRANEAN

MURPHY SQUARE

W EVELYN AVE



S MATHILDA AVE

ADJACENT TO SUNNYVALE CALTRAIN & MURPHY SQUARE RETAIL





# MURPHY SQUARE

---

sunnyvale, ca

**Jon DeCoite**

[jon.decoite@cushwake.com](mailto:jon.decoite@cushwake.com)

+1 408 615 3408

LIC #: 01471300

**Colin Feichtmeir**

[colin.feichtmeir@cushwake.com](mailto:colin.feichtmeir@cushwake.com)

+1 408 615 3443

LIC #: 01298061



**CUSHMAN &  
WAKEFIELD**