

±24,500 SF AVAILABLE  
**5860 OWENS DRIVE**  
PLEASANTON, CALIFORNIA 94588



## FOR LEASE

**±24,500 RSF 3RD FLOOR**  
SEEKING OFFICE TENANT(S) NOW



## Property Features

- **Class A Building** - Located adjacent to BART
- **Superb parking availability on-site** offers parking ratio of 4.8/1,000 SF leased on surface lots and in garage
- **Great views, dramatic glass line, modern finishes, high-end common areas, common conference/training room, on site deli-cafe coming soon**



# 5860 OWENS DRIVE

PLEASANTON, CALIFORNIA

FOR LEASE | ENTIRE 3RD FLOOR



VIEWES FROM THE BUILDING



**SITE RENDERING/  
PARKING 4.8/1000**

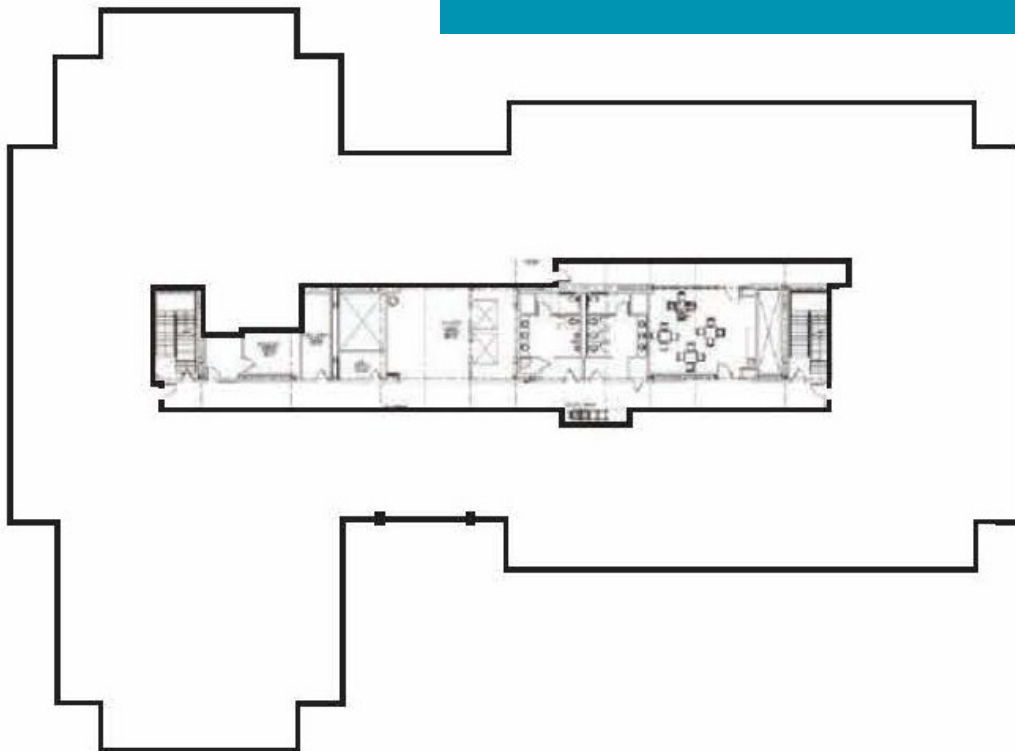
## FLOOR PLAN

**3RD FLOOR**  
"Typical"

Eugene McGrane  
Managing Director  
+1 925 951 5023  
eugene.mcgrane@cushwake.com

John Fennell  
Senior Director  
+1 925 274 2802  
john.fennell@cushwake.com

Drew Hyjer  
Associate  
+1 925 627 2483  
drew.hyjer@cushwake.com



- Extensive Glass Line with Excellent Views
- Open Floor Plate conducive to Efficient Space Planning
- Market Rent and Tenant Improvement Packages
- ±24,500 RSF - available NOW

