



MEL'S MINI MALL FOR LEASE

1114 12th Street
SF AVAILABLE: 700 - 1,400 SF

PROPERTY HIGHLIGHTS

- Good visibility on 12th Street
- Ample parking
- End cap retail space with patio
- Spaces Can be Combined
- Tenant is responsible for separately metered utilities



AVAILABLE SPACE
2 SUITES AVAILABLE
1114 | 700 SF
1116 | 700 SF



ASKING RATE
Contact Agents



INTERMOUNTAIN
COMMERCIAL REAL ESTATE

DARIN BURRELL
darin@icrellc.com
(208) 286-2260 office
(208) 860-0332 cell

SETH MCCORMACK
seth@icrellc.com
(208) 286-2272 office
(208) 918-1030 cell



EXECUTIVE SUMMARY

Available SF: **700 - 1,400 SF**

Building Class: **B**

Lease Rate: **Contact Agents**

Market: **Nampa**

Lease Type: **Modified Gross**

Lot Size: **0.160 Acres**

Suite 1114 | **700 SF** | CONTACT AGENTS | **RETAIL**

Suite 1116 | **700 SF** | CONTACT AGENTS | **RETAIL**

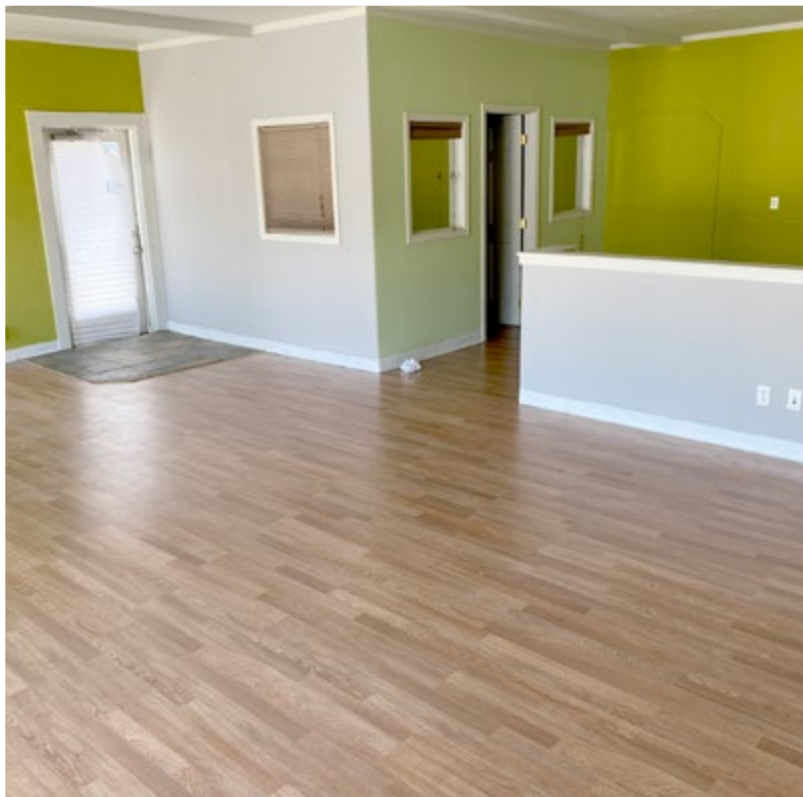
**Suites can be combined for total of 1,400 SF.*



INTERMOUNTAIN
COMMERCIAL REAL ESTATE

DARIN BURRELL
darin@icrellc.com
(208) 286-2260 office
(208) 860-0332 cell

SETH MCCORMACK
seth@icrellc.com
(208) 286-2272 office
(208) 918-1030 cell



INTERMOUNTAIN
COMMERCIAL REAL ESTATE

DARIN BURRELL
darin@icrellc.com
(208) 286-2260 office
(208) 860-0332 cell

SETH MCCORMACK
seth@icrellc.com
(208) 286-2272 office
(208) 918-1030 cell

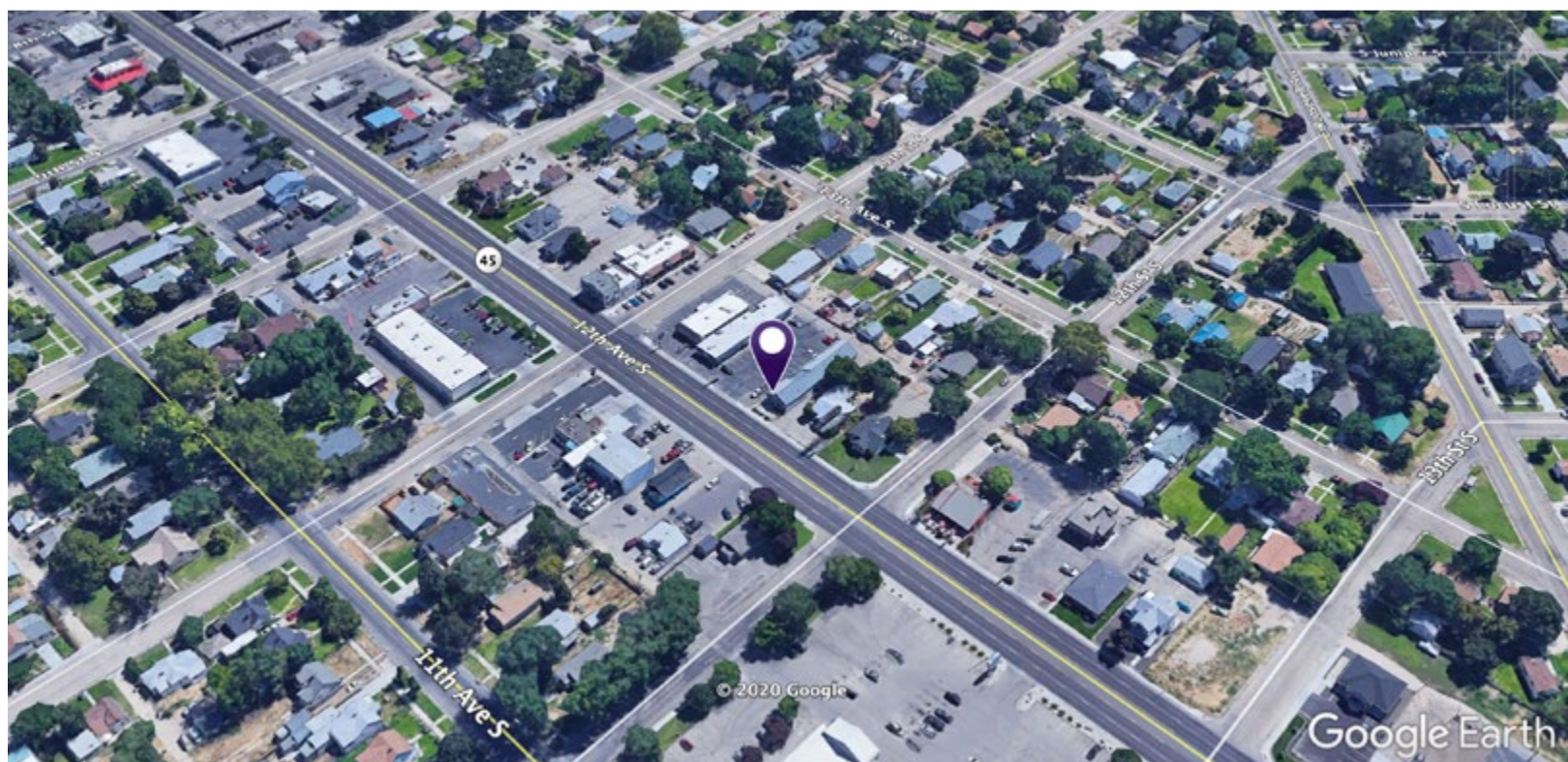
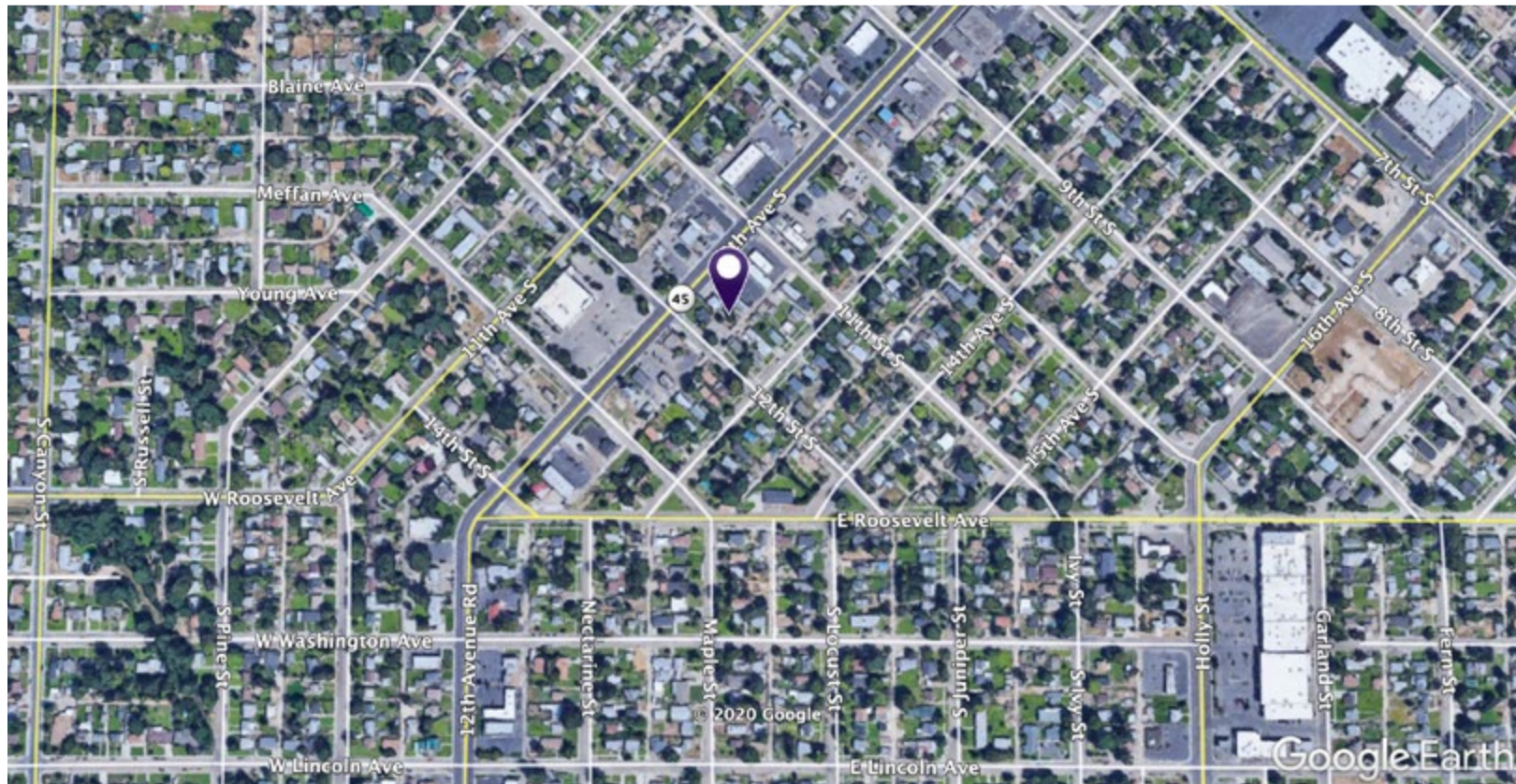


INTERMOUNTAIN
COMMERCIAL REAL ESTATE

DARIN BURRELL
darin@icrellc.com
(208) 286-2260 office
(208) 860-0332 cell

SETH MCCORMACK
seth@icrellc.com
(208) 286-2272 office
(208) 918-1030 cell

MEL'S MINI MALL | 1114 12TH AVE S, NAMPA



INTERMOUNTAIN
COMMERCIAL REAL ESTATE

DARIN BURRELL
darin@icrellc.com
(208) 286-2260 office
(208) 860-0332 cell

SETH MCCORMACK
seth@icrellc.com
(208) 286-2272 office
(208) 918-1030 cell

www.icreboise.com | 380 E. Parkcenter Boulevard Suite 290, Boise, ID 83706 | (208) 429-8603 office | (208) 429-8604 fax

The information has been obtained from sources believed reliable and, while we do not doubt its reliability, ICRE has not verified it and makes no guarantees, warranties or representations, expressed or implied, as to its accuracy. All interested parties should conduct their own independent investigation and rely on those results.