

For Lease

Kissimmee Professional Village - Phase II

1000-1150 KEVSTIN DR., KISSIMMEE, FL 34744



LISTING DATA

Available SF: 1,100 - 4,400 SF

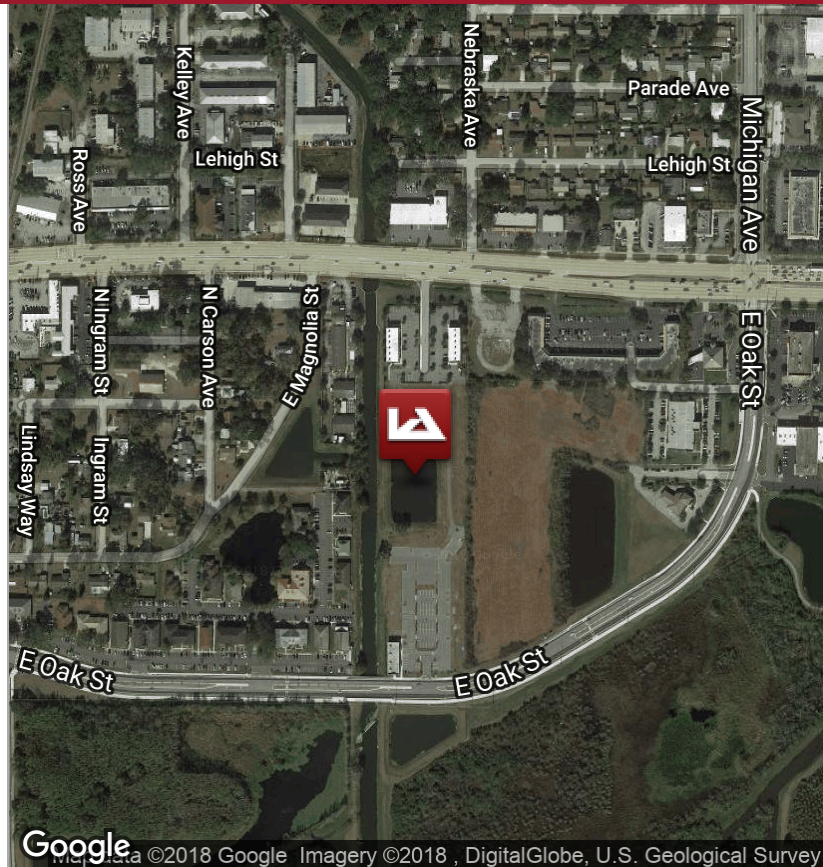
Comments: Oak Street Project, LLC has retained Lee & Associates - Central Florida, LLC as its exclusive agent in the lease of Kissimmee Professional Village - Phase II 1000-1150 Kevstin Drive, Kissimmee, FL 34741, located directly on East Oak Street.

Kissimmee Professional Village - Phase II, at completion, will feature seven (7) single story, free standing medical & professional office buildings comprising 30,800 sf in a park setting. Individual units can be provided starting at 1,100 sf with entire buildings being provided as large as 4,400 SF contiguous.

It is the developers intent to start spec construction on Buildings 1040 & 1080 with a planned delivery for the 4th quarter of 2018.

ECONOMIC DATA

Lease Rate: \$18.00 SF/yr (NNN)



1017 E. SOUTH STREET
ORLANDO, FL 32801

For more information contact:

Jason Bantel, CCIM
jbantel@lee-associates.com
D: 321.281.8509

We obtained the information above from sources we believe to be reliable. However, we have not verified its accuracy and make no guarantee, warranty or representation about it. It is submitted subject to the possibility of errors, omissions, change of price, rental or other conditions, prior sale, lease or financing, or withdrawal without notice. We include projections, opinions, assumptions or estimates for example only, and they may not represent current or future performance of the property. You and your tax and legal advisors should conduct your own investigation of the property and transaction.

LeeCFL.com



P: 321.281.8500

For Lease

Kissimmee Professional Village - Phase II

1000-1150 KEVSTIN DR., KISSIMMEE, FL 34744

Lease Rate: \$18.00 SF/YR (NNN) **Total Space:** 1,100 - 4,400 SF

SPACE	SPACE USE	LEASE RATE	LEASE TYPE	SIZE (SF)	TERM
1040 Kevstin Dr	Office Building	\$18.00 SF/YR	NNN	1,100 - 4,400 SF	Negotiable
1080 Kevstin Dr	Office Building	\$18.00 SF/YR	NNN	1,100 - 4,400 SF	Negotiable
1120 Kevstin Dr	Office Building	\$18.00 SF/YR	NNN	1,100 - 4,400 SF	Negotiable
1081 Kevstin Dr	Office Building	\$18.00 SF/YR	NNN	4,400 SF	Negotiable
1041 Kevstin Dr	Office Building	\$18.00 SF/YR	NNN	4,400 SF	Negotiable
1001 Kevstin Dr	Office Building	\$18.00 SF/YR	NNN	4,400 SF	Negotiable



1017 E. SOUTH STREET
ORLANDO, FL 32801

For more information contact:

Jason Bantel, CCIM
jbantel@lee-associates.com
D: 321.281.8509

We obtained the information above from sources we believe to be reliable. However, we have not verified its accuracy and make no guarantee, warranty or representation about it. It is submitted subject to the possibility of errors, omissions, change of price, rental or other conditions, prior sale, lease or financing, or withdrawal without notice. We include projections, opinions, assumptions or estimates for example only, and they may not represent current or future performance of the property. You and your tax and legal advisors should conduct your own investigation of the property and transaction.

LeeCFL.com

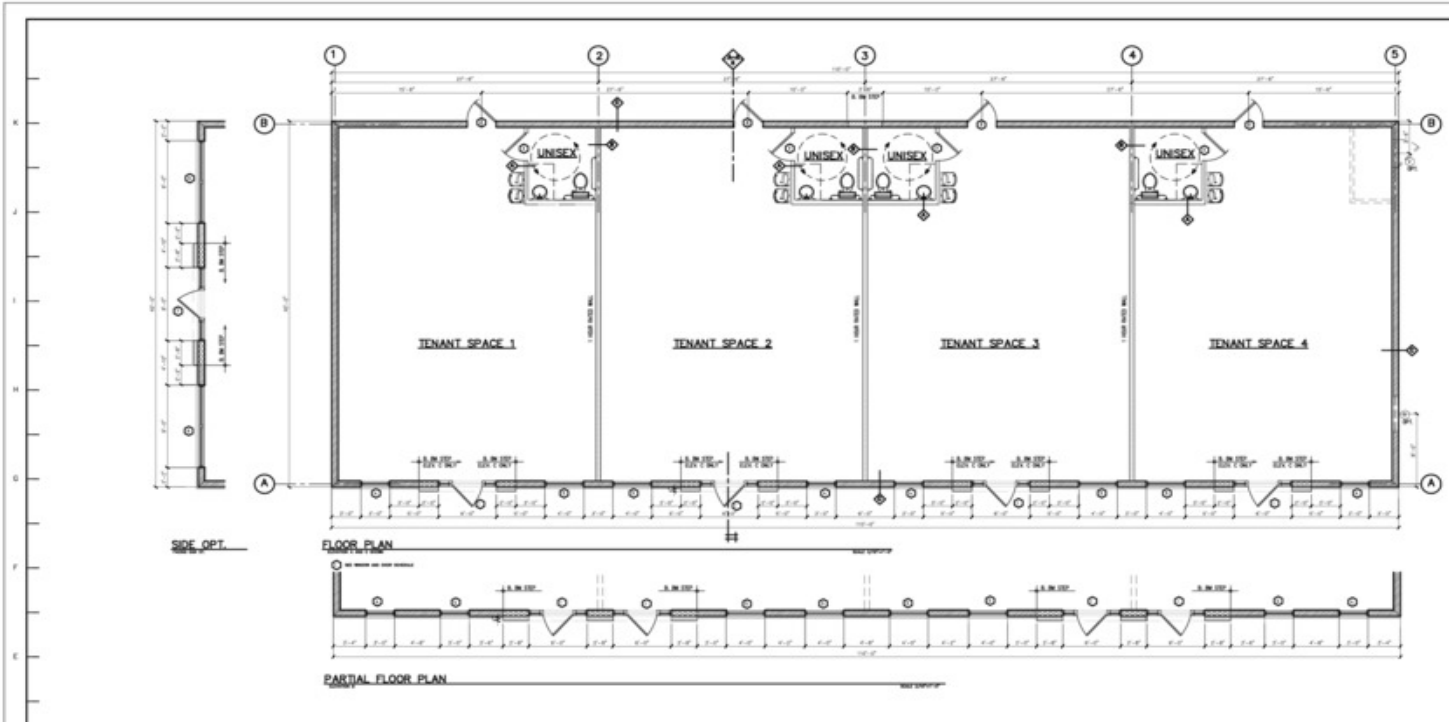


P: 321.281.8500

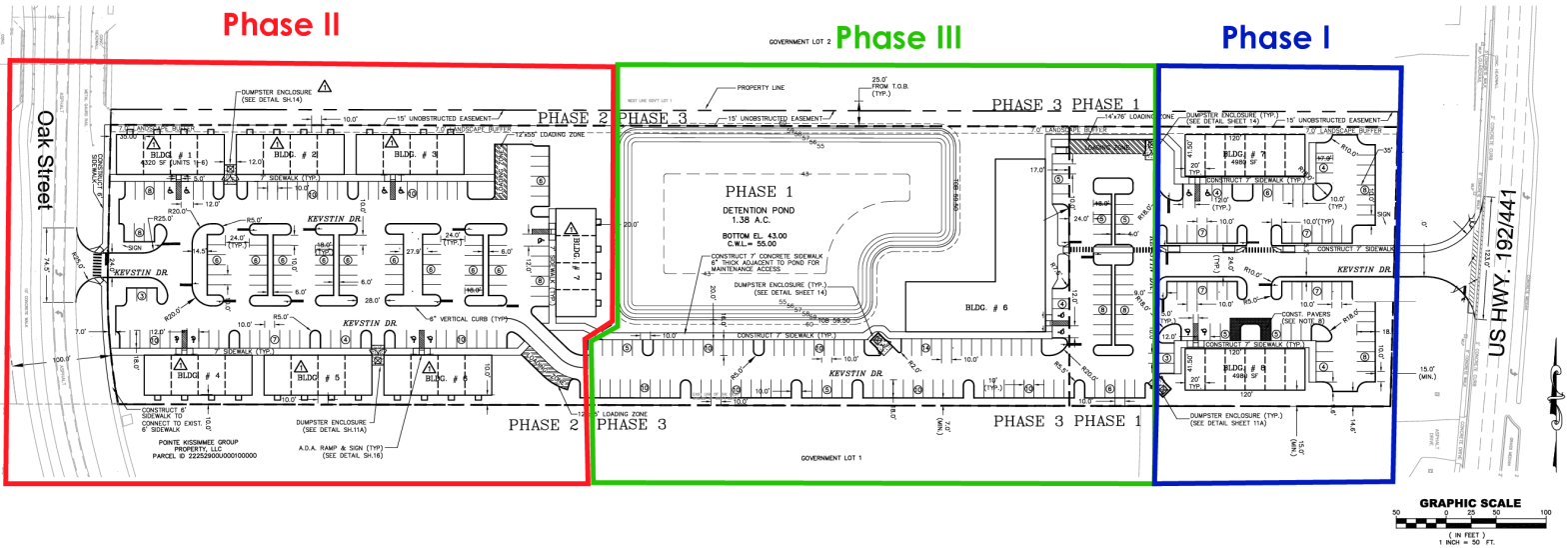
For Lease

Kissimmee Professional Village - Phase II

1000-1150 KEVSTIN DR., KISSIMMEE, FL 34744



1 FLOOR PLAN - PHASE II
Kissimmee Professional Village



2 OVERALL SITE PLAN
Kissimmee Professional Village



For more information contact:
 Jason Bantel, CCIM
 jbantel@lee-associates.com
 D: 321.281.8509

LeeCFL.com



1017 E. SOUTH STREET
 ORLANDO, FL 32801

We obtained the information above from sources we believe to be reliable. However, we have not verified its accuracy and make no guarantee, warranty or representation about it. It is submitted subject to the possibility of errors, omissions, changes of price, rental or other conditions, prior sale, lease or financing, or withdrawal without notice. We include projections, opinions, assumptions or estimates for example only, and they may not represent current or future performance of the property. You and your tax and legal advisors should conduct your own investigation of the property and transaction.

P: 321.281.8500