

PRIME RETAIL SPACE ADJACENT TO KOHL'S

Knightsdale, NC 27545 | 302 Hinton Oaks Blvd | Knightsdale Blvd & Hinton Oaks Blvd | #1307



- Located at intersection of I-540 and US 64 (Combined 102,000 AADT)
- Free Standing location in Wake County's dominant eastern retail node.
- Co-Tenants include: Home Depot, T.J. Maxx, Best Buy, Target, Ross Dress For Less, Michaels, Petco, Lowe's, Walmart, PetSmart, and others.
- Trade area pulls from both Raleigh and bedroom communities to the east.

DEMOGRAPHICS	1 MILE	3 MILES	5 MILES	TRAFFIC COUNTS	
2018 Population Density	5,654	39,968	107,918	Knightsdale Blvd	36,000 AADT
2018 Daytime Population	3,631	13,118	54,696	I-540	59,000 AADT
2018 Average HH Income	\$76,074	\$78,523	\$73,082		
2018 Median HH Income	\$67,936	\$66,714	\$59,146		

AVAILABLE SF:
24,200 SF

FRONTAGE:
APPROX 98'3"

ZONING:
COMMERCIAL

RATES:
CALL FOR DETAILS

AREA ANCHORS



FOR MORE INFORMATION, CONTACT EXCLUSIVE AGENT(S):

JEFF NIMMER, CCIM • jeff.nimmer@tscg.com • 919.380.8041

TYLER QUINN • tyler.quinn@tscg.com • 919.380.8041

TAYLOR DROUILLARD • taylor.drouillard@tscg.com • 919.380.8041

Demographics: Esri 2018 No warranty expressed or implied has been made as to the accuracy of the information provided herein, no liability assumed for error or omissions.



PRIME RETAIL SPACE ADJACENT TO KOHL'S

Knightdale, NC 27545 | 302 Hinton Oaks Blvd | Knightdale Blvd & Hinton Oaks Blvd | #1307



FOR MORE INFORMATION, CONTACT EXCLUSIVE AGENT(S):

JEFF NIMMER, CCIM • jeff.nimmer@tscg.com • 919.380.8041

TYLER QUINN • tyler.quinn@tscg.com • 919.380.8041

TAYLOR DROUILLARD • taylor.drouillard@tscg.com • 919.380.8041

TSCG

Stan Johnson Co.
THE NET LEASE AUTHORITY™

CHAINLINKS
RETAIL ADVISORS

Demographics: Esri 2018 No warranty expressed or implied has been made as to the accuracy of the information provided herein, no liability assumed for error or omissions.

PRIME RETAIL SPACE ADJACENT TO KOHL'S

Knightdale, NC 27545 | 302 Hinton Oaks Blvd | Knightdale Blvd & Hinton Oaks Blvd | #1307



FOR MORE INFORMATION, CONTACT EXCLUSIVE AGENT(S):

JEFF NIMMER, CCIM • jeff.nimmer@tscg.com • 919.380.8041

TYLER QUINN • tyler.quinn@tscg.com • 919.380.8041

TAYLOR DROUILLARD • taylor.drouillard@tscg.com • 919.380.8041

Demographics: Esri 2018 No warranty expressed or implied has been made as to the accuracy of the information provided herein, no liability assumed for error or omissions.

TSCG

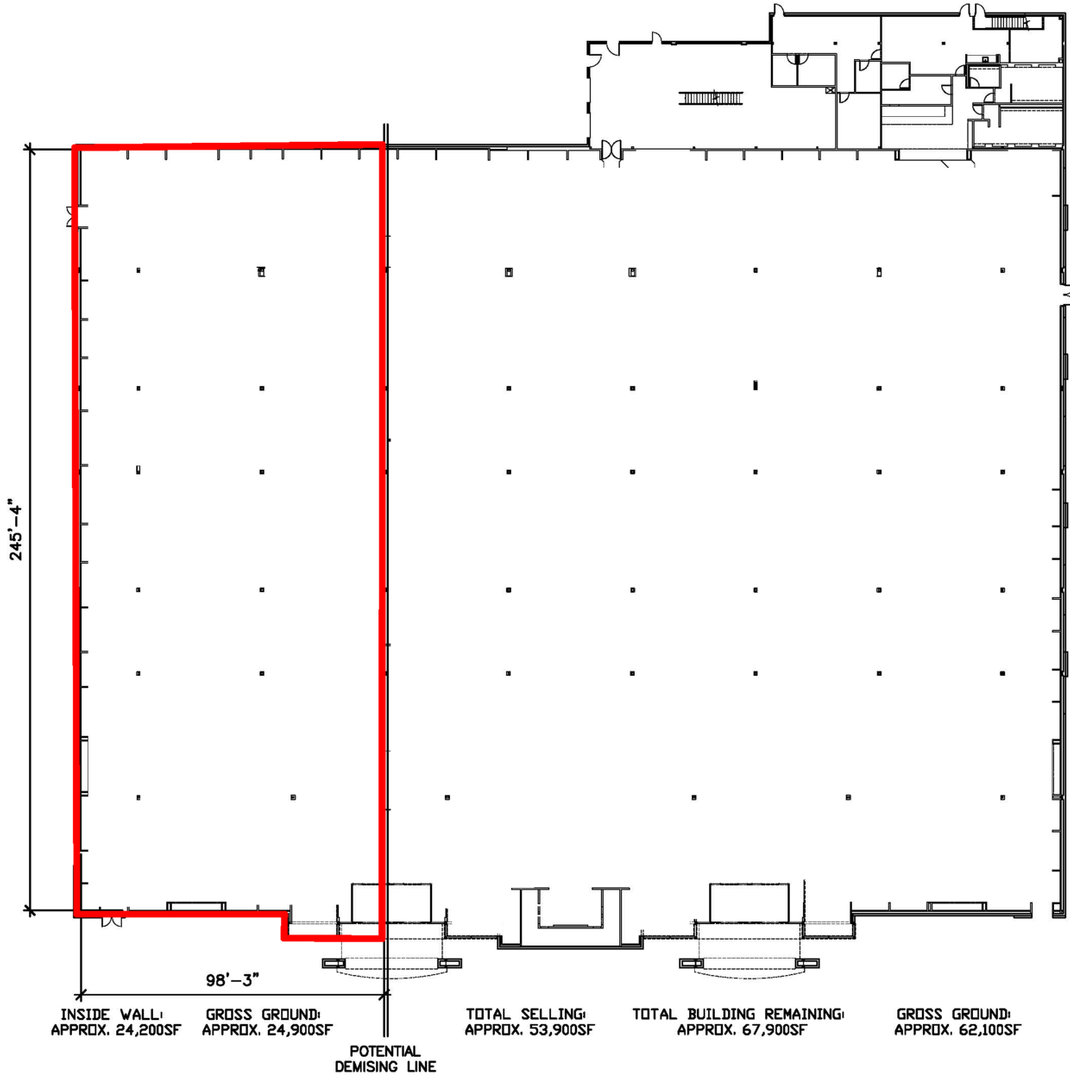
Stan Johnson Co.
THE NET LEASE AUTHORITY™

CHAINLINKS
RETAIL ADVISORS

PRIME RETAIL SPACE ADJACENT TO KOHL'S

Knightdale, NC 27545 | 302 Hinton Oaks Blvd | Knightdale Blvd & Hinton Oaks Blvd | #1307

#11307 Knightdale, NC
Updated 4/19/18



FOR MORE INFORMATION, CONTACT EXCLUSIVE AGENT(S):
JEFF NIMMER, CCIM • jeff.nimmer@tscg.com • 919.380.8041
TYLER QUINN • tyler.quinn@tscg.com • 919.380.8041
TAYLOR DROUILLARD • taylor.drouillard@tscg.com • 919.380.8041



Demographics: Esri 2018 No warranty expressed or implied has been made as to the accuracy of the information provided herein, no liability assumed for error or omissions.