

19100 LAHSER ROAD  
DETROIT, MICHIGAN

RETAIL FOR SALE OR LEASE  
1,535 Square Feet Available



**SIGNATURE  
ASSOCIATES**  
KNOW SIGNATURE | KNOW RESULTS

**PRICE REDUCED**



## PROPERTY FEATURES

- 1,535 available square feet
- Zoned B-4
- 8 parking spaces
- Lease Rate: \$2,500/month NNN
- Sale Price: \$299,000 (\$194.79/sq. ft.)

**Comments:** Excellent opportunity available for lease or sale. Former Burger King restaurant located at the hard-sigaled corner lot of 7 Mile and Lahser Roads. Great site for many uses!



For more information, please contact:

**MARVIN PETROUS**  
(248) 359 0647  
mpetrous@signatureassociates.com

**SIGNATURE ASSOCIATES**  
One Towne Square, Suite 1200  
Southfield, MI 48076  
www.signatureassociates.com

# 19100 Lahser Road – Detroit, Michigan

Retail For Sale or Lease

1,535  
Square Feet  
AVAILABLE

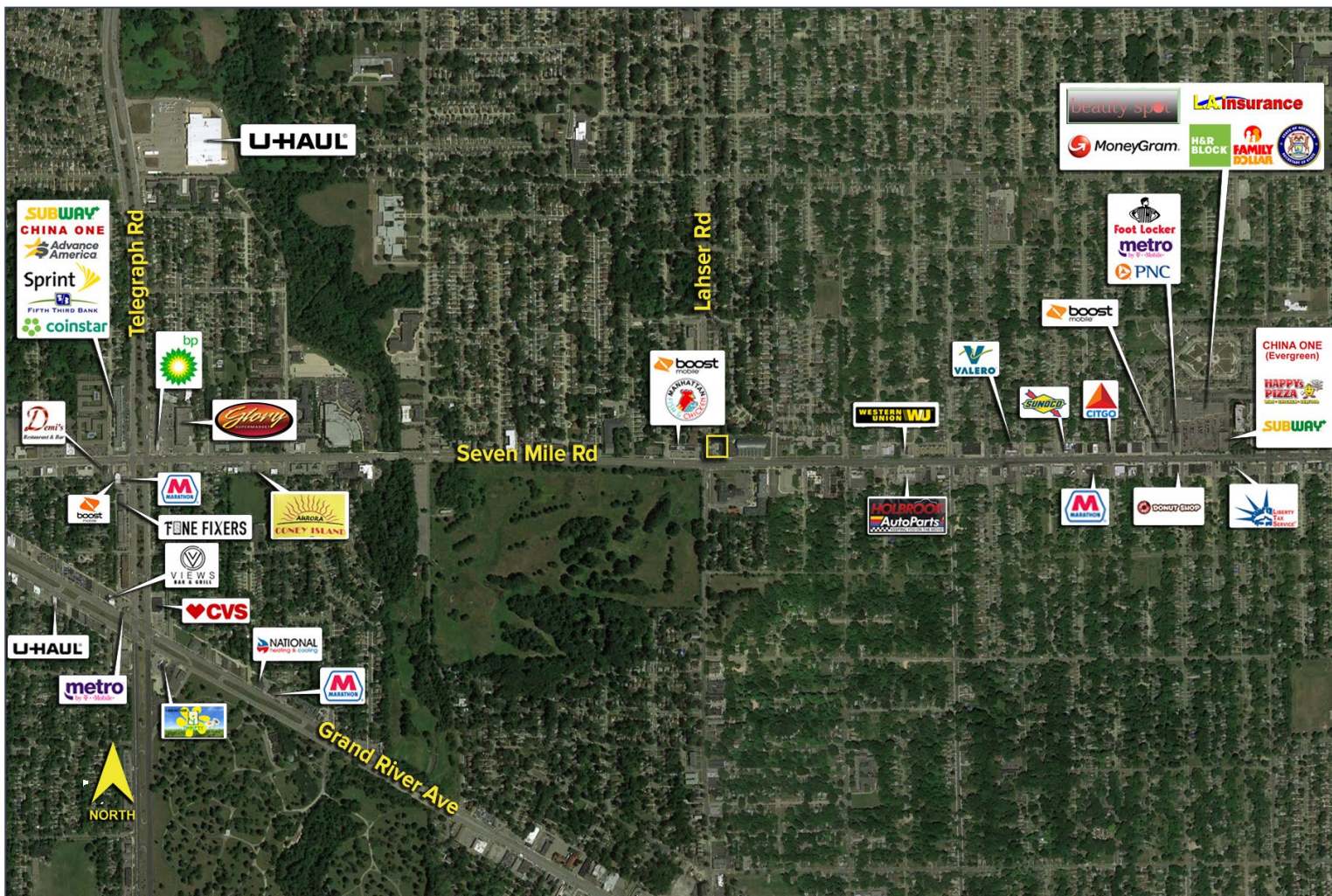


## DEMOGRAPHICS

	POPULATION	MED. HH INCOME
1 MILE	17,307	\$33,987
3 MILE	114,763	\$43,125
5 MILE	312,823	\$48,071

## TRAFFIC COUNTS (TWO-WAY)

15,603	Lahser Rd. N. of 7 Mile 2-Way
20,332	Lahser Rd. S. of 7 Mile 2-Way
17,885	7 Mile W. of Lahser Rd. 2-Way
17,765	7 Mile E. of Lahser Rd. 2-Way



For more information, please contact:

**MARVIN PETROUS**

(248) 359 0647

mpetrous@signatureassociates.com

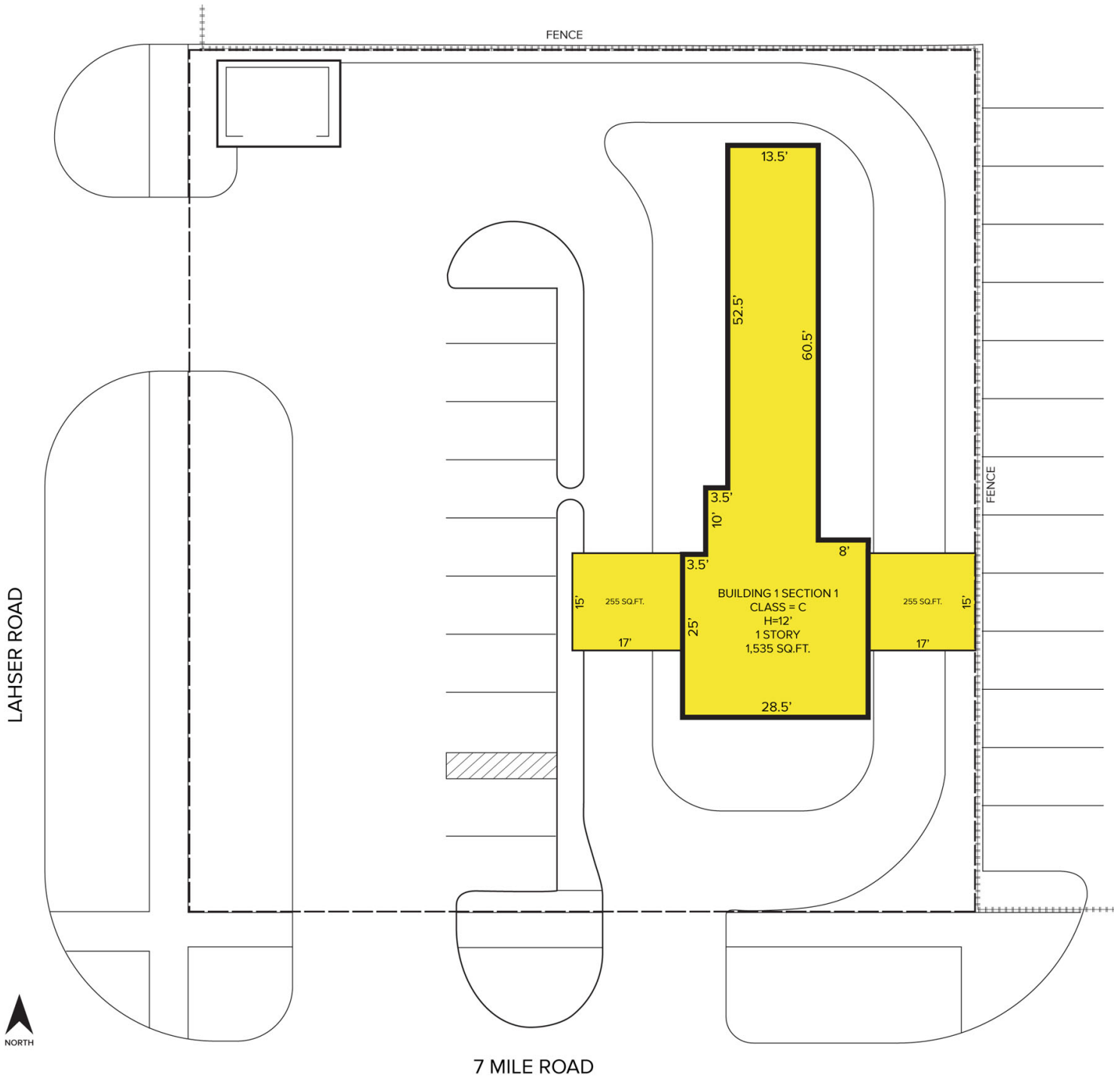
**SIGNATURE ASSOCIATES**

One Towne Square, Suite 1200

Southfield, MI 48076

www.signatureassociates.com

Site Plan



For more information, please contact:

**MARVIN PETROUS**  
(248) 359 0647  
mpetrous@signatureassociates.com

**SIGNATURE ASSOCIATES**  
One Towne Square, Suite 1200  
Southfield, MI 48076  
www.signatureassociates.com