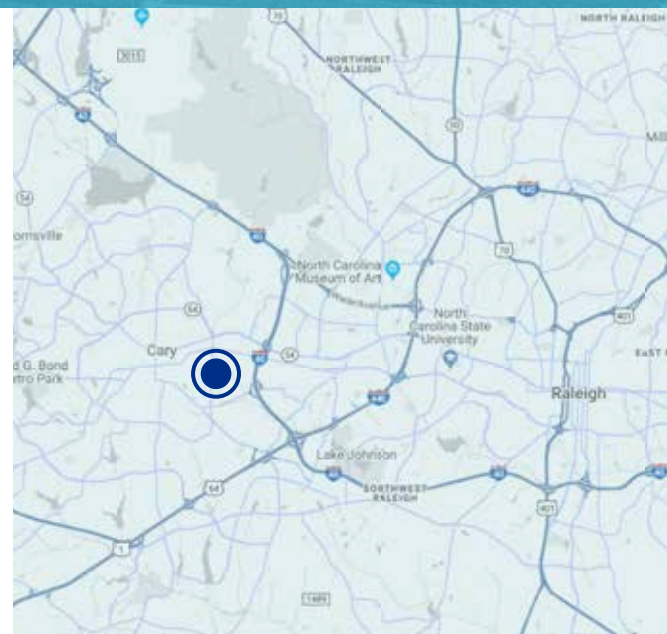


1150 SE MAYNARD RD
CARY, NC 27511



PROPERTY INFORMATION

- Conveniently located to NC-54 and Cary Towne Center
- Nearby restaurants, shopping and banks
- Private office setting
- Full interior and exterior renovations
- Quiet and professional atmosphere
- Large atrium lobby
- Suite 110: 3,150 SF - Available Immediately
- Suite 220: 1,575 SF - Available December 31, 2020
- Lease Rate: \$18.00/SF, Full Service

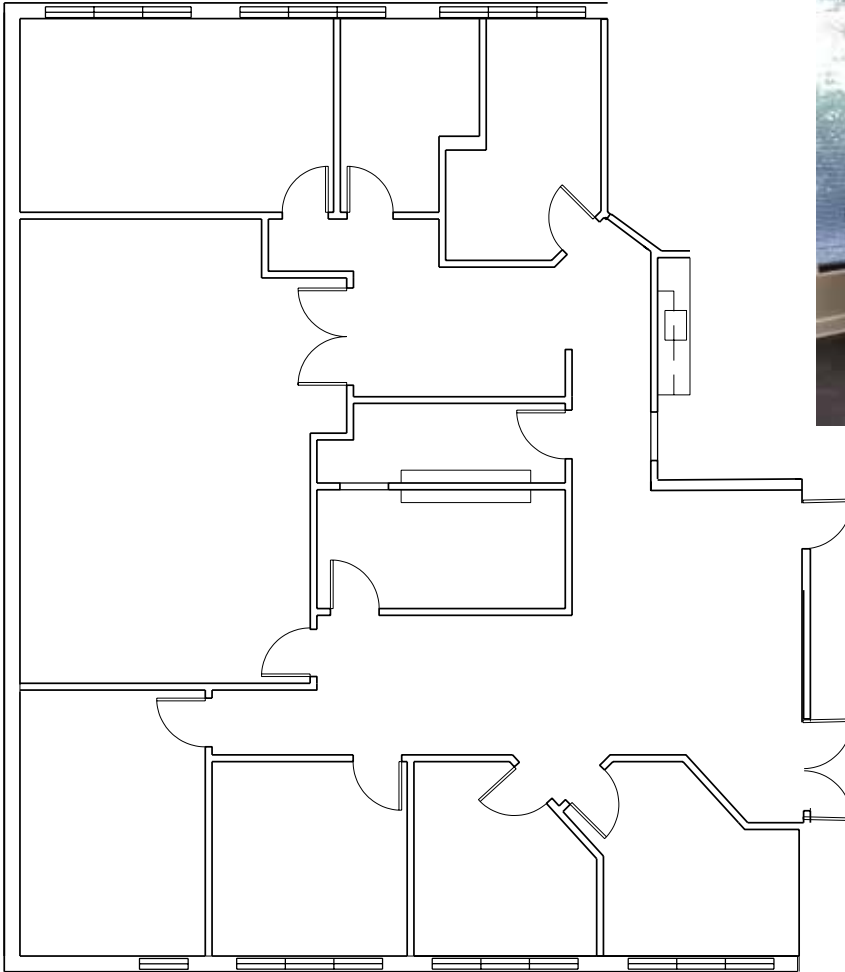


SHELLEY BHATIA sbhatia@trademarkproperties.com 910.273.8474 direct

CLAIBORNE LORD clord@trademarkproperties.com 919.645.1426 direct

1001 Wade Avenue, Suite 300, Raleigh, NC 27605 • trademarkproperties.com • 919.782.5552

SUITE 110: 3,150 SF

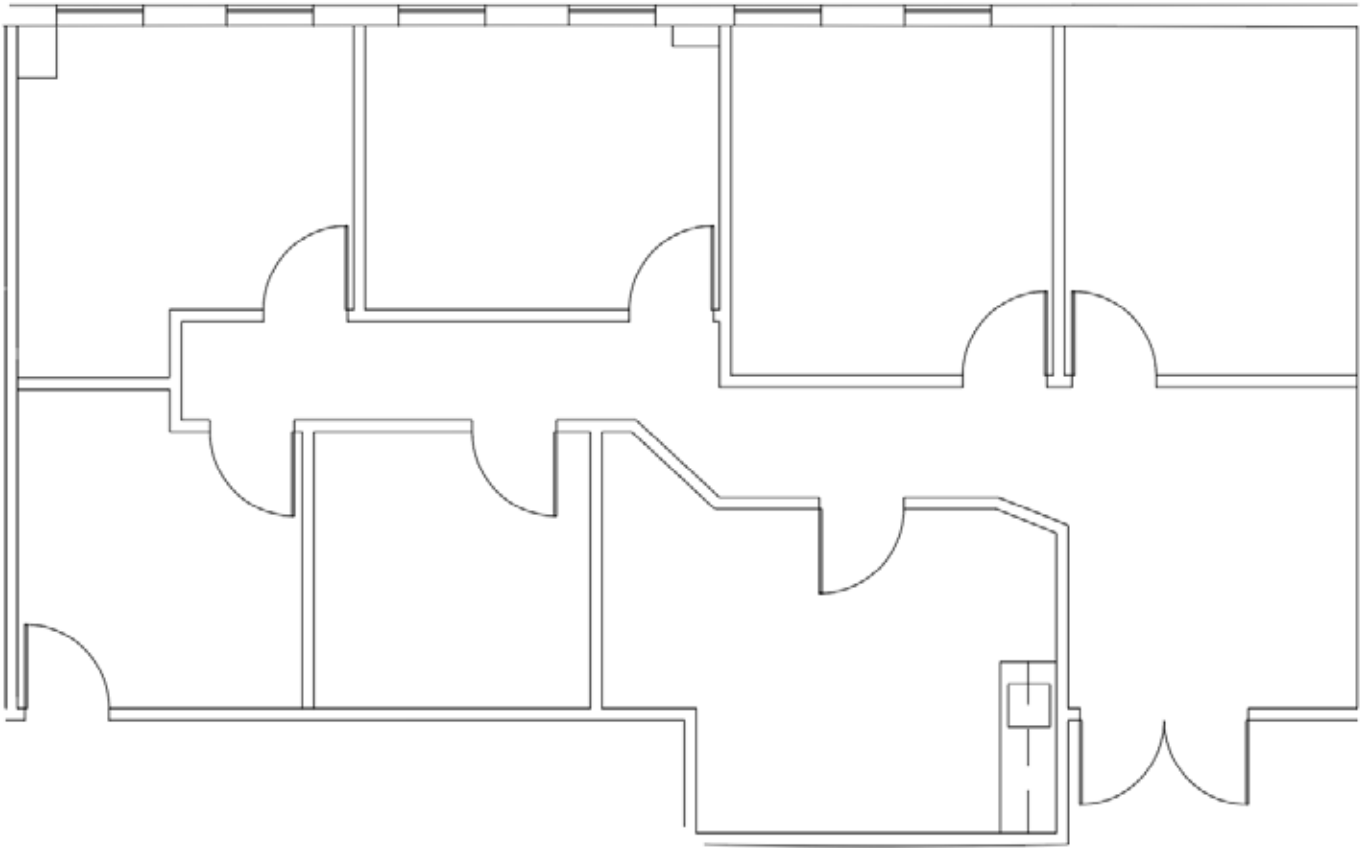


SHELLEY BHATIA
sbhatia@trademarkproperties.com
910.273.8474 direct

CLAIBORNE LORD
clord@trademarkproperties.com
919.645.1426 direct

SUITE 220: 1,575 SF

AVAILABLE DECEMBER 31, 2020



SHELLEY BHATIA

sbhatia@trademarkproperties.com

910.273.8474 *direct*

CLAIBORNE LORD

clord@trademarkproperties.com

919.645.1426 *direct*



SHELLEY BHATIA
sbhatia@trademarkproperties.com
910.273.8474 direct

CLAIBORNE LORD
clord@trademarkproperties.com
919.645.1426 direct