

THE VINE

900 Monroe Street, Hoboken, NJ

Last remaining retail vacancy in newly developed mixed-use project!



David Townes / david.townes@cushwake.com / 201 508 5268
Neil Seth / neil.seth@cushwake.com / 212 841 5063
Alana Friedman / alana.friedman@cushwake.com / 201 508 5258

WE ARE THE CENTER OF RETAIL
CUSHWAKERETAIL.COM



©2018 Cushman & Wakefield. All rights reserved. The information contained in this communication is strictly confidential. This information has been obtained from sources believed to be reliable but has not been verified. NO WARRANTY OR REPRESENTATION, EXPRESS OR IMPLIED, IS MADE AS TO THE CONDITION OF THE PROPERTY (OR PROPERTIES) REFERENCED HEREIN OR AS TO THE ACCURACY OR COMPLETENESS OF THE INFORMATION CONTAINED HEREIN, AND SAME IS SUBMITTED SUBJECT TO ERRORS, OMISSIONS, CHANGE OF PRICE, RENTAL OR OTHER CONDITIONS, WITHDRAWAL WITHOUT NOTICE, AND TO ANY SPECIAL LISTING CONDITIONS IMPOSED BY THE PROPERTY OWNER(S). ANY PROJECTIONS, OPINIONS OR ESTIMATES ARE SUBJECT TO UNCERTAINTY AND DO NOT SIGNIFY CURRENT OR FUTURE PROPERTY PERFORMANCE.

THE VINE

900 Monroe Street, Hoboken, NJ

Last remaining retail vacancy in newly developed mixed-use project!

NEIGHBORHOOD DEMOGRAPHICS


POPULATION


MEDIAN HOUSEHOLD
INCOME


DAYTIME
POPULATION

1 Mile	101,789	\$84,340	67,914
3 Mile	327,033	\$65,417	288,331
5 Mile	544,131	\$62,167	484,466

NEIGHBORING RETAIL:

Shoprite Supermarket, Black Rail Coffee, The Learning Experience, CKO Kickboxing, Smart Start Academy & more

COMMENTS:

- New 11-story, 135 unit residential and commercial development
- Located in densely populated Hoboken, NJ (101,789 people within 1 mile)
- Adjacent to the Hudson Bergen Light Rail w/ service directly to the Path
- Nearly 1,000 new residential units now built or in development immediately surrounding the site
- Ideal for restaurant, café, fitness, medical, retail, franchises, professional space and many other uses

David Townes / david.townes@cushwake.com / 201 508 5268
Neil Seth / neil.seth@cushwake.com / 212 841 5063
Alana Friedman / alana.friedman@cushwake.com / 201 508 5258



THE VINE

900 Monroe Street, Hoboken, NJ

Last remaining retail vacancy in newly developed mixed-use project!

RETAIL SPACE:

1,882 SF

ASKING BASE RENT:

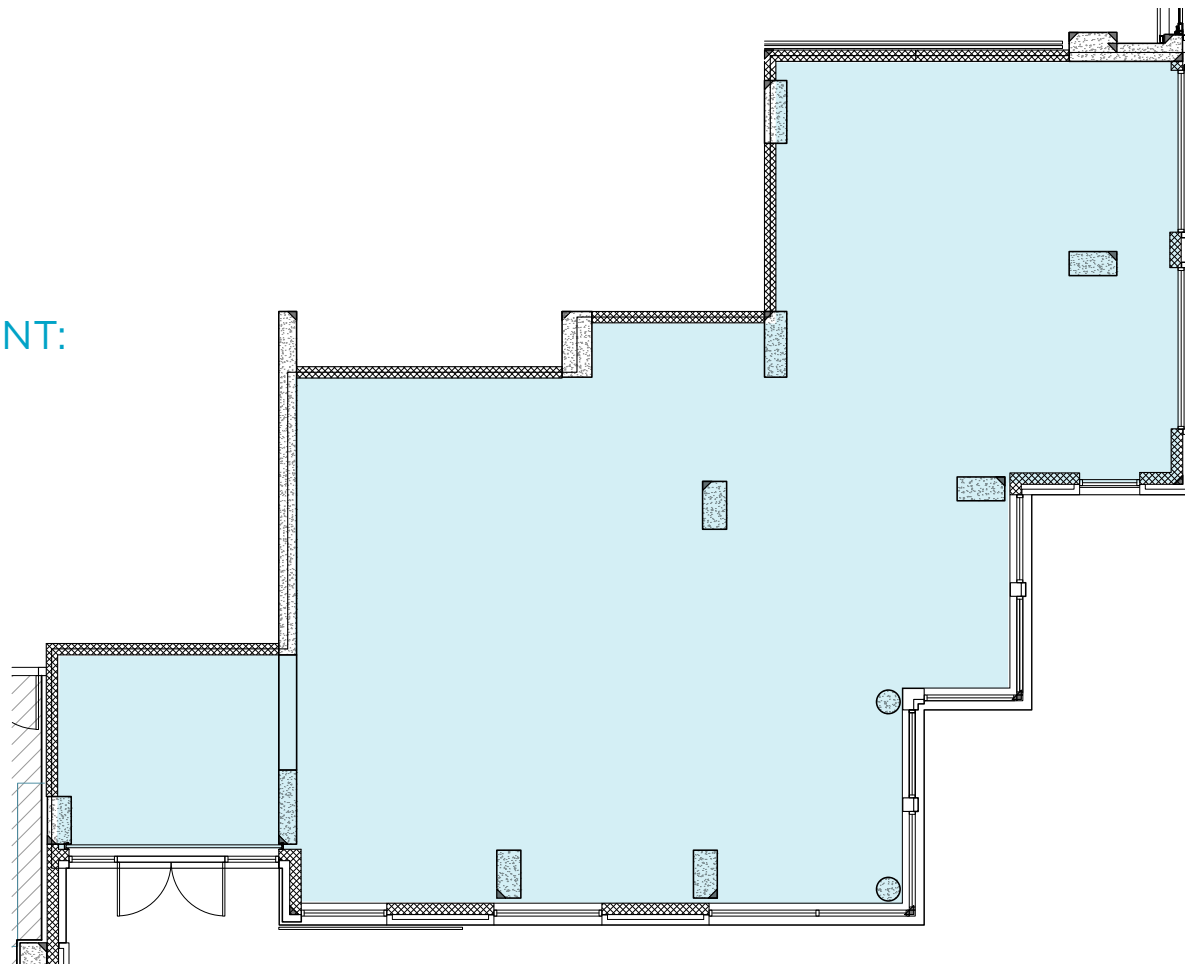
\$40 PSF

NNN:

\$11 PSF

AVAILABILITY:

IMMEDIATE



9TH AVENUE

MONROE STREET

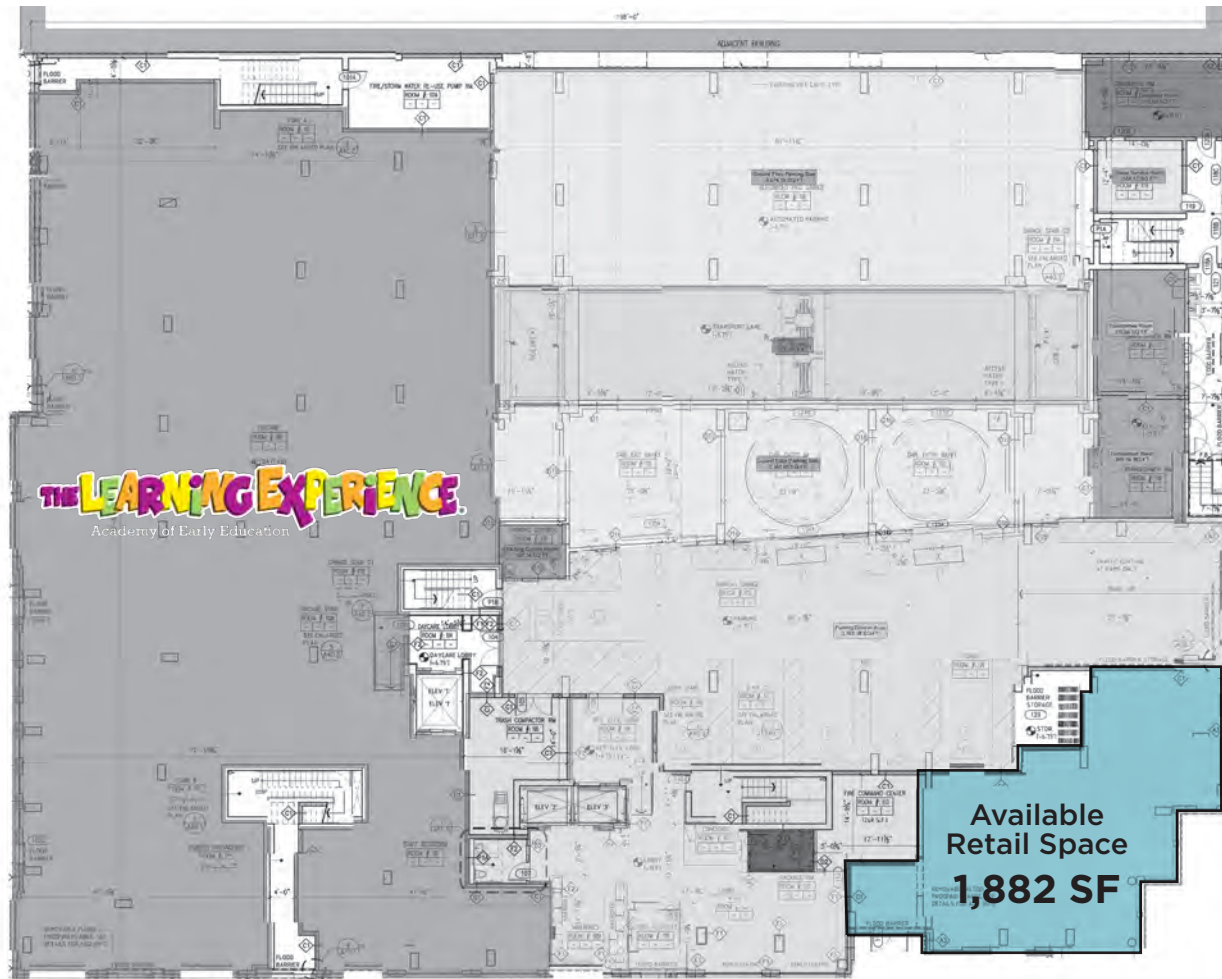
David Townes / david.townes@cushwake.com / 201 508 5268
Neil Seth / neil.seth@cushwake.com / 212 841 5063
Alana Friedman / alana.friedman@cushwake.com / 201 508 5258



THE VINE

900 Monroe Street, Hoboken, NJ

Last remaining retail vacancy in newly developed mixed-use project!



MONROE STREET

9TH AVENUE

David Townes / david.townes@cushwake.com / 201 508 5268
Neil Seth / neil.seth@cushwake.com / 212 841 5063
Alana Friedman / alana.friedman@cushwake.com / 201 508 5258



THE VINE

900 Monroe Street, Hoboken, NJ

Last remaining retail vacancy in newly developed mixed-use project!



David Townes / david.townes@cushwake.com / 201 508 5268
Neil Seth / neil.seth@cushwake.com / 212 841 5063
Alana Friedman / alana.friedman@cushwake.com / 201 508 5258



