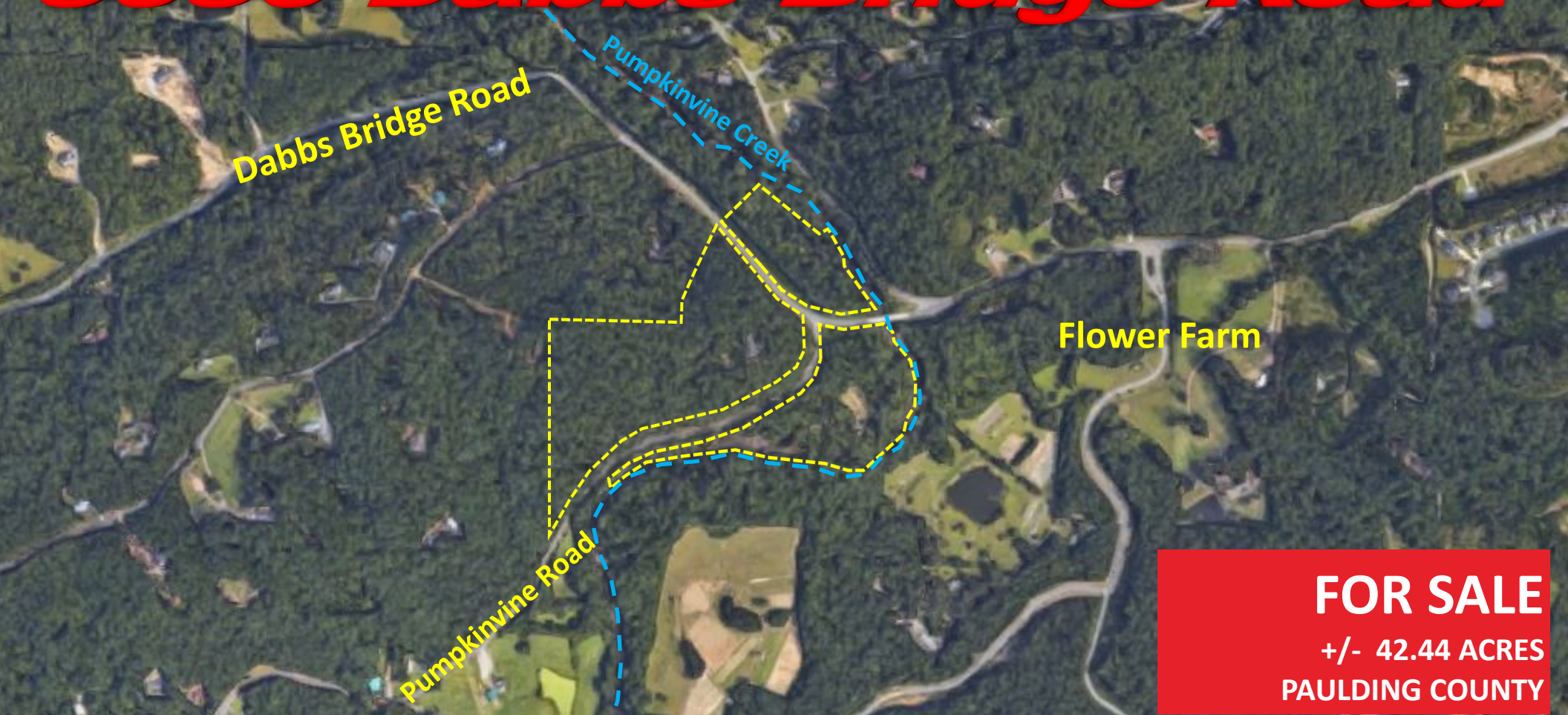


**A**tlanta  
**L**and  
**G**roup



# 5030 Dabbs Bridge Road



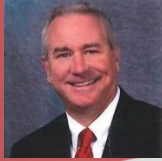
**FOR SALE**

**+/- 42.44 ACRES  
PAULDING COUNTY**



**Bobby Bresee | 404-781-7975**  
[bbresee@atlantalandgroup.com](mailto:bbresee@atlantalandgroup.com)

**KW Commercial Peachtree Road**  
804 Town Blvd. Ste A2040  
Atlanta, GA 30319  
404-419-3500

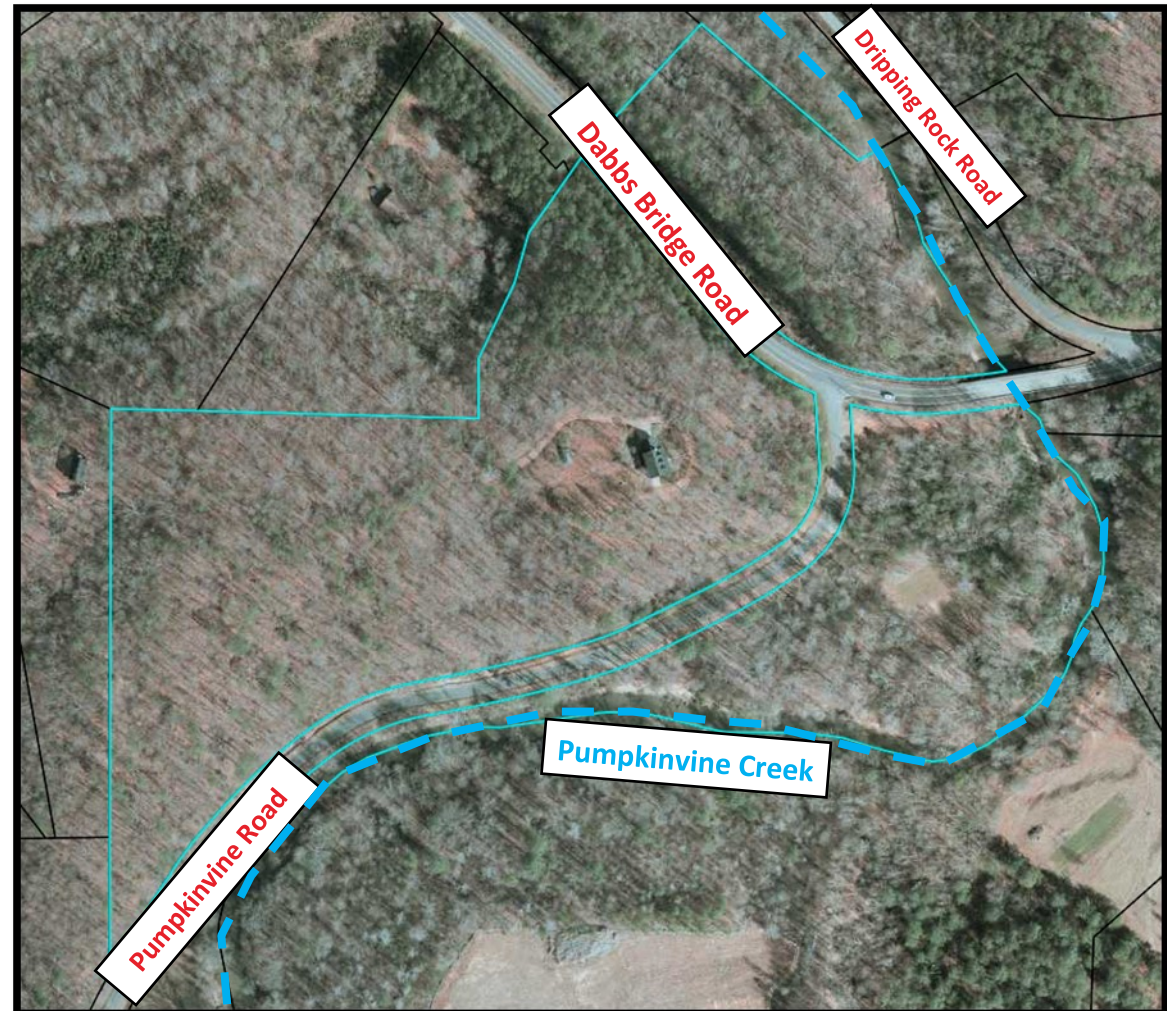


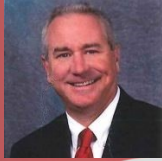
## PROPERTY OVERVIEW

- +/-42.44 Acres — Paulding County
- PARCEL ID : 009.3.2.007.0000
- ZONING : Conservation Covenant  
(Started in 2015)
- 2,236 SQ FT house built in 1992
- All Utilities Available
- TOPOGRAPHY : Gentle to steep
- In close proximity to U.S. 41
- ASSIGNED SCHOOLS : Burnt Hickory Elementary,  
Sammy McClure Sr. Middle, North Paulding High

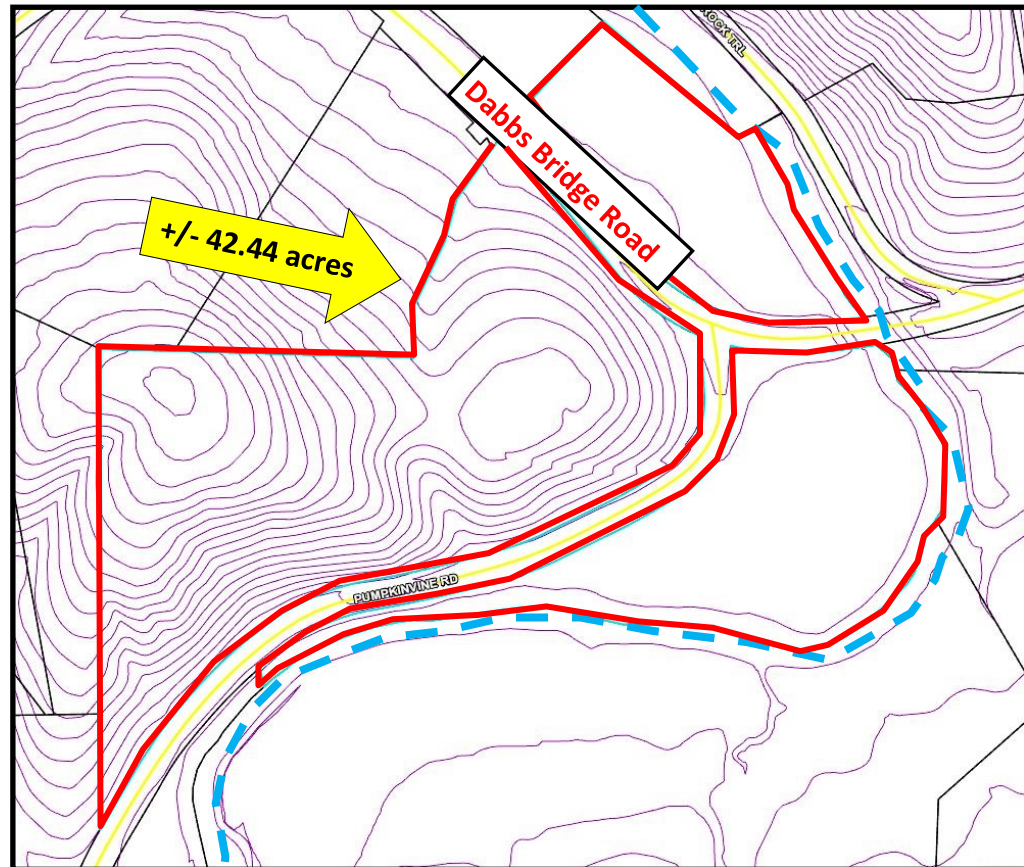
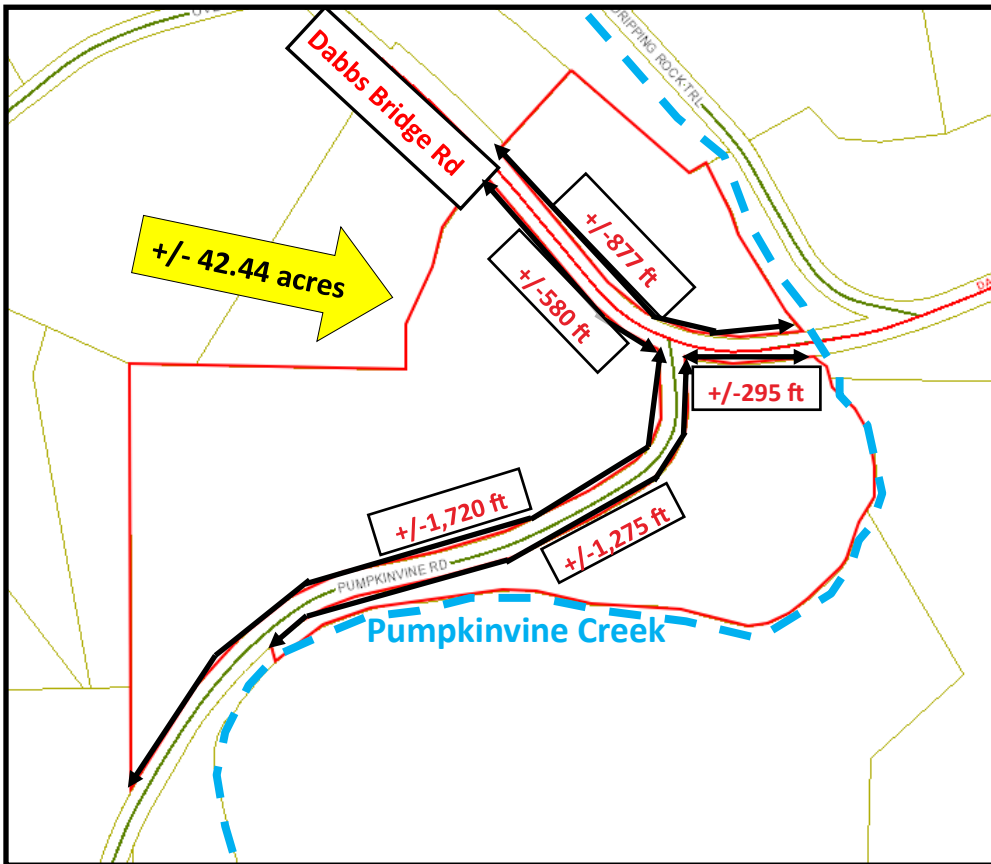
**Asking \$636,600**

**Motivated Seller\***





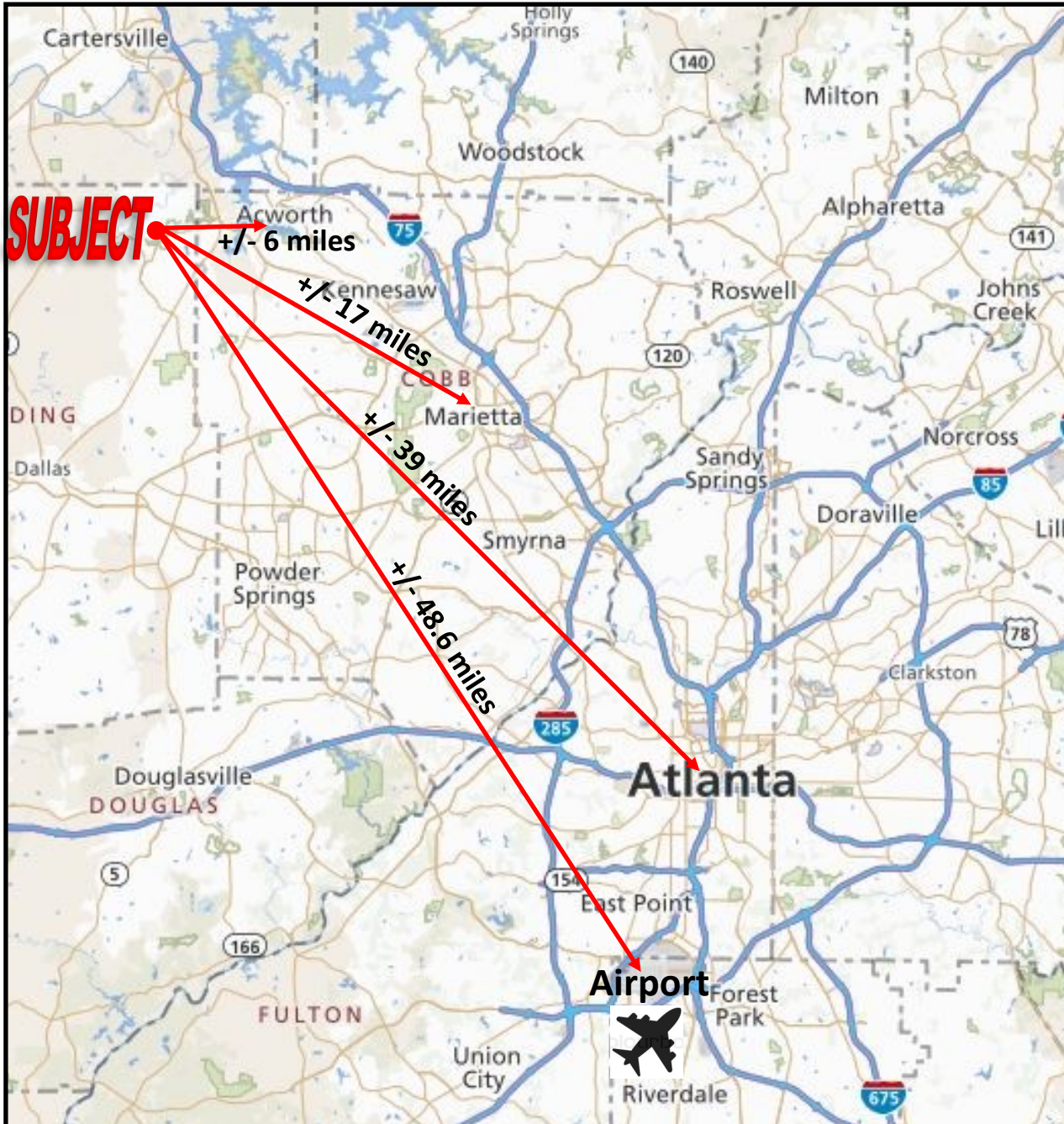
# TAX PLAT AND TOPOGRAPHY



10' Contours

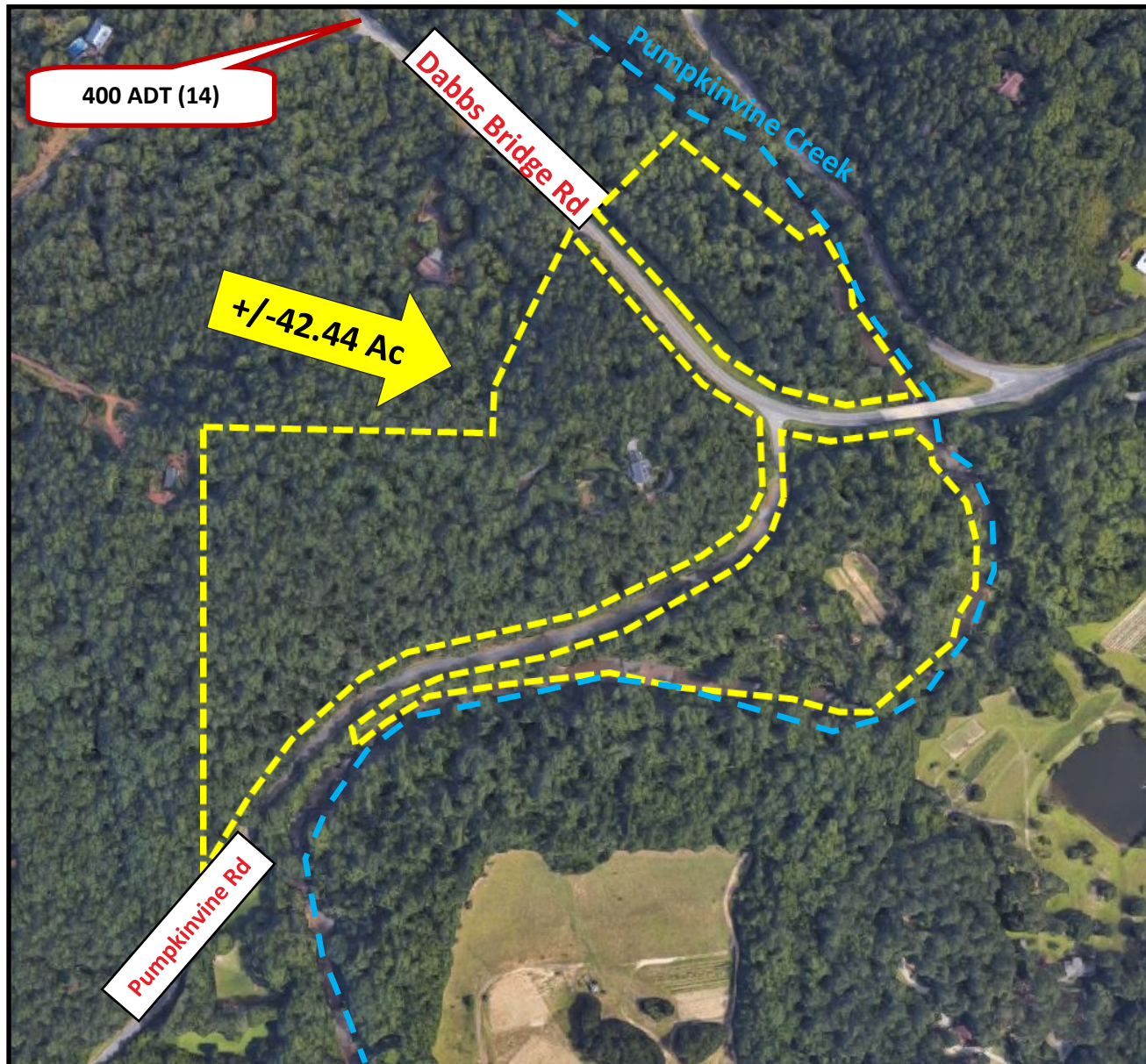


Bobby Bresee | 404-781-7975  
bbresee@atlantalandgroup.com





# AERIAL





**Bobby Bresee** | 404-781-7975  
bbresee@atlantalandgroup.com

## AREA DEMOGRAPHICS 2018 (Esri)

	Population	# of Households	Avg Household Income	Median Age
<b>1 Mile</b>	1,777	590	\$103,098	37
<b>1-3 Miles</b>	14,257	4,699	\$107,961	37
<b>3-5 Miles</b>	28,152	9,754	\$90,650	37

