

AVAILABLE

Granite Bay Business Park

4172 & 4176 Douglas Blvd, Granite Bay, CA



Property Details

- The last large buildable parcels in Granite Bay
- Each parcel can accommodate a ±20,100 SF building
- Located off Douglas Blvd in the Granite Bay Business Park
- Plans have been completed
- All utilities are stubbed to the site
- Restaurants, banking and many other professional services within walking distance



Tom S. Bacci, SVP
916.751.3630
tbacci@voitco.com
Lic. #01078422

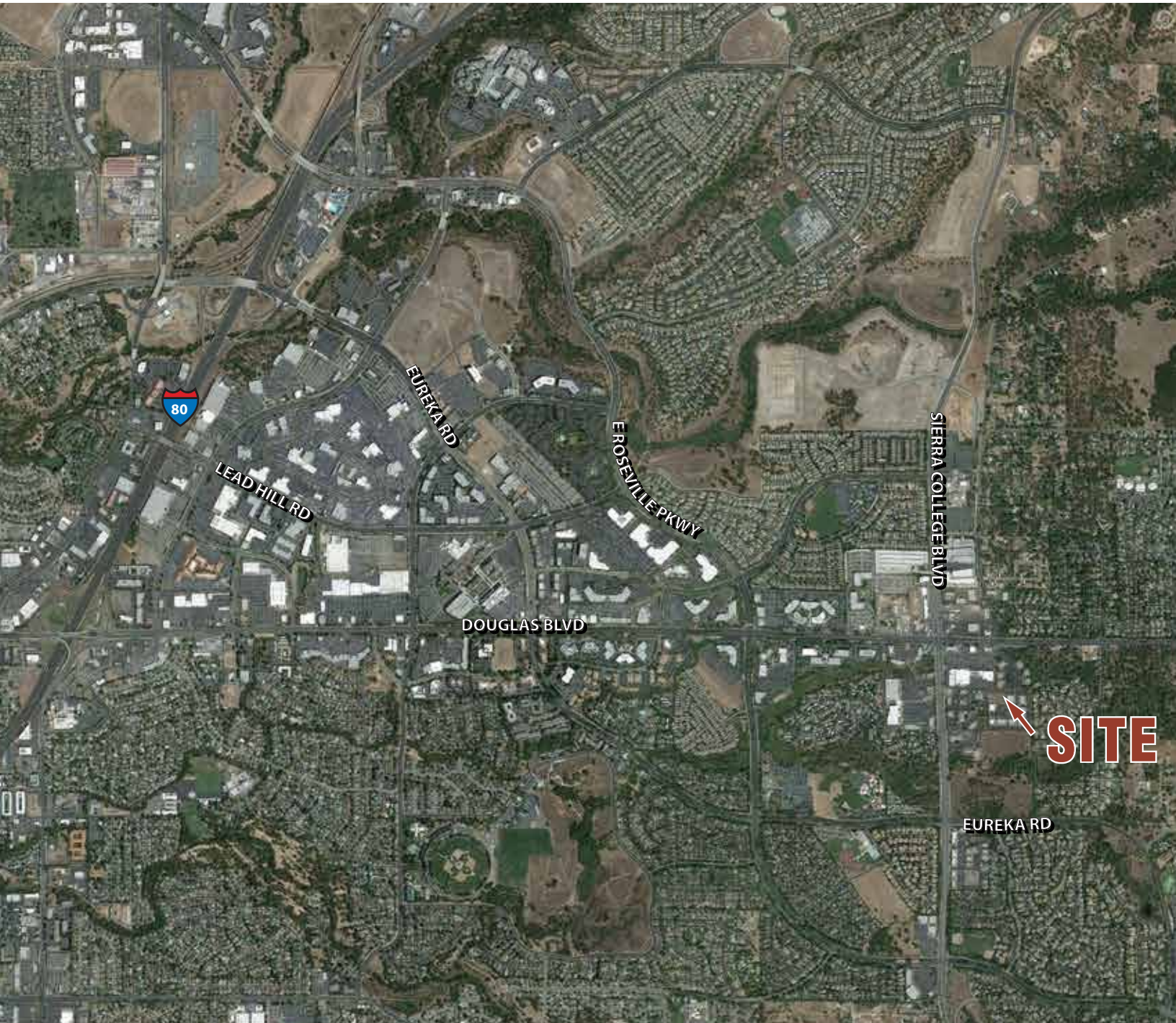
Jon R. Walker, SVP
916.751.3631
jwalker@voitco.com
Lic. #01204666

2237 Douglas Blvd., Suite 100, Roseville, CA 95661
916.772.8648 | 916.848.0205 Fax | Lic #01333376 | www.voitco.com

Voit
REAL ESTATE SERVICES

Available Granite Bay Business Park

4172 & 4176 Douglas Blvd, Granite Bay, CA



Tom S. Bacci, SVP
916.751.3630
tbacci@voitco.com
Lic. #01078422

Jon R. Walker, SVP
916.751.3631
jwalker@voitco.com
Lic. #01204666

2237 Douglas Blvd., Suite 100, Roseville, CA 95661
916.772.8648 | 916.848.0205 Fax | Lic #01333376 | www.voitco.com

The information contained herein has been obtained from sources we deem reliable. While we have no reason to doubt its accuracy, we do not guarantee it.
©2011 Voit Real Estate Services, Inc. All Rights Reserved. Real People. Real Solutions.® is a registered trademark of Voit Real Estate Services.

Voit
REAL ESTATE SERVICES