

32-07 30TH AVENUE

2ND FLOOR FULL BLOCK IDENTITY BETWEEN 32ND ST & NEWTOWN AVE
MOST ICONIC LOCATION IN ASTORIA



APPROXIMATE SIZE:

Ground Floor Entrance
1,800 sq. ft. - Second Floor

FRONTAGE:

Over 100' of wrap-around

POSSESSION:

Immediate

NEIGHBORING TENANTS:

Calexico (coming soon)
Dunkin Donuts
Carvel
Subway Sandwiches
Key Food
Atlantic Bank
Rite Aid
Chase
T-Mobile
Verizon

COMMENTS:

- Prime Second Floor office/retail space
- Full block identity
- Entrance to space located on 30th Avenue
- Sunlight space with beautiful hardwood floors
- Signed lease with Calexico on Ground
- 5 offices each with individual A/C control
- Space can be delivered completely open
- Most iconic location in Astoria

1/4 mile radius



15,995

Employees



\$88,095

Avg. Household Income



4,416

Businesses

MASS TRANSPORTATION:

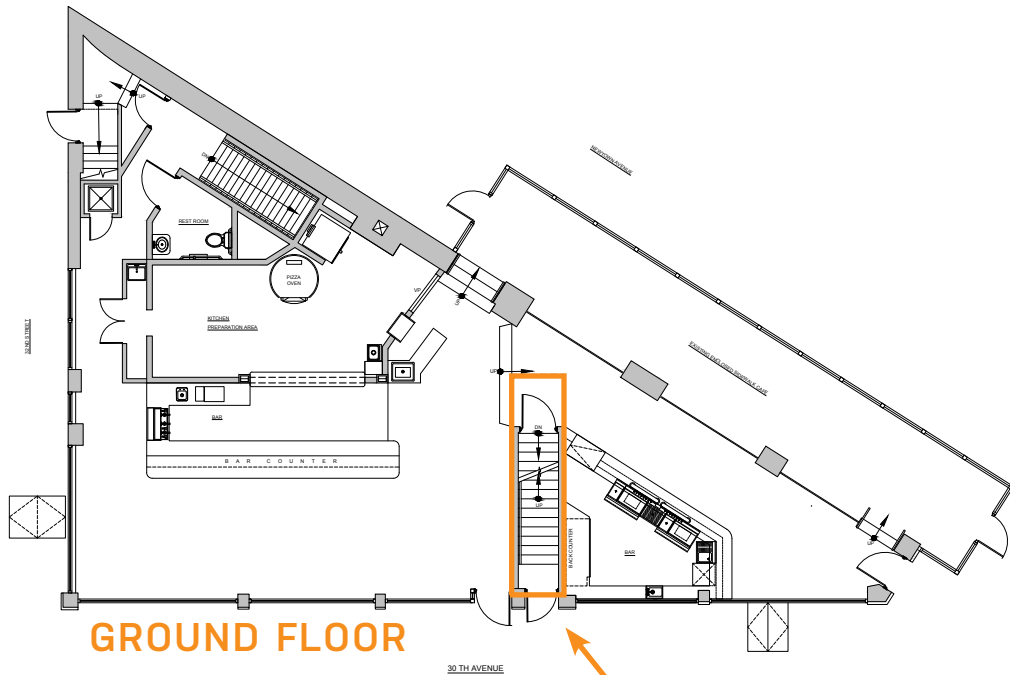
N R

30th Avenue Station
3,437,709 annual riders

ASTORIA RETAIL OPPORTUNITY

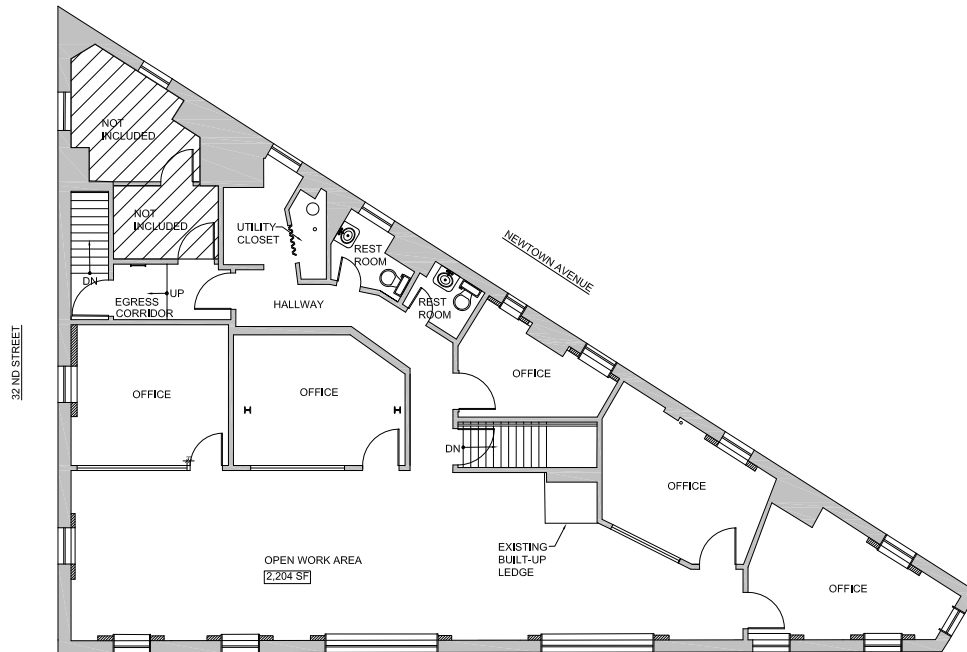
32-07 30TH AVENUE

Entire block front between 32nd St & Newtown Ave



GROUND FLOOR

30th Ave Ground Fl Entrance



SECOND FLOOR

CONTACT EXCLUSIVE AGENTS

Cory G. Zelnik
cory@zelnickco.com

Zelnik & Company LLC
(212) 223-2200

Sean Philipps
sean@zelnickco.com



fresk

NO PARKING
1
11/1/2019
4770434

RENTAL
SPACE
AVAILABLE
212.223.2200
Zelnik & Company

