



**CUSHMAN &
WAKEFIELD**

FOR LEASE

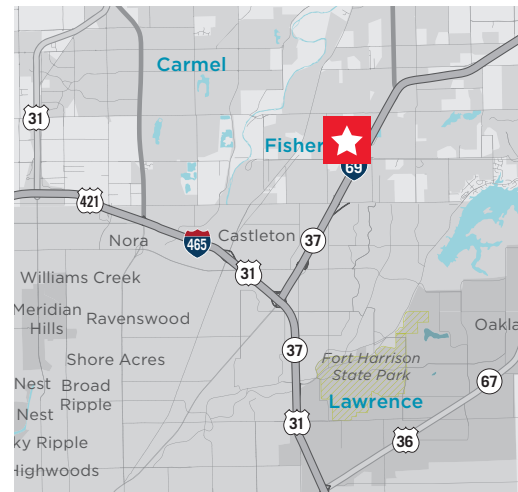
9955 Westpoint Drive, Suite 120
Indianapolis, IN 46256



Crosspoint III Office Warehouse Space

Property Highlights

- Available SF: 25,300 SF
- Office SF: 2,200 SF
- Docks: 3
- Drive-in Doors: 1 (12' x 14')
- Ceiling Height: 20'
- Column Spacing: 40' x 40'
- Electrical: 400A, 277/480V, 3 phase
- Lease Rate: \$5.50/SF NNN
- Operating Expenses: \$1.98/SF (2021 Est.)



Bryan W. Poynter, SIOR, CCIM

Senior Director

Direct +1 317 639 0482

bryan.poynter@cushwake.com

Fritz A. Kauffman, SIOR

Managing Director

Direct +1 317 639 0486

fritz.kauffman@cushwake.com

One American Square, Suite 1800

Indianapolis, IN 46282 | USA

Main +1 317 634 6363

Fax +1 317 639 0504

cushmanwakefield.com

©2020 Cushman & Wakefield. All rights reserved. The information contained in this communication is strictly confidential. This information has been obtained from sources believed to be reliable but has not been verified. NO WARRANTY OR REPRESENTATION, EXPRESS OR IMPLIED, IS MADE AS TO THE CONDITION OF THE PROPERTY (OR PROPERTIES) REFERENCED HEREIN OR AS TO THE ACCURACY OR COMPLETENESS OF THE INFORMATION CONTAINED HEREIN, AND SAME IS SUBMITTED SUBJECT TO ERRORS, OMISSIONS, CHANGE OF PRICE, RENTAL OR OTHER CONDITIONS, WITHDRAWAL WITHOUT NOTICE, AND TO ANY SPECIAL LISTING CONDITIONS IMPOSED BY THE PROPERTY OWNER(S). ANY PROJECTIONS, OPINIONS OR ESTIMATES ARE SUBJECT TO UNCERTAINTY AND DO NOT SIGNIFY CURRENT OR FUTURE PROPERTY PERFORMANCE.

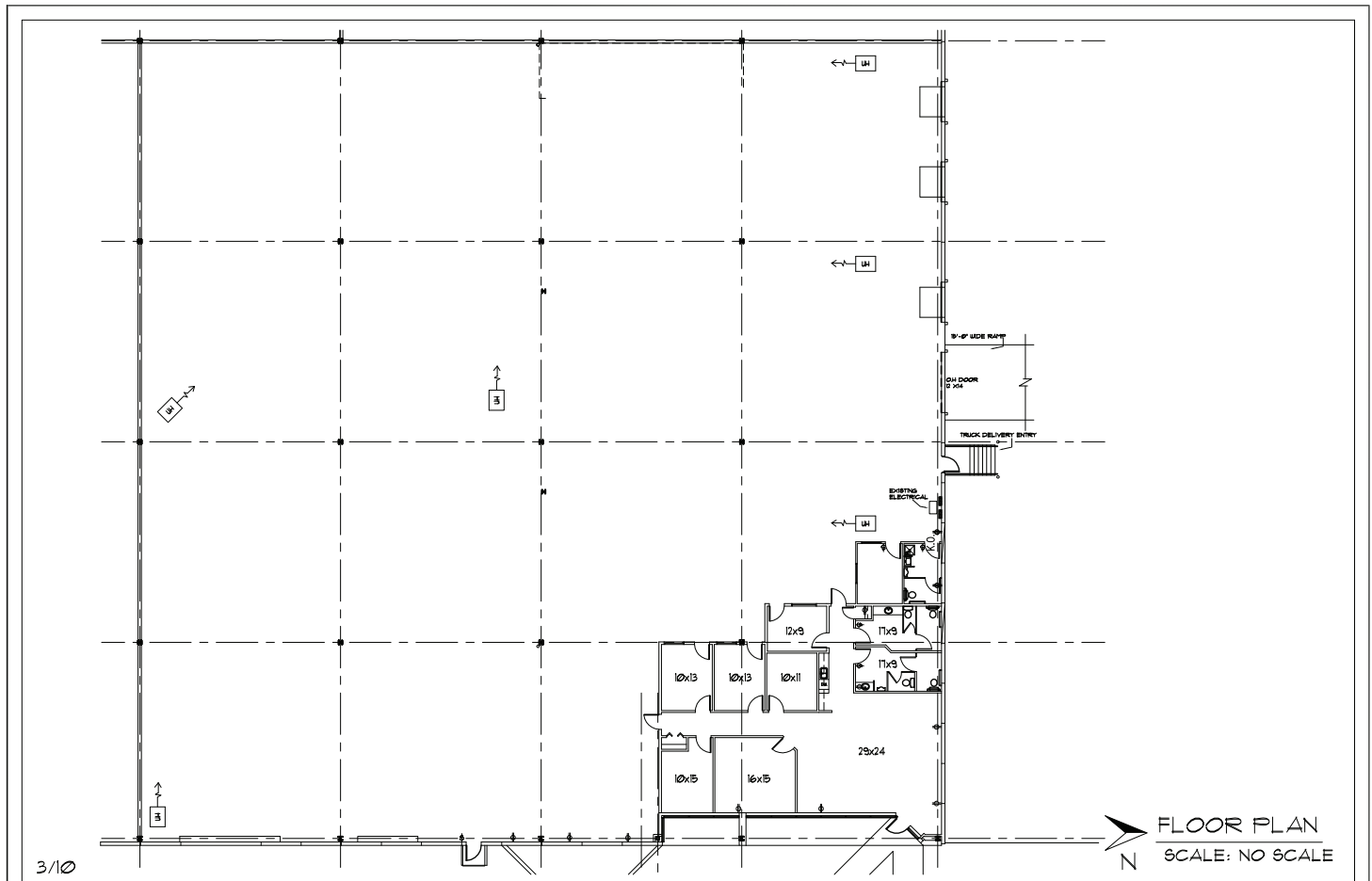


**CUSHMAN &
WAKEFIELD**

FOR LEASE

9955 Westpoint Drive, Suite 120
Indianapolis, IN 46256

Floor Plan



Bryan W. Poynter, SIOR, CCIM
Senior Director
Direct +1 317 639 0482
Mobile +1 317 670 4171
bryan.poynter@cushwake.com

Fritz A. Kauffman, SIOR
Managing Director
Direct +1 317 639 0486
Mobile +1 317 753 4444
fritz.kauffman@cushwake.com

One American Square, Suite 1800
Indianapolis, IN 46282 | USA
Main +1 317 634 6363
Fax +1 317 639 0504
cushmanwakefield.com