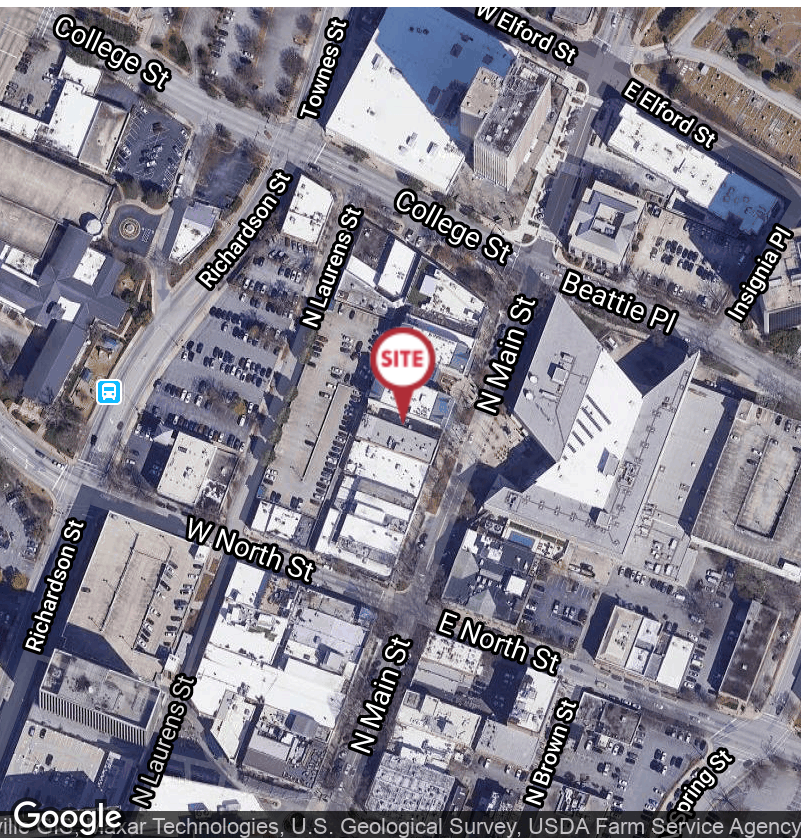


FOR SALE OR LEASE

225 N. Main St. Greenville, SC 29601

NAI Earle Furman



Office | 6,291 SF

- ±6,291 SF mixed use building
- ±2,081 SF Lower level office - \$15/SF NNN
- ±2,200 SF retail space - \$26/SF NNN
- ±2,010 SF apartment - call broker for lease rate
- Retail and 2nd Floor could be combined
- Ideal investment for Owner/User
- Historic Building constructed in 1925 and renovated in 2002
- Rear Access to adjacent parking garage
- Units utilities easily separated
- Sale price: \$1,700,000

✉ **James "John" Baldwin, IV, CCIM** ✉ **Keith Jones, CCIM, SIOR**
O: +1 864 678 5982 O: +1 864 232 9040
C: +1 864 238 6336 keith@naiearlefurman.com
jbaldwin@naiearlefurman.com

No Warranty, Or Representation, Express Or Implied, Is Made As To The Accuracy Of The Information Contained Herein, And The Same Is Submitted Subject To Errors, Omissions, Change Of Price, Partial Or Other Conditions, Prior Sale, Lease Or Financing, Or Withdrawal Without Notice And Of Any Special Listing Conditions Imposed By Our Principals. No Warranties Or Representations Are Made As To The Condition Of The Property Or Any Hazards Contained Therein Are Any To Be Implied.

📍 **101 E Washington St**
Greenville, SC 29601
naief.com

LOWER LEVEL OFFICE

Available for Lease



✉ James "John" Baldwin, IV, CCIM
O: +1 864 678 5982
C: +1 864 238 6336
jbdwin@naiearlefurman.com

✉ Keith Jones, CCIM, SIOR
O: +1 864 232 9040
keith@naiearlefurman.com

No Warranty Or Representation, Express Or Implied, Is Made As To The Accuracy Of The Information Contained Herein, And The Same Is Submitted Subject To Errors, Omissions, Change Of Price, Rental Or Other Conditions, Prior Sale, Lease Or Financing, Or Withdrawal Without Notice, And Of Any Special Listing Conditions Imposed By Our Principals No Warranties Or Representations Are Made As To The Condition Of The Property Or Any Hazards Contained Therein Are Any To Be Implied.

NAI Earle Furman

GROUND LEVEL RETAIL

Available for Lease



✉ James "John" Baldwin, IV, CCIM
O: +1 864 678 5982
C: +1 864 238 6336
jbaldwin@naiearlefurman.com

✉ Keith Jones, CCIM, SIOR
O: +1 864 232 9040
keith@naiearlefurman.com

No Warranty Or Representation, Express Or Implied, Is Made As To The Accuracy Of The Information Contained Herein, And The Same Is Submitted Subject To Errors, Omissions, Change Of Price, Rental Or Other Conditions, Prior Sale, Lease Or Financing, Or Withdrawal Without Notice, And Of Any Special Listing Conditions Imposed By Our Principals No Warranties Or Representations Are Made As To The Condition Of The Property Or Any Hazards Contained Therein Are Any To Be Implied.

NAI Earle Furman

2ND FLOOR CONDO

Available for Lease



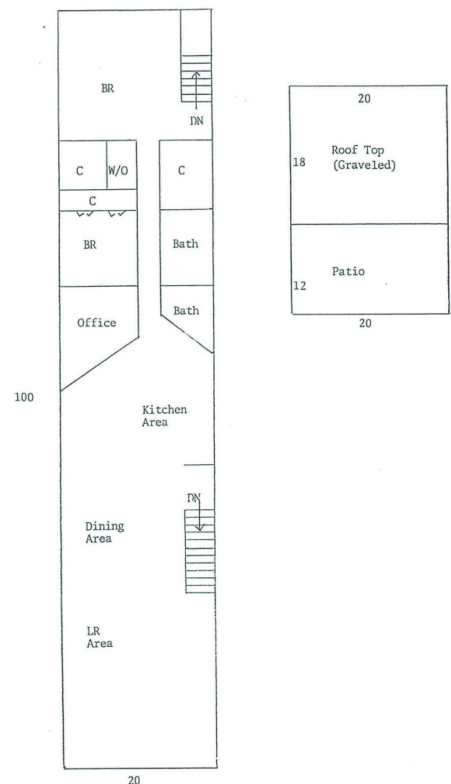
Living and Dining Room



Kitchen



Bedroom



2ND FLOOR CONDO FLOOR PLAN

✉ James "John" Baldwin, IV, CCIM ✉ Keith Jones, CCIM, SIOR
 O: +1 864 678 5982 O: +1 864 232 9040
 C: +1 864 238 6336 keith@naiearlefurman.com
 jbdwin@naiearlefurman.com

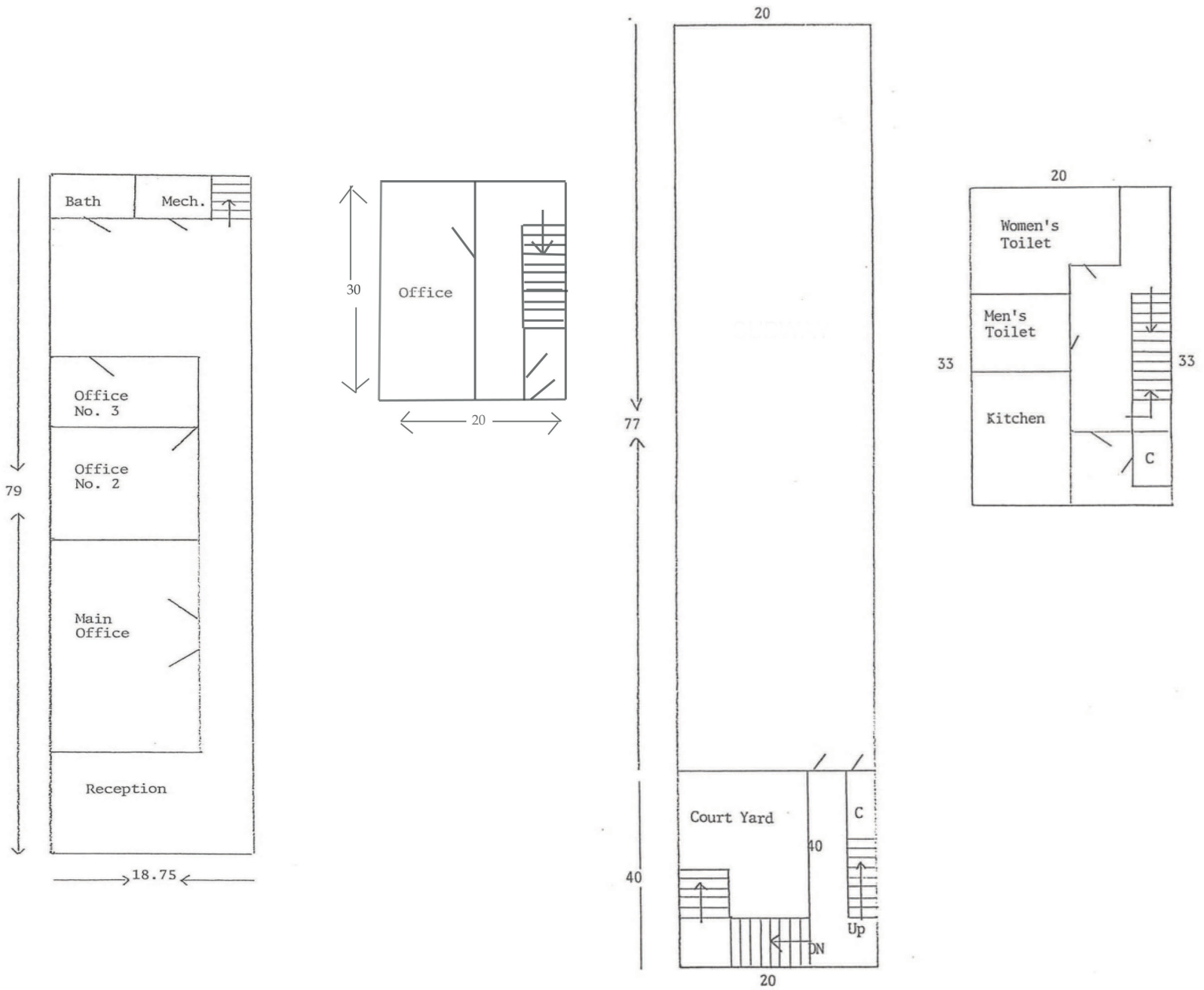
No Warranty Or Representation, Express Or Implied, Is Made As To The Accuracy Of The Information Contained Herein, And The Same Is Submitted Subject To Errors, Omissions, Change Of Price, Rental Or Other Conditions, Prior Sale, Lease Or Financing, Or Withdrawal Without Notice, And Of Any Special Listing Conditions Imposed By Our Principals No Warranties Or Representations Are Made As To The Condition Of The Property Or Any Hazards Contained Therein Are Any To Be Implied.

NAI Earle Furman

FLOOR PLANS

225 N. Main St. Greenville, SC 29601

AVAILABLE SPACE FLOOR PLANS



LOWER LEVEL OFFICE

GROUND LEVEL RETAIL

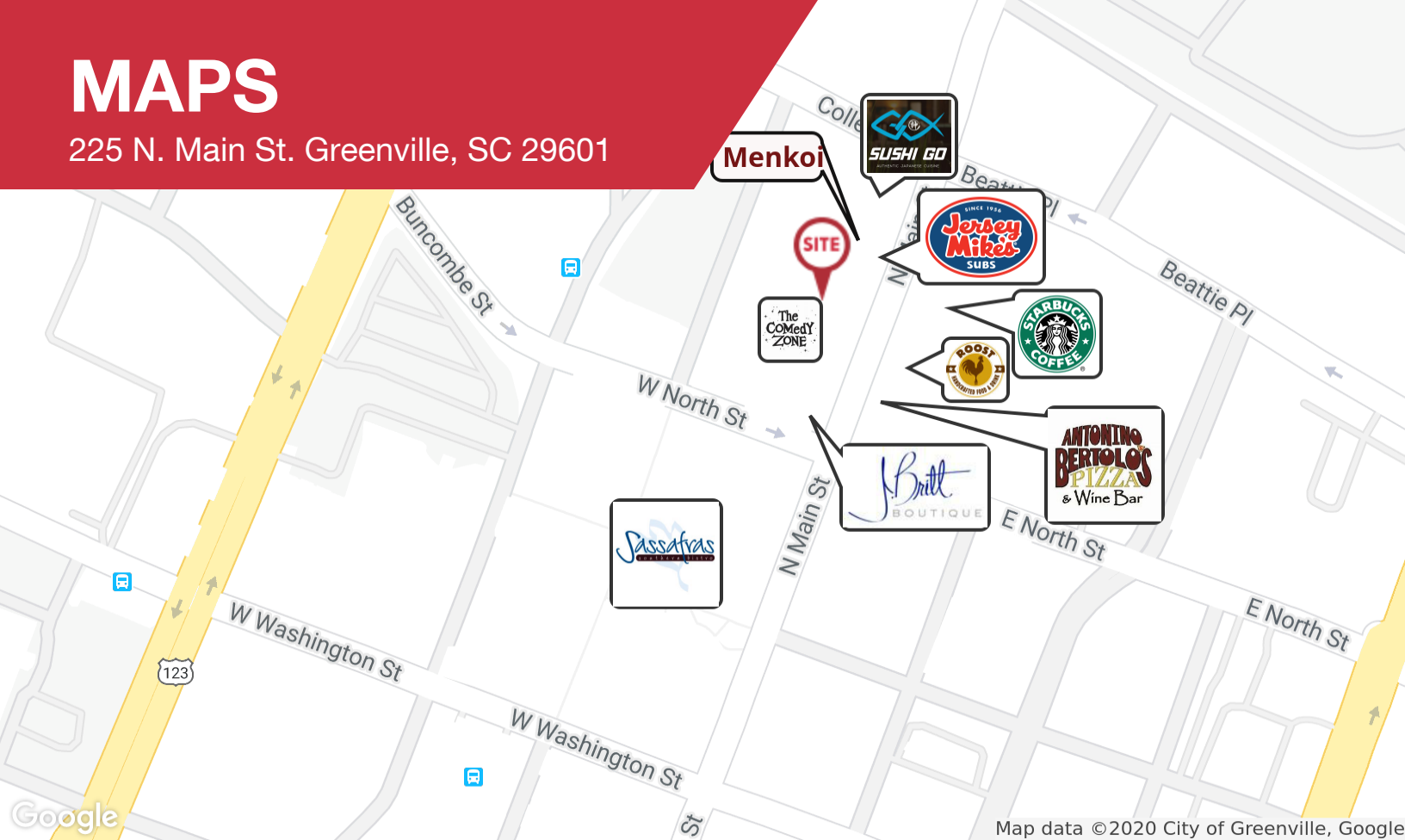
 **James "John" Baldwin, IV, CCIM**  **Keith Jones, CCIM, SIOR**
 O: +1 864 678 5982
 C: +1 864 238 6336
 jbbaldwin@naiearlearfurman.com
 keith@naiearlearfurman.com

No Warranty Or Representation, Express Or Implied, Is Made As To The Accuracy Of The Information Contained Herein, And The Same Is Submitted Subject To Errors, Omissions, Change Of Price, Rental Or Other Conditions, Prior Sale, Lease Or Financing, Or Withdrawal Without Notice And Of Any Special Listing Conditions Imposed By Our Principals No Warranties Or Representations Are Made As To The Condition Of The Property Or Any Hazards Contained Therein Are Any To Be Implied.

NAI Earle Furman

MAPS

225 N. Main St. Greenville, SC 29601



Local business near location



✉ James "John" Baldwin, IV, CCIM
O: +1 864 678 5982
C: +1 864 238 6336
jbaldwin@naiearlefurman.com

✉ Keith Jones, CCIM, SIOR
O: +1 864 232 9040
keith@naiearlefurman.com

No Warranty Or Representation, Express Or Implied, Is Made As To The Accuracy Of The Information Contained Herein, And The Same Is Submitted Subject To Errors, Omissions, Change Of Price, Rental Or Other Conditions, Prior Sale, Lease Or Financing, Or Withdrawal Without Notice, And Of Any Special Listing Conditions Imposed By Our Principals No Warranties Or Representations Are Made As To The Condition Of The Property Or Any Hazards Contained Therein Are Any To Be Implied.

NAI Earle Furman