



For Lease

370 W Passaic Street | Rochelle Park

+/- 26,700 RSF

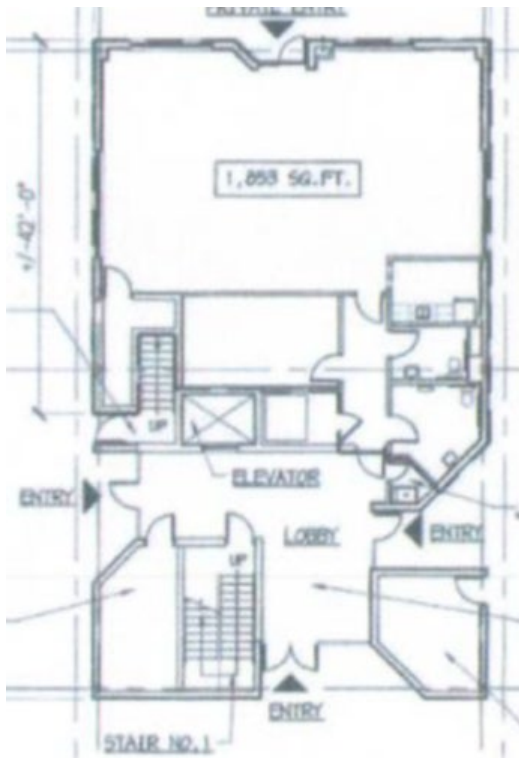
Three-Story HQ Quality Office Building

Floor Size:	2,995 SF – 13,341 SF	
Available Spaces:	1 st Floor	2,995 SF – 120 Days
	2 nd Floor	10,340 SF – 120 Days
	3 rd Floor	13,341 SF (includes outdoor terraces)
Site Zoning:	1.23 Acres/OR-4	
Year Built:	1980	
Structure:	Steel Frame with Granite panels	
Parking:	3.00/1,000 SF Surface Parking	
Amenities:	Hotel/Retail/Restaurants nearby	
Location:	Close to Exit 163 on the Garden State Parkway	
Neighbors:	Morgan Stanley, UBS, DeCotiis Law Firm	

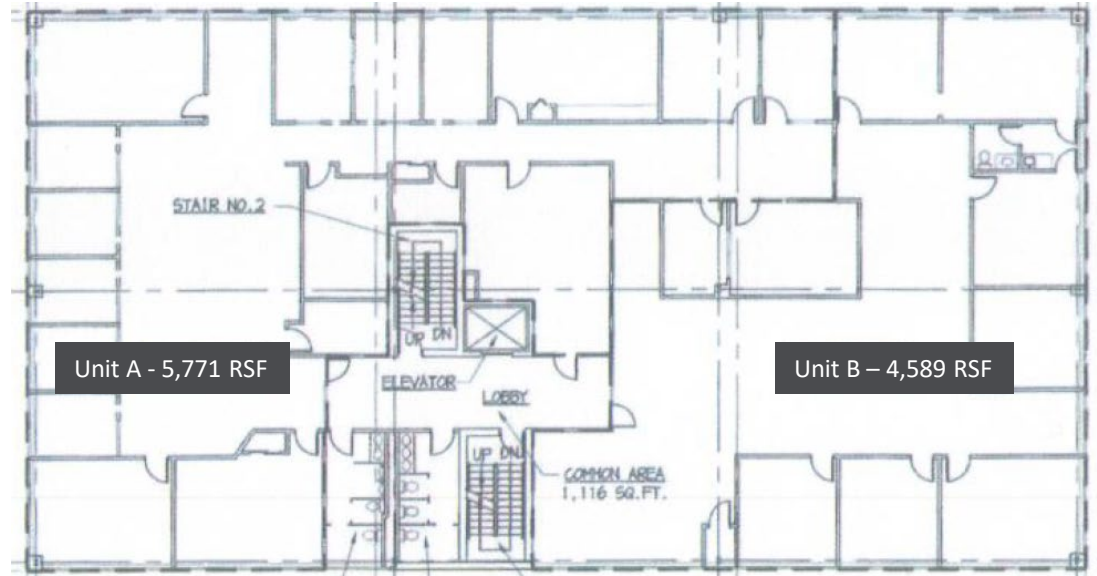




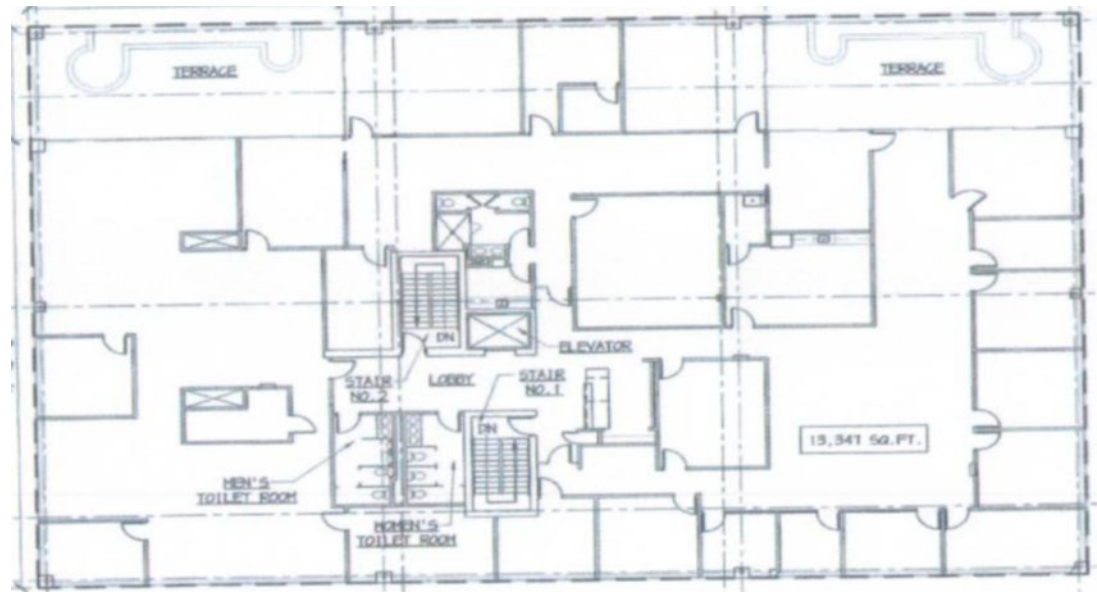
First Floor – 2,995 RSF

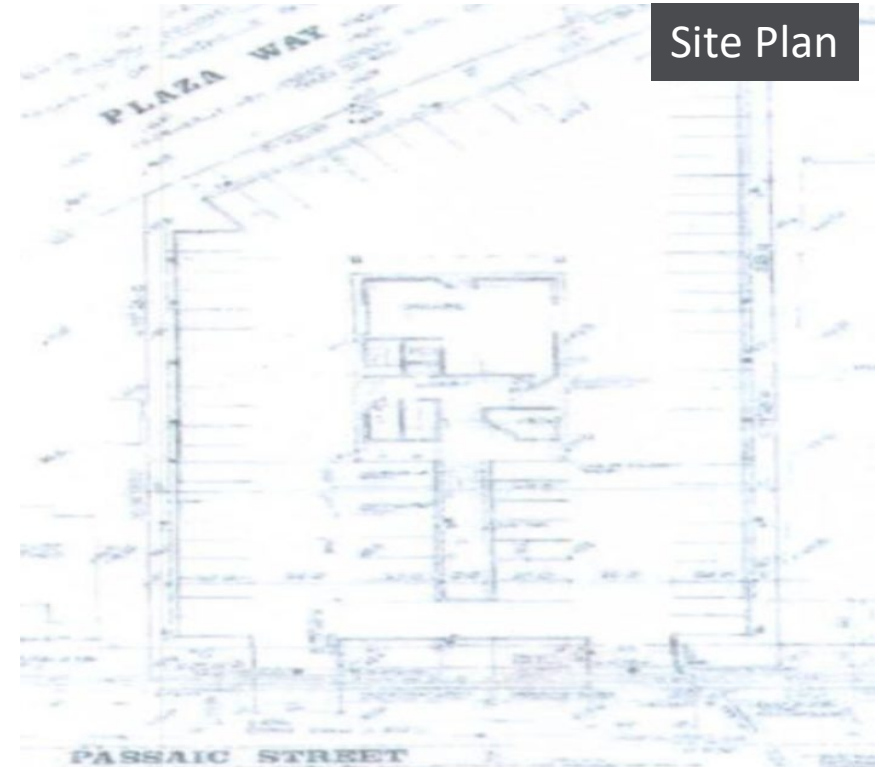


Second Floor – 10,360 RSF



Third Floor – 13,341 RSF





Site Plan

For more information, please contact:

Tom Reilly
201 528 4455
thomas.reilly@am.jll.com

Marc Hirschinger
201-314-6016
mhirschinger@liamtaylorre.com

