



1,539 SF Office Space
Lease Rate: \$21.00 PSF (Full Service)

Excellent plug-in-play space opportunity located in the central West Dodge corridor with existing furniture in place. Join Access Bank in the recently updated, four-story building. Ample parking and 24/7 key card access adds to the allure of this property. Located at 87th & West Dodge Road, located minutes away from I-680.

Martin Patzner, CPM, RPA
Vice President, Office Specialist
(402) 548 4033
mpatzner@lundco.com

Spencer Secor
Associate
(402) 548 4069
ssecor@lundco.com

450 Regency Parkway, Suite 200
Omaha, NE 68114
+1 402 393 8811
lundco.com

Independently Owned and Operated / A Member of the Cushman & Wakefield Alliance

Cushman & Wakefield Copyright 2018. No warranty or representation, express or implied, is made to the accuracy or completeness of the information contained herein, and same is submitted subject to errors, omissions, change of price, rental or other conditions, withdrawal without notice, and to any special listing conditions imposed by the property owner(s). As applicable, we make no representation as to the condition of the property (or properties) in question.



Availability

Lease Rate	\$21.00 PSF (Full Service)
Total Available	1,539 SF
Total Contiguous	1,539 SF

Suite	Square Feet (min - max)	Price/SF Full Service	Date Available
402	1,539 - 1,539	\$21.00	Immediately

Property Highlights

Building Size	63,260 SF
Parking	4.2:1000 SF
Year Built/Renovated	1968/2007
No. of Floors	4
Total Site Area	3.03 AC
Zoning	GO
Traffic Counts	77,000 EADT

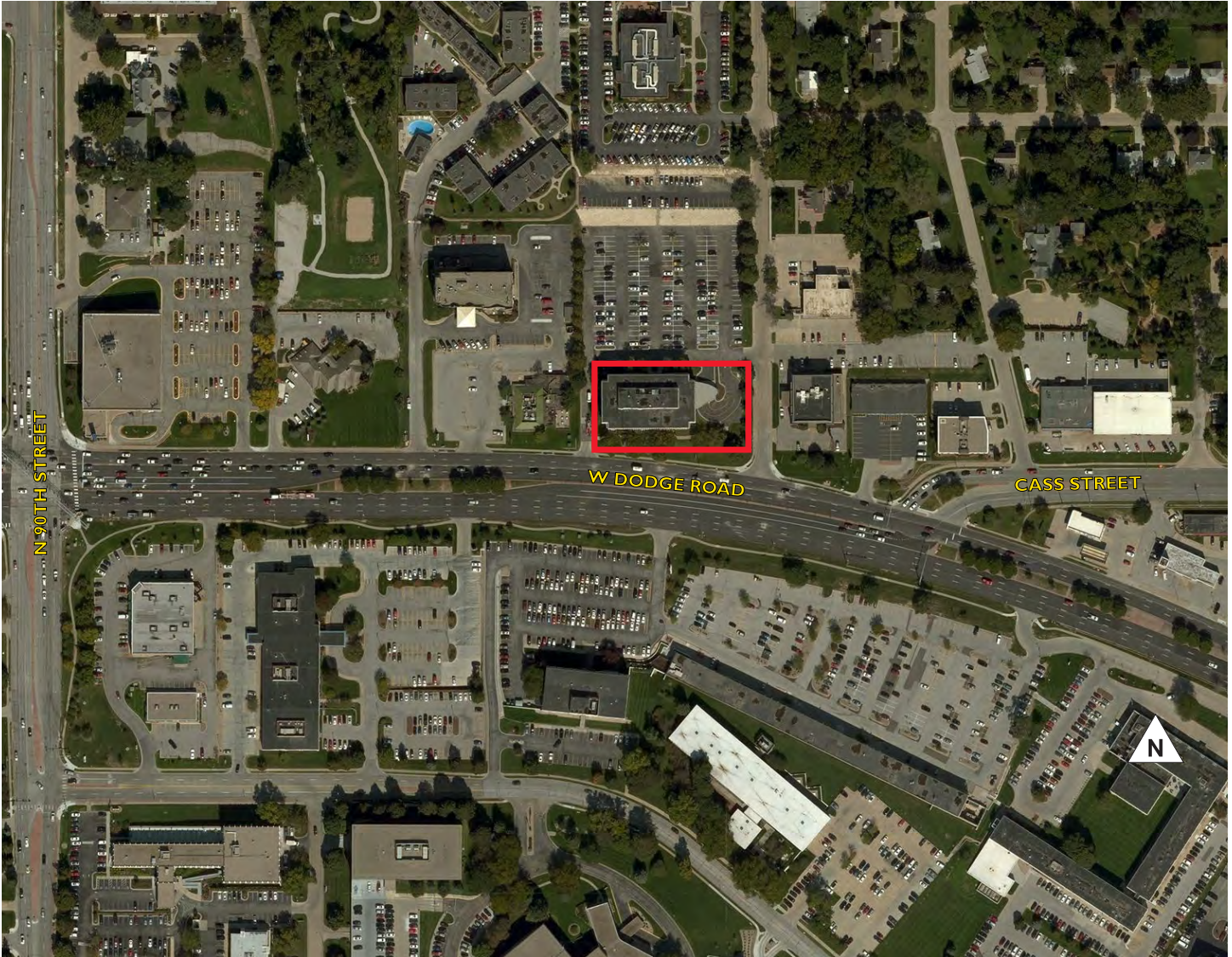
Suite 401 Floor Plan



FOR LEASE

8712 West Dodge Road
Omaha, Nebraska

Aerial & Map



Independently Owned and Operated / A Member of the Cushman & Wakefield Alliance

Cushman & Wakefield Copyright 2018. No warranty or representation, express or implied, is made to the accuracy or completeness of the information contained herein, and same is submitted subject to errors, omissions, change of price, rental or other conditions, withdrawal without notice, and to any special listing conditions imposed by the property owner(s). As applicable, we make no representation as to the condition of the property (or properties) in question.