

# 22.71 Acre Farm & Historic Stone Farmhouse **VCRE.CO**

9013 Geisbert Road | Woodsboro | MD | 21798



**22.71 Acre Farm with a beautiful historic stone farmhouse, barn, shed (s) and other outbuildings. This completely remolded home features 4 bedrooms, 2.5 baths, 2 fireplaces, a gorgeous kitchen, stunning hardwood floors throughout, a walkout patio from the master bedroom, a large detached garage. Offered at \$1,000,000.**



Office: 240.367.9600 | Fax: 240.668.6822 | 1845 Brookfield Ct. | Frederick, MD 21701

Tony "C" Checchia

301.471.8669 (Tony) mobile

TonyC@vcre.co

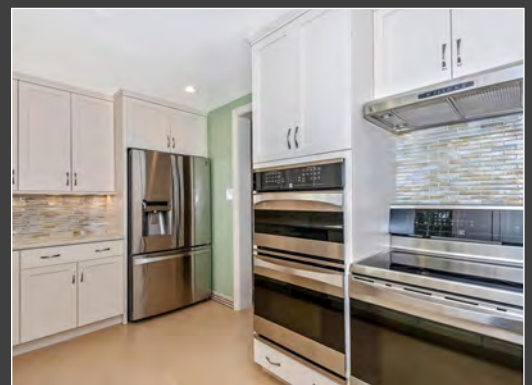
**240.367.9600**

# 9013 Geisbert Road

Woodsboro | MD | 21798

VCRE.CO

**22.71 Acre farm with captivating panoramic views capturing the open pasture, the flowing creek, a pond and beautiful views of the mountains.**



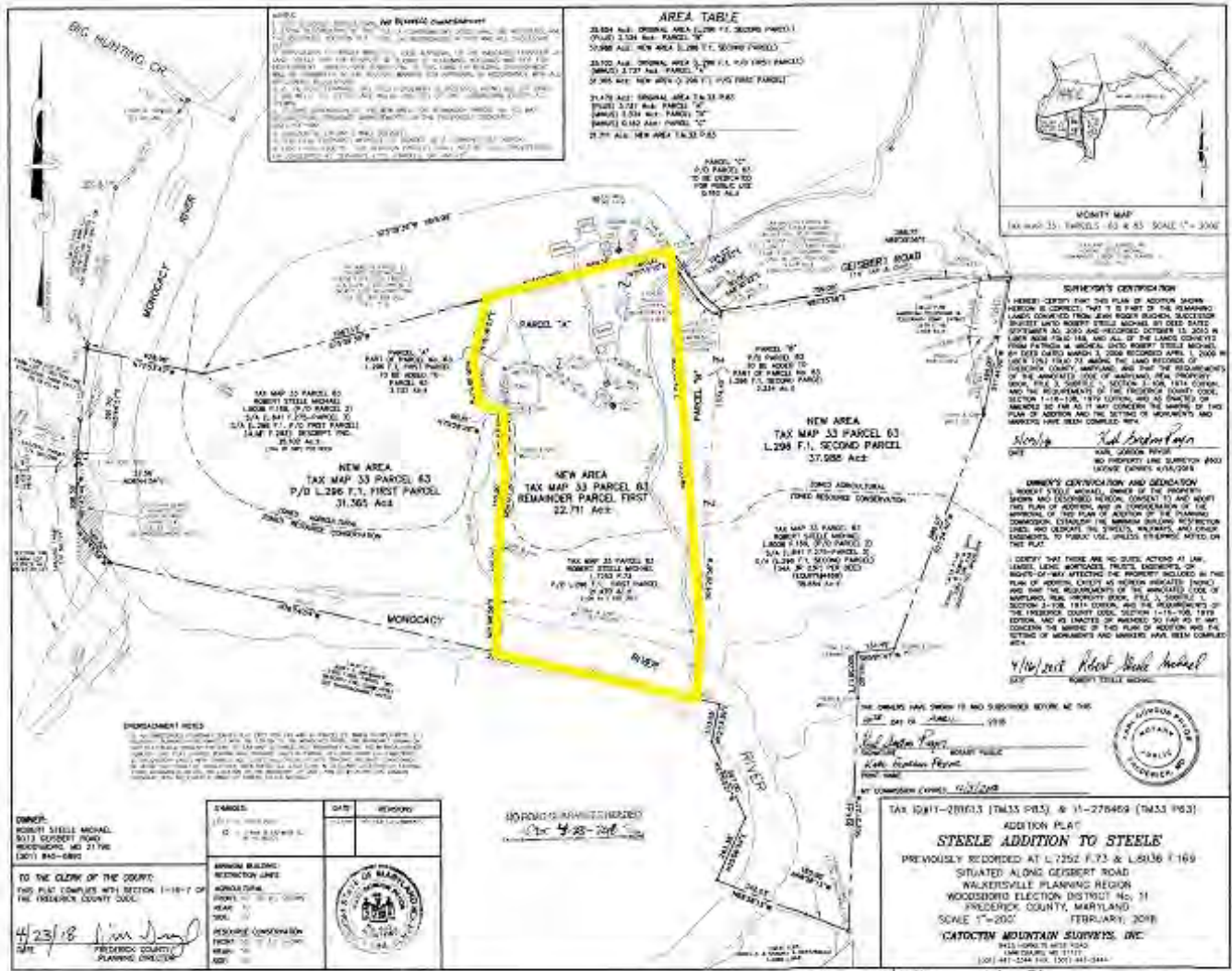
## Presenting

<b>Lot Size:</b>	<b>22.71Acres</b>
<b>Zoning:</b>	<b>Agricultural IPP Easement</b>
<b>Improvements:</b>	<b>Historic Stone Farmhouse, barn, shed(s) several outbuildings</b>
<b>Farmhouse:</b>	<b>3,726 SF</b>
<b>Sale Price:</b>	<b>\$1,000,000</b>
<b>Year Built:</b>	<b>1890</b>

**Additional parcels also available. One featuring 135 acres with several improvements to include farmhouse, barn, shed, pole shed and detached garage. Offered at 1.5 Million. The second one with 109 acres of farmland. Offered at \$872,000 and the third to include this offering plus an additional 69.29 acres offered at 1.5 Million. Additionally, all 7 parcels can be purchased together for 3.6 Million.**

Disclaimer: Information obtained from sources deemed to be reliable. However, we make no guarantee, warranty or representation. Information, prices, and other data may change without notice.

Plat



Disclaimer: Information obtained from sources deemed to be reliable. However, we make no guarantee, warranty or representation. Information, prices, and other data may change without notice.