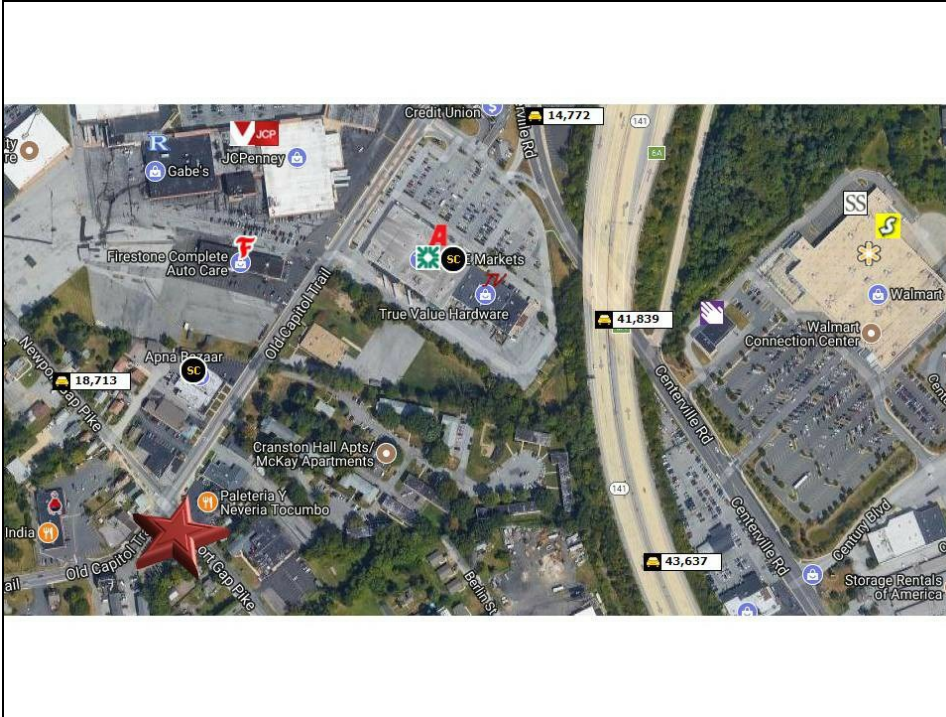




## Properties for Lease

1 3400 Old Capitol Trl, Wilmington, DE 19808



### Property Details

Rental Rate Yr	\$18.00 /SF/Yr
Property Type	Retail
Property Sub-type	Freestanding
Construction Status	Proposed
Gross Leasable Area	4,500 SF
Year Built	2019
Status	Active
LoopNet ID	11658446

### Broker Information



Jody Amato  
(302) 983-2113

### Property Notes

1/2+ Acre. Signalized Corner. In-Line or Pad. Prices Corner. Off Kirkwood Hwy and Rt. 141.

Listing's Link: <http://www.loopnet.com/lid/11658446>

### Spaces

#	Space Avail.	Rental Rate	Min Divisible	Max Contiguous	Lease Type	Date Avail.	Description	Sublease
1st Floor	1,500 - 4,500 SF	\$18.00 /SF/Yr	1,500 SF	4,500	New	To Be Determined	Proposed Retail Development Site. Inline or Pad. Concept Sketch depicting up to 4,500 sf attached.	

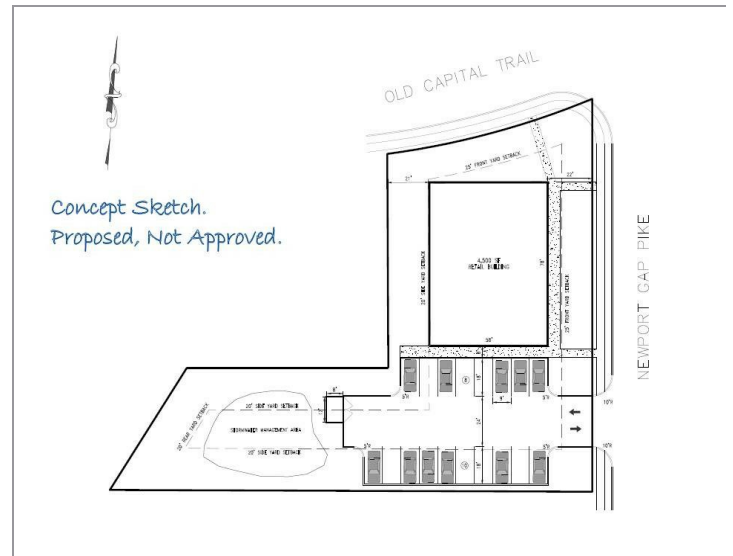
### Property Description

PROPOSED DEVELOPMENT. RETAIL PAD or IN-LINE. Signalized Intersection. Two Parcels Zoned CR, totaling +- .57ac. Concept sketch depicting a proposed up to 4,500 sf Retail. +-100 ft frontage on Old Capitol Trail. +- 193 ft frontage on Newport Gap Pike. Just off Kirkwood Hwy and Rt. 141, near Prices Corner Shopping Center, Wal-Mart, Acme.

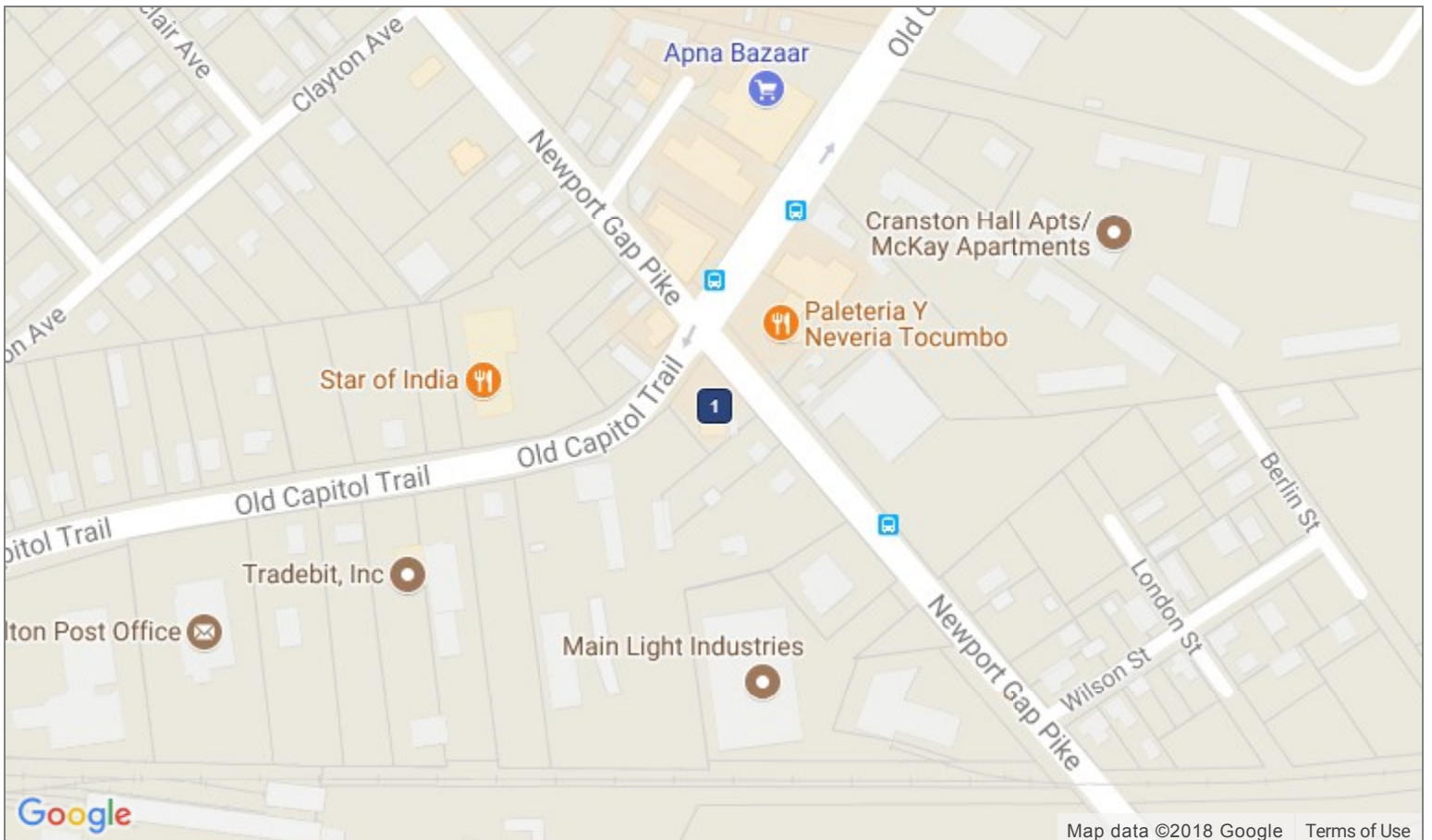
### Highlights

PROPOSED RETAIL PAD or IN-LINE SPACE.	Two Parcels Totaling +- .57 Acres.	Zoned CR. Suitable for Fast Food / Retail.
Concept Sketch depicting a Proposed 4,500 sf Retail Building.	+100 ft frontage on Old Capitol Trail, and +- 193 ft frontage on Newport Gap Pike. Projected Ingress/Egress both Roads.	Just off Kirkwood Hwy and Rt. 141, near Prices Corner Shopping Center, Walmart, Acme.

## Photos



**Map**



**1** 3400 Old Capitol Trl  
Wilmington, DE 19808