



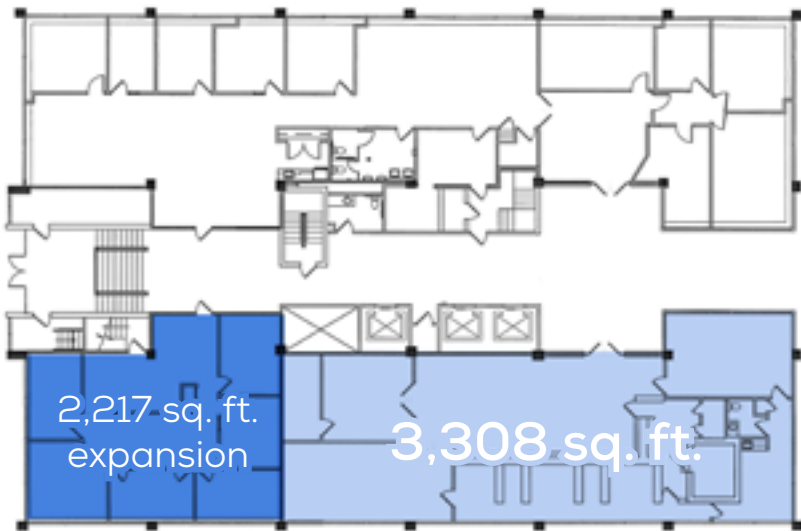
CONTINENTAL — PLAZA —

401 Hackensack Avenue

Ground floor former bank space, located within a **95% leased** trophy office complex.

3,308 sq. ft.
available immediately
with 2,217 sq. ft. expansion

401 HACKENSACK AVENUE LOBBY



18' CEILINGS

EXISTING BANK VAULT

LOBBY PRESENCE





HACKENSACK COMMONS

THE SHOPS AT RIVERSIDE



2.5 MILES ← to Route 17 and the Garden State Parkway 10 MINUTES → to Manhattan via the George Washington Bridge

DONALD SPERLING
Senior Vice President
+1 201 712 5686
donald.sperling@cbre.com

ERIN WENZLER
Senior Associate
+1 201 712 5893
erin.wenzler@cbre.com

continentalplaza.com

CONTINENTAL PLAZA



© 2020 CBRE, Inc. All rights reserved. This information has been obtained from sources believed reliable, but has not been verified for accuracy or completeness. You should conduct a careful, independent investigation of the property and verify all information. Any reliance on this information is solely at your own risk. CBRE and the CBRE logo are service marks of CBRE, Inc. All other marks displayed on this document are the property of their respective owners, and the use of such logos does not imply any affiliation with or endorsement of CBRE.