



**SAURAGE ROTENBERG**  
COMMERCIAL REAL ESTATE

**FOR SALE**

# RECEPTION HALL / RESTAURANT ON MAIN STREET

58010 MAIN ST., PLAQUEMINE, LA 70764

**8,913 SF AVAILABLE**

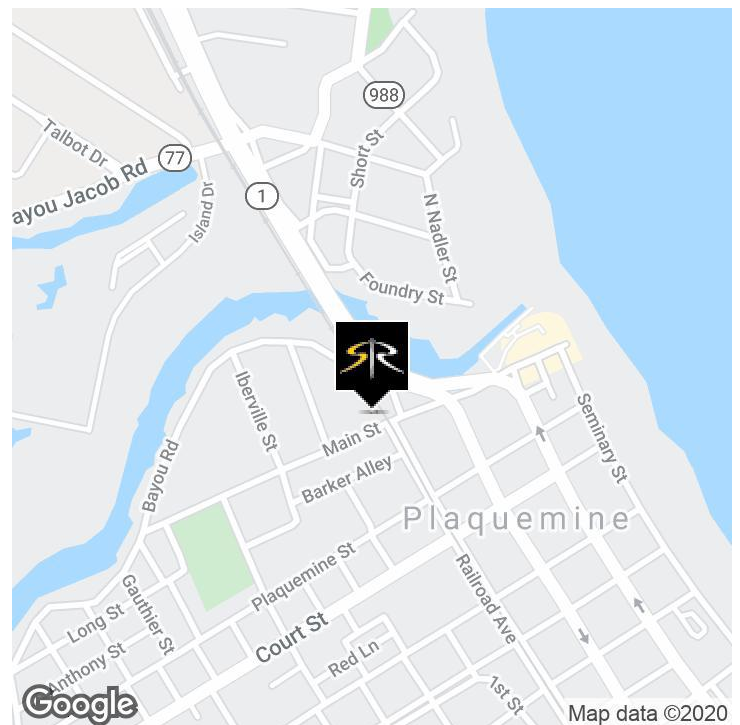


## OFFERING SUMMARY

<b>Sale Price:</b>	<b>\$297,000</b>
<b>Building Size:</b>	<b>8,913 SF</b>

## PROPERTY HIGHLIGHTS

- Reception Hall / Restaurant for Sale on Main Street:
- Great open space for any event
- Holds 290 Total Capacity
- Located in the heart of Downtown Plaquemine
- Minutes from St. John Evangelist church
- Fully equipped commercial grade kitchen & FF&E to open business immediately
- Ideal for an event center, catering, weddings and receptions
- Also an ideal space for a restaurant/catering business with strong demographics and high density employers within short drives



### BRIAN NICOLICH

Commercial Sales & Leasing  
(D)225.229.4371  
brian@sr-cre.com

### JACK HERRINGTON

Commercial Sales & Leasing  
(D)610.563.9046  
jack@sr-cre.com

### SAURAGE ROTENBERG COMMERCIAL REAL ESTATE, LLC

5135 Bluebonnet Boulevard  
Baton Rouge, LA 70809  
225.766.0000 | sauragerotenberg.com



**SAURAGE ROTENBERG™**  
COMMERCIAL REAL ESTATE

FOR SALE

## RECEPTION HALL / RESTAURANT ON MAIN STREET

58010 MAIN ST., PLAQUEMINE, LA 70764

**8,913 SF AVAILABLE**



**BRIAN NICOLICH**  
Commercial Sales & Leasing  
(D)225.229.4371  
brian@sr-cre.com

**JACK HERRINGTON**  
Commercial Sales & Leasing  
(D)610.563.9046  
jack@sr-cre.com

**SAURAGE ROTENBERG COMMERCIAL REAL ESTATE, LLC**  
5135 Bluebonnet Boulevard  
Baton Rouge, LA 70809  
225.766.0000 | sauragerotenberg.com



**SAURAGE ROTENBERG**  
COMMERCIAL REAL ESTATE

**FOR SALE**

# RECEPTION HALL / RESTAURANT ON MAIN STREET

58010 MAIN ST., PLAQUEMINE, LA 70764

**8,913 SF AVAILABLE**



**BRIAN NICOLICH**  
Commercial Sales & Leasing  
(D)225.229.4371  
brian@sr-cre.com

**JACK HERRINGTON**  
Commercial Sales & Leasing  
(D)610.563.9046  
jack@sr-cre.com

**SAURAGE ROTENBERG COMMERCIAL REAL ESTATE, LLC**  
5135 Bluebonnet Boulevard  
Baton Rouge, LA 70809  
225.766.0000 | sauragerotenberg.com

The information contained herein has either been given to us by property owners or is from sources deemed reliable and is believed to be correct, it is not in any way warranted or guaranteed by Saurage Rotenberg Commercial Real Estate. This information is submitted subject to errors, omissions, changes in price, rental or other conditions, withdrawal without notice, and to any special listing conditions imposed by the principals. Licensed in Louisiana & Mississippi.px



**SAURAGE ROTENBERG**  
COMMERCIAL REAL ESTATE

FOR SALE

## RECEPTION HALL / RESTAURANT ON MAIN STREET

58010 MAIN ST., PLAQUEMINE, LA 70764

**8,913 SF AVAILABLE**



**BRIAN NICOLICH**  
Commercial Sales & Leasing  
(D)225.229.4371  
brian@sr-cre.com

**JACK HERRINGTON**  
Commercial Sales & Leasing  
(D)610.563.9046  
jack@sr-cre.com

**SAURAGE ROTENBERG COMMERCIAL REAL ESTATE, LLC**  
5135 Bluebonnet Boulevard  
Baton Rouge, LA 70809  
225.766.0000 | sauragerotenberg.com



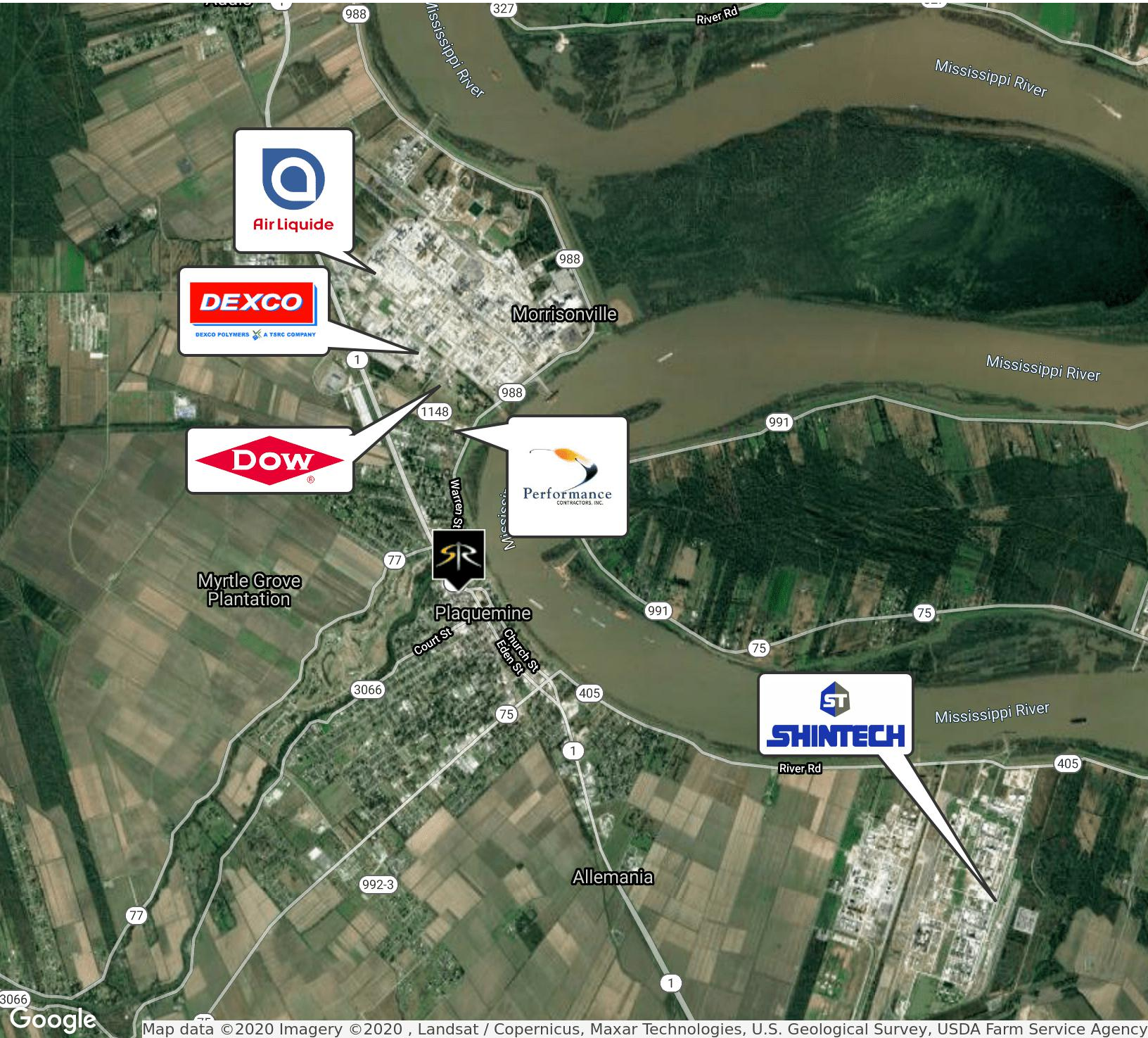
**SAURAGE ROTENBERG**  
COMMERCIAL REAL ESTATE

FOR SALE

# INDUSTRY MAP

58010 MAIN ST., PLAQUEMINE, LA 70764

**8,913 SF AVAILABLE**



**BRIAN NICOLICH**  
Commercial Sales & Leasing  
(D)225.229.4371  
brian@sr-cre.com

**JACK HERRINGTON**  
Commercial Sales & Leasing  
(D)610.563.9046  
jack@sr-cre.com

**SAURAGE ROTENBERG COMMERCIAL REAL ESTATE, LLC**  
5135 Bluebonnet Boulevard  
Baton Rouge, LA 70809  
225.766.0000 | sauragerotenberg.com

The information contained herein has either been given to us by property owners or is from sources deemed reliable and is believed to be correct, it is not in any way warranted or guaranteed by Saurage Rotenberg Commercial Real Estate. This information is submitted subject to errors, omissions, changes in price, rental or other conditions, withdrawal without notice, and to any special listing conditions imposed by the principals. Licensed in Louisiana & Mississippi.px



SAURAGE ROTENBERG  
COMMERCIAL REAL ESTATE

FOR SALE

# CHURCHES & HOTELS MAP

58010 MAIN ST., PLAQUEMINE, LA 70764

8,913 SF AVAILABLE



Map data ©2020 Imagery ©2020 , Maxar Technologies, U.S. Geological Survey, USDA Farm Service Agency

**BRIAN NICOLICH**  
Commercial Sales & Leasing  
(D)225.229.4371  
brian@sr-cre.com

**JACK HERRINGTON**  
Commercial Sales & Leasing  
(D)610.563.9046  
jack@sr-cre.com

**SAURAGE ROTENBERG COMMERCIAL REAL ESTATE, LLC**  
5135 Bluebonnet Boulevard  
Baton Rouge, LA 70809  
225.766.0000 | sauragerotenberg.com

The information contained herein has either been given to us by property owners or is from sources deemed reliable and is believed to be correct, it is not in any way warranted or guaranteed by Saurage Rotenberg Commercial Real Estate. This information is submitted subject to errors, omissions, changes in price, rental or other conditions, withdrawal without notice, and to any special listing conditions imposed by the principals. Licensed in Louisiana & Mississippi.px



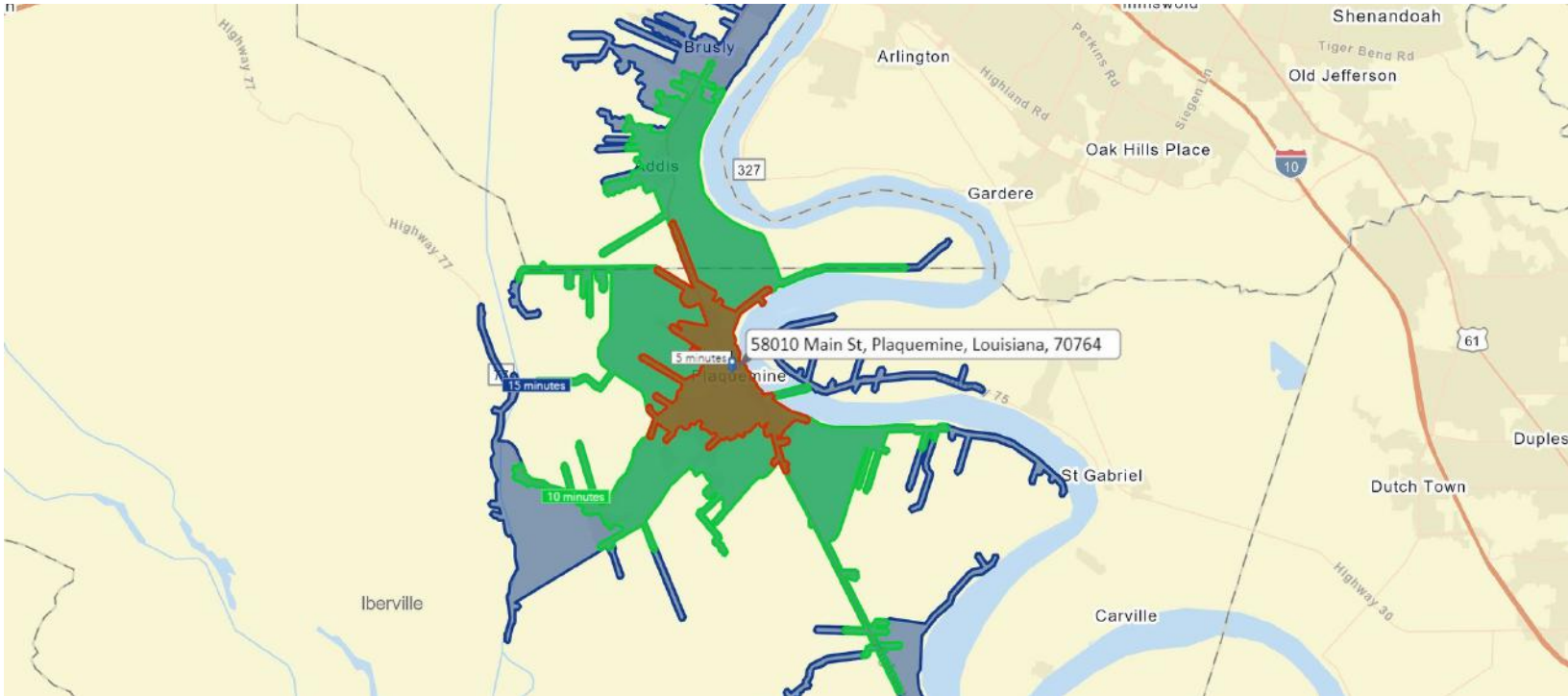
**SAURAGE ROTENBERG**  
COMMERCIAL REAL ESTATE

**FOR SALE**

# DRIVE TIME MAP: 5, 10, 15 MINUTES & DEMOGRAPHICS

58010 MAIN ST., PLAQUEMINE, LA 70764

**8,913 SF AVAILABLE**



<b>POPULATION</b>	<b>5 MILES</b>	<b>10 MILES</b>	<b>15 MILES</b>
Total Population	17,111	85,908	267,604
Average age	34.4	30.0	33.5
Average age (Male)	32.7	29.0	31.5
Average age (Female)	37.1	31.2	35.5
<b>HOUSEHOLDS &amp; INCOME</b>	<b>5 MILES</b>	<b>10 MILES</b>	<b>15 MILES</b>
Total households	6,285	31,336	104,351
# of persons per HH	2.7	2.7	2.6
Average HH income	\$53,911	\$63,107	\$68,072
Average house value	\$138,070	\$239,283	\$252,630

\* Demographic data derived from 2010 US Census

**BRIAN NICOLICH**  
Commercial Sales & Leasing  
(D)225.229.4371  
brian@sr-cre.com

**JACK HERRINGTON**  
Commercial Sales & Leasing  
(D)610.563.9046  
jack@sr-cre.com

**SAURAGE ROTENBERG COMMERCIAL REAL ESTATE, LLC**  
5135 Bluebonnet Boulevard  
Baton Rouge, LA 70809  
225.766.0000 | sauragerotenberg.com

The information contained herein has either been given to us by property owners or is from sources deemed reliable and is believed to be correct, it is not in any way warranted or guaranteed by Saurage Rotenberg Commercial Real Estate. This information is submitted subject to errors, omissions, changes in price, rental or other conditions, withdrawal without notice, and to any special listing conditions imposed by the principals. Licensed in Louisiana & Mississippi.px



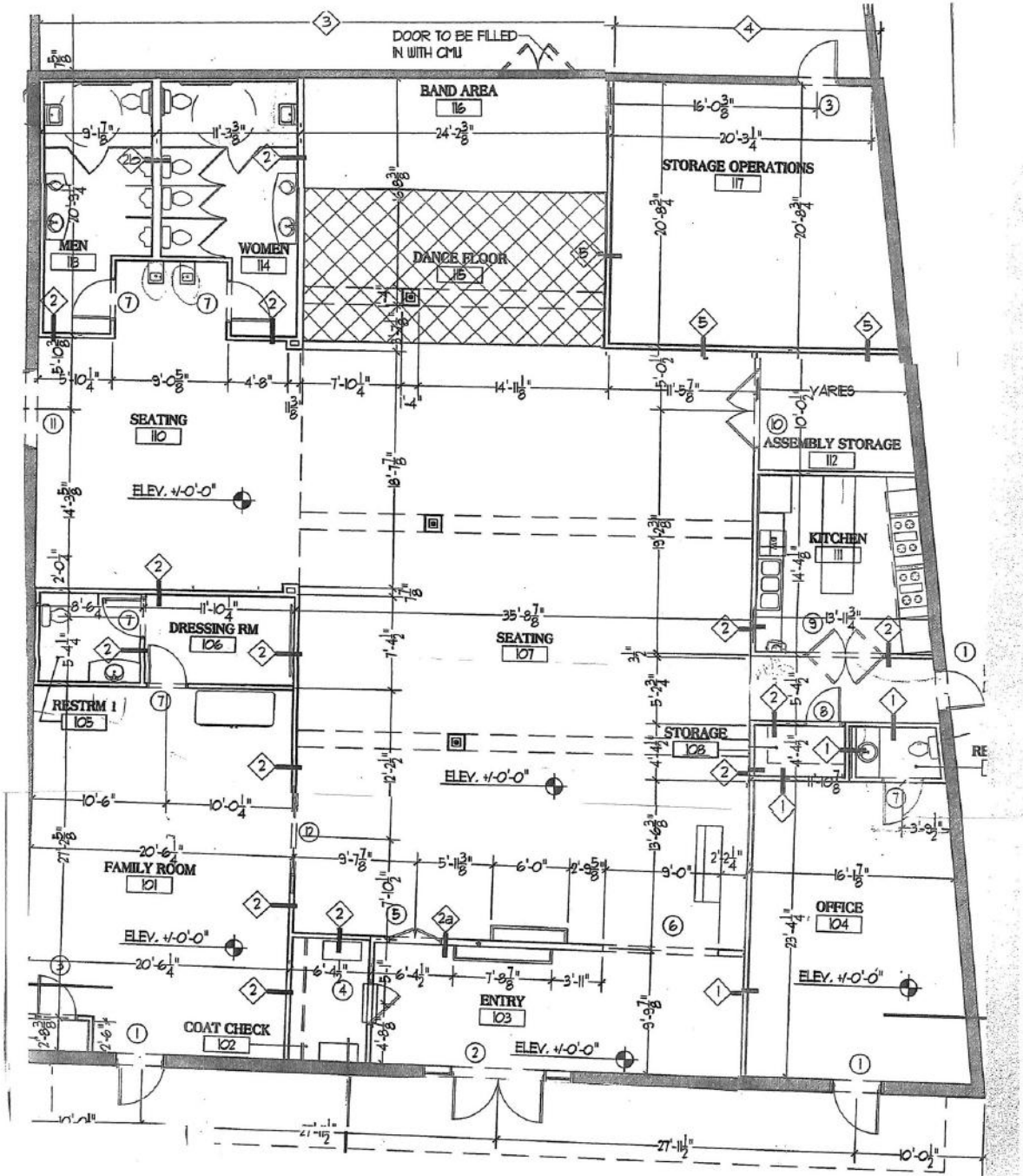
**SAURAGE ROTENBERG**  
COMMERCIAL REAL ESTATE

FOR SALE

**FLOOR PLAN**

58010 MAIN ST., PLAQUEMINE, LA 70764

**8,913 SF AVAILABLE**



**BRIAN NICOLICH**  
Commercial Sales & Leasing  
(D)225.229.4371  
brian@sr-cre.com

**JACK HERRINGTON**  
Commercial Sales & Leasing  
(D)610.563.9046  
jack@sr-cre.com

**SAURAGE ROTENBERG COMMERCIAL REAL ESTATE, LLC**  
5135 Bluebonnet Boulevard  
Baton Rouge, LA 70809  
225.766.0000 | sauragerotenberg.com

The information contained herein has either been given to us by property owners or is from sources deemed reliable and is believed to be correct, it is not in any way warranted or guaranteed by Saurage Rotenberg Commercial Real Estate. This information is submitted subject to errors, omissions, changes in price, rental or other conditions, withdrawal without notice, and to any special listing conditions imposed by the principals. Licensed in Louisiana & Mississippi. px