

CUESTA PARK MEDICAL CENTER

2204 GRANT ROAD | SUITE 102 | 1,093 RSF | MOUNTAIN VIEW, CA

AVAILABLE
FOR
LEASE OR
SALE



BEAUTIFUL TURN-KEY MEDICAL OFFICE SUITE AVAILABLE
FOR LEASE, SALE OR LEASE OPTION

[View Site Specific COVID-19 Prevention Plan](#)

DREW ARVAY

+1 408 436 3647

drew.arvay@cushwake.com

LIC #00511262

AARON FRITZ, CCIM

+1 408 436 3661

aaron.frtiz@cushwake.com

LIC #01216555



2204 GRANT ROAD

SUITE 102 | 1,093 RSF | MOUNTAIN VIEW, CA

- **RECENTLY REMODELED BEAUTIFUL, BRIGHT GROUND FLOOR SUITE WITH AMPLE PARKING IN VERY DESIRABLE LOCATION**
- **FOR LEASE, SALE or LEASE OPTION**
- Easy maintenance with on sight property manager
- Suite 102: 1,093 RSF Medical Office Suite & Storage
- Recently remodeled ground floor suite directly off lobby
- Reception, Staff Area, 3-4 Exam Rooms, Private Office, Small Lab, Private Restroom, Basement Storage
- Common building lobby entrance and separate direct entrance from the parking lot
- Common building restroom on 2nd floor
- Tranquil grounds within walking distance to El Camino Hospital, next to Cuesta Park and the YMCA
- Generous onsite parking with additional shared access to neighboring church parking
- Available for Purchase Immediately
- Occupied until January 31, 2020
- Sale Price: \$897,000
- Lease Rate: \$4.50 psf
- Call for leasing details
- Please do not disturb occupant
- Call to schedule tour



PROPERTY HIGHLIGHTS

2204 GRANT ROAD

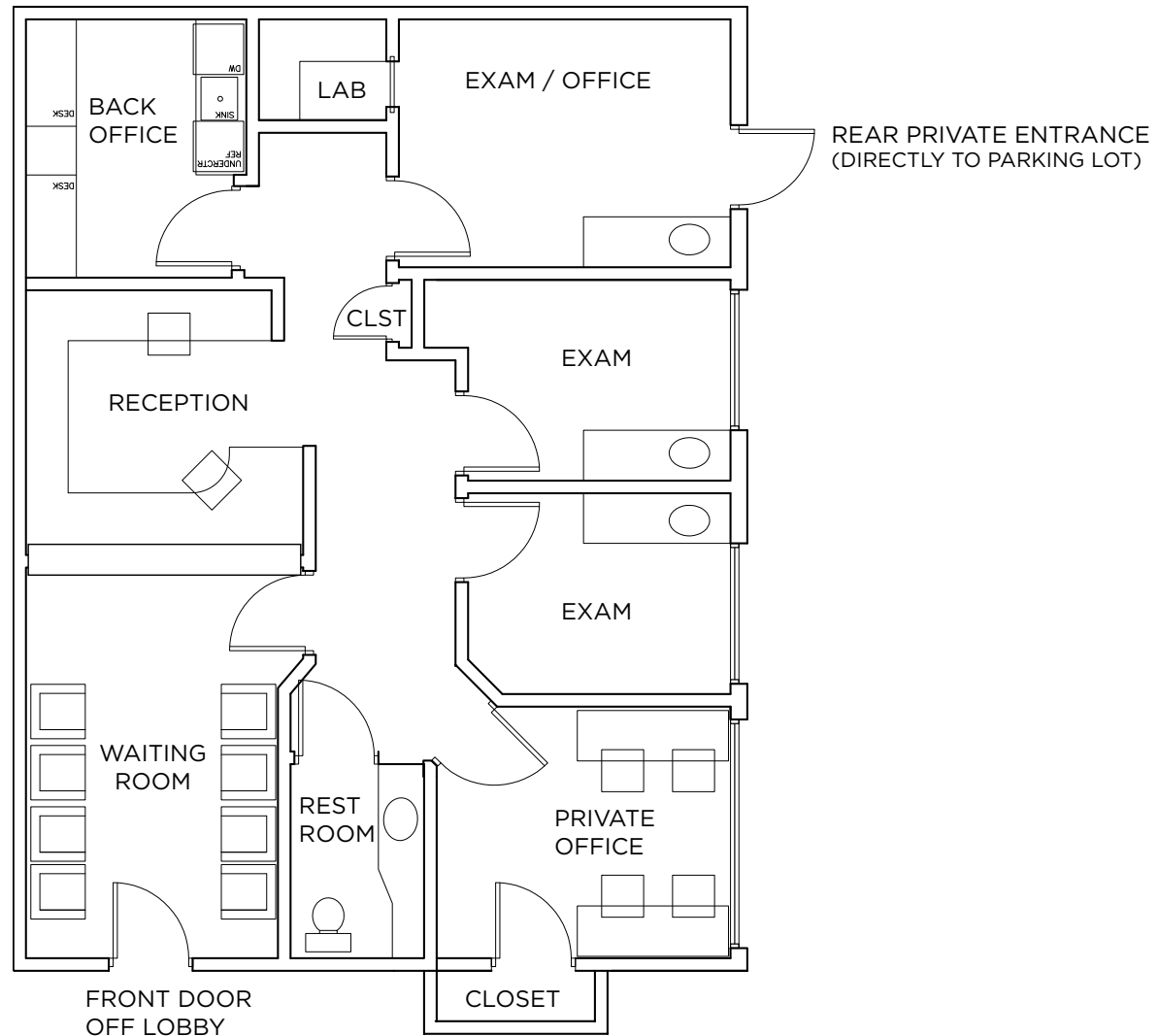
SUITE 102 | 1,093 RSF | MOUNTAIN VIEW, CA



PROPERTY PHOTOS

2204 GRANT ROAD

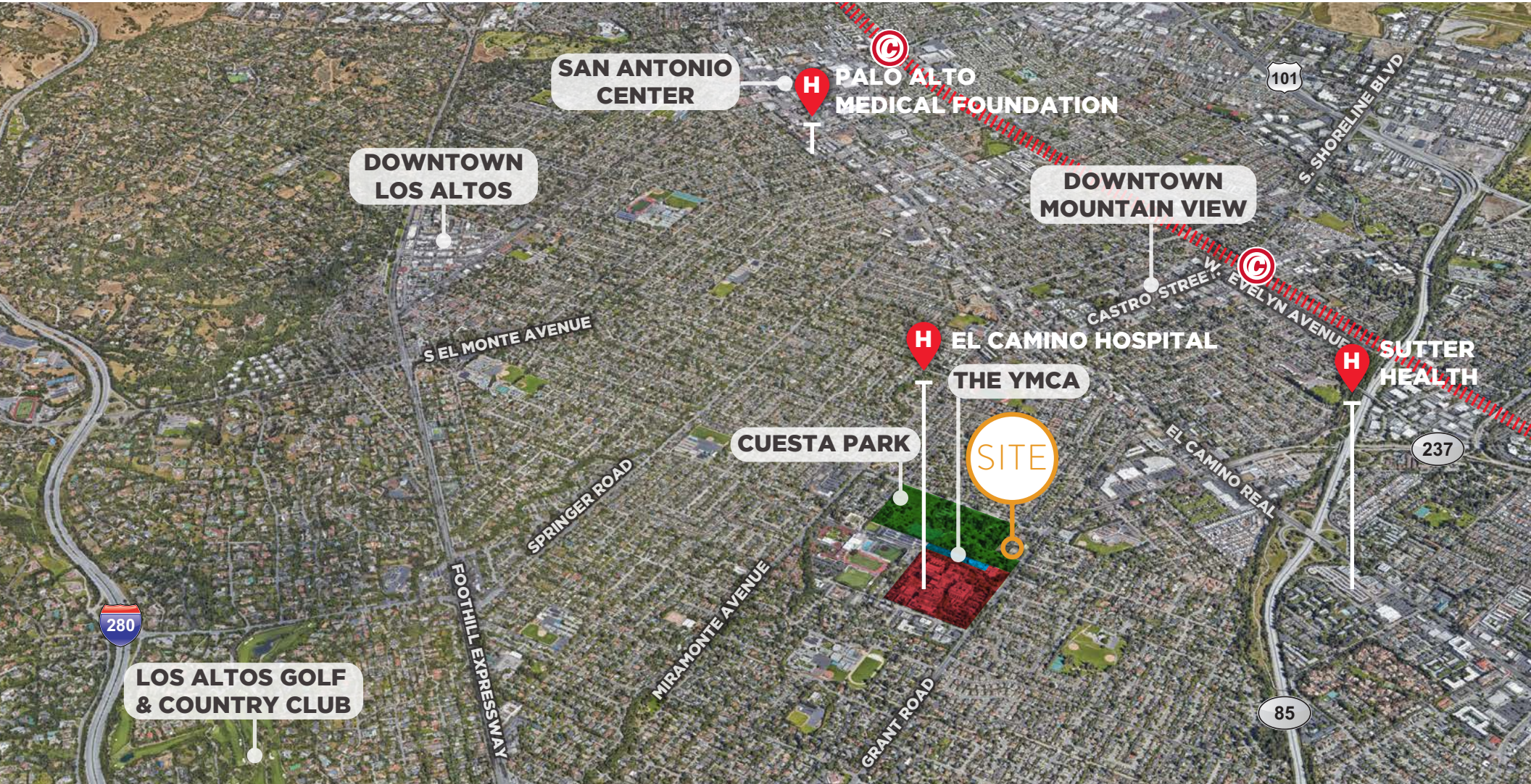
SUITE 102 | 1,093 RSF | MOUNTAIN VIEW, CA



FLOOR PLAN

2204 GRANT ROAD

SUITE 102 | 1,093 RSF | MOUNTAIN VIEW, CA



AMENITIES

DREW ARVAY
+1 408 436 3647
drew.arvay@cushwake.com
LIC #00511262

AARON FRITZ, CCIM
+1 408 436 3661
aaron.frtiz@cushwake.com
LIC #001216555

